



GLEN EIRA
CITY COUNCIL

BENTLEIGH
BENTLEIGH EAST
BRIGHTON EAST
CARNEGIE
CAULFIELD
ELSTERNWICK
GARDENVALE
GLEN HUNTLY
MCKINNON
MURRUMBEENA
ORMOND
ST KILDA EAST

Glen Eira City Council

Advocacy Priorities 2026–2027





ACKNOWLEDGEMENT OF COUNTRY

Glen Eira City Council acknowledges the Boon Wurrung/ Bunurong and Wurundjeri Woi Wurrung peoples of the Kulin Nation as Traditional Owners and Custodians, and pays respect to their Elders past and present. We acknowledge and uphold their continuing relationship to land and waterways. Council extends its respect to all Aboriginal and Torres Strait Islander peoples.

Council honours the rich histories and cultures of First Nations peoples and recognises and values the important contribution of Aboriginal and Torres Strait Islander peoples in enriching our community. We support the Uluru Statement from the Heart and are committed to a *Reconciliation Action Plan* which is underpinned by the principles of self-determination. We work towards improved outcomes and long-term generational change, and to consolidate Glen Eira as a culturally safe place for Aboriginal and Torres Strait Islander peoples. We are committed to achieving equality for Aboriginal and Torres Strait Islander people to live healthy and prosperous lives and to improve life outcomes for current and future generations.

Glen Eira resides on country that always was, and always will be, Aboriginal land.

CONTENTS

ACKNOWLEDGEMENT OF COUNTRY	2
WHY WE ADVOCATE	4
ADVOCACY IN PRACTICE	6
THEME ONE: SAFE, SUPPORTED AND INCLUSIVE COMMUNITIES	7
THEME TWO: FUTURE-READY PLACES BUILT FOR EVERYONE	16
THEME THREE: RESILIENT COMMUNITIES RUNNING ON CLEAN ENERGY	26
THEME FOUR: FAIR AND SUSTAINABLE FUNDING AND SMARTER PARTNERSHIPS	31
PROJECTS BY ELECTORATE	35

The *Glen Eira City Council Advocacy Priorities 2026–2027* was adopted by Glen Eira City Council at its ordinary Council meeting on 30 June 2026.

Cover image

Supporting the implementation of our *Urban Forest Strategy*. Glen Eira Parks staff with seedlings to be planted during our *Annual Community Planting Week* at Packer Park, Carnegie.

WHY WE ADVOCATE

Glen Eira is a council that delivers

As the closest level of government to the community, we work closely with our residents to understand what matters most to them — and we act. But we can't do it alone.

These advocacy priorities are our call for strong collaboration and partnership with the Victorian and Australian Governments. They focus on shared priorities, including cost of living pressures, safe and accessible communities, housing growth, climate resilience and long-term financial sustainability. By partnering with us and helping to fund what our community needs and driving critical policy reform to remove barriers, we can work together to deliver what matters most to us all.

Quality of life and connection to place are central to everything we do. The most important way Council supports this is through the essential services and facilities we provide.

Through *Our Priorities, Our Future* engagement, our community told us what they value most are:

These results highlight the importance of sustained investment in the core services and infrastructure that directly support liveability and wellbeing.

Glen Eira's population is expected to grow by 30,000 people — reaching 188,000 by 2036.

Recent community engagement shows that, to manage this growth, our community wants Council to focus on:

- creating quality open space
- maintaining community assets
- investing in stronger activity centres — vibrant local hubs that support jobs, housing and services
- supporting health, safety and wellbeing through access to essential services.



Growth brings opportunity, but it also brings pressure

We are ready to play our role in accommodating more residents, supporting diverse housing and creating neighbourhoods where people feel connected, safe and supported. But Glen Eira is already a highly urbanised municipality with very limited open space and increasing pressure on community assets. As our population grows, demand for parks, facilities and essential services will intensify, while ageing infrastructure becomes more costly to maintain.

If funding doesn't occur, growth will outpace liveability. Parks become more crowded, community assets age faster and access to services becomes less equitable. Over time, this drives higher costs and poorer outcomes for the people who rely on public infrastructure the most.

To deliver housing security and well-planned growth, local government needs genuine collaboration, sustained investment and a seat at the table. Through strong partnerships, we can deliver better outcomes together and ensure Glen Eira remains a great place to live, work and visit for generations to come.

Bringing our Council Plan to life

Our priorities will progress the strategic objectives outlined in our *Council Plan 2025–2029*, ensuring we continue to meet our community's needs now and into the future. This means you know that your support directly leads to long-term community outcomes.

Our strategic directions are:


1
STRATEGIC DIRECTION
Community safety, cohesion, health and wellbeing



2
STRATEGIC DIRECTION
Diverse, welcoming and accessible places



3
STRATEGIC DIRECTION
Environmental stewardship



4
STRATEGIC DIRECTION
Innovative and financially sustainable



ADVOCACY IN PRACTICE

How we advocate

Advocacy is a core part of how we deliver real change for our community.

As the level of government closest to the people we serve, we listen carefully to residents, traders and community organisations. We draw on local evidence, community insight and lived experience to shape practical, place-based advocacy that responds to real needs and benefits the whole community.

Our approach is grounded in partnership. We work collaboratively to deliver real outcomes for real communities, now and into the future.

There is no one-size-fits-all approach to advocacy. It is responsive, flexible and shaped by what is happening on the ground. We are continuously listening and engaging with our community, adjusting our focus as new challenges and opportunities emerge.

Glen Eira is one of Melbourne's most diverse municipalities. It is home to a strong and active Jewish community, alongside people from many cultural backgrounds, faiths and life experiences. As one of Victoria's most densely populated areas, Glen Eira faces increasing pressure on transport, infrastructure, public space and the environment. Our advocacy reflects the complexity of this place, ensuring growth and change support safety, inclusion, resilience and connection.

Like all local governments, our ability to create lasting change is strengthened through collaboration. Meaningful progress depends on shared effort and investment across all levels of government. That's why our advocacy is aligned with broader state and federal priorities. By grounding our work in shared goals, we build stronger partnerships, amplify our impact and ensure local knowledge helps shape decisions that matter most to our community.

Real change made possible by you

Our recent advocacy successes show what's possible when we work together. We've secured funding for key projects that make a real difference, including:

- \$3 million for the new pavilion at Mackie Road Reserve in Bentleigh East
- \$400,000 for new female-friendly facilities at Glen Huntly Pavilion in Glen Huntly
- \$250,000 for a new park at the former traffic school site in Bentleigh East
- \$4.5 million for taking Glen Eira Sports and Aquatic Centre (GESAC) off gas
- \$160,000 for a creative lighting installation in Elsternwick
- \$55,000 for extended opening hours at Elsternwick Library and Bentleigh Library and Youth Hub
- \$2.3 million for active travel projects, supporting safe and convenient cycling connections.

These investments deliver important upgrades to community infrastructure that help improve safety, accessibility and sustainability — while supporting greater participation, wellbeing and community connection.

At a time when communities are facing growing cost-of-living pressures, climate impacts and rising demand for local services, these partnerships demonstrate the value of targeted, early investment. By aligning local priorities with state and federal objectives, and sharing responsibility for funding and delivery, governments can achieve outcomes that are more sustainable, equitable and effective than any single level of government could deliver alone. This collaborative approach helps protect essential services, support vulnerable residents and ensure infrastructure investment keeps pace with community needs.



Kitchen 'n' Bar

JOHN
WINE

X-RAY
BULK BILLING
CENTRE
9087 4388

VISION
Radiology

THEME ONE

**SAFE, SUPPORTED
AND INCLUSIVE
COMMUNITIES**

P A T I S S E R I E

LUCKY
CHINESE OCCASIONAL CAFE

EVEREA
LIBRARY AND
COMMUNITY
CENTRE



PRIORITY PROJECTS

Revitalise Koornang Road

\$2.25 million to co-fund the streetscape renewal of this vibrant activity centre

Timing: This is a multi-year project starting in 2026–27, with staged delivery based on available funding and masterplan completion

Koornang Road is one of Glen Eira’s busiest activity centres and a key destination for shopping, dining and transport. We urgently need to deliver the next stage of the Carnegie Masterplan — a \$4 to 5 million plan to revitalise the Koornang Road streetscape — to ensure this vibrant activity centre continues to keep pace with community and visitor demand and boost community and economic activity. Funding will support essential upgrades, which include:

- more street trees and greenery for amenity and shade
- new public seating, bins and bike hoops to support active travel and community gathering
- upgraded footpaths and pedestrian areas for safety and accessibility.

Carnegie’s vibrant shopping precinct is home to local traders, the Carnegie Library and Community Centre, and train station. These vital upgrades will make the area more welcoming, safer, accessible and enjoyable — encouraging community connection and supporting local businesses to thrive. This project provides a rare opportunity to shape the long-term identity and economic vitality of the precinct.



Koornang Road, Carnegie.



Carnegie Library and Community Centre, Carnegie.

PRIORITY PROJECTS

Upgrading Carnegie Library and Community Centre

\$200,000 for detailed design and \$2 million for construction

Timing: Concept design complete

The Carnegie Library is already a key community anchor in one of Glen Eira's busiest activity centres. Modernising the building presents a significant opportunity to re-imagine how the space supports literacy, creativity, social connection and lifelong learning.

A reconfigured and modernised library that supports contemporary library services, flexible learning spaces, inclusive community use and improved accessibility will transform the existing building to better meet the needs of a growing and diverse community.

The ageing building limits how the space can be used today. The upgrade would modernise internal layouts by removing outdated walls and improving flexibility, creating better spaces for study groups, remote working and community learning. Improvements to lighting, windows and access to natural light would make the building more comfortable, safe and welcoming, while new and upgraded facilities would support contemporary library services, accessibility and inclusive community use.

Build a community hub in Elsternwick

\$2 million to support concept design and early planning for the hub

Timing: We're shaping the concept with partners and the community. With funding secured, concept design could begin in 2026–27.

A new, integrated community hub including a new, contemporary Library and small open space for families, children and residents of all ages in the heart of Elsternwick. The proposed hub will make it easier for families to access trusted programs and professionals in one location by bringing together the Elsternwick Family and Children's Centre with accessible support services in one location to provide:

- early childhood and family support spaces
- wellbeing programs that build connection, resilience and healthy development
- integrated services to help families navigate parenting, health and community life.

This funding will support the concept design and planning phase, including community engagement and early documentation.

PRIORITY PROJECTS

Improve Centre Road in Bentleigh

\$500,000 for streetscape upgrades

Timing: Concept design completed. Staged delivery based on available funding is underway

Centre Road is a thriving local hub for shopping, dining and community life. We're seeking funding for the next stage of the Bentleigh Streetscape redevelopment — a \$1.7 million project to refresh Centre Road, support local businesses and ensure a thriving shopping destination.

Works include upgraded garden beds, renewed seating, improved footpaths and new street trees to make the area more accessible, comfortable and inviting. These vital upgrades will encourage people to stay longer, feel safer, connect and enjoy the space.



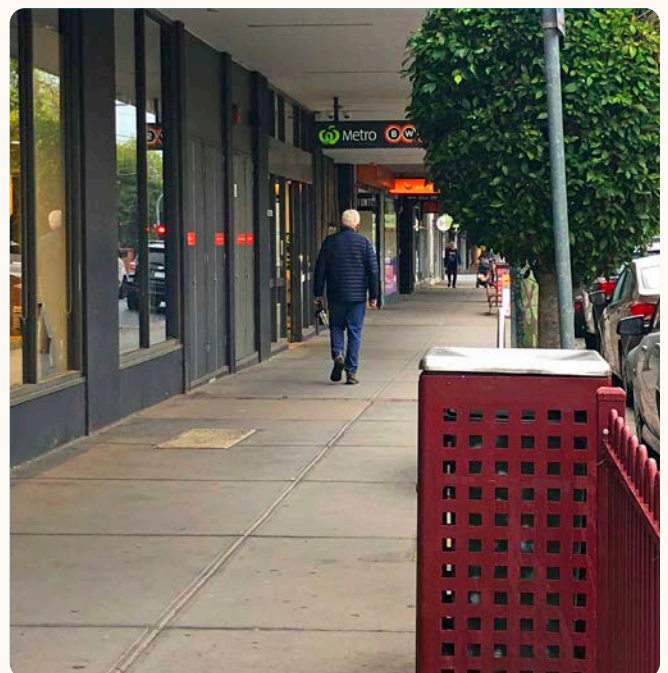
Centre Road, Bentleigh.

Alma Village streetscape upgrade (Caulfield North)

\$55,000 for streetscape upgrades including new street furniture

Timing: With funding secured, we could complete these works in 2026–2027.

A refresh of the public realm at Alma Village, a small local activity centre at the intersection of Orrong Road and Alma Road. The project will replace ageing street furniture with modern, high-quality stainless steel and timber assets to improve the look and feel of the centre, support local businesses and strengthen its local identity. Works include new bins, seating and bike hoops, and allow for demolition, traffic management and contingency.



Alma Village.

PRIORITY PROJECTS

Kooyong Road streetscape upgrades (Caulfield North)

\$55,000 for the installation of new street furniture and canopy trees.

Timing: With funding secured, we could complete these works in 2026–2027.

Improvements to the Kooyong Road local activity centre, between Sebastopol Street and Inkerman Road, to refresh the public realm and increase urban greenery. The project includes new and replacement street furniture and the planting of canopy trees within the footpath to create a more comfortable, attractive and welcoming centre for local businesses, residents and visitors. Works allow for demolition, traffic management and contingency.



Kooyong Road, Caulfield North

SUPPORTING PROJECT ASKS

A collective model to strengthen local responses to homelessness

\$200,000 to respond to homelessness

Establish a coordinated, place-based response to homelessness in Glen Eira. Aligned with the *Zero Project: Housing First Coordination*, this initiative will bring together service providers, community organisations and people with lived experience to co-design practical, person-centred solutions. The focus will be on proactive outreach, case management and pathways to housing, health and employment. A shared governance model will help reduce duplication, close service gaps and support long-term transitions out of rough sleeping or insecure accommodation.



Supporting coordinated care to address homelessness locally.

KEY POLICY ASKS

Prevent family violence

Community benefit: More people can access support early, close to home, reducing harm, improving safety and lowering long-term demand on crisis, health and justice systems.

Our ask: Provide tailored, long-term funding for local family violence support services and primary prevention initiatives, including housing, counselling, legal and financial support and employment pathways.

Support fathers and strengthen respectful relationships

Community benefit: Stronger families and safer homes through prevention and positive role modelling, supporting healthy relationships, child wellbeing and long-term community safety.

Our ask: Fund and partner on parenting programs for fathers and male carers, including locally co designed dads' and grandparent groups and culturally inclusive workshops (including for separated or single fathers).

Support community safety (place-based)

Community benefit: Safer streets and public places increase confidence, particularly for women, young people and older residents, and strengthen neighbourhood connection.

Our ask: Partner with councils to deliver evidence based community safety programs, including gender sensitive design measures such as improved lighting, wayfinding, safer routes and local engagement initiatives.

Improve local health and wellbeing

Community benefit: Better access to prevention and early support improves mental health, reduces isolation and helps people thrive across all stages of life.

Our ask: Expand funding and support for local health and wellbeing initiatives, including mental health, Maternal and Child Health (MCH) and healthy ageing programs for older people, with a focus on accessibility, prevention, connection and reducing isolation.

Restore at least 50:50 funding for core MCH services, and support early intervention, outreach and navigation for culturally and linguistically diverse and older communities.

Increase vaccination uptake and prevent decline in immunisation rates

Community benefit: Higher vaccination rates protect individuals and the broader community, reducing the spread of preventable diseases, avoiding hospitalisation, and easing pressure on the health system.

Our ask: Increased funding to councils to deliver immunisation services (reflecting real costs). State/national public health campaigns to lift vaccination rates and support for evidence-based outreach and behaviour change programs.

Provide cost of living relief

Community benefit: Practical relief for households facing pressure supports wellbeing and stability by delivering help locally and early.

Our ask: Provide cost of living relief through expanded food security initiatives, including community meals and food access programs, alongside energy upgrades, targeted relief for older residents and households facing housing stress, and targeted subsidies for essential services.

KEY POLICY ASKS

Prevent antisemitism, address hate and strengthen social cohesion

Community benefit: Well-funded, locally delivered initiatives help prevent the escalation of antisemitism and other forms of hate. They build trust, improve safety and support a more inclusive Glen Eira where people feel welcome, respected and connected. Strong social cohesion helps create safer, more resilient communities.

Our ask: Partner with councils on coordinated, place-based approaches to preventing and responding to antisemitism and hate, including funding for education, early intervention, prevention and local safety initiatives. Support Glen Eira's inclusion in the Victorian Anti-Hate Taskforce and back the Local Empowerment Against Hate initiative, a community-led approach to preventing and responding to hate and discrimination.

Support local economic activation

Community benefit: More visitors and foot traffic support local traders, boost the local economy and create vibrant activity centres where people want to spend time.

Our ask: Support local economic activation initiatives such as precinct revitalisation, and arts and music programming.

Scale up school based prevention programs

Community benefit: Early intervention reduces harm from vaping, gambling and mental health challenges while supporting respectful behaviour and inclusion in community life.

Our ask: Fund and expand school based prevention programs delivered with local partners, co designed with young people, and integrated with initiatives addressing gender based violence and the prevention of violence against women.

Reduce gambling harm

Community benefit: Lower financial and social harm reduces stress on individuals and families and limits flow on impacts to health and social services.

Our ask: Progress harm reduction reforms, strengthen online regulation and advertising restrictions, improve treatment and referral pathways, and support local prevention campaigns such as *Love Our Game*.

Invest in social and affordable housing

Community benefit: More stable housing options close to services and transport reduce homelessness risk and support a safer, more connected community.

Our ask: Prioritise social and affordable housing initiatives in areas with low stock and increase ongoing funding to support delivery and a strategic approach to affordable housing.

Foster inclusion and belonging

Community benefit: Reduced discrimination and stronger community connection help people feel safe, valued and able to fully participate in community life.

Our ask: Support inclusive social cohesion initiatives such as Upstander training and Welcoming Cities initiatives.

POLICY OUTCOMES FOR A HEALTHY COMMUNITY

Safety builds connection

People feel safer in well-lit, active public spaces — leading to more time outdoors, more events, and stronger communities. In Glen Eira, 94 per cent of residents feel safe during the day, but this drops to 64 per cent after dark.

Hate harms everyone

Antisemitism, racism and other hate incidents are rising, threatening the strength of our multicultural communities. Local action helps stop hate before it escalates. Glen Eira is home to one of Melbourne's largest Jewish communities.

Upstanders make a difference

Training people to speak up builds a more inclusive Glen Eira. Locally, Council works with police, faith groups and community leaders through a Social Cohesion Taskforce to prevent harm early.

Health starts early

Vaping, gambling and youth mental health need early action. Local schools are already engaged in anti-vaping programs, recognising prevention reduces long-term harm and cost.

Gambling harm is costly

It costs Victoria billions, with more than 600,000 underaged teens already betting more than \$18 million a year in Australia. Councils are leading efforts to cut pokies and raise awareness.

Housing and cost-of-living pressures are growing

More people are struggling. Councils need support to meet demand and tackle homelessness, and residents facing housing insecurity.

Long-term investment matters

Stable funding means better services, stronger partnerships, and fewer people falling through the cracks. Councils are closest to the community need, but aren't funded to meet growing social demand at scale.

WHY IT MATTERS

Everyone deserves to feel safe, supported and connected — whether walking home at night, raising a family, or as an older resident. But rising costs, social division and growing mental health pressures are increasing demand for early and locally delivered support.

Access to support early — and close to home — plays an important role in community health and wellbeing. As Glen Eira's population grows, locally delivered services that support connection, prevention and early intervention help reduce pressure on the health system and ensure people can access help when and where they need it.

Glen Eira is stepping up with place-based solutions — and we're asking government to back us — because early, community level action prevents harm, strengthens resilience and reduces long-term demand on crisis services.

We're committed to safer communities for all. That means stronger responses to crime, hate speech and antisemitism, and creating spaces where people feel protected, respected and welcome. We know safety, wellbeing and inclusion are closely linked — and that preventive investment at the local level delivers better outcomes for communities and governments alike.

YOUR IMPACT BY PARTNERING WITH US

By partnering with us, government investment will strengthen safety, wellbeing and inclusion at the local level — delivering early support where it has the greatest impact.

- Safer, more inclusive public spaces reduce crime and increase confidence, especially for women, young people and older residents — supporting resilient, active neighbourhoods.
- Early intervention through youth hubs, family services and wellbeing programs reduces long-term pressure on health, justice and social services, while helping children, young people and families thrive.
- Anti hate initiatives, antisemitism prevention and inclusive placemaking strengthen social cohesion and community resilience during a time of rising division.
- Place-based, coordinated responses to homelessness and cost of living pressures help people access support earlier, prevent escalation and reduce long-term harm.

THEME TWO

**FUTURE-READY
PLACES BUILT
FOR EVERYONE**



Elsternwick Club site, Elsternwick.

WHY IT MATTERS

Our neighbourhoods are growing — and without the right infrastructure, liveability is at risk. As density increases, access to open space, community facilities and safe transport becomes essential to everyday wellbeing, social connection and economic resilience.

Open space is our number one priority. Glen Eira has the lowest amount of public open space per person in Greater Melbourne — and as our population grows, this gap will only widen without targeted investment.

Glen Eira is planning ahead. We are progressing housing projects and revitalising activity centres to support a growing population and strengthen local economies. But growth only works if infrastructure keeps pace — especially in higher-density areas where demand is greatest.

We're ready to partner with government to deliver thriving, inclusive neighbourhoods. To do that, we need the funding and policy settings that unlock timely investment in open space, community facilities and transport connections.

This matters because our activity centres are the backbone of local life. They are where people gather, work, shop and connect. With Glen Eira's population set to grow by 30,000 people — reaching 188,000 by 2036 — the pressure on these places will only increase.

That's why we're investing in better streetscapes, accessible open space, community infrastructure and safe walking and cycling links — to keep people connected, support local businesses, and ensure our neighbourhoods remain liveable now and into the future.

Your impact by partnering with us

- Investing in new and upgraded open space in high growth areas improves liveability, supports population growth and boosts community wellbeing — particularly for residents in higher density neighbourhoods, while also contributing to urban cooling and climate resilience.
- Investing in accessible and inclusive sport, recreation and community facilities removes barriers to participation, helps address the gender gap in sport, and builds long-term community connection and resilience.
- Renewing and upgrading ageing community infrastructure ensures facilities remain safe, fit-for-purpose and able to support a growing, changing and ageing population.
- Improving access to services and places for older residents supports ageing in place, reduces isolation and strengthens community wellbeing.
- Upgrading activity centres helps support local jobs, strengthens local identity and creates welcoming places for people to meet, move and spend time locally.
- Improving resilient transport accessibility — including crossings, lighting and walking and cycling links — strengthens everyday access to key destinations and supports safe, reliable movement for all, and reduces reliance of private vehicles.
- Aligning activity centre planning with smart planning and community needs creates places that are built for people and remain vibrant and resilient over time.

PRIORITY PROJECTS

Deliver new open space in Elsternwick

\$15.5 million to deliver an integrated community asset and open space or \$6 million to deliver the open space component only

Timing: Concept design completed. With funding secured, construction can begin in 2027–28

Open space is Glen Eira’s number one priority — and Elsternwick is where the need is most acute. The activity centre has just one public green space, despite being one of our most densely developed areas.

Council has already invested \$15 million to secure the former Elsternwick Club site — a rare opportunity to create new community hub and open space in a fully developed suburb.

Importantly, this investment will also support new housing and population growth by ensuring essential community infrastructure keeps pace — making higher-density living more liveable, attractive and sustainable.

- With \$15.5 million in funding, we can deliver a vibrant, inclusive public open space that preserves a local heritage building for community use while creating places to gather, rest, play and connect.
- With \$6 million, we can deliver the core open space works — transforming the site into a green, accessible and welcoming place for daily community use.

This investment will create the long-term “green heart” of Elsternwick, improving mental and physical wellbeing, cooling the urban environment, and providing a shared place for a growing and diverse community — benefits that will endure for generations.



Artist's impression — Elsternwick Club precinct view.



Artist's impression — Elsternwick Club open space looking south towards central plaza and play area.

PRIORITY PROJECTS

Transform Mackie Road Reserve

\$5.85 million to complete final design and construction or \$1.6 million to deliver the inclusive playspace upgrade

Timing: Masterplan refresh completed. Construction can begin in 2026–27 with funding

Mackie Road Reserve is a key open space for the rapidly growing Bentleigh East community, supporting sport, recreation and informal use for all ages.

The Victorian Government has already committed \$3 million for a new pavilion. This project seeks funding to complete the full master planned vision for the reserve, ensuring the surrounding open space matches the quality and accessibility of the new facilities.

With \$5.85 million, we can deliver a fully accessible, intergenerational open space with:

- an inclusive playspace
- improved shade and tree canopy
- seating and gathering areas
- spaces for both structured sport and casual recreation.

With \$1.6 million, we can deliver a high-quality, inclusive playspace with enhanced landscaping and seating, providing immediate benefit to local families. The Mackie Road Inclusive Playspace will create a high-quality, accessible play space designed for children of all abilities, including those with disability or sensory needs. It will provide inclusive equipment, accessible paths and welcoming spaces for families and carers to gather, connect and play. The project responds to strong local demand and will support health, wellbeing and social inclusion, while providing a key community asset for a growing and diverse population.

This investment will strengthen Mackie Road Reserve as a safe, welcoming community hub — supporting children, families, older residents and growing participation in outdoor activity.



Artist's impression — Mackie Road Reserve playspace, Bentleigh East.

PRIORITY PROJECTS

Turn Ames Avenue/Rosstown open space into a flourishing park

\$1.5 million to deliver a new neighbourhood park

Timing: Ready to deliver — detailed design complete

Carnegie's population is expected to grow by 22 per cent by 2031, with most new residents living in high-density housing with limited private open space. Council's *Open Space Strategy* confirms an urgent need for more local parks in this precinct.

Following the closure of Rosstown Community, local residents told us they wanted the land transformed into open space. Council responded by purchasing and clearing two adjoining properties, creating a future park of more than 4,000 square metres.

Council has already invested \$2.4 million in land acquisition, demolition and design. With \$1.5 million in funding, we can deliver a welcoming neighbourhood park featuring:

- gardens and climate-responsive landscaping
- nature play opportunities
- inclusive, accessible paths
- interpretive elements developed with Traditional Owners

This new park will give families, children and older residents a safe, nearby place to relax, play and connect — supporting wellbeing and liveability as Carnegie continues to grow.



Artist's impressions: Ames Avenue (Rosstown) open space — neighbourhood park, Carnegie.

SUPPORTING PROJECTS ASKS

Upgrade the western entrance of Caulfield Park

\$1 million to deliver safety and accessibility upgrades

Timing: Ready to deliver — detailed design complete

Caulfield Park is one of Glen Eira’s most accessed parks, but the western entrance at Hawthorn and Balaclava Roads is difficult to navigate and presents safety concerns for pedestrians. Funding will deliver immediate safety improvements, including:

- safer crossing points
- improved sightlines
- clearer, more legible pedestrian entry paths

This investment responds directly to community feedback and will improve access for people of all ages and abilities, particularly those with mobility challenges — making one of Glen Eira’s most important open spaces safer and more welcoming.

Transform the Porter Road Park in Bentleigh

\$1 million to deliver new open space and passive recreation facilities

Timing: Detailed design is complete. Construction can begin once funding is secured

This project will create nearly 2,000 square metres of new open space in an area with limited access to parks, directly addressing a critical local need. The park will include:

- play areas and picnic shelters
- native trees and landscaping to improve shade, cooling and flood mitigation

Council has already invested \$5.8 million in land acquisition and design. This investment will transform underutilised land into a safe, inclusive park that supports health, social connection and climate resilience.

Murrumbeena Park netball and multipurpose facilities

\$500,000 to deliver new courts and supporting facilities

Timing: Concept design nearing completion. Delivery can commence soon after funding is secured

Glen Eira has high demand for modern, accessible sports facilities, particularly for women and girls. This funding will deliver new netball and multipurpose court supported by upgraded community facilities, creating:

- safer places to train and compete
- more opportunities for women, girls and young people
- flexible spaces for both organised sport and casual recreation

Bute Street, which is next to Murrumbeena Community Hub, presents a rare opportunity to expand access to community sport in the built-out area, responding directly to growth in female participation and local demand.

Caulfield South Activity Centre upgrades

\$300,000 for streetscape upgrades

Timing: With funding secured, works can start in 2026–2027 and be completed in 2027–2028

Glen Huntly Road is a key local shopping strip and community destination in Caulfield South. However, parts of the streetscape are ageing and need improvement to

SUPPORTING PROJECTS ASKS

better meet the needs of people using the centre each day. This project will revitalise the Glen Huntly Road streetscape to make it safer, more welcoming and easier to move through. Upgraded amenities and improved accessibility will encourage people to spend more time locally, support small businesses and strengthen community connection. Investing in the street will help ensure Glen Huntly Road continues to function as a vibrant, active and inclusive local hub for Caulfield South.

Elsternwick Green Link

\$150,000 to complete needed upgrades

Timing: Stage 1 completed. Further funding needed for staged implementation

Elsternwick is growing and residents are seeking safer, greener and more comfortable ways to move through the activity centre. Funding will support community-led upgrades to Rippon Grove, near Elsternwick Station and the Rosstown Rail Trail, including safer crossings, native landscaping, and improved active transport paths. The Green Link will improve wellbeing, support local businesses, and strengthen climate resilience while making every day walking and cycling safer and more appealing.



Elsternwick Green Link scheme, Rippon Grove, Elsternwick.

Upgrade facilities at E.M.C. Fox Pavilion at McKinnon Reserve

\$3 million for construction

Timing: Design and delivery can begin within 12 months of funding being confirmed

The McKinnon Reserve Pavilion is a key community sports facility, supporting football, netball and cricket — but it requires significant upgrades to remain accessible, inclusive and fit for purpose. Funding will deliver:

- DDA-compliant toilets and change facilities
- improved flooring and a modern kitchen
- a renewed grandstand and windows
- a transition from gas to all-electric systems, powered by 100 per cent renewable electricity

The upgraded E.M.C. Fox Pavilion will strengthen McKinnon Reserve as a shared, future-ready community hub — supporting growing participation and enabling more people to take part in local sport.



E.M.C Fox Pavilion, McKinnon Reserve, McKinnon.

SUPPORTING PROJECTS ASKS

Upgrade H.R. Stephens Pavilion at Bailey Reserve

\$500,000 to deliver targeted pavilion upgrades

Timing: Concept design required. Delivery possible in 2026–27 with funding

East Bentleigh Soccer Club is one of Glen Eira's fastest-growing clubs, with strong female and junior participation — but the existing pavilion limits inclusion and participation. Funding will address critical gaps, including:

- female-friendly change rooms with improved privacy and safety
- direct toilet access linked to change facilities
- additional storage for equipment
- upgrades to wet areas and social spaces

These upgrades will remove barriers to participation, support women and girls in sport, and ensure the pavilion can meet the needs of a growing community.



H.R. Stephens Pavilion, Bailey Reserve, Bentleigh East.

KEY POLICY ASKS

Strengthen safety, maintenance and accessibility on state controlled roads

Community benefit: Improves everyday safety, reliability and accessibility for people walking, cycling, driving and using public transport — particularly across neighbourhoods, school zones and activity centres.

Our ask: Strengthen collaboration with the Department of Transport and Planning and VicRoads through a shared, structured approach to identifying and progressing priority safety, maintenance and access issues on state controlled roads in Glen Eira. This includes advocating for consistent, long-term investment in road condition upgrades, safer crossings, and improved bus accessibility, reliability and stop infrastructure to support equitable and connected travel for all.

Expand active transport connections on both local and state controlled roads

Community benefit: Supports safer, more connected walking and cycling, helping people move easily between homes, schools, activity centres and public transport.

Our ask: A commitment to deliver continuous, well-designed walking and cycling links, improving safety, accessibility and encouraging more people to choose active, low-carbon travel.

Strengthen local emergency service infrastructure

Community benefit: Improved emergency response capability ensures faster response times, better coordination and safer outcomes during extreme weather and community emergencies, while supporting and retaining local volunteers.

Our ask: Fund and deliver fit-for-purpose SES and emergency service facilities, including prioritising the relocation and upgrade of the Glen Eira SES Unit to a suitable site, to support operational capacity, accessibility and future growth.

Align planning rules with community needs and growth

Community benefit: Supports safer, more liveable neighbourhoods by ensuring growth is matched with infrastructure, services and local amenity.

Our ask: Reform planning rules to better align growth with community needs and ensure development is supported by appropriate infrastructure, services and amenity.

Increase access to social and affordable housing through planning reform

Community benefit: Reduces housing stress and homelessness risk, helping people live safely and stay connected to services, jobs and transport.

Our ask: Require affordable housing in developments through diverse housing types and clear planning mechanisms that increase supply in areas with low stock.

KEY POLICY ASKS

Strengthen rooming house standards and safety

Community benefit: Improves safety, dignity and living conditions for vulnerable residents while supporting safer neighbourhoods overall.

Our ask: Strengthen regulations and standards for rooming houses to ensure safe, high quality and well regulated accommodation.

Improve building safety through cladding reform

Community benefit: Reduces fire risk and improves safety and peace of mind for residents living in affected buildings.

Our ask: Extend the Cladding Rectification Program to ensure building safety risks can continue to be addressed.

Improve transparency and accountability in planning reform

Community benefit: Builds community trust and confidence in planning decisions that shape neighbourhood change.

Our ask: Ensure regular and early local government input into planning reform, supported by genuine public consultation and engagement processes.

Improve domestic animal management outcomes

Community benefit: Supports safer public spaces and better interactions between people and animals, improving community wellbeing.

Our ask: Reform dog breed legislation to improve enforcement, promote fairness and reduce harm to people and animals.

Support subsidised desexing programs

Community benefit: Reduces stray and unwanted animals, improving safety, animal welfare and neighbourhood amenity.

Our ask: Provide funding for subsidised desexing of cats and dogs, including reinstating the Victorian Government desexing subsidy program.

THEME THREE

**RESILIENT
COMMUNITIES
RUNNING ON
CLEAN ENERGY**



Installing solar panels to get off gas.

WHY IT MATTERS

Climate change is here — and councils are on the frontline. Glen Eira is experiencing hotter temperatures, more extreme rainfall events and increasing pressure on energy systems, directly affecting community wellbeing and household costs.

Without local investment, these impacts will intensify — increasing heat-related health risks, flood damage and energy stress, and driving higher long-term costs across emergency, health and infrastructure systems.

We are ready to lead the transition to a cleaner, greener future. Local climate action delivers practical benefits, such as cutting emissions, lowering energy costs, reducing heat risk and protecting communities from flooding and extreme weather.

Investing now in cooler streets, flood resilient infrastructure and well designed public spaces keeps communities safe, supports faster recovery and avoids higher future costs.

Council is already taking action through electrification, urban greening, improved waste systems and biodiversity protection. But to deliver these initiatives at the scale and pace required — and ensure benefits are shared equitably — we need strong government partnership to fund delivery and enable reform.

Your impact by partnering with us

Partnering with Glen Eira on local climate action will deliver immediate benefits for communities while supporting long-term resilience and sustainability.

- Cut emissions and cost of living pressures by investing in local climate action programs that reduce energy use and lower household bills.
- Expand urban greening to meet tree canopy targets, cooling neighbourhoods, reducing heat risk and improving public health — especially in highly urbanised areas.
- Close critical water infrastructure gaps by investing in flood mitigation and integrated water management to protect homes, reduce damage and avoid rising long-term recovery costs.
- Reform waste and recycling systems to deliver better environmental outcomes while reducing complexity and cost pressures for councils and households.
- Protect and enhance biodiversity to support healthier ecosystems and create greener, more liveable neighbourhoods.
- Strengthen local disaster preparedness to improve readiness for heatwaves, flooding and extreme weather — reducing risk and supporting faster recovery.

PRIORITY PROJECTS

Accelerate our transition from gas

\$570,000 to expand the program

Timing: Multi-year project beginning in 2025–26

We need support to fully realise the *Getting Off Gas* program. We've planned a strategic rollout that includes key community facilities such as Caulfield Park Pavilion, McKinnon Kindergarten and East Bentleigh Senior Citizens' Centre. Further investment will ensure momentum is maintained and benefits are equitably distributed across neighbourhoods. This program advances our commitment to climate action by transitioning community-use facilities away from gas to 100 per cent renewable electricity. It prioritises energy efficiency, public health and long-term cost savings through electrification.



We are transitioning community-use facilities away from gas.

Implement our Urban Forest Strategy

\$550,000 to expand tree canopy

Timing: Concept design underway. Delivery can commence in 2026–27 with funding

Implementing our *Urban Forest Strategy* will expand the urban tree canopy in Glen Eira and boost local biodiversity. This work aligns with the Victorian Government's planning reforms, which require permits to remove canopy trees in residential zones and aims to protect and enhance tree cover across urban areas. We are ready to deliver on these goals locally, but we need support to do it well and at scale. This funding will enable detailed planning, including identifying priority planting areas, selecting climate-resilient species, and designing biodiversity corridors. The objective is to create a greener, cooler and more liveable City while supporting long-term environmental resilience.



We're expanding our urban tree canopy.

KEY POLICY ASKS

Build community climate resilience

Community benefit: Climate ready infrastructure helps keep people safe during heatwaves, flooding and extreme weather events. Better preparation reduces damage, supports faster recovery and protects health and wellbeing during extreme conditions.

Our ask: Co-invest in climate ready infrastructure and upgrades to community facilities so they can withstand more frequent and severe extreme weather events

Accelerate the transition to low emissions council assets

Community benefit: Cleaner, all electric community facilities reduce emissions, improve indoor comfort and lower energy costs. This supports healthier spaces for community use while delivering climate and cost of living benefits.

Our ask: Support and co-fund the transition to low emission technologies across council assets, including solar energy, electric vehicle infrastructure and energy efficient systems.

Deliver sustainable funding for flood mitigation and water sensitive urban design

Community benefit: Improved flood mitigation protects homes, roads and community facilities during heavy rainfall.

Safer neighbourhoods reduce disruption and support everyday movement and access to essential services.

Our ask: Address critical water infrastructure gaps by delivering sustainable funding tools for water sensitive urban design and flood mitigation initiatives at the local level.

Expand community-led emissions reduction programs

Community benefit: Local sustainability programs help households reduce emissions and lower energy bills.

Shared action supports healthier neighbourhoods while easing cost of living pressures.

Our ask: Expand *Community Power Purchase Agreements* and support locally delivered sustainability programs that reduce emissions and household energy costs.

Improve access to air and waterway pollution data

Community benefit: Reliable pollution information supports healthier air and waterways. This helps communities reduce exposure to environmental risks and supports safer places to live, work and play.

Our ask: Provide councils with access to air and waterway pollution monitoring data to support local action, transparency and accountability.

Strengthen planning and vegetation rules to support tree canopy growth

Community benefit: More tree canopy cools neighbourhoods, reduces heat stress and improves physical and mental health.

Greener streets also create more comfortable, liveable and resilient communities during extreme weather.

Our ask: Reform planning and vegetation clearance rules so ResCode setbacks, open space, neighbourhood character provisions and vegetation controls align with Plan for Victoria and support tree canopy targets.

KEY POLICY ASKS

Support protection and enhancement of local biodiversity

Community benefit: Stronger biodiversity supports healthier ecosystems, cooler urban environments and more attractive neighbourhoods. Access to green and natural spaces improves wellbeing and quality of life.

Our ask: Support councils to create new parks, revegetate corridors and develop biosphere links and laneway microhabitats to strengthen local biodiversity.

Back cross-sector climate collaborations

Community benefit: Coordinated climate action accelerates progress on emissions reduction and resilience. Communities benefit from faster delivery of solutions that make neighbourhoods safer and more sustainable.

Our ask: Support and recognise sector wide collaborations such as the Elster Creek Catchment Collaboration, Victorian Greenhouse Alliance, Eastern Alliance for Greenhouse Action, Climate Emergency Australia and CASBE.

Improve circular economy and recycling policy settings

Community benefit: Smarter recycling systems reduce waste, lower costs for households and improve environmental outcomes. Councils play a key role in delivery but need policy settings that support practical, local solutions.

Our ask: Rethink the kerbside glass mandate and expand the Container Deposit Scheme to include wine and spirit bottles to reduce costs, household burden and contamination. Accelerate product stewardship and deliver consistent national recycling standards to make recycling simpler and more accessible for our community.

Reduce landfill and support better waste outcomes

Community benefit: Reducing waste protects the environment and reduces long-term costs for households and communities. Better product design and recycling systems support cleaner, safer neighbourhoods.

Our ask: Reduce landfill by regulating commercial recycling, tackling hard to recycle waste (e.g. batteries, tyres, TVs), setting national recycled content targets and strengthening repair and producer responsibility initiatives. Support planning certainty and targeted investment in residual waste solutions to manage non recoverable waste and reduce landfill reliance.

Remove funding barriers to local waste action

Community benefit: Removing barriers enables more effective waste reduction and recycling initiatives. Communities benefit from cleaner public spaces, improved environmental outcomes and reduced landfill impacts.

Our ask: Remove funding constraints such as *Service Rates Guidelines* and redirect Waste Levy funds to support local waste reduction and recycling action. Provide co investment in waste reduction and resource recovery infrastructure to address system gaps and support efficient local delivery.

THEME FOUR

**FAIR AND
SUSTAINABLE
FUNDING
AND SMARTER
PARTNERSHIPS**



School crossing supervisors.

WHY IT MATTERS

Councils deliver the services communities rely on every day — but the system is under strain. We are being asked to do more, more often, without the funding mechanisms to support it.

This pressure is growing. Cost shifting from state and federal governments continues, while new legislation, increasing regulatory requirements and growing populations are driving up demand and delivery costs. At the same time, short-term and uncertain grant funding makes it harder to plan, invest and deliver long-term outcomes.

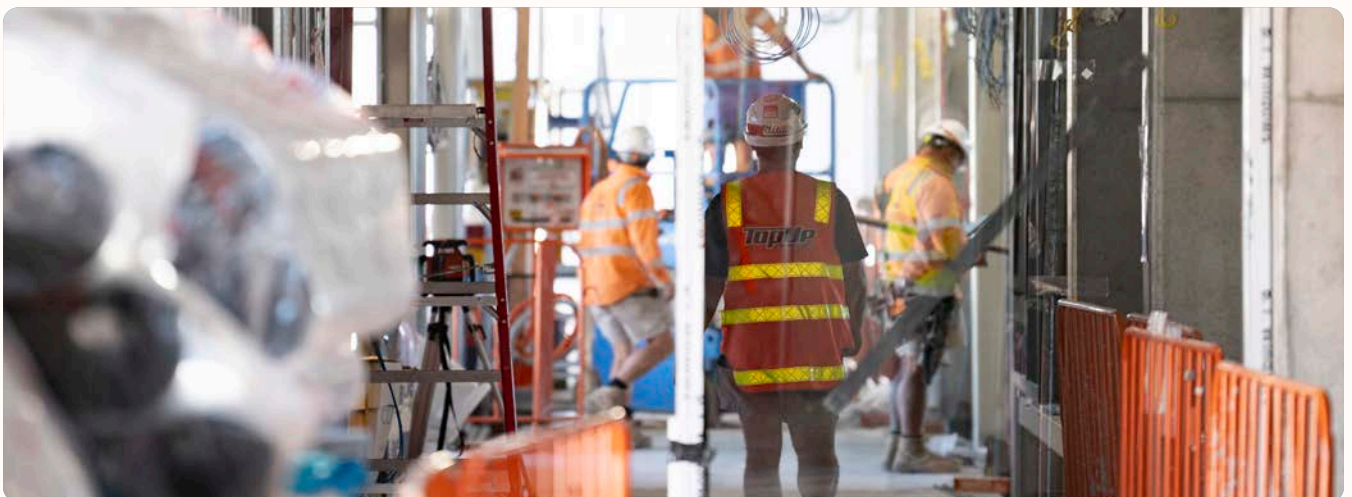
We know our communities best and are ready to deliver — but we need a stronger partnership with government and a seat at the table to reform outdated funding models.

Without change, councils will face increasing service gaps, delayed infrastructure and rising financial pressure. Fairer funding, clearer roles and more reliable investment are essential so councils can plan with confidence and deliver for growing communities.

Your impact by partnering with us

By partnering with us on funding reform, governments can strengthen service delivery, reduce long-term system risk and unlock more efficient, locally responsive outcomes.

- Fairer, more sustainable funding models ensure councils can continue delivering essential services without overburdening ratepayers or deferring critical infrastructure.
- Clearer roles and responsibilities reduce cost shifting, improve accountability and ensure services are funded and delivered by the level of government best placed to do so.
- Stronger, more integrated partnerships unlock better outcomes — from waste reform to infrastructure delivery — by leveraging local knowledge, capability and community trust.
- Embedding councils in reform processes ensures policies are practical, deliverable and responsive to real community needs.



Councils are experiencing sky-rocketing costs, especially for essential service and infrastructure delivery.

PRIORITY PROJECTS

Simplify funding rules and stop shifting costs

Current funding settings are complex, fragmented and often inflexible. Tied grants limit councils' ability to respond to local priorities, while cost shifting continues to place financial and delivery risk on councils for services outside our core role.

We need funding models that are flexible, transparent and aligned to local need — alongside clearer accountability for who funds, manages and delivers services over the long-term.

- Reduce reliance on short-term, tied grants and increase flexible funding streams that support local decision-making
- Establish clear funding responsibilities to prevent cost shifting and unfunded mandates
- Provide long-term funding certainty to enable better planning, investment and asset management

Without reform, councils will continue to manage growing financial risk and constrained service delivery — impacting community outcomes.



Community immunisation.

Value the voice of councils in policy reform and strategic planning

Early, genuine and ongoing engagement with councils leads to better policy, smoother implementation and stronger outcomes.

We are asking governments to move beyond consultation to true partnership and co-design, ensuring local expertise informs decisions from the outset.

- Embed councils in early-stage policy development, not just end-stage consultation
- Strengthen co-design approaches to ensure reforms are practical and locally deliverable
- Improve transparency and consistency in engagement processes across government
- Expand procurement partnerships to maximise value for our communities, improve service delivery and capitalise on our collective goals.

Stronger collaboration will deliver reforms that are more effective, better targeted and more sustainable over time.



Maternal and Child Health services.

KEY POLICY ASKS

Restore fair co-funding for core services

Community benefit: Protects essential services people rely on every day, supporting safer neighbourhoods, better health outcomes and stronger community connection without increasing pressure on households.

Our ask: Restore at least 50:50 funding for core services like libraries, maternal and child health and school crossings.

Cover new costs created by state and federal reforms

Community benefit: Ensures community services remain safe, reliable and accessible without disruption when new policy reforms are introduced.

Our ask: Cover new and ongoing costs created by state and federal reforms, including waste, cladding rectification, planning system changes and aged care regulatory and compliance requirements.

Stop cost shifting and clarify accountability

Community benefit: Delivers more consistent, reliable services by ensuring responsibilities are clearly funded and managed, reducing service gaps and confusion for the community.

Our ask: Address cost shifting by ensuring services and facilities that are state responsibilities are funded, governed and delivered with clear accountability.

Set fair rate capping arrangements

Community benefit: Set fair rate capping arrangements

Our ask: Link rate caps to the Local Government Cost Index and actual service delivery costs so they reflect real world pressures.

Share responsibility for local infrastructure delivery

Community benefit: Ensures growing communities have timely access to the facilities, services and infrastructure they need to live safely and well.

Our ask: Work alongside councils to plan, fund and deliver local infrastructure and create ongoing funding streams to support this work over time.

Restore stable national funding for local government

Community benefit: Provides certainty so communities continue to receive reliable services and infrastructure over the long-term, not just through one off grants.

Our ask: Restore Federal Financial Assistance Grants to one per cent of national tax revenue.

PROJECTS BY ELECTORATE

PROJECT	FEDERAL	STATE
BENTLEIGH AREA		
Centre Road, Bentleigh	Goldstein	Bentleigh
Mackie Road Reserve, Bentleigh East	Hotham	Bentleigh
McKinnon Reserve Pavilion, McKinnon	Goldstein	Bentleigh
Bailey Reserve, Bentleigh East	Hotham	Bentleigh
Porter Road Park, Bentleigh	Goldstein	Bentleigh
Allnutt Park, McKinnon	Goldstein	Bentleigh
Hodgson Reserve, Bentleigh	Goldstein	Bentleigh
CARNEGIE/MURRUMBEENA AREA		
Koornang Road, Carnegie	Hotham	Oakleigh
Carnegie Library and Community Centre, Carnegie	Hotham	Oakleigh
Ames Avenue, Carnegie	Hotham	Oakleigh
Bute Street, Murrumbeena	Hotham	Oakleigh
ELSTERWICK/CAULFIELD AREA		
Elsternwick Community Hub, Elsternwick	Macnamara	Caulfield
The Elsternwick Club, Elsternwick	Macnamara	Caulfield
Caulfield Park, Caulfield	Macnamara	Caulfield
Glen Huntly Road, Caulfield South	Goldstein / Macnamara	Caulfield
Elsternwick Green Link, Elsternwick	Macnamara	Caulfield
Alma Village streetscape upgrade	Macnamara	Caulfield
Kooyong Road streetscape upgrade	Macnamara	Caulfield
CROSS-ELECTORATE		
Collective model to address homelessness		
Urban Forest Strategy		
Getting off Gas program		



GLEN EIRA CITY COUNCIL

BENTLEIGH
BENTLEIGH EAST
BRIGHTON EAST
CARNEGIE
CAULFIELD
ELSTERNWICK
GARDENVALE
GLEN HUNTLY
MCKINNON
MURRUMBEENA
ORMOND
ST KILDA EAST

Glen Eira City Council

Corner Glen Eira and Hawthorn Roads, Caulfield

Mail address: PO Box 2421
Caulfield Junction VIC 3161

Phone: (03) 9524 3333
mail@gleneira.vic.gov.au
www.gleneira.vic.gov.au

National Relay Service

A phone solution for people who have a hearing or speech impairment. Internet relay users connect to NRS then ask for 03 9524 3333.

TTY dial 13 36 77 or Speak and Listen dial 1300 555 727 then ask for 03 9524 3333. <https://internet-relay.nrscall.gov.au>

Social media

Glen Eira City Council:

www.facebook.com/GlenEiraCityCouncil

@cityofgleneira:

www.instagram.com/cityofgleneira

LinkedIn:

www.linkedin.com/company/glen-eira-city-council

Glen Eira arts, gallery and events:

www.facebook.com/gleneiraarts
www.instagram.com/gleneiraarts

Glen Eira Leisure:

www.facebook.com/GESAConline
www.instagram.com/gleneiraleisure

Glen Eira Libraries and Learning Centres:

www.facebook.com/GlenEiraLibraries
www.instagram.com/gleneiralibraries

Glen Eira sustainable living:

www.facebook.com/sustainablelivinggleneira

Glen Eira Youth Services:

www.facebook.com/GlenEiraYouthServices
www.instagram.com/gleneirayouthservices