

A smiling couple, a woman and a man, are in a garden. The woman is on the left, wearing a dark blue long-sleeved shirt and gardening gloves, holding a small plant. The man is on the right, wearing a green textured sweater and gardening gloves, holding a small plant. They are both smiling and looking towards the camera. The background is a lush garden with various plants and flowers.

*City of*  
**GLEN  
EIRA**

GLEN EIRA  
CITY COUNCIL

BENTLEIGH  
BENTLEIGH EAST  
BRIGHTON EAST  
CARNEGIE  
CAULFIELD  
ELSTERNWICK  
GARDENVALE  
GLEN HUNTLY  
MCKINNON  
MURRUMBEENA  
ORMOND  
ST KILDA EAST

# OUR CLIMATE EMERGENCY RESPONSE STRATEGY 2021–2025

## DHUMBALI WURRUNGI-BIIK PARBIN-ATA





## **DHUMBALI WURRUNGI-BIIK PARBIN-ATA**

*Dhumbali Wurrungi-biik Parbin-ata* is the Boonwurrung name of this Strategy and translates to 'Our Commitment to the Laws of Mother Earth'.

As the Traditional Owners and Custodians, they emphasise the importance that change and action starts within. The content in *Dhumbali Wurrungi-biik Parbin-ata* is more than words but a call to action and responsibility to Country, as has been written in Bundjil's Dhumbali.

## **ACKNOWLEDGEMENT OF COUNTRY**

The City of Glen Eira acknowledges the Boonwurrung people of the Kulin Nation as the Traditional Owners and Custodians of the land on which Glen Eira resides.

We pay our respects to their Elders past, present and emerging, and acknowledge and uphold their continuing relationship to this land.

Glen Eira is situated on the traditional estate of Yaluk-ut Weelam clan of the Boonwurrung language group.

At the time of endorsement of this document, Registered Aboriginal Party status through the Victorian Aboriginal Heritage Council, was contested by the Bunarong Aboriginal Land Council Association and the Wurundjeri Woiwurrung Land and Sea Council.

The Victorian Aboriginal Heritage Council recently granted Registered Aboriginal Party status to the Bunarong Aboriginal Land Council Association to take effect from 1 July 2021 which may impact the content of this Strategy.

# BOONWURRUNG TRADITIONAL OWNERS AND CUSTODIANS

## THE FILLING OF THE BAY — THE TIME OF CHAOS

**Kulin people have a deep knowledge of and connection to Nairm (Port Phillip Bay) and the surrounding landscape, developed over generations, and continuing to this day. Boonwurrung Elder, N'Arweet Dr Carolyn Briggs AM generously shares the story of how Nairm came to be and why we must continue to protect it.**

Many years ago the biik we now call greater Melbourne extended right out to the warreeny. Nairm (Port Phillip Bay) was then a large flat grassy plain. The Yarra River, as it is known today, flowed out across this flat plain into the warreeny. For the Boonwurrung, this wurneet was known as Birrarung (the river of mists).

This large plain was covered in buath and tarrang biik on which the Boonwurrung men hunted gyeem and barramaeel. The bagurrrk cultivated the murnong. They collected food from the wurneet and the warreeny and harvested the iilk that migrated through there every year.

The Boonwurrung were the custodians of their biik but traded with and welcomed people from other parts of the Kulin Nation. They obeyed the laws of Bundjil, who travelled as an eagle, and Waang who travelled as a crow.

One day — many, many years ago — there came a time of chaos and crisis. The Boonwurrung and the other Kulin nations were in conflict. They argued and fought. They neglected their biik. The native murnong was neglected. The animals were over killed and not always eaten. The gurnbak were caught during their spawning season. The iilk were not harvested.

As this chaos grew the warreeny became angry and began to rise. The wurneet became flooded and eventually the whole flat plain was covered in baany. It threatened to flood their whole birrarang-ga.

The people became frightened and went to Bundjil, their creator and spiritual leader. They asked Bundjil to stop the warreeny from rising.

Bundjil was angry with his people, and he told them that they would have to change their ways if they wanted to save their land. The people thought about what they had been doing and made a promise to follow Bundjil.

Bundjil walked out to the warreeny, raised his tjeera and directed the warreeny to stop rising. Bundjil then made the Boonwurrung promise that they would respect the laws.

The baany never subsided but stayed to create a large bay that the Boonwurrung called Nairm. Today it is known as Port Phillip Bay. The warreeny took away much of the biik of the Boonwurrung and much of their birrarang-ga was reduced to a narrow strip of coastline.

The Boonwurrung learnt from their mistakes. They returned to their old values and the laws of Bundjil. They took greater care of the biik of Bundjil and the bubup of Bundjil.

They met with the other Kulin people and sorted out their differences through sports, debates and dance.

One of the most important laws that Bundjil required to be obeyed was for Boonwurrung people to always welcome visitors, and to require all visitors to make a promise that they would obey the laws of Bundjil, not hurt the biik of Bundjil and not harm the bubup of Bundjil.

Today, the wurneet that once flowed through this large flat plain still flows under the Nairm.



baany — water  
bubup — child  
Nairm — Port Phillip Bay  
bagurrrk — woman  
Bundjil — eagle (Creator)  
tarrang biik — woodlands  
barramaeel — emu  
guleeny — man

tjeera — spear  
Biik — land  
gumbak — fish  
Waang — crow  
Birrarung — Yarra River (River of Mist)  
gyeem — kangaroo  
warreeny — sea

birrarang-ga — country ('river location')  
iilk — eel  
wurneet — river  
buath — grass  
murnong — yam daisy

Glen Eira City Council has been granted cultural permission to include this story. Please note that reproduction beyond this communication requires liaison with N'Arweet Dr Carolyn Briggs AM as the author and keeper of the cultural intellectual property. Contact the Boonwurrung Land and Sea Council for more information.

## GLEN EIRA PEOPLE AND PLACE

**The municipality of Glen Eira rests on the lands of the Boonwurrung people who have lived on and been connected to this land for thousands of years. They have witnessed changes in climate and seasonal cycles over millennia, continually finding ways to adapt and thrive. This knowledge and connection continues today, alongside the huge diversity of people who live, work and play in Glen Eira.**

While very much part of greater Melbourne, Glen Eira has unique and much loved qualities that this *Strategy* seeks to help preserve and enhance. Here's just a taste of what makes us special...

"I have two favourite places. Booran Reserve – because that's where the Koorie Chill Out is held on 26 January, and Mallanbool Reserve – because it has signs that tell you about First Nations' plants and history. It's also a good gathering place to meet up with people and talk about what's on your mind." — UNCLE GREG

"In Glen Huntly, we have a park or playground on every corner, in every direction. Nothing's really that far from a cafe either. It's just so fantastic to be able to have that access and we've met so many neighbours that way." — LINDSAY

"The Koornang Park is a melting point of cultures, an oasis where we meet people and they become friends for life. The lush green oval is a great place for kids to run and play and it lifts our spirits each day. I thank the council which maintains it so beautifully and gives us a cosy corner to discover the kid in each one of us. With the wind in our hair, we fly high in the air!" — DEEPA

"I'm part of a litter collection group that I formed in 2017. At first, I thought that I was the only person that saw this litter on the ground, but we started promoting the group and we've had hundreds of volunteers come over the last few years. We've collected more than a tonne of litter. I've met all these amazing people that I would never have met if we didn't come together in this way. It's really nice to feel like we're doing something together." — SOPHIE

"My favourite place in Glen Eira is Elster Creek Trail. I use the Trail almost every day. It's a lovely place and also it's very safe. Sometimes my son just rides his bicycle by himself and I don't worry at all." — LI

"That I explored so many new parks and that became destinations from my walking during COVID. There are great parks all over the place. It was a real sense of exploration. And enjoyment." — JUDY

"My favourite part of Glen Eira is actually the Caulfield hospital. That might sound a little bit strange, most lunchtimes I take a short walk down a leafy path and up a cobblestone lane to a wooden door that opens up to a little oasis of quiet green space. It's a great place to just think." — RON

"Caulfield Park is absolutely sensational and I didn't appreciate it all until I started walking it in the last four months." — SAM



# TABLE OF CONTENTS

<b>GLEN EIRA PEOPLE AND PLACE</b>	4
<b>MESSAGE FROM MAYOR</b>	6
<b>EXECUTIVE SUMMARY</b>	8
<b>THIS STRATEGY</b>	10
REPORTING AND STORYTELLING	10
UPDATING THE STRATEGY AND ACTION PLAN	10
<b>COMMUNITY VISION</b>	11
PRINCIPLES	11
<b>CLIMATE CHANGE AND SUSTAINABILITY IN GLEN EIRA</b>	12
CLIMATE CHANGE RISKS AND IMPACTS	12
NATIONAL IMPACTS	13
IMPACTS IN GLEN EIRA	14
IMPACTS IN GLEN EIRA	15
10 YEARS OF ACTION	16
KEY CHALLENGES	18
KEY OPPORTUNITIES	19
<b>ROLES IN CLIMATE ACTION</b>	20
INTERNATIONAL	20
FEDERAL GOVERNMENT	21
STATE GOVERNMENT	21
LOCAL GOVERNMENT	21
BUSINESS AND INDUSTRY	21
HOUSEHOLDS	22
SCHOOLS, COMMUNITY ORGANISATIONS AND GROUPS	22
<b>OUR GOALS AND OBJECTIVES</b>	23
SYSTEMIC	24
ADAPTATION	25
MITIGATION	26
<b>OUR ACTION PLAN</b>	28
<b>MONITORING AND EVALUATION</b>	37
<b>HOW THIS STRATEGY WAS DEVELOPED</b>	42
<b>GLOSSARY</b>	43



## MESSAGE FROM MAYOR



**I am pleased to present *Our Climate Emergency Response Strategy 2021–2025*. All around the world communities are taking up the challenge of dealing with climate change. Similarly, Glen Eira Council has been working to combat climate change through previous *Environmental Sustainability Strategies*. In May 2020 we declared a climate emergency and set ambitious new emissions targets for both Council operations and the community.**

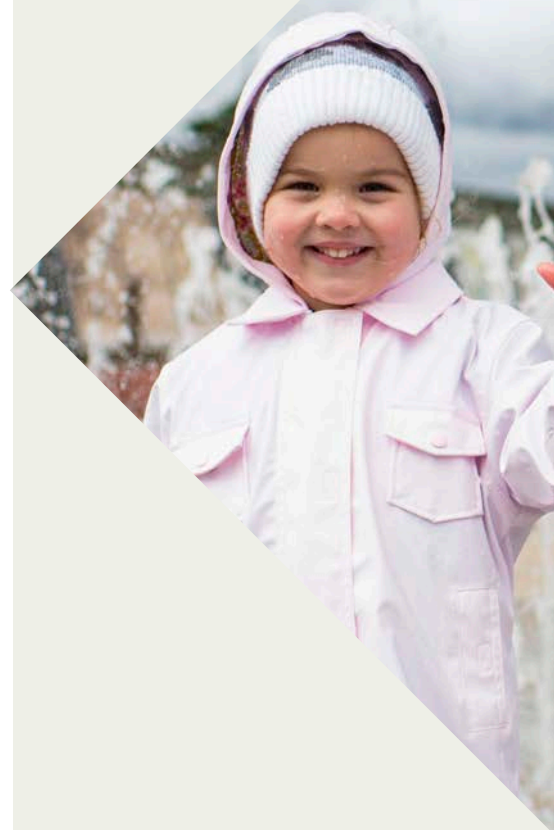
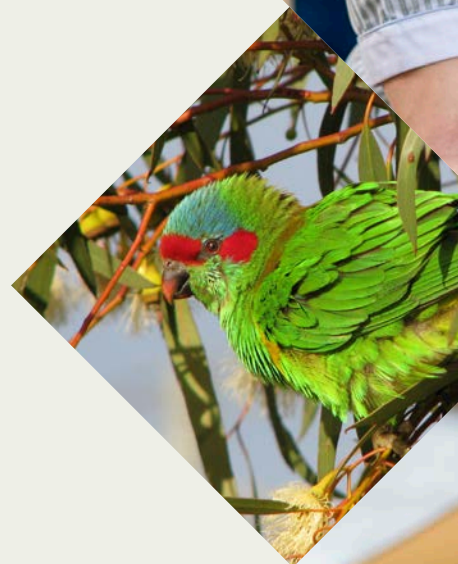
This bold new *Strategy* reflects our commitment to strong and fast action on climate change. We will lead by example and work hard to cut our own carbon footprint. We will support the Glen Eira community by educating, informing, mobilising and facilitating a transition to a low-carbon way of life. The commitment of individuals is critical.

We will also advocate to the Victorian and Federal Governments for stronger policy and legislation for a climate-friendly future.

All of Council's decisions will be considered through the lens of climate change. Acting on climate change will have many economic, social and environmental benefits.

Through the principles outlined in this *Strategy*, we will work together to create a sustainable, liveable and resilient Glen Eira.

**Cr Margaret Esakoff**  
Mayor







THERE IS NO  
PLANET B

PLASTIC  
FREE  
*Elsternwick*

We are going plastic free

For further information, contact [sustainability@elsternwick.vic.gov.au](mailto:sustainability@elsternwick.vic.gov.au)



Elsternwick  
Council



## EXECUTIVE SUMMARY

**Urgent climate change action is essential to help us secure our Glen Eira community vision: a thriving community of empowered citizens working together for an inclusive and sustainable future.**

Climate change is happening right now and we have all experienced the impacts. Without concerted efforts across the globe, these impacts will only worsen.

So far, local, national and global action has not been enough to overcome the scale and urgency of the problem. Recognising this, we declared a climate emergency in May 2020, and committed to:

- **work even harder** to address climate change at a local level; and
- **advocate to State and Federal Governments** to maximise their broad reaching powers to urgently reduce and draw down emissions, while preparing the Victorian community for climate impacts.

The cost of inaction on climate change is high. It will hit our back pockets, become even more detrimental to our health, and impact the liveability and beauty of Glen Eira. Research shows that early and pre-emptive action is much more cost effective than waiting for disaster to strike.

While climate change is concerning, the good news is that we are starting to see positive changes. In Australia, nearly 100 jurisdictions representing nine million people — over one-third of the population — have declared a climate emergency. In Victoria, emissions have dropped to their lowest level in more than 30 years — 2020 emissions were 27 per cent lower than in 2014. And, here in Glen Eira, we are now powering all Council-owned buildings and infrastructure with 100 per cent renewable energy.

In this *Strategy*, we are committing to deliver 70 actions to help deliver six goals:

### GOAL 1

**We embed climate change action in everything that we do**

### GOAL 2

**Our community is active and mobilised on climate action**

### GOAL 3

**Council-owned buildings and infrastructure are resilient and safe for our staff and community**

### GOAL 4

**Our community is protected from the worst impacts of climate change**

### GOAL 5

**Zero direct Council emissions by 2031**

### GOAL 6

**Net zero community emissions by 2030.**

To have the biggest possible impact, we will:

- **Work in close partnership** with our community, including learning from Traditional Owners.
- **Replicate the successes** and learn from the trials of other like-minded councils.
- **Deliver strategic initiatives** and share our insights with other councils.



Four exciting innovation areas have been identified to deliver strongly on community priorities and build on our current strengths:

<div><div>EXPLORE INDIGENOUS ECOLOGICAL KNOWLEDGE</div><div></div></div>	<p>Much cultural knowledge has been lost but there are still imprints and memories that can be rekindled for the benefit of the whole community.</p>	<p>In partnership with the local Traditional Owners, we will explore how Boonwurrung knowledge of climate and climate change allow us to respond to the climate emergency.</p>	<p>We will ask what the impacts of the climate emergency will be on local First Nations people; their health and livelihoods, their connection to community, and their connection to Country.</p>
<div><div>APPLY THE CLIMATE LENS</div><div></div></div>	<p>Through our climate emergency declaration and emissions goals, we have demonstrated strong leadership.</p> <p>Our community has asked us to strengthen this leadership and invite everyone to participate.</p>	<p>We will make changes to our systems so that climate action is embedded into the way we work every day.</p> <p>We will tell the truth about climate change impacts and solutions, and work with our community to amplify messages.</p>	
<div><div>MAXIMISE AND DIVERSIFY OUR GREEN AND NATURAL SPACES</div><div></div></div>	<p>Our community has asked us to preserve, regenerate and maximise green and natural spaces, recognising that it underpins the health and wellbeing of our community and the broader ecosystem.</p>	<p>In partnership with our community, we will create a thriving natural environment that connects to the Greater Melbourne Urban Forest.</p>	
<div><div>SUPPORT A CIRCULAR ECONOMY</div><div></div></div>	<p>In partnership with our community, we have been at the forefront of waste minimisation and recycling in Victoria.</p>	<p>Building on this success, we will look beyond the pervasive take-make-waste extractive model and investigate ways to support a circular economy.</p>	<p>We will upskill our staff and our community so together, we can explore how to design out waste and instead, keep products and materials in use.</p>

We look forward to working with you, our local community, and in partnership with other councils and other levels of government, to face climate change head on and make a real difference.

## THIS STRATEGY

**In May 2020, Glen Eira City Council declared a climate emergency and joined the growing movement calling for urgent action to address climate change. Our *Climate Emergency Response Strategy* sets out how we will:**

- respond to the climate emergency in our own operations;
- support the community to take action; and
- advocate to, and partner with governments to drive stronger action.

This *Strategy* builds on the work completed to date and supersedes our *Environmental Sustainability Strategy 2016–2021*.

It helps deliver the *Community Vision* and because climate change has a direct or indirect impact across Council operations, it is a tier one strategy that sits directly under the *Council Plan 2021–2025* in Council's Integrated Planning and Reporting Framework.

The implementation of the *Strategy* is supported by *Our Action Plan* on page 28 with specific, timebound actions. While the *Strategy* is led by the Climate and Sustainability team, actions will be integrated into annual work plans right across Council to ensure climate action is truly integrated into our planning, delivery and reporting systems.

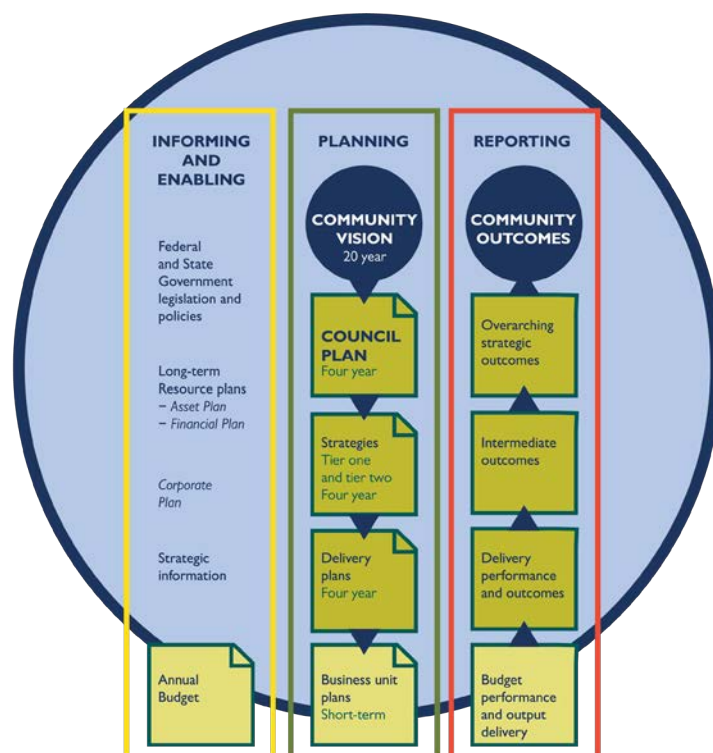
Going forward, every other strategy, plan or policy that is developed or refreshed will outline opportunities to contribute to the goals and objectives set out in this *Strategy*.

### REPORTING AND STORYTELLING

An annual *Climate Emergency Response Strategy Report* will be published to track and share our progress with the Glen Eira community and partners (replacing the previous *Glen Eira Sustainability Report*). Success stories and insights related to the *Strategy's* implementation will be shared publicly throughout the year to help maintain momentum around local climate emergency action. You can read more about this on page 37.

### UPDATING THE STRATEGY AND ACTION PLAN

Our *Action Plan* will be updated annually (if required), to reflect changing needs and opportunities and respond to monitoring evaluation findings. A new *Strategy* and associated *Action Plan* will be developed in 2024–5.





The Glen Eira 2040 Community Vision identifies the future aspirations and hopes of the people living or connected to Glen Eira for the next 20 years. The Community Vision was developed by the community for the community, led by a Deliberative Citizens Panel and an extensive community engagement program.

This Strategy will be integral in bringing our Community Vision to life.

**“Our Glen Eira: A thriving and empowered community working together for an inclusive and sustainable future.”**

## PRINCIPLES

Six principles support the Community Vision and are intended to express the most important themes that emerged during the development of the Community Vision. Here is how the principles will guide the implementation of the *Strategy*.

### PRINCIPLE 1

#### **We work together**

Through collaboration with local community organisations, the Sustainability Advisory Committee and responsive community programs, Council will make space for everyone in our community to collaborate for a more sustainable Glen Eira. We will continue to work in partnership with regional alliances, other local councils and levels of government to share great ideas and pool resources to increase impact.

### PRINCIPLE 2

#### **Planning for community resilience**

In the face of climate change, we must increase our resilience. This requires consideration of our social, environment and economic systems, and how they interact. It requires us to be responsive and adaptable. Council will work to embed climate action across all departments to take advantage of the diversity of skills in our organisations. We will actively share information to help our community understand and respond to our changing climate.

### PRINCIPLE 3

#### **Inclusive and healthy community**

Climate change has a direct impact on human health and wellbeing. Segments of our community are particularly vulnerable to these impacts, including older people, renters living in poor quality housing, low-income households, people with chronic illnesses, women and homeless people. Council will provide a diversity of climate action opportunities to meet the differing needs and capacity that exists in Glen Eira.

### PRINCIPLE 4

#### **Maximise and diversify our green and natural spaces**

A healthy natural environment is fundamental to a healthy community. Climate change is already impacting our green spaces. Council will work in collaboration with our community to provide equitable access to green open space that thrives and provides essential habitat, even in the face of climate change.

### PRINCIPLE 5

#### **We are proactive in meeting challenges and innovate using evidence-based methods**

Given the scale of the problem and the finite resources of councils, tackling climate change requires concerted collaboration. We will balance innovation work with initiatives that have proven effective in other councils and organisations. We will gather data to support smart investments, advocate for larger-scale solutions and share what we learn, so that together we can make deeper emissions cuts and adapt more quickly.

### PRINCIPLE 6

#### **Promote and develop our creative potential, celebrating our diverse identities through art and other cultural expression**

It is essential that everyone in our community understands climate change, how it will impact our lives and what we can do about it. Council will - amongst other channels - invest in art and cultural programs to engage our diverse community in climate conversations and action. Rekindling Boonwurrung cultural and ecological knowledge is integral to the Strategy, where history, stories and ideas can be reinterpreted to give insightful and practical lessons for today's community.

# CLIMATE CHANGE AND SUSTAINABILITY IN GLEN EIRA

## CLIMATE CHANGE RISKS AND IMPACTS

**In Glen Eira and around the globe, we are facing a crisis. Climate change is upon us, and its impacts are getting more severe each year.**

Climate change is no longer an issue for us to address in the future. It must be urgently addressed by all governments, businesses, organisations, communities and households.

Without urgent and large-scale action, these risks will continue to impact all facets of our lives with increasing severity.

In Victoria, the key climate risks are:



Lower rainfall



More frequent and intense heavy downpours



Rising sea level and increased frequency and height of extreme sea level events



Longer, more extreme fire seasons



Reduction in air quality due to bushfires



Higher temperatures year-round and more frequent and extreme heat waves



Fewer frosts

## CLIMATE CHANGE SOLUTIONS:

### MITIGATION AND ADAPTATION



**Mitigation and adaptation are types of climate action. Both types of actions are critical to address the climate emergency and work toward a truly just and livable future. As the Intergovernmental Panel on Climate Change (IPCC) made clear: “Many adaptation and mitigation options can help address climate change, but no single option is sufficient by itself. Effective implementation depends on policies and cooperation at all scales and can be enhanced through integrated responses that link mitigation and adaptation.”**

#### ADAPTATION

The IPCC defines adaptation as “the process of adjustment to actual or expected climate change and its effects.” It’s doing what we can to live with and minimise the destruction and suffering from climate change.

Imagine you’re on a ship that’s sinking because of a leak. If you want to stay afloat, you’ve got to act. You get a bucket and pour water out as it gushes through the hole. This response is adaptation — addressing the effect (the water in the boat), but not the cause of the problem (the hole).

An example of adaptation in Glen Eira is planting more trees. This helps cool the City, provides health and recreation benefits for our community, and grows essential habitat for insects and wildlife.

#### MITIGATION

The IPCC describes mitigation as “human intervention to reduce the sources or enhance the sinks of greenhouse gases.”

Back aboard to our sinking ship. If adaptation is pouring water out to stay afloat, sealing the leak to stop more water coming in is mitigation. In other words, it’s addressing the root cause of the problem rather than dealing with its effects.

An example of mitigation in Glen Eira is installing solar panels to generate clean renewable energy on-site.



## NATIONAL IMPACTS



HEALTH AND COMMUNITY	ENVIRONMENT	INFRASTRUCTURE	PRIMARY PRODUCTION
More stress on health and emergency services	Amplification of existing threats to flora and fauna	Increased flood damage	Earlier flowering and planting times
More heat-related deaths, particularly among the elderly and disadvantaged	Habitat loss, degradation and fragmentation	Increased maintenance costs	Changed distribution of pests and diseases
Mental health effects	Altered disturbance regimes	Extreme heat impacts	Farm business affected by bushfire
Changes in disease occurrence	Changing dynamics of invasive species	Increased disruption to services	Changes in pasture growth
Increased respiratory conditions associated with poor air quality	Bushfires and smoke haze	<b>EXAMPLE:</b> Cost of weather-related disasters in Australia has significantly increased over the last 50 years — \$12.5b in 1970s to \$25b in 2010s. This is expected to exceed \$100b by 2038 <sup>3</sup> .	Reduced water security
<b>EXAMPLE:</b> During the 2014 heatwave, Melbourne experienced four consecutive days above 41°C. This left parts of Melbourne without electricity, thousands of commuters stuck and an estimated 167 excess deaths <sup>1</sup> .	Altered rainfall patterns		<b>EXAMPLE:</b> Climate change is already impacting our food systems. Both the price and availability of food will be increasingly affected, particularly without more localised and adaptive agricultural and distribution systems.
	<b>EXAMPLE:</b> The 2020 Royal Bushfire Commission found that climate change is already increasing the frequency and intensity of extreme weather and climate systems <sup>2</sup> .		

<sup>1</sup> <https://www2.health.vic.gov.au/Api/downloadmedia/%7BDC381402-DF8F-42A5-8153-2BDF690F5402%7D>

<sup>2</sup> <https://naturaldisaster.royalcommission.gov.au/publications/royal-commission-national-natural-disaster-arrangements-report>

<sup>3</sup> <https://www.climatecouncil.org.au/wp-content/uploads/2021/01/hitting-home-report-V7-210122.pdf>

## IMPACTS IN GLEN EIRA

### FOR OUR COMMUNITY

The health, mobility and prosperity of our community will be impacted by climate change:

Rising cost of food, particularly essential fresh fruit and vegetables

Increased insurance premiums for some homes and businesses (and the possibility of some properties becoming uninsurable)



Financial pressure associated with property damage from extreme rainfall events

Transportation challenges associated with flood and heat events, including disruption to public transport



People with existing mobility issues will find travel even more challenging during extreme weather



# 6,204

local residents have a disability requiring daily assistance with life tasks and have to access critical services which are likely to be disrupted during extreme weather

# 13,369

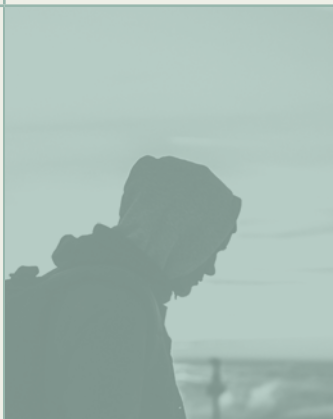
local carers of the elderly and people with disabilities are likely to see an increase in their workloads due to events such as heatwaves

Our young people will be more exposed to climate change impacts over their lifetime. The psychological impact — often referred to as climate anxiety — is prevalent in Australia's youth

# 20%

of our population are aged 60 years or over, who are more susceptible to climate risks, particularly heat stress

Low-income and homeless segments of our community will be additionally exposed to pressures such as rising energy costs and have less ability to protect themselves from extreme heat and other weather events







# 17,575

local residents living in rental properties have little control over the thermal performance of their home, leaving them more vulnerable to heat events



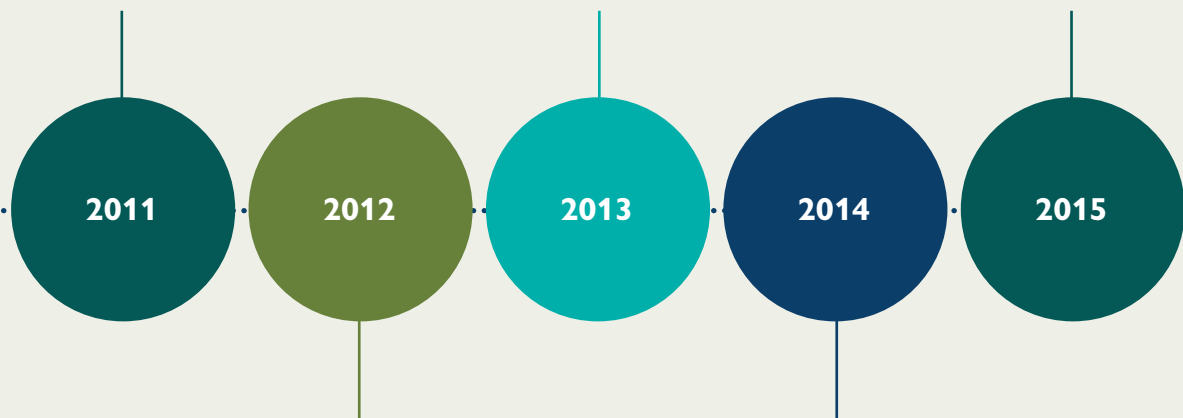
IMPACTS IN GLEN EIRA

<div>FOR COUNCIL</div>		<div>\$2.2 bil</div> <div>As at 2020, Council owns buildings and assets to the value of \$2.2 billion. Repair costs associated with damage from extreme weather events is a risk to Council’s financial sustainability</div>	<div>Disruption and increasing workloads on community service staff during extreme weather events</div>
<div>Increased demand for Council emergency services, such as relief centres and temporary accommodation</div>		<div>Staff health and wellbeing threatened during extreme weather</div>	
	<div>Increased investment needed to water and maintain open space</div>		<div>Tree and habitat loss due to lack of water and/or heat stress</div>
	<div>Increased insurance costs</div>	<div>Pressure to invest in and deliver new services in response to changing community needs</div>	

## 10 YEARS OF ACTION

We have a long history of working on environment, sustainability and climate change.

- Adopted the first Carbon Emissions Reduction Plan 2011–2020
- Held the fifth annual Community Environment Forum
- The Sustainability Advisory Committee entered its second year of operation
- 1,721 street trees were planted
- Introduced the *Glen Eira Energy Saving Program* to install small energy saving products in homes and businesses
- Joined the successful advocacy effort for level crossing removals to improve Victoria's train network
- Solar installed at GESAC and Glen Eira Town Hall
- 2,000 street trees were planted
- Continued to convert ovals to warm season grasses, using approximately 25 per cent less water for each oval



- Commenced the street lighting upgrade program with 5,395 lights upgraded
- 1,684 street trees were planted
- Glen Eira Sports and Aquatics Centre (GESAC) constructed, with innovative water-efficiency design and fixtures
- Held the first Glen Eira Community Biodiversity Forum

- Established the *Neighbourhood Sustainable Gardening Program* with more than 800 members
- Established the *Glen Eira Teachers Environment Network*
- 1,681 street trees were planted
- *Open Space Strategy* adopted, including strengthened protection and retention of all remnant indigenous trees and planting indigenous species

### BOONWURRUNG PEOPLE

Deep connection to country for tens of thousands of years

- Joined the Eastern Alliance for Greenhouse Action (EAGA)
- Solar installed at Caulfield Park Pavilion, Bentleigh Youth Information Centre, McKinnon and Glen Huntly Maternal and Child Health Centres, DC Bricker Pavilion, Packer Park Pavilion and Duncan Mackinnon Pavilion
- 2,038 street trees were planted
- Worked with Melbourne Water and partner councils on the development and delivery of the the *Elster Creek Catchment Flood Management Plan 2017–2021* with the aim to prevent flooding
- Established the *Strategic Transport Advisory Committee*
- Upgraded an additional 1,315 streetlights to LED
- Delivered 21 free sustainable living webinars to more than 1,300 people, in partnership with other councils
- Funded the development of the Bentleigh East Village Community Garden
- Developed a new *Integrated Transport Strategy* which aims for a 50:50 share of car and non-car trips by 2031
- Established the *Nature Next Door* citizen science program
- Joined the Council Alliance for a Sustainable Built Environment (CASBE)
- Joined the successful advocacy effort for statewide minimum rental standards to improve the safety, comfort and efficiency of all rental properties
- Planted 1,000 trees, including at the new urban forest at Booran Reserve
- Installed park benches, seating and dog agility equipment made from recycled materials in Caulfield Wedge Dog Park (Pawfield Park)

2016

2017

2018

2019

2020

- Provided \$437,063 to 142 local not-for-profit community groups and organisations to encourage community strengthening and inclusion
- 2,090 street trees were planted
- Set the goal of net zero emissions from Council operations by 2030
- Set the goal of net zero carbon emissions from the community by 2050
- Food waste recycling was introduced into green bins, along with an award-winning communications program
- 2,077 street trees planted
- Commenced the *Simple Energy Advice for Residents* program
- Developed the *Biodiversity Implementation Plan 2018* to protect and enhance Glen Eira's biodiversity and natural environment.
- Declared a climate emergency and joined Climate Emergency Australia to advocate for stronger action on climate change
- Set more ambitious targets of zero emissions from Council operations by 2025 and community by 2030
- 15 per cent more food and garden waste recycled through the green bin when compared with 2018–19
- The *Plastic-free Elsternwick Trial* eliminated more than 25,000 pieces of single-use plastic across 18 businesses. Four businesses eliminated single-use plastic packaging entirely
- Committed to a *Local Government Power Purchase Agreement* to move to 100 per cent renewable energy from 2021
- Adopted the Classified Tree Local Law and created the Classified Tree Register
- Installed two electric vehicle charging stations at the Town Hall and purchased two electric fleet vehicles
- *Youth Climate and Sustainability Action Group* formed to support young people take climate action



## KEY CHALLENGES

**Glen Eira faces a number of key challenges, many of which are shared with Greater Melbourne and other local governments.**

**Increasing open space needs:** Glen Eira has the least amount of open space per person of any council area in Melbourne. Glen Eira's population is expected to reach 180,626 by 2036. This 15 per cent increase over 15 years will only increase the need for open space. Restrictions associated with the 2020 COVID-19 pandemic highlighted the need for equitable, high quality and ample open space to support human health. Responding to climate change also requires open space to support active transport corridors, growing the urban forest and cooling the City. Finding and maintaining the necessary quantity of open space right across the municipality is an ongoing challenge.

**Transport and parking:** How people travel in our municipality is closely tied to the climate emergency. Eighteen per cent of local emissions come from transport. Historically, our cities were designed to prioritise cars, trucks and buses but with population growth it is becoming mathematically impossible to fit more vehicles on our fixed road network, and still get around easily and efficiently. Supporting the community to significantly reduce or cease the use of internal combustion engine cars, and instead access more local services, use active and public transport, and switch to electric vehicles is a challenge that requires support from councils, State and Federal Governments.

**Community mobilisation:** While Glen Eira has a passionate and connected community, local mobilisation around climate change is not yet at the scale needed to reduce local emissions to net zero and increase pressure on State and Federal Governments to urgently scale up climate action. This lack of mobilisation also has implications for adaptation. Without an understanding of how climate change will impact them, the community cannot play an effective role in preparing their homes and businesses for impacts that are already upon us and will become increasingly severe.

**Densification and apartment living:** Glen Eira is densifying to make space for a growing population. With respect to climate change there are pros and cons with higher density housing. Living more closely together can open opportunities for the sharing economy, increase local services and reduce the need for travel, and enable more people to live close to public transport. There is also potential to improve the environmental and thermal performance of new homes as they are designed and built. On the other hand, increasing densification can eat into much needed private open space as backyards once filled with canopy trees and vegetation become apartment complexes. Densification brings more concrete and other hard surfaces into our cityscape, reducing permeability and leaving less room for nature. There are also additional challenges in delivering sustainable waste and retrofit services to apartment buildings due to space constraints and the complexities related to owners corporation regulation and operations. Buildings of the future will be expected to do more with less, maintain affordability and amenity, and be creative in how they provide vegetation and ecological benefit for the community.

**Sphere of influence:** While we are committed to ambitious climate change goals, the opportunities for us to directly drive down emissions and ensure our City is adapted to climate change are constrained. State and Federal Governments have the strongest emissions reduction levers and will need to do the heavy lifting if our community is to reach net zero emissions by 2030. Given this, we are focussed on delivering best practice in our own operations, working in partnership with the community and other stakeholders, and strongly advocating to State and Federal Governments. See the Roles in Climate Action section on page 20.

## KEY OPPORTUNITIES

Research by external consultants identified strengths and opportunities that can be leveraged to deliver our climate emergency response.

**Corporate systems:** High quality planning and reporting systems are in place. This strength can be leveraged to help embed climate action right through our planning, reporting and administration systems, helping all staff to play their best-fit role in climate action.

**Truth-telling about climate change:** Our award-winning education campaign related to the inclusion of food scraps and other organics into the green bin demonstrates the potential of local messaging. We can leverage the huge diversity of our communication channels, and those of key partners, to deliver a strong mobilisation campaign built around success stories, avenues for action and the honest truth about climate change.

**Invest now<sup>4</sup>:** Investing in climate action today will deliver maximum benefit through avoided losses (eg. damage to infrastructure during extreme weather), positive economic benefits from reducing risk, and social and environmental benefits. The Global Commission on Adaptation estimates that climate-resilient infrastructure adds about 3 per cent to upfront costs but provides \$4 in benefits for every \$1 of cost. We have demonstrated the value of early investment through the multi-million dollar savings generated through solar installations on our buildings and efficient street lighting upgrades.

**Strengthening adaptation:** We have set strong targets and delivered consistent action related to climate change mitigation. The same approach needs to be taken for climate change adaptation to deliver a holistic response to the climate emergency.

**Waste and recycling leadership:** We were one of the first councils to introduce food waste into our green bin system, have been highly successful at reducing contamination and in partnership with small businesses, delivered the *Plastic Free Elsternwick Trial* that delivered lasting change. There is an opportunity to build on these successes and with our community, investigate how we can grow the circular economy for broader community benefit.

**Rekindling Indigenous culture and knowledge:** Engagement with the Traditional Owners on development of this Strategy has highlighted the opportunity to learn from and integrate Indigenous ecological knowledge and experience of dramatic environmental change into our land, water and biodiversity management practices. We can explore new ways to empower, include and support Aboriginal and Torres Strait Islander peoples in our climate emergency response through employment, procurement and partnership opportunities.

### INVEST NOW: STREET LIGHTING UPGRADES

**Between 2012 and 2020, a total of 6,600 street lights in Glen Eira were upgraded to energy-efficient compact fluorescents and LEDs halving street lighting energy use and reducing emissions by over 9,300 tonnes.**

The upgrade to more reliable technology also resulted in further savings on the Operation, Maintenance, Repair and Replacement (OMR) costs charged by the Distribution Network Service Providers. In total, Council saved \$1.43 million in energy costs and \$1.15 million from OMR bills, a combined saving of \$2.58 million between 2012 and 2020.

<sup>4</sup> [https://gca.org/wp-content/uploads/2019/09/GlobalCommission\\_Report\\_FINAL.pdf](https://gca.org/wp-content/uploads/2019/09/GlobalCommission_Report_FINAL.pdf)

## ROLES IN CLIMATE ACTION

Responding to climate change is a global challenge. Through the ways we live, work, play and govern, we all have a critical role.

### UPWARDS



Advocate to State and Federal Governments to adopt and resource a climate emergency response

### SIDEWAYS



Collaborate with and support other councils to implement a climate emergency response

### OUTWARDS



Work in partnership with the residents, businesses and Traditional Owners to initiate local community education, mobilisation and resilience building

### INWARDS



Ensure Councillors, Executive and Council staff understand and act on their roles in a climate emergency response

Adapted from Council and Community Action in the Climate Emergency: [www.caceonline.org](http://www.caceonline.org)

### THE DIFFERENCE BETWEEN 1.5 AND 2 DEGREES OF WARMING<sup>5</sup>

**In Australia, the likelihood of extreme weather events will increase from 57 per cent to 77 per cent. Heatwaves in the southern states will extend from five days in duration to an average of 11 days. The increased frequency of extreme rainfalls would double from an 11 per cent increase to 22 per cent.**

For us to limit warming to 1.5 degrees, emissions need to fall by 15 per cent a year every year, starting in 2020, until they hit net zero. The lockdowns throughout the world during the COVID-19 pandemic saw daily emissions temporarily fall by 17 per cent across the globe<sup>6</sup>. We know that it is possible, but we also know that it will take significant changes in the way we live and work. We can meet these targets if we act decisively, quickly and together.

### INTERNATIONAL

We need nationals around the world to commit to:

- reducing emissions as quickly as possible;
- working together to adapt and build climate resilience;
- supporting vulnerable populations;
- acknowledging and rewarding international leadership; and
- applying pressure to governments and other institutions who are not doing their bit.

In 2015, governments around the world, including Australia, became signatories to the international *Paris Agreement*. This Accord calls for limiting the global average temperature rise in this century to well below 2 degrees Celsius and attempting to limit the temperature rise to 1.5 degrees. There is broad agreement in the global scientific community that the limit of 1.5 degrees of warming must be vigorously pursued to avoid the most extreme and catastrophic impacts of climate change. The evidence is clear — the more warming that occurs, the more severe the consequences. Recent research by ClimateWorks Australia indicates emissions need to reach zero by 2035 to stay below a 1.5 degrees temperature rise<sup>7</sup>.



## FEDERAL GOVERNMENT

The Federal Government has the greatest opportunity, and power, to effectively tackle climate change, build a climate-proof economy and a safe future.

While Australia is a signatory to the *Paris Agreement*, the Federal Government has not set a target date to reach net zero emissions. Australia has agreed to an interim emissions reduction target of 26 to 28 per cent emission reduction by 2030, which does not align with the ambition required to meet the *Paris Agreement*.

Without strong and urgent action at the Federal level, reaching net zero community emissions will be near impossible. We need the Federal Government to declare a climate emergency and take action accordingly.

## STATE GOVERNMENT

In 2017, the Victorian Parliament passed a new *Climate Change Act 2017*, positioning Victoria as a leader in climate action. The Act sets out a clear policy framework and a pathway to a climate resilient community and a net zero emissions economy by 2050. In May 2021, interim emissions targets were announced of 28 to 33 per cent by 2025 and 45 to 50 per cent by 2030.

However, these targets are not consistent with achieving the goals of the *Paris Agreement*. There is an opportunity for the Victorian Government to take a leadership role to achieve net zero emissions sooner. They need to continue to invest heavily in climate action and make climate change a priority for all elements of government business - legislation, regulation, budgets, programs and services. Strong and ongoing action is essential if we are to achieve Council's goal of net zero community emissions by 2030.

## LOCAL GOVERNMENT

The remit and powers available to Victorian local governments are defined by the *Local Government Act 2020*, with recent changes introducing a new overarching governance principle of planning for climate change risk.

Despite limited powers, local governments are at the front line in dealing with climate change impacts and have been demonstrating leadership for many years. In Victoria, councils have made significant progress in reducing

their greenhouse gas emissions and supporting their communities to do the same. The services and infrastructure councils provide to the community are vulnerable to a range of climate hazards. Because of their local knowledge and close connection to the community, councils are well placed to help the local community and work with the State Government to reduce risks and adapt to climate change.

Across Victoria, councils have formed alliances, built partnerships and delivered shared projects to scale up action. We need to continue working with other councils on regional, State and national priorities. By working together, we can reduce duplication of effort and resources, play to our strengths, learn from each other and speak with a shared, stronger voice.

## BUSINESS AND INDUSTRY

Business and industry are responsible for 43 per cent of Glen Eira's carbon footprint (stationary energy, not accounting for transport and waste). We need business and industry to:

- support our transition to net zero carbon by focusing on their own operations and using their experience to influence their customers and supply chains;
- adapt their business models to encompass a circular economy;
- use their voice to advocate on climate issues to the Federal and State Governments; and
- to work with us to build local economic resilience to help our community withstand future climate related shocks.

While most local businesses recognise the need to respond to climate change, there are significant barriers to action, including a lack of time, money, resources or knowledge, and policy uncertainty at State and Federal levels. A six-month *Plastic Free Elsternwick Trial* eliminated more than 25,000 pieces of single-use plastic, demonstrating that small businesses can have a significant impact with a little extra support.

Large corporate businesses are increasingly following the lead of local governments in taking action on climate change, particularly in the face of Federal inaction. Some of Australia's largest businesses, like Woolworths and Bunnings have set ambitious 100 per cent renewable energy targets. Others are moving towards carbon neutral

or net zero emissions targets. Locally, Monash University is aiming for net zero emission campuses by 2030.

We have a role in celebrating these achievements and will proactively work with local businesses and representative organisation (eg. traders' associations) to reduce the impact of their operations and supply chains.

## HOUSEHOLDS

Households account for 35 per cent of Glen Eira's carbon emissions from energy. We need households to work with us to take the action that they can. Collectively we have the power to make a big and positive difference. Households can:

- switch to all-electric and zero carbon energy;
- buy less, recycle and re-use more to create low waste households;
- reduce energy use;
- improve homes to make them sustainable and climate-resilient;
- switch to more sustainable transport like walking, cycling, ride sharing and electric vehicles;
- support the natural environment by planting gardens;
- buy local and build resilience into our local economy;
- connect with, support and share information with networks — friends, neighbours, colleagues and family; and
- advocate for stronger climate change action by State and Federal Governments.

We will be developing a range of ways to support households and individuals to take all kinds of climate action.

## SCHOOLS, COMMUNITY ORGANISATIONS AND GROUPS

Schools, community organisations and groups are a critical part of our social fabric with deep networks and local connections. They have the power to be climate messengers, helping their communities to understand climate change, mobilise action and celebrate wins. Schools, community organisations and groups can also lead by example, reducing their own carbon footprint, working toward zero waste, saving water, encouraging active transport, growing food and planting trees.

Whether they are aware of it or not, local schools, groups and organisations are already playing a critical role in climate action. They bring people together. They help us get to know our neighbours, and other people with shared interests. They are the building blocks of our social networks and these networks are critical for our individual and collective resilience. Climate change is increasing extreme weather events and these local networks will help us look after each other in times of need. They also open up possibilities for the sharing economy, for collective projects and to stand together to advocate for stronger climate action by all levels of government.

We will work with schools, groups and organisations to amplify climate messages and connect their communities to local climate programs, including Glen Eira Emergency Climate Action Network, Jewish Climate Network, Love Our Street, Environment Victoria, Port Phillip Eco Centre.

<sup>5</sup> <https://www.bbc.com/news/science-environment-52724821>

<sup>6</sup> <https://www.climateworksaustralia.org/resource/decarbonisation-futures-solutions-actions-and-benchmarks-for-a-net-zero-emissions-australia/>

<sup>7</sup> <https://interactive.carbonbrief.org/impacts-climate-change-one-point-five-degrees-two-degrees/>

## OUR GOALS AND OBJECTIVES

**The urgency of the climate emergency requires all of us to do as much as we each can, as individuals, organisations, governments and communities to respond by rapidly reducing emissions and strengthening our resilience to the growing impacts. However, no matter how ambitious, committed or passionate we are, without a clear strategy, our staff, partners and our community don't know where we are heading, how we will get there or how we will stay on track. They can't join us.**

The goals and objectives presented below will allow us to prioritise, resource, communicate and evaluate our

response to the climate emergency. They work together to tackle climate change from all angles and to ensure that the overall impact is bigger than the sum of its parts.

The goals outline what we are aiming for, the ultimate end point. The objectives focus on our role to deliver concrete action that supports the goals to come to life. Delivering on the objectives and continually evaluating progress will keep us on track for achieving the larger end goals.

The goals and objectives have been defined for Council and for how Council will support our community across three categories of climate action:

	COUNCIL	COUNCIL SUPPORTING COMMUNITY
<b>SYSTEMIC:</b> The foundational work necessary for an efficient, effective mitigation and adaptation response within our operations and in partnership with all sections of our community	<b>GOAL 1</b> We embed climate change action in everything that we do	<b>GOAL 2</b> Our community is active and mobilised on climate action
<b>ADAPTATION:</b> Preparing for the economic, social and environmental shocks that are expected due to climate change	<b>GOAL 3</b> Council-owned buildings and infrastructure are resilient and safe for our staff and community	<b>GOAL 4</b> Our community is protected from the worst impacts of climate change
<b>MITIGATION:</b> Reducing the carbon emissions that are the root cause of climate change	<b>GOAL 5</b> Zero direct Council emissions by 2031	<b>GOAL 6</b> Net zero community emissions by 2030

4 <https://blogs.imf.org/2020/04/14/the-great-lockdown-worst-economic-downturn-since-the-great-depression/>

### SPRINGING FORWARD FROM THE PANDEMIC



**The impact of COVID 19 and the associated lockdowns has been significant and is likely to have both financial and social consequences for some time .**

In Australia the preventative response has (thus far) been strong and effective. There is often a perception in the broader community that governments are slow moving entities. While this can be true at times, the pandemic

has proven our ability to react expediently and decisively. We have been quick to adapt, ensuring we continue to deliver much needed community services and community consultation, even while in lockdown.


The pandemic is and will continue to change the way we do things. By using a climate change lens as we create the “new normal”, we can further embed climate change action into our operations.





## SYSTEMIC

Our systemic work sets the foundations necessary for an efficient, effective mitigation and adaptation response. This systemic work occurs within Council's operations and in partnership with all sections of our community - residents, businesses, schools and community groups. It maps our pathway to embed climate change and biodiversity action into existing ways of working and demonstrates the systems change that is necessary as part of the climate emergency response.

We have already commenced this work, including through the climate emergency declaration, effective advocacy to other levels of government such as data collection and joint advocacy to change the National Electricity Rules, and strengthening sustainability related community engagement and programs.

COUNCIL	
<b>GOAL 1</b> We embed climate change action in everything that we do	
<b>PRINCIPLE 5</b> 	
<p><b>OBJECTIVE 1.1:</b> All staff to embed climate action into their work</p> <p><b>OBJECTIVE 1.2:</b> Make climate change action a priority consideration in every strategy, plan and policy</p> <p><b>OBJECTIVE 1.3:</b> Leverage financial, administrative and reporting systems to drive climate action</p> <p><b>OBJECTIVE 1.4:</b> Advocate for stronger climate change action by other levels of government</p>	

COUNCIL SUPPORTING COMMUNITY	
<b>GOAL 2</b> Our community is active and mobilised on climate action	
<b>PRINCIPLE 1</b> 	<b>PRINCIPLE 2</b> 
<b>PRINCIPLE 3</b> 	<b>PRINCIPLE 4</b> 
<b>PRINCIPLE 5</b> 	
<p><b>OBJECTIVE 2.1:</b> Communicate and engage on the climate emergency directly, honestly and frequently through all channels and integrate with all council services (eg. health, economic development, leisure)</p> <p><b>OBJECTIVE 2.2:</b> Create opportunities for everyone in our community to act on climate change at home, at work, at school, and as a community</p>	

<b>INNOVATION AREA</b> <b>EXPLORE INDIGENOUS ECOLOGICAL KNOWLEDGE</b> 	<p>Much cultural knowledge has been lost but there are still imprints and memories that can be rekindled for the benefit of the whole community.</p>	<p>In partnership with the local Traditional Owners, we will explore how Boonwurrung knowledge of climate and climate change allow us to respond to the climate emergency.</p>	<p>We will ask what the impacts of the climate emergency will be on local First Nations people; their health and livelihoods, their connection to community, and their connection to Country.</p>
<b>INNOVATION AREA</b> <b>APPLY THE CLIMATE LENS</b> 	<p>Through our climate emergency declaration and emissions goals, we have demonstrated strong leadership.</p> <p>Our community has asked us to strengthen this leadership and invite everyone to participate.</p>	<p>We will make changes to our systems so that climate action is embedded into the way we work every day.</p> <p>We will tell the truth about climate change impacts and solutions, and work with our community to amplify messages.</p>	

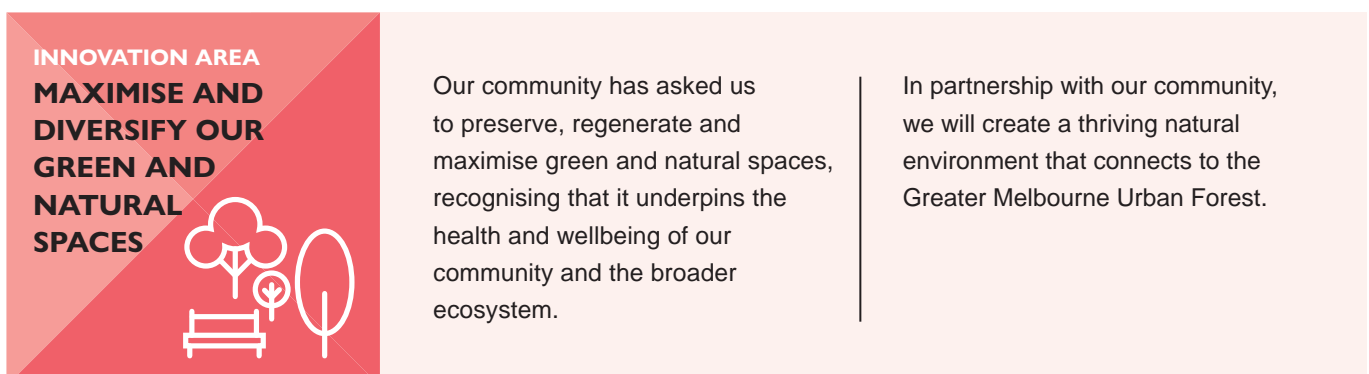
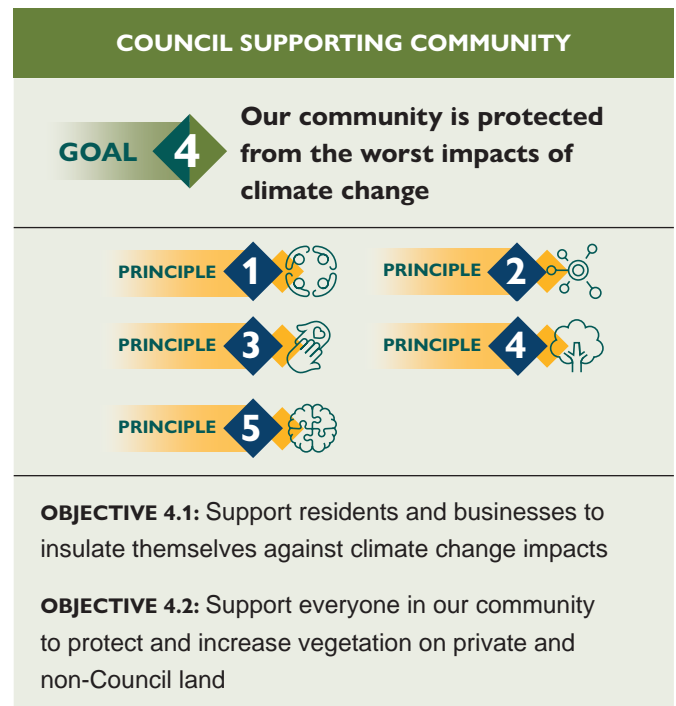
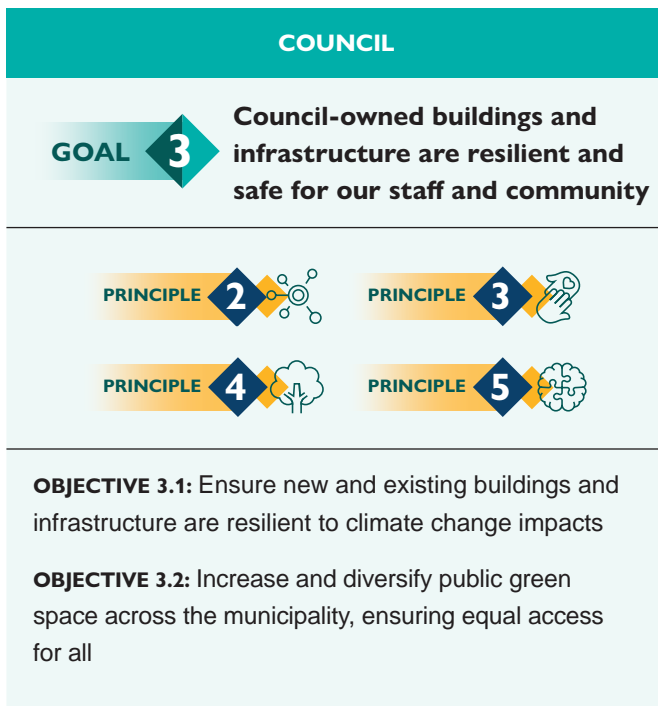
## ADAPTATION

We will continue to build local resilience and adaptive capacity, within our own operations but also across and with the broader community. For our own operations, this will focus on building natural capital (through investment in urban greening and biodiversity) and adapting our buildings, assets and infrastructure to ensure that they are future proofed against the growing environmental and financial impacts of climate change and are safe for all users.

An adapted and resilient community is actively prepared for the economic, social and environmental shocks that are expected due to climate change and can bounce back quickly. Having access to good information, strong networks, and a sense of agency are critical elements of a resilient community - all things that we can support within Glen Eira.

We have already started to adapt to our changing climate by investing in building upgrades, water efficiency, green space, increased vegetation and biodiversity. *Solar Savers* has been helping concession card holders future proof their homes from rising energy costs and increasing temperatures by providing easy access to rooftop solar. Citizen science programs like *Nature Next Door* and bi-annual garden tours build social networks and grow local resilience as do the strong community engagement and high-profile events that Glen Eira is known for.

Work towards these adaptation goals will be supported by the *Open Space Strategy*, *Asset Management Strategy*, *Integrated Transport Strategy*, *Biodiversity Implementation Plan*, the Glen Eira Planning Scheme, *Procurement Policy* and *Urban Forest Strategy* (currently under development).



MITIGATION

Glen Eira has two very clear, ambitious and science-based goals for mitigating emissions for corporate operations and the community. We will take the lead in this space, paving the way for strong mitigation action across Glen Eira.

We are currently responsible for 8,400 tonnes of carbon emissions per year. We have reduced emissions by 27 per cent over the last six years and are well on track to achieve zero direct emissions by 2031 with the implementation of this *Strategy*. Our buildings, assets and infrastructure will be efficient, fossil fuel free and powered by renewables. Consumption and waste will be minimised and recycling will be maximised. We will be investing in active and sustainable transport. We will be proactively managing our supply chain to ensure the best possible carbon outcomes.

COUNCIL BUILDINGS, ASSETS AND INFRASTRUCTURE

We own and operate a range of buildings, assets and infrastructure on behalf of the Glen Eira community. This includes parks, gardens and other reserves; roads and the bicycle network; town halls; leisure centres; libraries; childcare, maternal child and health centres; community halls; neighbourhood houses; pavilions and sporting facilities; depots; offices; and car parks.

We will ensure that all of these spaces are sustainable, resilient and climate safe for our staff, tenants and the community. They will be comfortable all-year-round, especially during heatwaves and other extreme weather events.

FIGURE 1: Glen Eira City Council’s Greenhouse Gas Emissions

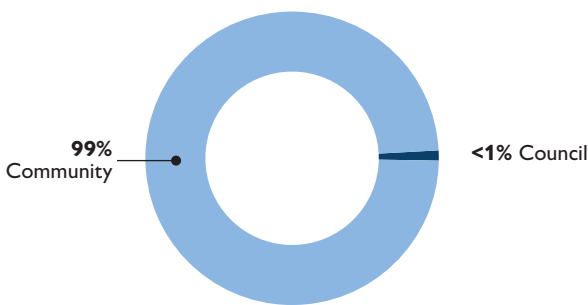
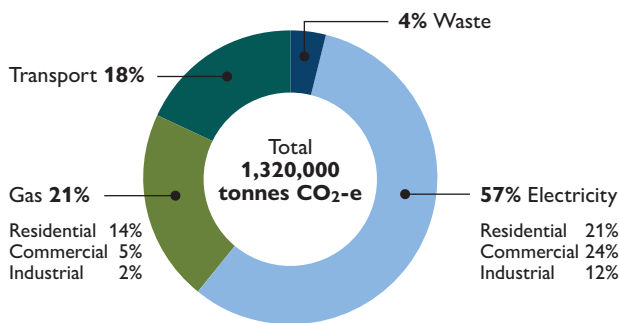


FIGURE 2: Glen Eira community greenhousegas emissions 2018-19



In a net zero municipality the Glen Eira community will have access to the information, products and services that they need to make their homes, businesses, schools and community organisations efficient, comfortable and powered by renewable energy. They will be able to travel efficiently and sustainably through a connected and active transport system. They will consume wisely and produce little to no waste within a circular economy.

Glen Eira's community is currently responsible for more than 1.3 million tonnes of carbon emissions per year (see figure 2). While we have very little direct control over emissions generated by the community, there are significant opportunities for us to lead action that will support the ultimate goal of net zero emissions by 2030.

We have already started this work, delivering a range of programs such as *Solar Savers* in partnership with Eastern Alliance for Greenhouse Action and community education like the sustainable living webinars delivered in 2020 which attracted more than 1,300 people.

Delivery of the mitigation goals will be supported by the *Integrated Transport Strategy*, the *Sustainable Buildings and Infrastructure Policy*, and *Planning Scheme* and our *Procurement Policy*.

COUNCIL	
GOAL 5	<b>Zero direct Council emissions by 2031</b>
PRINCIPLE 5	
<p><b>OBJECTIVE 5.1:</b> Ensure all Council buildings, assets and infrastructure are energy efficient, fossil fuel free and powered by 100 per cent renewable energy</p> <p><b>OBJECTIVE 5.2:</b> Use Council's purchasing power to stimulate the circular economy</p>	

COUNCIL SUPPORTING COMMUNITY	
GOAL 6	<b>Net zero community emissions by 2030</b>
PRINCIPLE 1	PRINCIPLE 5
<p><b>OBJECTIVE 6.1:</b> Empower our community to reduce their emissions at home, at work, at school, and as a community</p> <p><b>OBJECTIVE 6.2:</b> Support the community to choose zero or low emissions transport</p> <p><b>OBJECTIVE 6.3:</b> Make it easy for the community to participate in the circular economy</p>	

INNOVATION AREA SUPPORT A CIRCULAR ECONOMY			
	In partnership with our community, we have been at the forefront of waste minimisation and recycling in Victoria.	Building on this success, we will look beyond the pervasive take-make-waste extractive model and investigate ways to support a circular economy.	We will upskill our staff and our community so together, we can explore how to design out waste and instead, keep products and materials in use.



# OUR ACTION PLAN

The *Strategy* is supported by *Our Action Plan*, which sets out 70 actions to be undertaken over the life of the *Strategy* to achieve the identified goals and objectives.

The actions are deliberately broad, as they capture a wide range of specific actions, programs and projects Council will undertake over the four years. The actions will be translated each year into these specific actions, programs or projects and integrated into annual work plans right across Council to ensure climate change action is truly integrated into everything we do.

*Our Action Plan* is to be read in conjunction with the Monitoring and Evaluation section, which contains a set of key questions, indicators and targets for each goal.

*Our Action Plan* will be updated annually (if needed), to reflect changing needs and opportunities and respond to monitoring and evaluation findings

**GOAL 1**

**We embed climate change action in everything that we do**

**DELIVERS ON COMMUNITY PRINCIPLE:**

**PRINCIPLE 5**

ACTION	TIMELINE	LEAD COUNCIL TEAM AND SUPPORT	PARTNERS
<b>1.1 All staff to embed climate action into their work</b>			
1.1.1 Define and communicate the unique role each business unit can play in Council's climate emergency response	► 2021–22	<u>Transformation and Corporate Performance, Business unit managers</u> Climate and Sustainability, Customer and Communications	
1.1.2 Include climate change education into staff and councillor induction and training to support climate smart decision-making. Include information about local climate risks and tailored information for different business units	► 2021–22	<u>People and Culture</u> Climate and Sustainability	
1.1.3 Embed climate change into relevant position descriptions right across Council	► 2021–22	<u>Business unit managers</u> People and Culture, Transformation and Corporate Performance	
1.1.4 Include climate emergency key performance indicators into Chief Executive Officer, Director and other key leaders contracts	► 2022–23	<u>People and Culture</u> Climate and Sustainability	
<b>1.2 Make climate change action a priority consideration in every strategy, plan and policy</b>			
1.2.1 Update all plans, policies and strategies so they make a positive contribution to climate emergency action	► Ongoing	<u>Transformation and Corporate Performance</u> All business units	
1.2.2 Use a climate emergency as a lens to support the development and implementation of every new <i>Council Plan</i> , strategies and policies	► Ongoing	<u>Transformation and Corporate Performance</u> All business units	
1.2.3 Undertake a land-use conflict study to clarify community preferences for how Council-owned land is used to reduce emissions, support adaptation and maximise community benefit	► 2021–22 – 2022–23	<u>City Futures, Recreation and Open Space, Climate and Sustainability</u>	
<b>1.3 Leverage financial, administrative and reporting systems to drive climate action</b>			
1.3.1 Update <i>Procurement Policy</i> and weighting system to address climate change impacts from Council and contractors. Report on the impact as part of quarterly reporting	► 2021–22	<u>Procurement</u> Transformation and Corporate Performance	
1.3.2 Update Council's <i>Risk Management Framework and Policy</i> , and Operational Risk Register to ensure climate risks are appropriately assessed and managed	► 2021–22	<u>Corporate Counsel, Climate and Sustainability</u>	
1.3.3 Update project planning and reporting templates to ensure climate and sustainability impacts are reported, positive impacts strengthened, and negative impacts minimised	► 2021–22	<u>Project Management Office (PMO)</u>	
1.3.4 Update <i>Investment Policy</i> to increase financial investments with non-fossil fuel financial institutions.	► 2022–23	<u>Finance</u> Climate and Sustainability	
<b>1.4 Advocate for stronger climate change action by other levels of government</b>			
1.4.1 Develop a climate emergency position statement and advocacy priorities	► 2021–22	<u>Climate and Sustainability</u> Customer and Communications	Eastern Alliance for Greenhouse Action Climate Emergency Australia
1.4.2 Ensure the climate emergency is embedded into related areas of advocacy (eg. transport, social and affordable housing)	► Ongoing	<u>Climate and Sustainability</u> City Futures, Community Planning and Engagement, PMO	Eastern Alliance for Greenhouse Action Climate Emergency Australia
1.4.3 Collect data to help build the evidence base for advocacy campaigns	► Ongoing	<u>Climate and Sustainability</u>	Eastern Alliance for Greenhouse Action Climate Emergency Australia

## GOAL

2

**Our community is active and mobilised on climate action**

**DELIVERS ON COMMUNITY PRINCIPLE:**

PRINCIPLE

1



PRINCIPLE

2



PRINCIPLE

3



PRINCIPLE

4



PRINCIPLE

5



ACTION	TIMELINE	LEAD COUNCIL TEAM AND SUPPORT	PARTNERS
<b>2.1 Communicate and engage on the climate emergency directly, honestly and frequently through all channels and integrate with all council services (eg. health, economic development, leisure)</b>			
2.1.1 Develop a Glen Eira climate change story and key messages to support the distribution of accessible information	► 2021–22	<u>Climate and Sustainability, Customer and Communications</u> Senior Leadership Group	Residents, businesses, schools, community groups Boon Wurrung Foundation
2.1.2 Creatively use the full range of Council assets, including physical space, to connect with new audiences, engage and educate about climate change impacts, risks and how people can protect themselves	► Ongoing	<u>Climate and Sustainability, Buildings and Properties</u>	
2.1.3 Incorporate climate change messages and education into related subject areas (e.g. public health, transport, youth)	► Ongoing	<u>Climate and Sustainability, Customer and Communications</u> All areas that have touchpoints with community	
2.1.4 Review and update the Council's website to ensure climate change messaging appears throughout	► 2021–22	<u>Transformation and Corporate Performance</u> Climate and Sustainability	
<b>2.2 Create opportunities for everyone in our community to act on climate change at home, at work, at school, and as a community</b>			
2.2.1 Create opportunities for rekindling and sharing of Traditional Owner knowledge to incorporate into Glen Eira's climate emergency response	► Ongoing	<u>Community Development and Care, Climate and Sustainability</u>	Boonwurrung Foundation Councils on the land of Boonwurrung people
2.2.2 Support our community to raise their voice and mobilise in support of climate action	► Ongoing	<u>Climate and Sustainability</u> Work across council teams with existing relationships with community	Residents, businesses, schools, community groups
2.2.3 Make it easy for residents, businesses and organisations to access climate change related rebates, incentives and programs delivered by other levels of government	► Ongoing	<u>Climate and Sustainability</u>	Residents, businesses, schools, community groups
2.2.4 Work with the community to build local capacity to respond to the climate emergency	► Ongoing	<u>Climate and Sustainability, Community Planning and Engagement, Family, Youth and Children's Services, City Futures</u>	Residents, businesses, schools, community groups
2.2.5 Expand community grants program to support local groups to implement sustainability projects in Glen Eira	► Ongoing	<u>Community Planning and Engagement, City Futures</u> Climate and Sustainability	
2.2.6 In partnership with other local governments and partners, advocate to State and Federal Government for them to rapidly remove barriers to action, and support our community to adapt to climate change	► Ongoing	<u>Climate and Sustainability</u>	Eastern Alliance for Greenhouse Action Climate Emergency Australia
2.2.7 Include requirements to reduce environmental impact into leases of Council property	► 2022–23 onwards	<u>Buildings and Properties</u> Recreation and Open Space, Climate and Sustainability	Council tenants
2.2.8 Expand community and business award programs to include recognition of climate action by residents and local business	► 2022–23	<u>Community Development and Engagement</u> City Futures	

## GOAL

3

**Council-owned buildings and infrastructure are resilient and safe for our staff and community**

**DELIVERS ON COMMUNITY PRINCIPLE:**

## PRINCIPLE

2



## PRINCIPLE

3



## PRINCIPLE

4



## PRINCIPLE

5



ACTION	TIMELINE	LEAD COUNCIL TEAM AND SUPPORT	PARTNERS
<b>3.1 Ensure new and existing buildings and infrastructure are resilient to climate change impacts</b>			
<b>3.1.1</b> Implement <i>Sustainable Building and Infrastructure Policy</i> . Measure and report on improvements and operational savings	► Ongoing	<u>Climate and Sustainability, Buildings and Properties, PMO, Projects and Infrastructure, City Futures</u> All business unit managers	Eastern Alliance for Greenhouse Action
<b>3.1.2</b> Identify critical Council buildings and infrastructure and conduct a climate change risk assessment on each	► Ongoing	<u>Climate and Sustainability Buildings and Properties</u>	Eastern Alliance for Greenhouse Action and other councils
<b>3.1.3</b> Drawing on climate change risk assessment findings, prioritise and implement upgrades through Council's <i>Asset Management Plans</i>	► 2024–25	<u>Climate and Sustainability, Buildings and Properties</u>	Eastern Alliance for Greenhouse Action and other councils
<b>3.1.4</b> Develop an <i>Integrated Water Management Plan</i> to understand and manage the cultural, environmental, social and economic importance of Glen Eira's water in the landscape	► 2021–22 2025–26	<u>Climate and Sustainability Projects and Infrastructure, Recreation and Open Space, Parks Services</u>	Elster Creek Catchment Collaboration (Melbourne Water, City of Kingston, City of Port Phillip, Bayside City Council) Boon Wurrung Foundation
<b>3.2 Increase and diversify public green space across the municipality, ensuring equal access for all</b>			
<b>3.2.1</b> Implement the <i>Urban Forest Strategy</i> to maximise greening on public land, to help cool the City, increase biodiversity, enhance carbon drawdown potential and ensure locals reap the health and wellbeing benefits of nature	► Ongoing	<u>Recreation and Open Space Parks Services, Climate and Sustainability</u>	
<b>3.2.2</b> Develop and implement a <i>Biodiversity Plan</i> to understand the impact the climate emergency will have on local flora and fauna, and identify actions to help the local ecosystem flourish and connect people to nature	► 2022–23	<u>Climate and Sustainability, Recreation and Open Space Parks Services</u>	
<b>3.2.3</b> Explore and trial opportunities to reclaim space to diversify and increase vegetation in areas of highest need	► Ongoing	<u>Recreation and Open Space, Climate and Sustainability Parks Services</u>	
<b>3.2.4</b> Update the Classified Tree Register to include ecosystem services and deliver a campaign to increase submissions to the Register	► 2022–23	<u>Parks Services</u> Customer and Communications	



## GOAL

4

**Our community is protected from the worst impacts of climate change**

**DELIVERS ON  
COMMUNITY  
PRINCIPLE:**

## PRINCIPLE

1



## PRINCIPLE

2



## PRINCIPLE

3



## PRINCIPLE

4



## PRINCIPLE

5



ACTION	TIMELINE	LEAD COUNCIL TEAM AND SUPPORT	PARTNERS
<b>4.1 Support residents and businesses to insulate themselves against climate change impacts</b>			
<b>4.1.1</b> Understand the local population segments who are particularly exposed to climate change risks, their needs and barriers to action	► 2021–22	<u>Community Development and Care</u> <u>Climate and Sustainability</u>	Residents, businesses, schools, community groups
<b>4.1.2</b> Invest in services and partnerships to support the most vulnerable community members who have significant barriers to protecting themselves from climate change impacts	► From 2022–23 onwards	<u>Community Development and Care</u> <u>Climate and Sustainability</u>	Health services, charity organisations, universities, real estate agents
<b>4.1.3</b> Engage and educate residents and business owners about how they can best adapt to and protect themselves and their community against climate impacts	► Ongoing	<u>Community Development and Care</u> , <u>City Futures</u>	Residents, businesses, schools, community groups
<b>4.1.4</b> Work with partners to improve the resilience of and access to local emergency relief centres to ensure they are available to community members in times of need	► 2021–22 — 2022–23	<u>Community Development and Care</u>	Eastern Alliance for Greenhouse Action
<b>4.1.5</b> Continue to work with partners to implement the Elster Creek Catchment Flood Management Plan	► Ongoing until 2024 (current duration of Plan)	<u>Climate and Sustainability</u> <u>Projects and Infrastructure</u> , <u>City Futures</u>	Melbourne Water, City of Kingston, City of Port Phillip, Bayside City Council
<b>4.2 Support everyone in our community to protect and increase vegetation on private and non-Council land</b>			
<b>4.2.1</b> Through implementation of the <i>Urban Forest Strategy</i> , ensure that Planning Policy helps protect established trees and significant vegetation, and encourages additional planting on private property	► 2021–22	<u>City Futures</u> <u>Urban Planning</u>	Residents, businesses, schools, community groups
<b>4.2.2</b> Continue to deliver and expand on existing gardening and citizen science programs	► Ongoing	<u>Climate and Sustainability</u>	Traditional Owners, residents, businesses, schools, community groups
<b>4.2.3</b> Develop a partnership program that expands and supports plantings on private and other non-Council land in identified hotspots and areas with limited natural landscapes	► Ongoing	<u>Climate and Sustainability</u> , <u>Parks Services</u> <u>Recreation and Open Space</u>	Residents, businesses, schools, community groups



## Zero direct Council emissions by 2031

## DELIVERS ON COMMUNITY PRINCIPLE:



ACTION	TIMELINE	LEAD COUNCIL TEAM AND SUPPORT	PARTNERS
<b>5.1 Ensure all Council buildings, assets and infrastructure are energy efficient, fossil fuel free and powered by 100% renewable energy</b>			
<b>5.1.1</b> Implement the <i>Sustainable Building and Infrastructure Policy</i>	► Ongoing	<u>Buildings and Properties, Climate and Sustainability, Projects and Infrastructure, City Futures</u> All business units	Eastern Alliance for Greenhouse Action
<b>5.1.2</b> Continue to roll-out energy efficiency measures across all Council buildings, prioritising higher emissions buildings	► Ongoing	<u>Buildings and Properties</u> Climate and Sustainability	Eastern Alliance for Greenhouse Action
<b>5.1.3</b> Continue to install solar on Council buildings and infrastructure	► Ongoing	<u>Buildings and Properties</u>	Eastern Alliance for Greenhouse Action
<b>5.1.4</b> Switch to all-electric systems across all council buildings through upgrades associated with the set maintenance schedules. Prioritise high consuming buildings where possible	► Ongoing	<u>Buildings and Properties</u> Climate and Sustainability, Glen Eira Leisure, PMO	Eastern Alliance for Greenhouse Action
<b>5.1.5</b> Continue to improve the efficiency of all public lighting through upgrades and smart-dimming	► Ongoing	<u>Climate and Sustainability</u> Recreation and Open Space, Projects and Infrastructure	Department of Transport, Eastern Alliance for Greenhouse Action
<b>5.1.6</b> Develop a sustainable transport policy that will, over time, deliver a zero emissions fleet and encourage staff to walk, cycle and use public transport	► Ongoing	<u>Finance, Procurement,</u> <u>Buildings and Properties</u> Climate and Sustainability	Eastern Alliance for Greenhouse Action and other councils
<b>5.1.7</b> Obtain carbon neutral certification for Council, including managing the emissions impacts of our contractors and supply chain	► 2024–25	<u>Climate and Sustainability</u>	Climate Active
<b>5.1.8</b> Provide Environmentally Sustainable Design training for teams involved in council building and infrastructure projects	► 2021–22	<u>Climate and Sustainability</u>	Eastern Alliance for Greenhouse Action
<b>5.1.9</b> Continue to participate in the Victorian Energy Collaboration (VECO) to source 100% renewable energy, including as Lead Organisation for 2021-23	► Ongoing	<u>Climate and Sustainability,</u> <u>Procurement</u>	Other councils participating in the VECO
<b>5.2 Use Council's purchasing power to stimulate the circular economy</b>			
<b>5.2.1</b> Conduct a waste audit in Council buildings to inform the development of the <i>Circular Economy Plan</i>	► 2021–22, 2024–25	<u>Climate and Sustainability</u> <u>Buildings and Properties</u>	Relevant contractors
<b>5.2.2</b> Develop an ambitious <i>Circular Economy Plan</i> that supports the community to participate in the new economy and delivers a clear pathway for Council to demonstrate leadership	► 2021–22	<u>Climate and Sustainability</u>	Metropolitan Waste and Resource Recovery Group Department of Environment, Water, Land and Planning Sustainability Victoria Other councils Residents, businesses, schools, community groups
<b>5.2.3</b> Train staff in the circular economy, with an initial focus on procurement, city economy and sustainability staff	► 2021–22	<u>Climate and Sustainability,</u> <u>Procurement</u>	Sustainability Victoria Metropolitan Waste and Resource Recovery Group
<b>5.2.4</b> Phase out single use plastics in Council operations and users of Council land (e.g. sports clubs, community groups)	► Ongoing	<u>Climate and Sustainability</u> Libraries, Arts and Culture Buildings and Properties Recreation and Open Space	

**GOAL 6**
**Net zero community emissions by 2030**
**DELIVERS ON  
COMMUNITY  
PRINCIPLE:**
**PRINCIPLE 1**
**PRINCIPLE 5**

ACTION	TIMELINE	LEAD COUNCIL TEAM AND SUPPORT	PARTNERS
<b>6.1 Empower our community to reduce their emissions at home, at work, at school, and as a community</b>			
<b>6.1.1</b> Create and promote a net zero, fossil fuel free pathway for each segment of our community, connect to programs and incentives offered by other levels of government	► 2021–22 – 2022–23	<u>Climate and Sustainability</u> All other business units	Residents, businesses, schools, community groups
<b>6.1.2</b> Focus Council's direct investment in delivering programs and services for community sectors with the least financial capacity to reduce emissions independently (eg. social housing, low-income households and small businesses)	► Ongoing	<u>Climate and Sustainability</u>	Department of Health and Human Services, social housing providers
<b>6.1.3</b> Incorporate Environmentally Sustainable Design policy into the <i>Glen Eira Planning Scheme</i> to mandate more sustainable and climate adapted new buildings	► 2021–22	<u>City Futures</u> Climate and Sustainability	The Council Alliance for a Sustainable Built Environment, Victorian Government
<b>6.1.4</b> Strengthen Environmentally Sustainable Design requirements in the <i>Glen Eira Planning Scheme</i> through participating in the Elevating ESD Targets Planning Scheme Amendment	► 2021–22 – 2022–23	<u>City Futures</u> Climate and Sustainability	Council Alliance for a Sustainable Built Environment, Victorian Government and other councils
<b>6.1.5</b> Investigate opportunities to encourage and incentivise the development of zero emissions buildings	► Ongoing	<u>Urban Planning</u> Climate and Sustainability	The Council Alliance for a Sustainable Built Environment
<b>6.2 Support the community to choose zero or low emissions transport</b>			
<b>6.2.1</b> Implement the Integrated Transport Strategy to prioritise walking, cycling and public transport trips, and support the uptake of electric vehicles	► Ongoing	<u>City Futures</u> Climate and Sustainability, Community Safety and Compliance	Department of Transport, Glen Eira Bicycle Users Group
<b>6.2.2</b> Through education, planning mechanisms, bulk buys and preferential parking, encourage the uptake of electric vehicles and bikes	► From 2023–24 onwards	<u>City Futures</u> Climate and Sustainability, Urban Planning	
<b>6.2.3</b> Through implementation of the Integrated Transport Strategy, install public charging stations in appropriate off-street locations such as Council-owned multi-deck car parks or at key Council facilities	► From 2023–24 onwards	<u>City Futures</u>	
<b>6.2.4</b> Through implementation of the Integrated Transport Strategy, rapidly increase the quantity and quality of walking and cycling paths along major transport routes	► Ongoing	<u>City Futures</u>	

ACTION	TIMELINE	LEAD COUNCIL TEAM AND SUPPORT	PARTNERS
<b>6.3 Make it easy for the community to participate in the circular economy</b>			
<b>6.3.1</b> Rollout the lessons from the <i>Plastic Free Elsternwick Trial</i> to help more businesses go plastic free	► 2021–22, 2023–24, 2025–26	<u>Climate and Sustainability</u> City Futures	Traders associations
<b>6.3.2</b> Engage and support the community to reuse, repurpose and share through initiatives such as repair cafes, tool libraries, training on the use of sharing and second-hand platforms	► Ongoing	<u>Climate and Sustainability</u>	Residents, community groups
<b>6.3.3</b> Develop a public campaign that promotes local businesses participating in the circular economy	► From 2022–23	<u>City Futures</u> Climate and Sustainability	Businesses, traders associations
<b>6.3.4</b> Develop a precinct based circular economy pilot to test potential for local and regional resource sharing, reuse and innovation between businesses. Seek to expand based on initial results	► 2021–22 – ► 2022–23	<u>Climate and Sustainability</u> City Futures	Businesses, traders associations
<b>6.3.5</b> Support local businesses to access circular economy grants and incentives from other levels of government	► Ongoing	<u>City Futures</u> Climate and Sustainability	Sustainability Victoria, Metropolitan Waste and Resource Recovery Group
<b>6.3.6</b> Support the rollout of the State-led container deposit scheme	► 2022–23 – 2023–24	<u>Climate and Sustainability</u> City Futures	Metropolitan Waste and Resource Recovery Group





**Monitoring, evaluating and reporting against the implementation of this Strategy is critical in order to:**

- track and share Glen Eira's achievements and progress with the community and more broadly with other councils;
- document and share the key lessons from implementation (and build them into future planning); and
- provide accountability for Council resources and support decision-making.

Council resources are finite, there are many elements of responding to the climate emergency which are difficult to measure and report on, and some that are far beyond the scope or role of local government to do so. In designing this framework, Glen Eira aims to strike a balance between ensuring transparency, accountability and learning throughout implementation of this *Strategy* and focusing resources on delivery.

For each goal a set of key questions, indicators and targets have been identified and included in the *Action Plan* that will help Glen Eira stay on track and will ensure Council is continually asking the right questions to provide a deeper understanding of what activity or action is making a real difference in Glen Eira. A combination of quantitative and qualitative data will be collected and reported throughout the implementation of this *Strategy*.

Wherever possible, the evaluation will draw on data available from reliable sources such as State and Federal Governments, peak bodies, universities and other research institutions. Glen Eira will also draw on existing Council data and will establish some new measurement and monitoring systems to capture information necessary to fill any gaps.

Our annual *Climate Emergency Response Strategy Report* will track and share progress with the Glen Eira community and partners.



## MONITORING AND EVALUATION

### GOAL

**1**

**We embed climate change action in everything that we do**

#### KEY QUESTIONS, INDICATORS AND TARGETS

#### DATA SOURCE(S)

**How has climate change action been embedded and integrated across Council operations?**

Provide an annual progress report on how climate change has been integrated into corporate processes, financial decision-making and Council planning and reporting.

Annual reflection and narrative evaluation of progress

**Do staff understand and how to embed climate change action in their work?**

The CEO and Directors KPIs include climate change action — these are published and reported annually.

100 per cent of relevant staff roles and responsibilities (position descriptions) KPIs and performance plans reference climate change action by 2023.

All staff are aware of local climate change impacts and action Council is taking.

CEO and Directors Performance Plans  
Audit of HR documentation in 2023  
Self-reported via annual staff survey

**How has Council advocated to the State and Federal Governments for stronger climate action?**

Provide an annual progress report detailing Council's advocacy action and outcomes.

Annual reflection and narrative evaluation of advocacy action and impact

## MONITORING AND EVALUATION

### GOAL

**2**

**Our community is active and mobilised on climate action**

#### KEY QUESTIONS, INDICATORS AND TARGETS

#### DATA SOURCE(S)

**How has Council supported the community to work together on climate action?**

Provide an annual progress report on key activity undertaken eg. communication touch points, events, online engagement, traditional media, social media etc.

Annual reflection and narrative evaluation of key activity

**How effectively has the community been engaged on climate action they can take, at home, at work, at school or in the broader community?**

Develop a method to understand how Council can best measure the depth and diversity of engagement with climate change campaigns and messages by December 2021.

Set a baseline and update the targets by March 2022.

Measure and report annually on:

- Proportion and representation of the Glen Eira community reached with climate change messaging (i.e., what proportion of our community understands the threat of climate change, what Council is doing and how they can take action)

Supporting indicators

- # households participating in Council programs
- # businesses participating in Council programs
- # community organisations/groups participating in council programs

Requires a new method to provide meaningful data  
External market research in 2023  
Council records (eg. program evaluation and event attendance)

## MONITORING AND EVALUATION

### GOAL 3

**Council-owned buildings and infrastructure are resilient and safe for our staff and community**

#### KEY QUESTIONS, INDICATORS AND TARGETS

**What improvements and operational savings have been made through implementation of the Environmentally Sustainable Design (ESD) Policy?**

Provide an annual progress report on key changes and outcomes.

Supporting indicators

- # buildings that have been assessed and improved
- # of trees planted each year.
- % of tree canopy cover across Glen Eira
- Increase in the municipality's stormwater storage capacity
- New permeable surfaces created in the municipality

#### DATA SOURCE(S)

Annual reflection and narrative evaluation of key changes made and outcomes to date

Council records

## MONITORING AND EVALUATION

### GOAL 4

**Our community is protected from the worst impacts of climate change**

#### KEY QUESTIONS, INDICATORS AND TARGETS

**How has the community been supported to ensure they are protected from the worst impacts of climate change? Including vulnerable people, businesses, homeowners and renters.**

Provide an annual progress report on key programs and outcomes.

Supporting indicators

- # vulnerable people supported
- # general households supported
- # businesses and community organisations supported

Council records (eg. program evaluation and event attendance)

**What planning scheme changes have been made and are they making a difference?**

Provide an annual progress report on key changes and outcomes.

Annual reflection and narrative evaluation of key changes made and outcomes to date

**How has the community been supported to protect and increase vegetation on private and non-Council land?**

Provide an annual progress report on key activities and outcomes.

Supporting indicators

- % increase in tree canopy cover
- % increase in vegetation

Annual reflection and narrative evaluation of key activities and outcomes to date

Department of Environment, Land, Water and Planning Vegetation Mapping Tools



## MONITORING AND EVALUATION

### GOAL 5

#### Zero direct Council emissions by 2031

KEY QUESTIONS, INDICATORS AND TARGETS	DATA SOURCE(S)
<p><b>What has Council achieved in terms of reducing its own carbon emissions?</b></p> <p>Glen Eira achieves Climate Active Certification in 2025.</p> <p>Supporting Indicators</p> <ul style="list-style-type: none"> <li>• 100% of energy purchased is renewable</li> <li>• 130kW solar PV installed on Council buildings</li> <li>• 100% of Council buildings gas free</li> <li>• 100% of passenger vehicles are EVs</li> <li>• Minimum 46% Waste diverted from landfill</li> <li>• # Carbon Tonnes Offset to get to zero</li> </ul>	<p>Corporate Emissions Profile completed in 2025</p> <p>Council records</p>
<p><b>How has Council leveraged their purchasing power to stimulate the circular economy?</b></p> <p>Provide an annual progress report key activities and outcomes.</p>	<p>Annual reflection and narrative evaluation of key activities undertaken and outcomes to date</p>

## MONITORING AND EVALUATION

### GOAL 6

#### Net zero community emissions by 2030

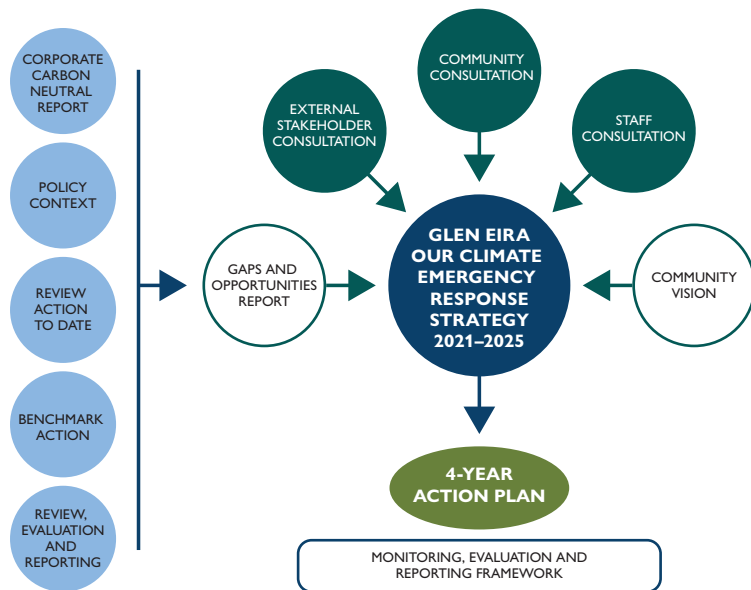
KEY QUESTIONS, INDICATORS AND TARGETS	DATA SOURCE(S)
<p><b>How has Council supported the community to reduce their carbon emissions?</b></p> <p>Provide an annual progress report on key activities and outcomes.</p> <p>Council will report on outcomes from the direct programs they deliver and support. This will be accompanied by the community emissions inventory updated annually by Ironbark Sustainability and Beyond Zero Emissions.</p> <p>While achieving net zero community emissions by 2030 is largely reliant on State and Federal Government action, the community emissions inventory will provide an important indication of progress.</p> <p>Supporting Indicators</p> <ul style="list-style-type: none"> <li>• Emissions reductions attributable to Council programs</li> <li>• kW/MW Solar Installed</li> <li>• % mode shift</li> <li>• % EVs in municipality</li> <li>• % Waste to Landfill per resident</li> <li>• % residents / businesses participating in circular economy (via Council Programs)</li> </ul>	<p>Annual reflection and narrative evaluation of key activities undertaken and outcomes to date</p> <p>Community Emissions Inventory - Ironbark Sustainability and BZE Snapshot Council Program Evaluations</p> <p>Council Program Evaluations</p> <p>Clean Energy Regulator</p> <p>Victorian Energy Upgrades Data Dashboard</p> <p>Sustainability Victoria Waste Data Portal</p>





## HOW THIS STRATEGY WAS DEVELOPED

This *Strategy* has been informed by expert analysis, community and key stakeholder feedback, as well as a review of council best practice locally and across Australia.



### STAGE 1: COMMUNITY AND STAKEHOLDER CONSULTATION

**The first stage of community and stakeholder consultation took place from 26 October to 22 November 2020. The purpose of this engagement was to gather initial feedback and ideas from the community on goals and objectives for the Strategy. Due to the Victorian Government COVID-19 restrictions, the consultation was conducted via online methods as no in-person activities were permitted.**

Our 'Have Your Say' online engagement platform was the primary mechanism used to gather input and promote the other engagement options. The main engagement activities included:

- Online survey
- Online ideas forum
- Virtual movie screening and Q&A
- Online workshops x 3
- Presentations at online business events x 2
- School video competition
- Printed short survey in *Glen Eira News* (November edition)
- Large signs in busy parks
- Distribution of short survey postcards to Council's four libraries (Bentleigh East, Caulfield, Carnegie, Elsternwick) and service centre (Glen Eira Town Hall)
- External stakeholder interviews with Eastern Alliance for Greenhouse Action, Melbourne Water, Metropolitan Waste and Resource Recovery Group and Sustainability Victoria

### STAGE 2: COMMUNITY AND STAKEHOLDER CONSULTATION

**The second stage of community and stakeholder consultation took place from 7 April to 9 May 2021. The purpose of this engagement was to gain feedback and input into the draft Strategy. Consultation activities were conducted both online and in-person.**

Our 'Have Your Say' online engagement platform was again the primary mechanism used to gather input and promote the other engagement options. The main engagement activities included:

- Online survey
- Two workshops (online for community, one in-person with young people)
- Six pop-ups in busy locations across the municipality
- Article in *Glen Eira News* (April edition)
- Articles in a variety of Council e-newsletters
- Large signs in five busy parks
- Extensive social media campaign on Facebook and Instagram
- Promotion at the Botanica Festival at Rippon Lea Estate
- Emails to local community groups and organisations, schools, neighbourhood houses, Monash University, and others.
- Telephone survey of representative sample of 500 Glen Eira residents
- Cultural review by Boonwurrung Elder, N'Arweet Dr Carolyn Briggs AM

**A special thanks to the Sustainability Advisory Committee, who have provided feedback and advice into the Strategy throughout the process.**

**Adaptation:** Imagine you're on a ship that's sinking because of a leak. If you want to stay afloat, you've got to act. You grab a bucket and pour water out as it gushes through the hole. This response is adaptation — addressing the effect (the water in the boat), but not the cause of the problem (the hole). The Intergovernmental Panel on Climate Change (IPCC) defines adaptation as *“the process of adjustment to actual or expected climate and its effects.”* It's doing what we can to live with and minimise the destruction and suffering from climate change.

**Carbon emissions:** Greenhouse gas emissions released by the process of consuming fossil fuels and the production of materials.

**Carbon neutrality:** Carbon neutrality is achieved when the net greenhouse gas emissions associated with an organisation's activities, products, services and events are equal to zero.

**Circular economy:** A system in which all resources are highly valued and remain in the system through re-use, re-purposing and recycling.

**Citizen science:** The practice of public participation and collaboration in scientific research to increase scientific knowledge.

**Climate change:** Climate change refers to a change in the state of the climate that can be identified (eg. by using statistical tests) by changes in the mean and/or the variability of its properties and that persists for an extended period, typically decades or longer.

**Climate change adaptation:** See Adaptation

**Climate change mitigation:** See Mitigation

**Climate emergency:** The catastrophic changes to the climate brought about by human activity that poses a dangerous threat to all life on the planet.

**Drawdown:** The removal of excess greenhouse gases from the atmosphere with the aim of restoring a safe climate.

**Emissions:** Shorthand for carbon emissions (see entry on carbon emissions).

**Emissions reduction:** Also known as mitigation (see glossary entry on mitigation below).

**Fossil fuels:** Any of a class of hydrocarbon-containing materials of biological origin occurring within Earth's crust that can be used as a source of energy (i.e. coal and oil).

**Greenhouse gases (GHGs):** There are six GHGs which are considered to be key contributors to global warming. These are Carbon dioxide (CO<sub>2</sub>), Methane (CH<sub>4</sub>), Nitrous oxide (N<sub>2</sub>O), Hydrofluorocarbons (HFCs), Perfluorocarbons (PFCs), and Sulphur hexafluoride (SF<sub>6</sub>). Carbon dioxide is considered the most significant GHG due to its increasing prevalence within the atmosphere.

**(Climate change) Impacts:** These are the subsequent consequences, or effects on natural and human systems from climate change.

**Mitigation (emissions reduction):** Imagine you're on a ship that's sinking because of a leak. Sealing the leak to stop more water coming in is mitigation. In other words, it's addressing the root cause of the problem rather than dealing with its effects.

The IPCC describes mitigation as *“human intervention to reduce the sources or enhance the sinks of greenhouse gases”*.

**Net zero emissions:** Also referred to as 'zero carbon' is the process of achieving an overall balance between greenhouse gas emissions produced and greenhouse gas emissions taken out of the atmosphere.

**Net zero pathway:** A process that an organisation will take to reduce and offset its carbon emissions in order to reach 'net zero emissions' or 'carbon neutrality'. A net zero pathway will often be unique to each organisation and is determined by rigorous assessment of an organisation's operating context.

**Renewable energy:** (also called 'clean energy') comes from natural sources or processes that are constantly replenished such as solar, wind and water (hydro).

**Resilience:** the capacity of individuals, institutions, businesses, communities and systems to adapt, survive and thrive no matter what kind of chronic stresses and acute shocks they experience.

**Safe climate:** Refers to the enjoyment of a safe, clean healthy and sustainable environment accessible by all global citizens.

**Sharing economy:** a peer-to-peer based mechanism for acquiring, providing, or sharing access to goods and services. Examples include toy libraries, online buy-swap-sell platforms and community gardens.

**Stationary energy:** the energy we use to power our buildings and infrastructure — electricity, mains gas and LPG bottled gas.

**(Climate) Vulnerability:** Propensity or predisposition to be adversely affected. Vulnerability encompasses a variety of concepts and elements including sensitivity or susceptibility to harm and lack of capacity to cope and adapt.

**Zero net emissions:** Also referred to as 'zero carbon' is the process of achieving an overall balance between greenhouse gas emissions produced and greenhouse gas emissions taken out of the atmosphere





GLEN EIRA  
CITY COUNCIL

## Glen Eira City Council

Corner Glen Eira and Hawthorn Roads, Caulfield

Mail address: PO Box 42

Caulfield South, 3162

Phone: (03) 9524 3333

Fax: (03) 9523 0339

[mail@gleneira.vic.gov.au](mailto:mail@gleneira.vic.gov.au)

[www.gleneira.vic.gov.au](http://www.gleneira.vic.gov.au)

### National Relay Service

If you are deaf, hearing-impaired, or speech-impaired, we ask that you call us via the National Relay Service and then ask for (03) 9524 3333.

Online: <https://internet-relay.nrscall.gov.au>

Teletypewriter (TTY): 13 36 77

Speak and Listen: 1300 555 727

### Social media

#### Glen Eira City Council:

[www.facebook.com/GlenEiraCityCouncil](http://www.facebook.com/GlenEiraCityCouncil)

#### @cityofgleneira:

[www.instagram.com/cityofgleneira](http://www.instagram.com/cityofgleneira)

#### Glen Eira arts, gallery and events:

[www.facebook.com/gleneiraarts](http://www.facebook.com/gleneiraarts)

#### Glen Eira Leisure:

[www.facebook.com/GESACOnline](http://www.facebook.com/GESACOnline)

<https://www.instagram.com/gleneiraleisure>

[www.twitter.com/GESACOnline](https://www.twitter.com/GESACOnline)

#### Glen Eira Libraries and Learning Centres:

[www.facebook.com/GlenEiraLibraries](http://www.facebook.com/GlenEiraLibraries)

<https://www.instagram.com/gleneiralibraries>

#### Glen Eira Maternal and Child Health:

[www.facebook.com/GlenEiraMaternalandChildHealth](http://www.facebook.com/GlenEiraMaternalandChildHealth)

#### Glen Eira sustainable living:

[www.facebook.com/sustainablelivinggleneira](http://www.facebook.com/sustainablelivinggleneira)

#### Glen Eira Youth Services:

[www.facebook.com/GlenEiraYouthServices](http://www.facebook.com/GlenEiraYouthServices)

[www.instagram.com/gleneirayouthservices](http://www.instagram.com/gleneirayouthservices)

