



GLEN EIRA  
CITY COUNCIL

BENTLEIGH  
BENTLEIGH EAST  
BRIGHTON EAST  
CARNEGIE  
CAULFIELD  
ELSTERNWICK  
GARDENVALE  
GLEN HUNTLY  
MCKINNON  
MURRUMBEENA  
ORMOND  
ST KILDA EAST

Glen Eira City Council

# Council Plan 2025–2029



Easy Read



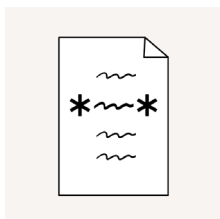
# About Easy Read



This is an Easy Read book.



Easy Read uses simple words and pictures to explain ideas.



New words are **\*bold with stars\***.



We tell you what new words mean.



Easy Read is a summary.

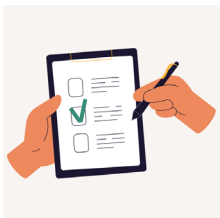


Get more information on our website  
[www.gleneira.vic.gov.au](http://www.gleneira.vic.gov.au)

# About this book



This is an Easy Read summary of our **\*Council Plan\***.



Our Council Plan is a roadmap we share with our community to explain

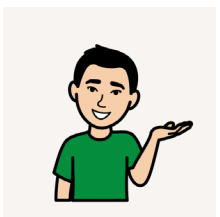
- what we will work on



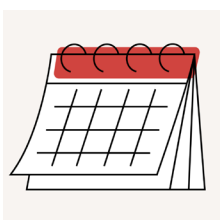
- services we will deliver



- how we can work together to make Glen Eira even better.



We call it **our plan** in this book.

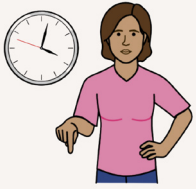


Our plan goes from **2025 to 2029**.

# How did we make our plan?



We listened to the Glen Eira community to make our plan.



We asked our community to tell us

- what Glen Eira needs now



- what Glen Eira might need in the future.



We also looked at the document called  
**\*Glen Eira Community Vision\*.**



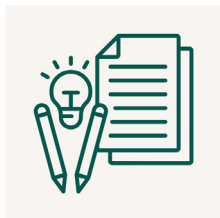
The document says what is most important  
for people who live in Glen Eira.



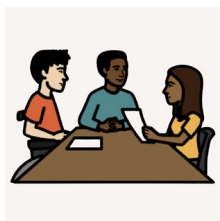
We did lots of **\*community engagement\***.



Community engagement means we ask the community to share ideas.



Community engagement included surveys and workshops.



Our **\*Community Priorities Panel\*** also helped with community engagement.



Our Community Priorities Panel includes Glen Eira community members who have

- different identities



- different backgrounds, such as people from different cultural backgrounds.

# What we learnt



You told us you want a Council that is **\*inclusive\***.



Inclusive means everyone is welcome. For example, people with disability.

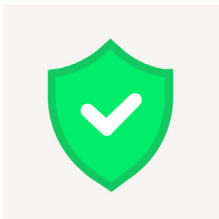


You told us you want a Council that is

- honest and clear



- focused on safety and wellbeing

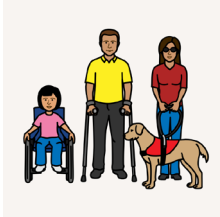


- **\*sustainable\***. Sustainable means we protect our future.





You told us you want a council that is focused on **\*connection\***.



Connection means people who live in Glen Eira feel connected to

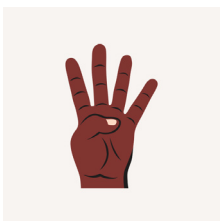
- other people



- places



- supports and services.



We made a plan with 4 focus areas to help us work towards community goals.



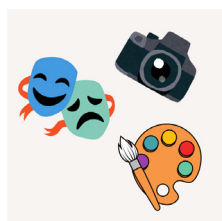
We will tell you about each focus area starting on the next page.

# Our 4 focus areas

## 1 Community safety, cohesion, health and wellbeing



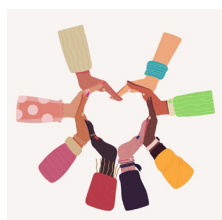
Our community feels safer.



Our arts and culture programs bring people together.

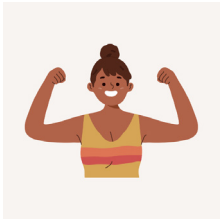


People in our community feel connected.

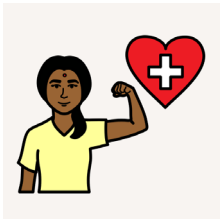


People in our community feel they belong.





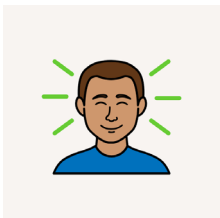
Our community has better  
**\*physical wellbeing\***.



Physical wellbeing means your  
body feels healthy.



Our community has good **\*mental health\***.

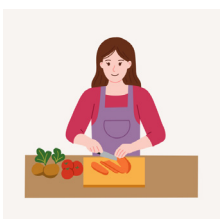


Mental health means you have

- a good state of mind



- tools when things are hard.



Our community understands  
how to live a healthy life.

## 2 Diverse, welcoming and accessible places



Lots of people in our community use our

- green spaces



- **\*community facilities\***.

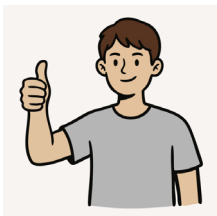


Community facilities are places like

- playgrounds



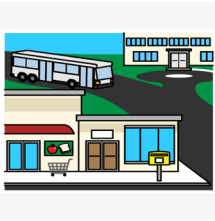
- community buildings.



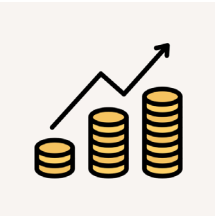
Our places are safe, healthy and **\*versatile\***.



Versatile means we meet the needs of many different people.



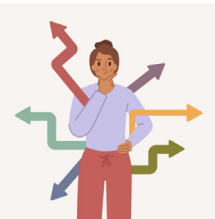
Our shopping strips are clean and full of activity.



Our shopping strips help our **\*local economy\***.



Our local economy includes money we use and spend to keep Glen Eira strong.



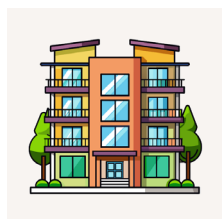
Our places have good **\*transport\*** options.



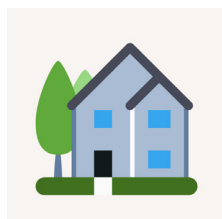
Transport includes public services to help you get around. For example, buses.



We have lots of **\*housing options\***.



Housing options are places to live for people with different support needs.



We protect the parts of Glen Eira that are important to us. For example, **\*heritage\*** buildings.



Heritage means a building is an important part of our history.

### 3 Environmental stewardship



**\*Environmental stewardship\*** includes

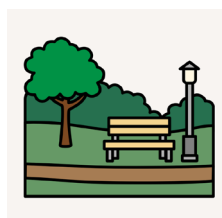
- protecting nature



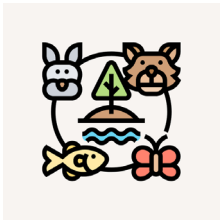
- caring for our health, now and in future



- sharing our love of where we live.



We will make our green spaces better.  
For example, parks.



We will have more **\*biodiversity\***.

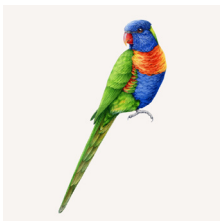


Biodiversity includes important living things around us like

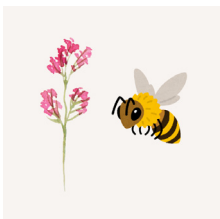
- plants



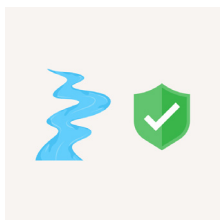
- trees



- animals



- insects.



Our air and waterways will be healthy.



We will lower council and community **\*emissions\***.



Emissions are bad gases that go into the air from things like cars and factories.

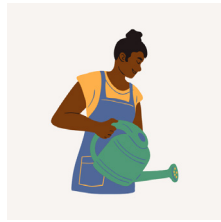


We will lower how much rubbish we put into the ground.





Our community takes part in  
**\*Caring for Country\***.



Caring for Country is about  
looking after nature.



We respect the deep connection  
**\*First Nations peoples\*** have to the land.



First Nations peoples include

- Aboriginal peoples



- Torres Strait Islander peoples.

## 4 Innovative and financially sustainable



We will use money carefully to

- protect what we have



- make Glen Eira better



- keep Glen Eira growing for the future.



Our community can see how we spend money for the community.



Our community can have a say when we make decisions about how we use money.



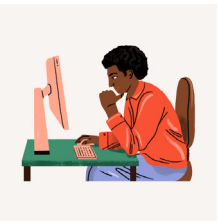
Our community trusts our decisions.



Our services meet the needs of the community.



Our **\*technology\*** helps us meet our goals.

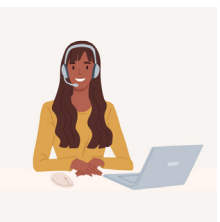


Technology includes

- our website



- different ways for community to contact us.  
For example, online chats.

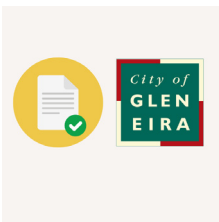


Our workforce has the skills to give great services to the community.

# Follow our work



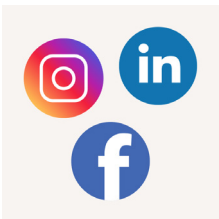
Each year we will share an **\*Annual Report\***.



The Annual Report tells you what we have been working on from our plan.



You can also read our monthly newsletters to see what we are doing over time.

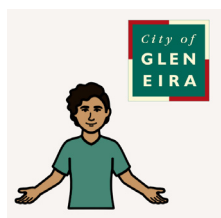


You can follow our social media and website too.

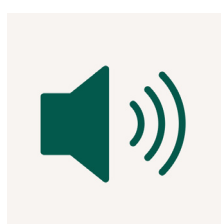


There are many ways for you to get involved in our activities.

# Contact information



Contact us for more information about our Council Plan.



You can also ask for the information in different formats. For example, audio.



Website [www.gleneira.vic.gov.au](http://www.gleneira.vic.gov.au)



Phone 9524 3333



Email [mail@gleneira.vic.gov.au](mailto:mail@gleneira.vic.gov.au)



Visit Glen Eira Town Hall, corner of Glen Eira and Hawthorn Roads, Caulfield.

# Help to call



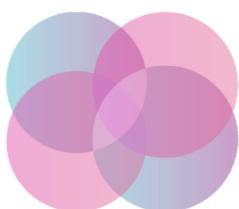
Call 131 450 for the Translating and Interpreting Service if English is not your first language.



Call 1800 555 660 for the National Relay Service if you have communication support needs.



Call 1800 555 677 if you use a teletypewriter or TTY.



Embrace **Access**

Embrace Access wrote this Easy Read book. This book was codesigned by an advisor with lived experience of disability. You must ask for permission to use the words and images in this book. Picture Communication Symbols © 1981–2025 by Tobii Dynavox. All Rights Reserved Worldwide. Used with permission. Boardmaker® is a trademark of Tobii Dynavox. Contact the team at Embrace Access to create your own codesigned Easy Read book. W: [www.EmbraceAccess.com.au](http://www.EmbraceAccess.com.au) E: [info@EmbraceAccess.com.au](mailto:info@EmbraceAccess.com.au) M: 0433 759 535