



GLEN EIRA  
CITY COUNCIL

BENTLEIGH  
BENTLEIGH EAST  
BRIGHTON EAST  
CARNEGIE  
CAULFIELD  
ELSTERNWICK  
GARDENVALE  
GLEN HUNTLY  
MCKINNON  
MURRUMBEENA  
ORMOND  
ST KILDA EAST

# GLEN EIRA COMMUNITY SAFETY SNAPSHOT 2020



GLEN EIRA



**A CARING CONNECTED  
SAFER COMMUNITY**



# CONTENTS

INTRODUCTION	2
SOCIAL COHESION	3
CRIME	4
FAMILY VIOLENCE	5
ALCOHOL AND DRUG USE	5
GAMBLING HARMS	6
ROAD SAFETY	6
ONLINE SAFETY	7
HOUSING INSECURITY	7
PUBLIC REALM AMENITY	7
CONTACT US	8

# INTRODUCTION

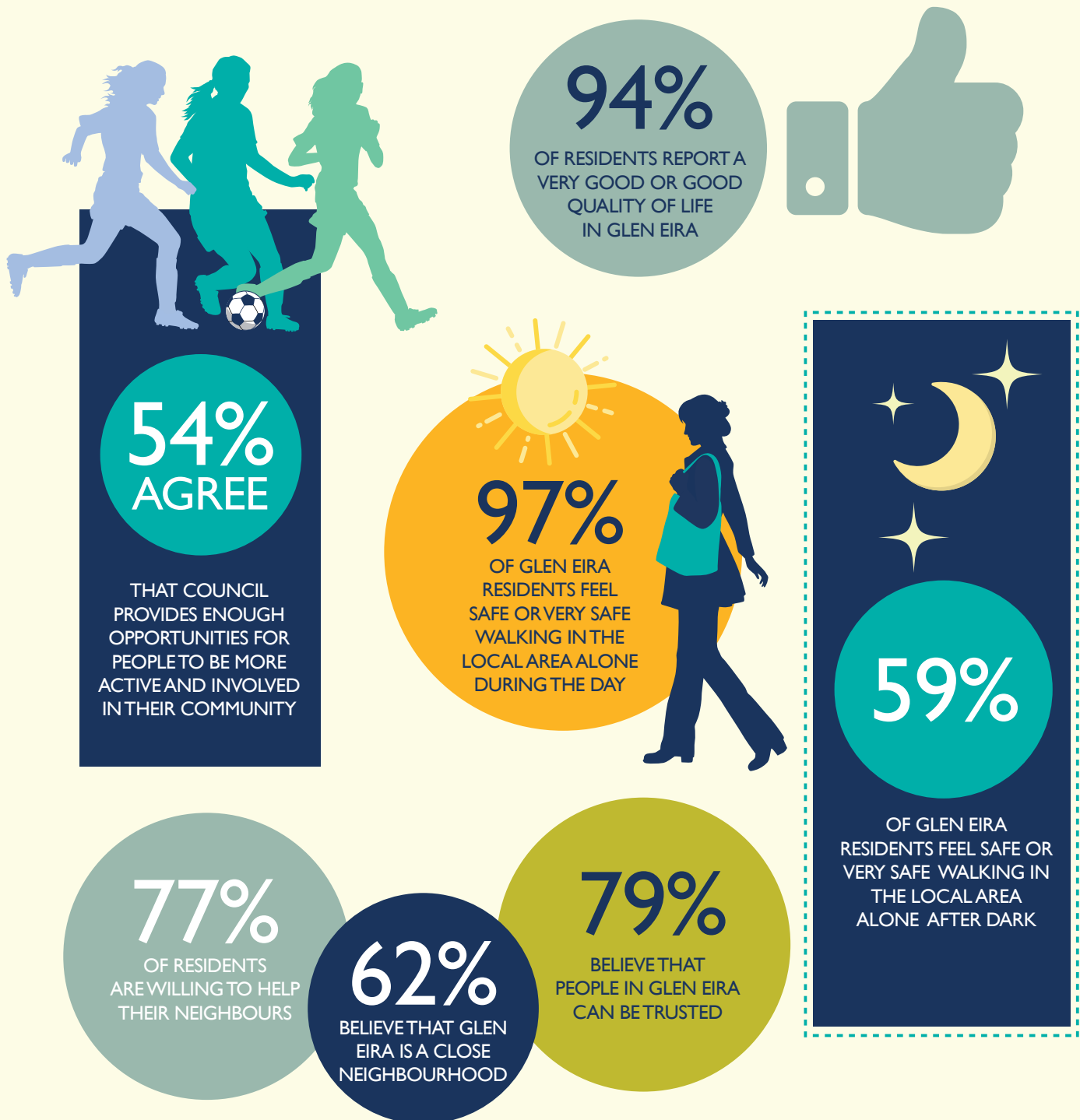
The *Community Safety Snapshot 2020* provides a point-in-time summary of community safety in the Glen Eira Local Government Area ('Glen Eira').

The *Snapshot* contains information for the 2019 calendar year, where available. However, some results have been included from other time periods, where appropriate.

# SOCIAL COHESION

Social cohesion is the strength and quality of relationships within a community.<sup>[1]</sup> A sense of belonging and community connections contribute to preventing crime and antisocial behaviour, as well as supporting people to feel safe in their community.

Glen Eira has relatively high levels of cohesion, based on results from the *2019 Local Government Community Satisfaction Survey*.<sup>[2]</sup> The survey revealed:



[1] Department of Health and Human Services (2015), [Glen Eira Community Profile](#).

[2] Department of Environment, Land, Water and Planning (2019), *Local Government Community Satisfaction Survey: Glen Eira City Council 2019 Tailored Questions*.

# CRIME

In 2019 Glen Eira had the fourth lowest rate of crime amongst the 31 Local Government Areas (LGAs) in Greater Melbourne, and the 15th lowest crime rates of the 79 LGAs in Victoria.<sup>[3]</sup>

Crime rates remained consistently low in Glen Eira in 2019, compared to the Southern Metro Region<sup>[4]</sup> and Victoria<sup>[5]</sup>.

## 2019 CRIMINAL INCIDENTS PER 100,000 PERSONS

3,668  
GLEN EIRA

5,848  
SOUTHERN  
METRO REGION

6,112  
VICTORIA

The number of incidents recorded in Glen Eira increased by 14.6 per cent, from 4,978 in 2018 to 5,706 in 2019. This was primarily due to an increase in property and deception-related crimes, such as theft and property damage. Overall property and deception-related incidents accounted for almost three quarters (72.9 per cent) of all crimes recorded in Glen Eira during the past 12 months.

## GLEN EIRA 2019 — MOST COMMON PROPERTY AND DECEPTION RELATED CRIMES

Steal from a motor vehicle	1,232
Residential non-aggravated burglary	523
Other theft	469
Criminal damage	409
Obtain benefit by deception	377
Steal from a retail store	297
Motor vehicle theft	233

## GLEN EIRA 2019 — OTHER TYPES OF CRIMES

Common assault (Non-family violence related)	144
Sexual offences	112
Breach of bail conditions	84
Serious assault (Non-family violence related)	77
Aggravated robbery	31
Homicide and related offences	2

In 2019 there were 246 crimes recorded at and around the eight train stations in Glen Eira. The most common types of crimes committed in these locations were property and deception-related offences (35.7 per cent), such as theft and property damage<sup>[6]</sup>.

[3] Crime Statistics Agency Victoria (2020), [Data Tables — LGA Criminal Incidents Visualisation — year ending December 2019](#).

[4] Ibid. The Southern Metro Region is comprised of the Local Government Areas of Bayside, Cardinia, Casey, Frankston, Glen Eira, Greater Dandenong, Kingston, Mornington Peninsula, Port Phillip and Stonnington.

[5] Crime Statistics Agency Victoria (2020), [Data Tables — Criminal Incidents Visualisation — year ending December 2019](#).

4 [6] Crime Statistics Agency (2020). Customised data request.

# FAMILY VIOLENCE

Family violence has a profound reach and impact on safety in the community.<sup>[7]</sup>

In 2019 the rate of family violence-related crime was relatively low in Glen Eira compared to Victoria.<sup>[8]</sup>

In Glen Eira there were 462 recorded incidents of family violence in 2019, an increase of 16.1 per cent since 2018. Breaches of a family violence order (230 incidents) and common assault (135 incidents) were the most prevalent types of family violence crimes in Glen Eira.<sup>[9]</sup>

More information about family violence support can be seen in our [factsheet](#).

# ALCOHOL AND DRUG USE

Alcohol and drug use impact on public safety and crime in the community.<sup>[10]</sup> Alcohol and drug issues can also be present during family violence responses and law enforcement.<sup>[11]</sup>

In 2019 Glen Eira had a lower rate of drug and alcohol-related crime compared to Victoria.<sup>[12]</sup>

The number of alcohol-related offences in Glen Eira declined from 121 in 2018, to 99 in 2019.

## RECORDED INCIDENTS OF DRUNK AND DISORDERLY IN PUBLIC



The number of drug-related offences in Glen Eira increased from 153 in 2018 to 192 in 2019, and most of these (69 per cent in 2019) related to drug possession.

## RECORDED DRUG-RELATED OFFENCES

EG. CULTIVATION, POSSESSION, USE AND DEALING OF ILLEGAL DRUGS



[7] Royal Commission in to Family Violence (2016), [Royal Commission in to Family Violence: Final Report and Recommendations](#).

[8] Crime Statistics Agency Victoria (2020), [Data Tables — Criminal Incidents Visualisation — year ending December 2019](#).

[9] Crime Statistics Agency Victoria (2020), [Data Tables — LGA Criminal Incidents Visualisation — year ending December 2019](#).

[10] Department of Health Victoria (2012), [Reducing the alcohol and drug toll: Victoria's Plan 2013–2017](#).

[11] Department of Health and Human Services (2019), [Victorian Public Health and Wellbeing Plan 2019–2023](#).

[12] Crime Statistics Agency Victoria (2020), [Data Tables — LGA Criminal Incidents Visualisation — year ending December 2019](#).

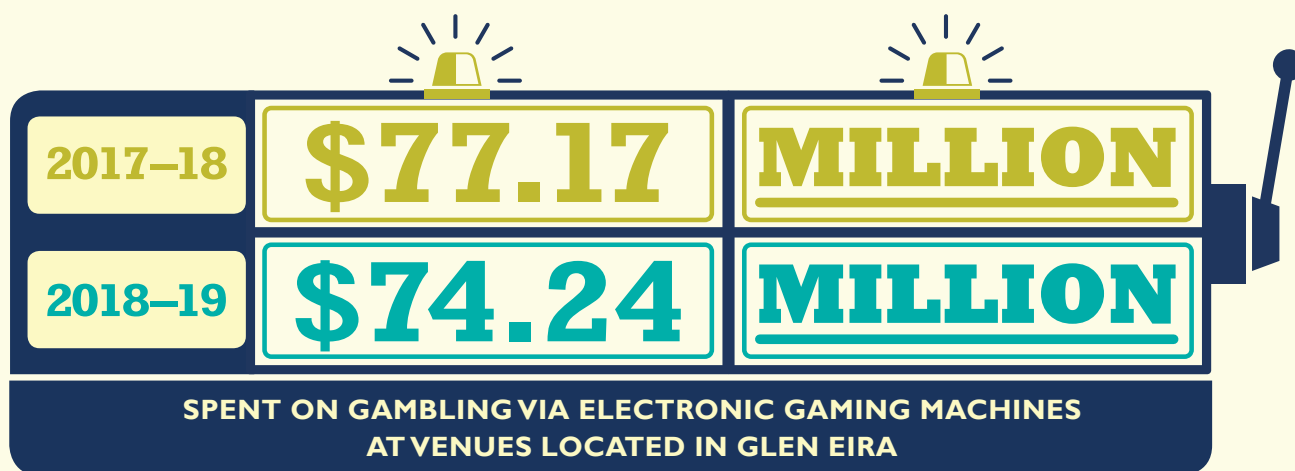
## GAMBLING HARMS

Gambling can be linked to a range of negative impacts, including physical and psychological safety, relationship conflict and criminal activity.<sup>[13]</sup>

There were 11 gaming venues and 780 electronic gaming machines located in Glen Eira during 2019, unchanged from 2018.<sup>[14]</sup>

In 2018–19 \$74.24 million was spent on gambling via electronic gaming machines at venues located in Glen Eira, down from \$77.17 million in 2017–18.<sup>[15]</sup>

More information on the harms of gambling can be viewed in our [factsheet](#).

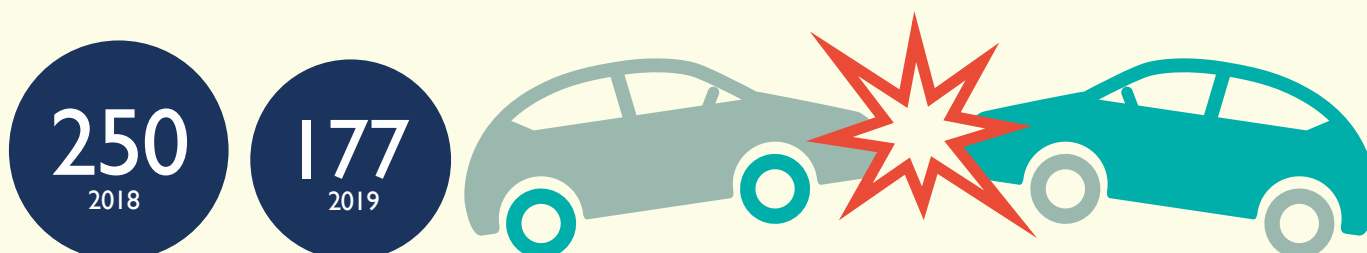


## ROAD SAFETY

The number of road crashes involving injury has decreased in Glen Eira, from 250 in 2018 to 177 in 2019. However, the number of fatalities increased from zero to three during the same period.

Most crashes involving injury in Glen Eira occurred in 60km/hour zones. The three fatalities occurred in speed zones ranging from 50km/hr to 70km/hr.<sup>[16]</sup>

### ROAD CRASHES INVOLVING INJURY IN GLEN EIRA



[13] Victorian Responsible Gambling Foundation (2016), *Assessing Gambling Related Harm in Victoria: A Public Health Perspective*.

[14] Victorian Commission for Gambling and Liquor Regulation (2020), *Current gaming expenditure by LGA — monthly*. Published 24 April 2020.

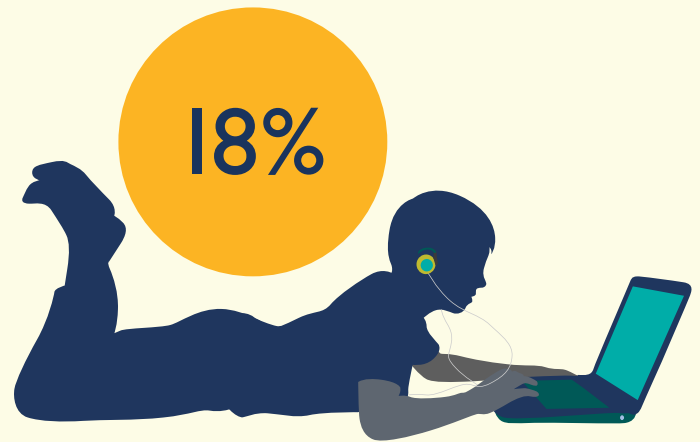
[15] Victorian Commission for Gambling and Liquor Regulation (2020), *Historical yearly expenditure 2002–2019*.

6 [16] Department of Transport (2020), data extracted from the Road Crash Information System. Date accessed: July 2020.

## ONLINE SAFETY

The internet and social media are increasingly a part of life and both have associations with risks to safety, particularly for children and young people.<sup>[17]</sup>

Council's *Glen Eira Student Resilience Survey 2017* found that almost one in five (18 per cent) of young people surveyed had experienced online bullying in the last 12 months.<sup>[18]</sup>



## HOUSING INSECURITY

High housing costs are associated with a range of risks to individuals, families and the community.

Social housing is important for vulnerable people unable to enter the private market. The number of social housing dwellings in Glen Eira has decreased over time. There were 740 social dwellings located in Glen Eira in June 2019, lower than neighbouring municipalities.<sup>[19]</sup>

Glen Eira City Council's *Social and Affordable Housing Strategy 2019–23* outlines strategies and actions that Council will pursue to help address the unmet need for social and affordable housing in Glen Eira.

More information can be found in our [Social and Affordable Housing Strategy](#).

## PUBLIC REALM AMENITY

Poorly maintained and damaged public places influence how safe people feel.

There were 80 graffiti-related crimes in Glen Eira in 2019, down from 89 in 2018. However, this type of crime is higher in Glen Eira (approximately 51 incidents per 100,000 people)<sup>[20]</sup>, compared to Victoria (42 incidents per 100,000 people).<sup>[21]</sup>



[17] Department of Health and Human Services (2020), Better Healthy Channel, [Internet Safety for Children](#).

[18] Glen Eira City Council (2018), [Glen Eira Student Resilience Survey 2017 Report](#).

[19] Department of Health and Human Services (2020), [Housing Assistance: Additional service delivery data 2018–19](#).

[20] Crime Statistics Agency Victoria (2020), [Data Tables — LGA Criminal Incidents Visualisation — year ending December 2019](#).

[21] Crime Statistics Agency Victoria (2020), [Data Tables — Criminal Incidents Visualisation — year ending December 2019](#).



GLEN EIRA  
CITY COUNCIL

## Glen Eira City Council

Corner Glen Eira and Hawthorn Roads, Caulfield

Mail address: PO Box 42

Caulfield South, 3162

Phone: (03) 9524 3333

Fax: (03) 9523 0339

[mail@gleneira.vic.gov.au](mailto:mail@gleneira.vic.gov.au)

[www.gleneira.vic.gov.au](http://www.gleneira.vic.gov.au)

### National Relay Service

If you are deaf, hearing-impaired, or speech-impaired, we ask that you call us via the National Relay Service and then ask for (03) 9524 3333.

Online: <https://internet-relay.nrscall.gov.au>

Teletypewriter (TTY): 13 36 77

Speak and Listen: 1300 555 727

### Social media

#### Glen Eira City Council:

[www.facebook.com/GlenEiraCityCouncil](http://www.facebook.com/GlenEiraCityCouncil)

#### @cityofgleneira:

[www.instagram.com/cityofgleneira](http://www.instagram.com/cityofgleneira)

#### Glen Eira arts, gallery and events:

[www.facebook.com/gleneiraarts](http://www.facebook.com/gleneiraarts)

#### Glen Eira Leisure:

[www.facebook.com/GESAConline](http://www.facebook.com/GESAConline)

<https://www.instagram.com/gleneiraleisure>

[www.twitter.com/GESAConline](https://www.twitter.com/GESAConline)

#### Glen Eira Libraries and Learning Centres:

[www.facebook.com/GlenEiraLibraries](http://www.facebook.com/GlenEiraLibraries)

<https://www.instagram.com/gleneiralibraries>

#### Glen Eira Maternal and Child Health:

[www.facebook.com/GlenEiraMaternalandChildHealth](http://www.facebook.com/GlenEiraMaternalandChildHealth)

#### Glen Eira Youth Services:

[www.facebook.com/GlenEiraYouthServices](http://www.facebook.com/GlenEiraYouthServices)

[www.instagram.com/gleneirayouthservices](https://www.instagram.com/gleneirayouthservices)

#### Glen Eira sustainable living:

[www.facebook.com/sustainablelivinggleneira](http://www.facebook.com/sustainablelivinggleneira)

