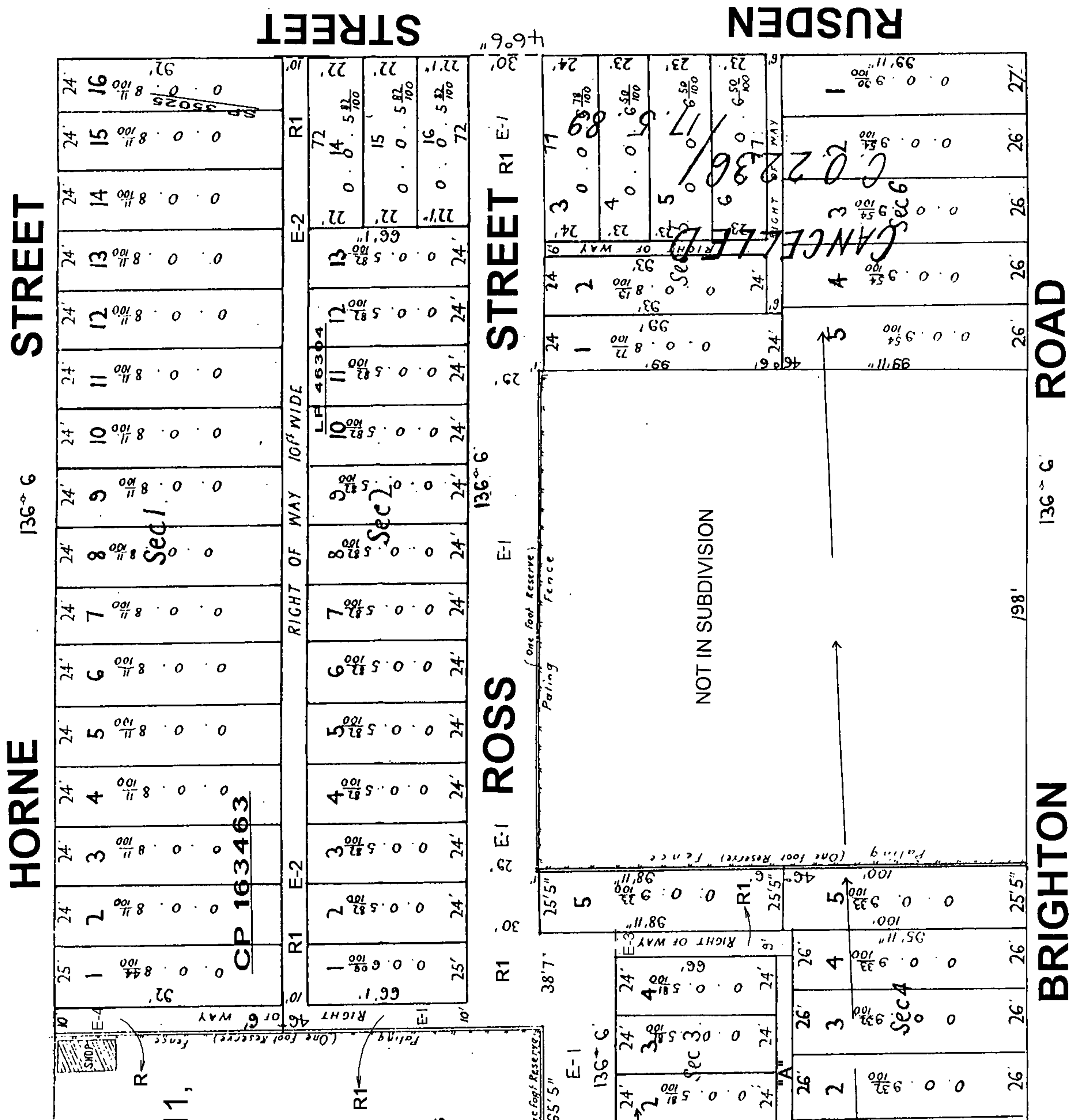


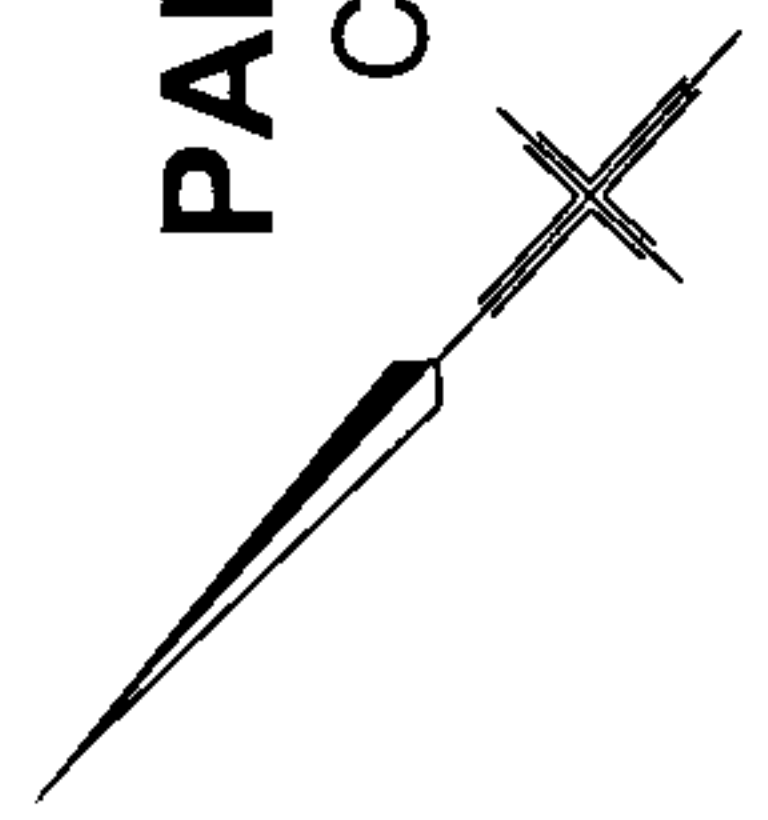
Stamp
 27/01/1987
 LP 1423
 EDITION 3



PLAN OF SUBDIVISION OF
 CROWN ALLOTMENTS 6,7,11,
 12,13,14,15,16,17&18
 SECTION 22

PARISH OF PRAHRAN
 COUNTY OF BOURKE
 VOL.1863 FOL.404

Measurements are in Feet & Inches
 Conversion Factor
 FEET X 0.3048 = METRES



COLOUR CODE
 E-1, E-2, E-3 & E-4 = BROWN

APPURTENANCIES
 AS TO LOTS 5 & 6 SEC.1, LOTS 1, 2, 3, 6 TO 9,
 14, 15 & 16 SEC. 2 TOGETHER WITH A RIGHT OF
 CARRIAGEWAY OVER E-2
 AS TO LOTS 1 & 2 SEC.4: TOGETHER WITH A RIGHT
 OF CARRIAGEWAY OVER E-3
 AS TO LOTS 5 & 6 SEC.1, LOTS 1, 2, 3, 6, 9,
 14, 15 & 16 SEC.2: TOGETHER WITH A RIGHT OF
 CARRIAGEWAY OVER E-4

Plan cancelled as to
 Sections 5 and 6,
 Vide C.O. 2236 & Corr. 89
 17.5.89
 WCAUTREUIL
 Assisted. Reg. of Titles.

ENCUMBRANCES

AS TO E-1, E-2, E-3 & E-4
 ANY EASEMENTS AFFECTING
 THE SAME.

