



BENTLEIGH
BENTLEIGH EAST
BRIGHTON EAST
CARNEGIE
CAULFIELD
ELSTERNWICK
GARDENVALE
GLEN HUNTLY
MCKINNON
MURRUMBEENA
ORMOND
ST KILDA EAST



DRAFT GLEN EIRA 2040 COMMUNITY VISION



Acknowledgements

Our Traditional Owners

Glen Eira City Council acknowledges the Boon Wurrung people of the Kulin Nation as the Traditional Owners of the City of Glen Eira. We respect and recognise Aboriginal and Torres Strait Islander peoples' history and heritage and their continuing spiritual connection to the land and seas. We value their living culture and practices and their right to self-determination. We pay respect to their Elders, past present and future.

Our Deliberative Citizens' Panel

Glen Eira City Council acknowledges the commitment, creativity and hard work of the 32 residents who volunteered to be on the Deliberative Citizens' Panel. They were randomly selected to work together to develop the Glen Eira 2040 Community Vision. They undertook this task with enthusiasm, respect, passion and integrity. We are proud of the future vision they have created.

Our community

We acknowledge the contributions of more than 3,000 community members who participated in a variety of engagement activities to share their views and aspirations on their vision of the future of Glen Eira. We thank you for helping make our City what it is and what we aspire it to be in the future.

Contents

Foreword	5
Part one: As prepared by the Glen Eira Deliberative Citizens' Panel 2020	7
Community Vision	8
Principles	11
Minority reports	23
Part two: Glen Eira City Council Report	25
The next steps	26
Community engagement process	29
Glen Eira 2040 Panel Roadmap	42
Background information	44
Profile of Glen Eira	47



Message from the Mayor

I am proud to present you with the first long-term community vision for the City of Glen Eira. A Community Vision developed by the community for the community.

The Glen Eira 2040 Community Vision was informed by a wide community engagement program that captured the aspirations and priorities of thousands of our citizens and stakeholders; local people representing diverse backgrounds, ages and suburbs.

The work of the Deliberative Citizens' Panel was central in developing the Vision before you. Thirty-two local community representatives worked closely together to create our Vision Statement and principles. Their task was a challenging one; they had to understand what members of the broader community had told us; analyse information and data; and collectively develop a long-term vision that could meet the current and future needs of our City.

I congratulate them for developing this Community Vision that will serve as the road map for our City in the future.

Cr Margaret Esakoff



Message from the CEO

The Glen Eira 2040 Community Vision provides Council with a solid foundation for Council's future planning and resource allocation. It will guide Council to deliver on what our community values most for the future of the place they live, work, study and play.

We are grateful for the time and effort many of you gave to voice your aspirations for the future of Glen Eira. I thank the Deliberative Citizens' Panel members for their commitment to produce an impressive Community Vision that is representative of a diverse and growing Glen Eira community.

For Council, delivering this vision is not something we can achieve in isolation. Shared decision-making and effective working partnerships with government, non-government organisations, businesses and of course, our community will be critical to our success.

Through the development of our *Council Plan* every four years we will work towards achieving our Community Vision.

I look forward to working with our community to bring our Community Vision to life.

Rebecca McKenzie



What is a community vision?

An aspirational description of what a community values and wants for the future of the place and community they in.

Foreword

In June 2019, Glen Eira City Council took the first steps to facilitate the development of a Community Vision; a vision that would shape the future of Glen Eira based on the values, priorities and aspirations of the Glen Eira community.

From this earliest point, Council was determined that the Community Vision would be written by the community for the community.

This draft has been produced by 32 randomly selected Deliberative Citizens' Panel members, broadly representing the Glen Eira community. It has been a meaningful and rewarding community engagement journey. These diligent panel members worked together for more than 30 hours, over multiple days, face-to-face and online, to produce a vision that gives voice and meaning to the breadth of aspirations, values and priorities shared by our Glen Eira citizens.

This plan belongs to you, the community of Glen Eira.

As the enablers of this plan, we are delighted to share with you the draft Glen Eira 2040 Community Vision. Upon its completion, the Community Vision will serve as an important guiding document for Council in all its future strategic planning processes. It will also have influence on the work of our community organisations, businesses and anyone wanting to contribute to the future of Glen Eira.

The next section outlines the Deliberative Citizens' Panel's draft *Community Vision Report* in its entirety.

The *Community Vision Report* contains:

- One vision statement.
- Six principles that received 'super majority' support from the panel (ie. 80 per cent or more of panellists' support).
- Two minority reports that outlined some further commentary that the panel felt should be noted.



Part One: As prepared by the Glen Eira Deliberative Citizens' Panel 2020

THE GLEN EIRA 2040 COMMUNITY VISION

Five months ago we were charged with the job of coming up with a vision for Glen Eira that will shape what the community will look like by 2040. We were interrupted by COVID-19 but this didn't stop us. We resumed via zoom and we have come up with the following recommendations.

This report is put together by Glen Eira 2040 Community Vision Citizens' Panel, made up of randomly and independently selected community-minded residents of various backgrounds, who are hoping to build on the success of what Glen Eira has been to date and for a better future.

We hope that these 'Vision and Principles' are visited often and kept in front of mind in making decisions and evaluation, and that this could be kept in mind as a blueprint for the Council Plan.

We are thankful for this process and hope that the council does this more often.

Community Vision

‘Our Glen Eira:
A thriving
community of
empowered citizens
working together
for an inclusive and
sustainable future.’







Principle 1:

WE WORK TOGETHER

Council and Glen Eira residents will always work together in collaboration to ensure fair and equitable decision making.

We make and communicate transparent decisions for the future of the city that genuinely represent the views of citizens.

Council to implement robust consultative processes and foster opportunities for all residents to be involved in working for the betterment of the community.

The community is engaged in the planning submission and approval process and community needs/priorities are taken into account.

Rationale

Partnerships must be forged and maintained between citizens and council to achieve the best possible decisions for the community. Honest transparent communications to ensure council actions are in the communities' best interests.

Ensure participation by a diverse group of people of all ages, races, abilities and genders, who don't have a history of involvement in council activities and public participation are given a chance to get involved with assistance to make sure the first time can become the first of many times being involved. This ensures that not only the loudest voices are heard but a breadth of community voices are heard.

Principle 2:

PLANNING FOR COMMUNITY RESILIENCE

Adaptable to addressing social, natural, & economic environmental futures and meet the challenges of change.

Council and Councillors should operate at all times under the core concepts of accountability and responsiveness, reliability and transparency for the whole community.

Rationale

The community, council and councillors require regulations that are adaptable to changing demands and emerging issues.

Planning must enhance the overall wellbeing of our community by addressing future social dynamics. E.g. planning for infrastructure needed by different groups such as children, aged care users, & families.

Policy decisions should reflect community needs more thoroughly and be tested regularly.

For example public transport will be dramatically changed in future. The council should be actively engaged in lobbying to better connect Glen Eira to the network.

As we are dealing with uncertainty, the current situation has shown that we need to be able to deal with the challenges of new events e.g. climate change.

Encouraging the support of local businesses and services by promoting the local economy.









Principle 3:

INCLUSIVE AND HEALTHY COMMUNITY

A community that feels included is physically and mentally a healthy one. All residents have a strong sense of belonging and feel safe with equitable access to all public resources in a diverse community.

As a diverse community we draw attention to: First Nations People, elderly, disabled, cultural groups/religious groups, refugees, disadvantaged groups, LGBTQI +, teenagers and children.

Rationale

Ensuring that first nation peoples play a central role — are consulted and included (indigenous sovereignty).

Post COVID-19 lessons learnt, especially that mental and physical health are key pillars to a thriving community.

The awareness of the importance of community — through compassion and humanity for example; remembering key historic events that affect our community.

Principle 4:

MAXIMISE AND DIVERSIFY OUR GREEN AND NATURAL SPACES

Preserve, regenerate and maximise green and natural spaces and develop connected green areas across council boundaries (in both private and public spaces), in consultation with Indigenous Custodians.

Rationale

Ensure the wellbeing of our community, which depends on a life-promoting, flourishing environment. Cooperate beyond council boundaries to connect green space and habitats together i.e. borrow space from other councils.

Promote sustainability by creating and encouraging innovative green space/habitats e.g. roof gardens, vertical gardens, community gardens in planning applications and public spaces.

Encourage a diverse ecosystem by planting and maintaining a greater variety of native trees and shrubs, and promoting the opportunity to plant your nature strip, for a diverse ecosystem eg. Indigenous









Principle 5:

WE ARE PROACTIVE IN MEETING CHALLENGES AND INNOVATE USING EVIDENCE-BASED METHODS

Proactive action: Continually and proactively working towards the betterment of the community and the Glen Eira environment.

Evidence Based: Trialling innovative programs using evidence-based methods before expanding to the wider community.

Overall: Finding innovative, effective and creative solutions pre-emptively for the long term monitored sustainability and wellbeing of the community.

Rationale

Trials are designed in coordination with academics to collect meaningful data. How the data is analysed and the parameters are clear and decided on before the data is collected.

Proactive actions from the council to work towards the sustainability of the Glen Eira community continuously, not waiting for alarming indications of a need for action.

Principle 6:

PROMOTE AND DEVELOP ART AND CELEBRATE CULTURE IN OUR COMMUNITY

Commitment to facilities and spaces being available and accessible to all ages and abilities to express themselves creatively and freely.

Celebrating the artistic and cultural diversity in our community.

For example an annual Glen Eira Art Prize, (art, sculpture, crafts, robotics, photography, music, dance, food, language, woodworking, literature, poetry, etc).

Rationale

With council support, this creates an empowered community which assists with mental health and wellbeing.







Minority reports

Minority Report One - Limitations of Action Oriented principles

Some principles seem more action-oriented than aspirational and value-based, ie. P4: Green Space and P6: Arts.

Comments we would like noted:

The intention of the Principle becomes too narrow and may not hold up in 20 years as a stand-alone

Principle 4: Green Space

- Recommend: broader ideas of ecological integrity and experiences
- Connection with nature
- E.g. We care for Country e.g. we can actively connect with our natural environment
- Connecting different groups in the community across boundaries of age, ethnicity etc.
- Uplifting people through a shared experience

Principle 6: Arts

- Recommend: describing Creativity and expression, and identity

Minority Report Two - Defining the intent of Sustainability

The definition of sustainability used in the draft vision might be unclear as it wasn't defined further in any of the principles.

Comments we would like noted:

The classic definition of sustainability can be defined as development of the present without compromising the ability of future generations to meet their own needs. We are going beyond the classic definition and looking at "doing more good" than only aspiring to do less harm.

Sustainability underpins every principle that we nominated and should be applied in every decision and action that is made.

Sustainability is more than a box to tick - it needs to be thought about and proactively applied for the future of our community.

Sustainability isn't something just to take into account when making other decisions, it is a goal in and of itself.



What will Glen Eira look like in the future?

Share your thoughts here or online at
www.haveyoursaygleneira.com.au

Part two: Glen Eira City Council Report

NEXT STEPS, PROCESS AND PROJECT BACKGROUND

This section provides a snapshot of the community engagement and panel process and some of the background information used to support the development of the Community Vision by the Deliberative Citizens' Panel.

Independent Consultant Support

Glen Eira City Council worked with several independent consultants including MosaicLab, Activate Consulting Group (incorporating Chatterbox and Cochrane Research Solutions) and Deliberately Engaging to ensure a robust, impartial and wide-reaching community engagement program was delivered to inform the development of the Community Vision.

The next steps

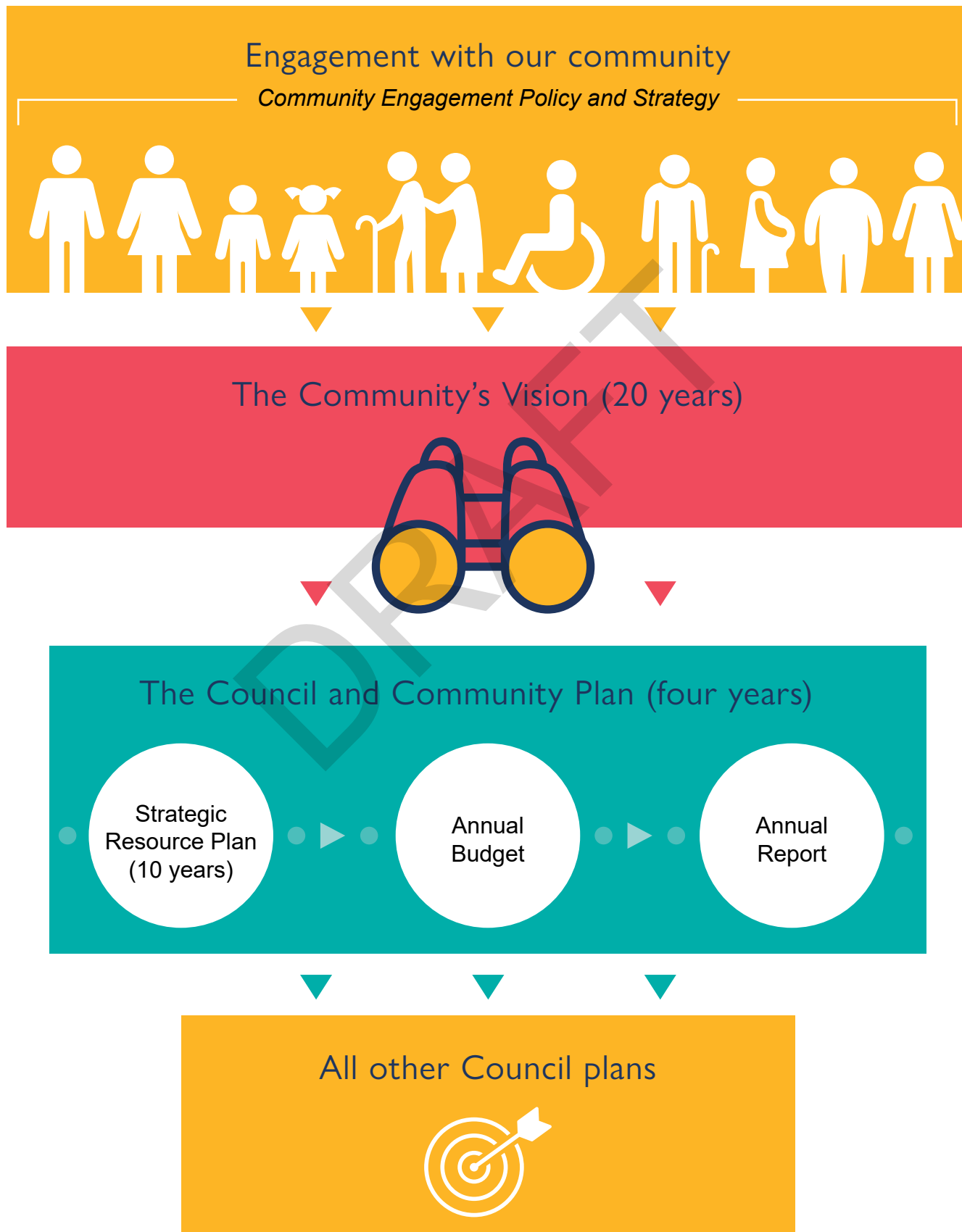
The Glen Eira 2040 draft Community Vision created by the Deliberative Citizens' Panel is now available for a period of public exhibition and the community's feedback. The Glen Eira community will be provided with four weeks from 1 February to 28 February 2021 to review and provide comment on this draft report.

After this, all the feedback received will be collated and provided to the Deliberative Citizens' Panel. The Panel will be called back for one final day of deliberation in March 2021 to review the feedback and finalise their *Glen Eira 2040 Community Vision Report*. This will then be presented for Council endorsement at a Council Meeting in April/May 2021.

Once endorsed by Council, the Glen Eira 2040 Community Vision will be used to inform all of Council's strategic planning. This includes Councils' next *Council and Community Plan 2021–25* (and subsequent plans), the 10-year *Strategic Resource Plan* and Councils' annual budgets. This will also be used to guide any new council plans that Council produces such as the *Municipal Public Health and Wellbeing Plan*, *Environmental Sustainability Strategy* and many more. All new Council plans will be required to show how they align with the Community Vision. It is through this hierarchy of plans that the work completed in this Community Vision will be turned into measurable actions shaping the future of Our Glen Eira.

As well as being an important guiding document for Council, the Community Vision has been developed to meet the requirements of the *Local Government Act 2020*. The *Act* introduces a new requirement for all local governments to prepare a long-term community vision through a deliberative engagement process. This Vision must be maintained by Council and reflected in its *Council Plan*, Action Plans, Budgets and other strategic planning. A vision that is written by the community, for the community allows for Council to better deliver services that they know the community wants and address identified community needs.

Outline of Community Vision Influence on Council Planning and Engagement





Community Engagement Process



Co-design Workshop **June 2019**

The community engagement process began in June 2019, starting with a Co-design workshop facilitated by MosaicLab. Over two workshops a group of 25 Council representatives and key community leaders came together to develop the broader engagement plan to inform the development of a Community Vision. Key stakeholders included Council's Community Engagement Advisory Committee (a group of Council staff, Councillors and community representatives); youth representatives; Community Voice members; representatives from local arts organisations; disability service providers; community houses; Victoria Police; and local sporting clubs.

The co-design process identified: the scope for engagement; different engagement stages; themes to guide discussion; types of engagement activities (to reach those groups that rarely take part in engagement processes); data required to inform the process; and what success might look like from different stakeholder and community perspectives.

The co-design process also produced the remit for the project, (ie. the question being asked): "What is our vision for the future of Glen Eira and how can we reflect the aspirations of our diverse and growing community?"



Wider community engagement **September 2019–March 2020**

The wider engagement process was conducted in two stages:

Stage one: Ideas Generation Phase: September–December 2019

Stage two: Testing Findings and Digging Deeper: January–March 2020

Stage one: Ideas generation phase: September–December 2019

From September to December 2019 several engagement activities were conducted at many key locations throughout Glen Eira and online, including:

- A launch of the Community Vision.
- A survey with our Community Voice members.
- Eight pop-up engagement activities at various community events and places in Glen Eira.
- Online engagement on Have Your Say.
- A hard copy feedback form sent to every household.
- A youth survey.
- Hundreds of sheets for children to draw their future vision.

This stage of engagement posed three guiding questions to stimulate thinking from the community.

In the future I hope Glen Eira will ...

One thing I love about Glen Eira is ...

What change is needed to make this happen ...

More than 3,000 people contributed their ideas and aspirations for the future of Glen Eira. The results of the engagement data were collated and analysed by independent consultants Activate Consulting and Cochrane Research Solutions into a preliminary report providing identifying 12 key action areas for the Glen Eira 2040 Community Vision.

These action areas were:



Green, sustainable
and environmentally
conscious



Well designed, with a mix
of quality housing and local
neighbourhood character



A place for active,
leisure and sporting
activities



Connected and easy to
move around using any
mode of transport



Diverse, inclusive
and healthy



Thriving, with vibrant
shopping strips
and businesses



Safe, clean and tidy



A place to connect,
create and learn



Supportive of
residents in need



Informed and involved



Effectively and
efficiently supported by
Council's organisation



Home to arts and
culture that celebrate our
identity and heritage

Stage two: Testing findings and digging deeper: January–March 2020

The second stage of the wider engagement process sought to gain a deeper understanding of how the community felt about these 12 action areas, to gain more specific information and to see if anything was missing. This stage of engagement was conducted through:

- a series of four pop ups;
- five community workshops;
- several kitchen table conversations and face to face meetings and;
- an online and hard copy survey.

Participants were presented with the 12 action areas and asked the following questions:

Please tell us your top three to five most important action areas for the Glen Eira community (in no order) and why.

Are there any action areas missing from the list?

If you had two minutes with the Panel members, what important advice would you give them to consider when developing the Glen Eira 2040 Community Vision?

This stage of engagement received feedback from more than 850 people. This information provided more detailed engagement data and insights for the Deliberative Citizens' Panel in creating the Community Vision.

The detailed results of both Stage one and Stage two community engagement were collated and analysed and outlined in the *Glen Eira 2040 Community Vision Community Engagement Report* completed by consultant group Activate Consulting and Cochrane Research Solutions; provided as part of the information pack for the Deliberative Citizens' Panel.



Recruitment of Deliberative Citizens' Panel **January–March 2020**

The recruitment for the panel was conducted by an independent consultant 'Deliberately Engaging' to ensure the selection of panellists was made independently of Council. During the week beginning 20 January 2020, an Expression of Interest invitation for the panel was randomly distributed to 21,000 households across Glen Eira through a letterbox drop (every third household received the invitation). Everyone aged 18 years or over living in the Glen Eira municipality was invited to register interest, except for:

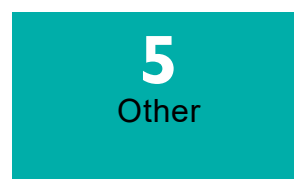
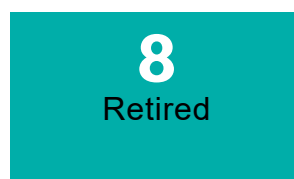
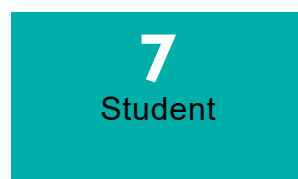
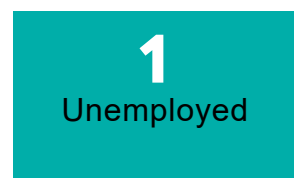
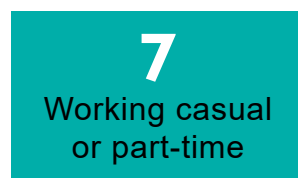
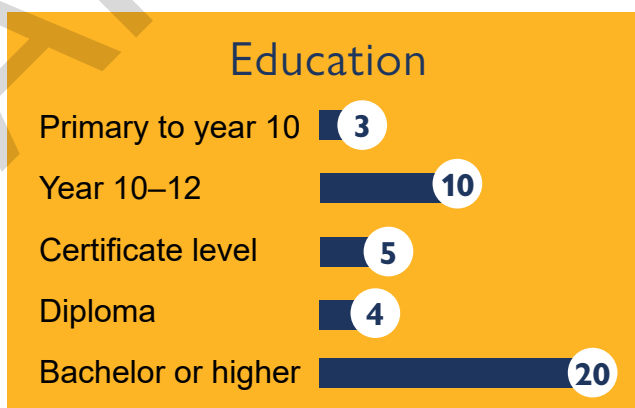
- current councillors and staff;
- all previous councillors;
- previous staff (employed by Council within the last 5 years);
- business and property owners who do not reside in Glen Eira; and
- people who work in Glen Eira but do not reside in Glen Eira.

The invitation provided the background to the project, the four panel dates, the remuneration for attendance and how to register to help create the Glen Eira 2040 Community Vision. More than 350 expressions of interest were registered.

For those that registered their interest to be on the Panel, a range of demographic data (eg. age, gender, suburb, education, employment, house tenure) were applied to stratify the sample and other diversity characteristics such as LGBTIQ+, disability and culturally and linguistically diverse people were also applied to support further community representation. This resulted in the recruitment of a 42 member representative panel of the broader demographics of Glen Eira.

Details of the panel members were provided to Glen Eira City Council on Wednesday 11 March; the day of the first Panel meeting. This ensured that Council could not influence the final group selected beyond the requested demographic representation.

Profile of Deliberative Citizens Panel (42 participants)



*Information provided by Deliberately Engaging





Face-to-Face Deliberative Citizens' Panel sessions **11 and 15 March 2020**

Face to Face Panel Session one **— Meet and Greet, 11 March 2020**

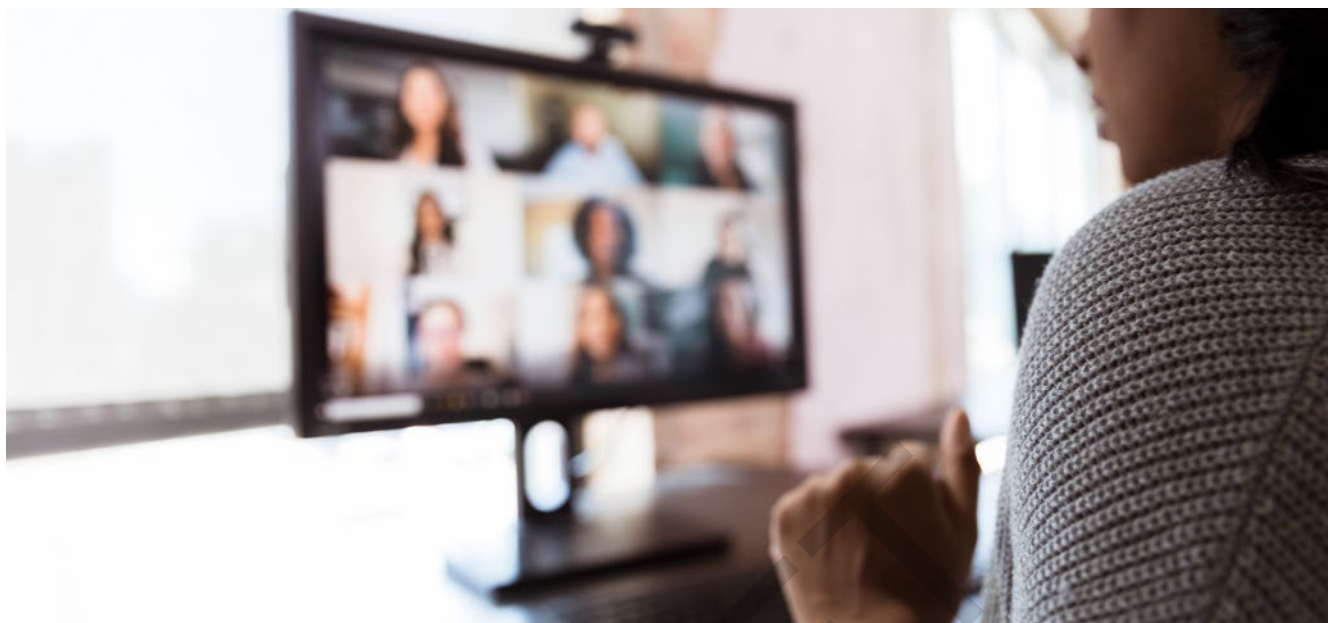
On the 11 March 2020 the first Panel session took place as a Meet and Greet. Of the 42 panel members recruited 37 attended this session. (The five people unable to attend were subsequently excluded from the Panel as full attendance was a key requirement).

The session included a formal welcome from Glen Eira Mayor Cr Margaret Esakoff and CEO Rebecca McKenzie. It also explained how the Panel would operate and make decisions, established agreements on working together; explained the importance of critical thinking, clarified the scope and opened the panel online platform. Panel members were also provided with relevant background information to support them in their role and to assist them with in-depth conversations about the future aspirations of the broader Glen Eira community and key challenges being faced. This information was provided in the form of an information pack that included that included: a *Panel Handbook*; the *Glen Eira 2040 Community Engagement Report*; a background report with details on Glen Eira's demographic profile; key challenges facing the municipality; and the role of Council.

Face to Face Panel Session two **— Full Day Deliberation, 15 March 2020**

On 15 March the panel met for their second face to face session for a full day's deliberation. This session provided the panel with an opportunity to hear from a range of presentations from a diverse group of speakers and subject matter experts to capture insights on key action areas. Some the speakers included: Anna Kaplan, Producer — Documentary 2040; Dr Robyn Cochrane, who spoke about the community engagement data and process of wider engagement; Helen Millicer, Consultant, Sustainability and environment; Knowles Tivendale, Consultant, Transport and movement and Julia Bell Consultant, Planning and housing development; as well as a range of Council Officers with knowledge expertise. The panel also commenced the process of drafting a Vision statement and seeking further information from council to support their deliberations.

This was the last face to face session of the panel. The Deliberative Citizens' Panel's sessions were consequently paused due to the impacts of the COVID-19 pandemic. The online communication portal for the panel remained open till the end of March and was then also paused.



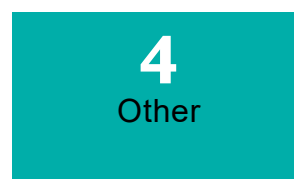
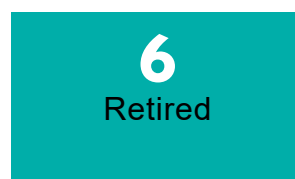
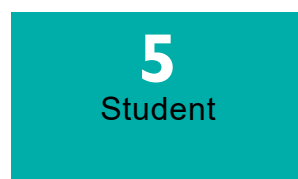
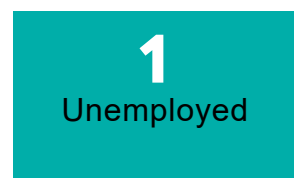
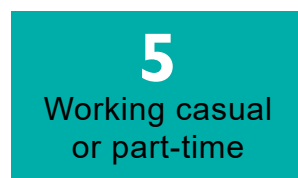
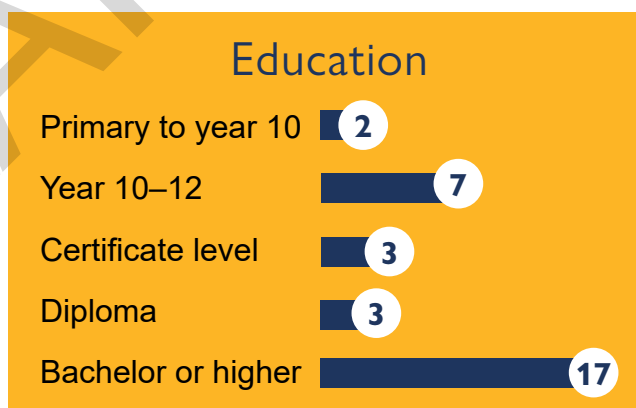
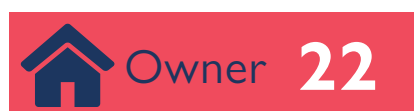
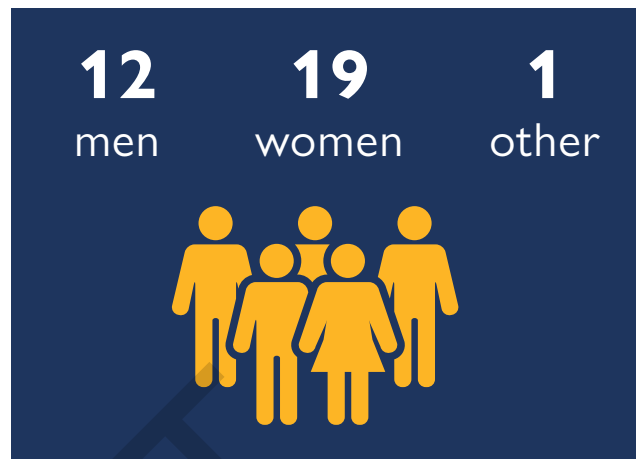
Restarting the Deliberative Citizens' Panel Online **August 2020**

It took five months before the Panel could resume their work on developing the *Glen Eira 2040 Community Vision*. As it became more apparent that the ongoing impact of the coronavirus pandemic would prevent face to face sessions indefinitely, Council made by the decision to resume the work to develop the *Glen Eira 2040 Community Vision* online.

In making this decision Council considered options and spoke with the 37 eligible panel members to understand their availability and interest in continuing their participation in developing the Glen Eira 2040 Community Vision. Out of 37 panel members, 32 agreed to continue on the panel to develop the Community Vision. Of the panel members who withdrew; three identified not having the capacity and two had since moved out of the City of Glen Eira.

The final online panel of 32 (infographic below) still provided a good representative sample of the demographics of Glen Eira, except for an over-representation of females compared to males. Due to the unique factors influencing this process, the usual rates of panel member attrition and that the panel number was above 25, it was deemed an appropriate panel size to proceed in developing the Community Vision.

Profile of Deliberative Citizens Panel (32 participants)



*Information provided by Deliberately Engaging

Online Panel sessions

The online Panel sessions were structured and facilitated by MosaicLab and were planned to allow appropriate time for deliberations and enough instruction to support the Panel in their task of developing a draft Community Vision and responding to the remit:

“What is our vision for the future of Glen Eira and how can we reflect the aspirations of our diverse and growing community?”

There were four online deliberations sessions held during August 2020 using the Zoom platform.

- Online session one, 11 August 2020, 6pm to 8pm: in this session Panel members reconnected, revisited their role and task, reconfirmed working norms and got tech-ready to work online.
- Online session two, 16 August 2020, 9am to 1pm: in this session Panel members reviewed and fine-tuned the draft Community Vision statement they had originally developed in March 2020.
- Online session three, 23 August 2020, 9am to 1pm: in this session Panel members confirmed the draft Community Vision statement and began to develop the draft principles underpinning the draft vision statement.
- Online session four, 30 August 2020, 9 to 4pm: in this session panel members reviewed and finalised the draft Community Vision and Principles and handed over the Panel's report to Council.

Panel participation numbers

The panel resumed online with 32 members for the first session; 29 on the second; 30 for the third and; 31 for the final session which is where the voting process determined the draft Vision statement and principles. Panel members who missed one session were able to be briefed to continue their role, except for the last session.



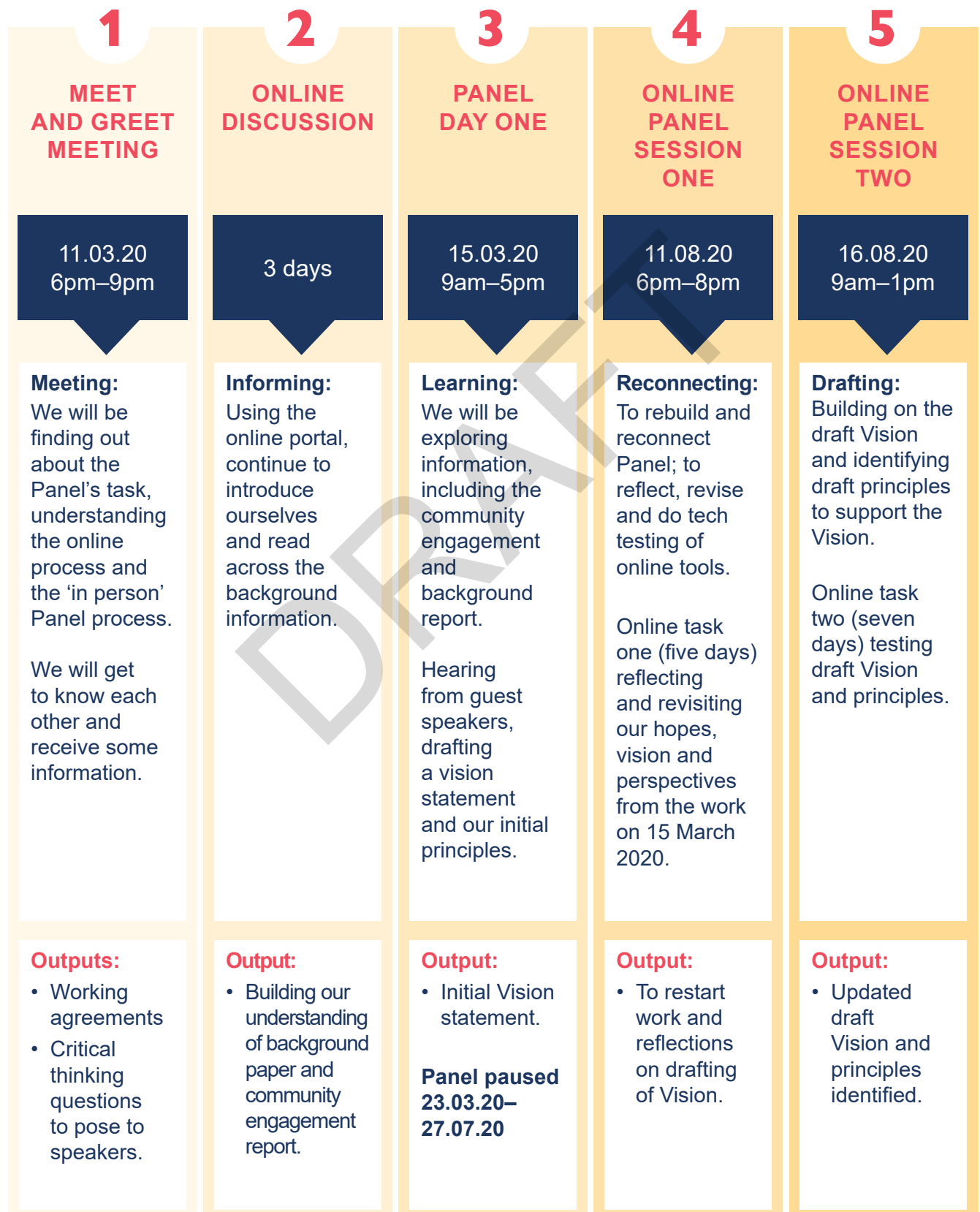
Final step for Panel — finalising the Glen Eira 2040 Community Vision

March 2021

The Deliberative Citizens' Panel is set to meet again for one final day of deliberation following the public exhibition of the draft Glen Eira 2040 Community Vision. This session will allow the panel to review and respond to the community's comments and feedback; to edit and finalise the Community Vision which will then be presented to Council for endorsement.



Glen Eira 2040 Panel Roadmap





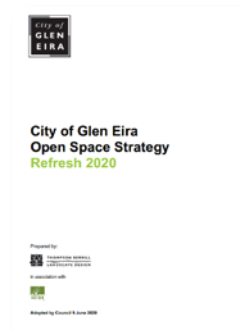
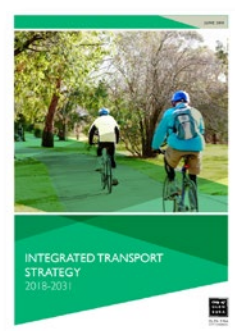
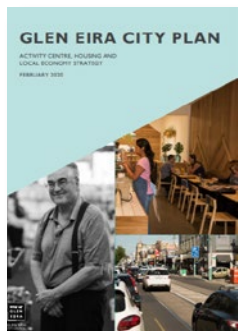
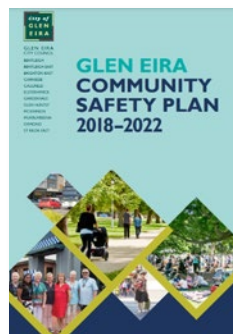
Background information

The Panel considered a wide variety of information inputs from a variety of different sources during their deliberations. In summary this included:

The *Glen Eira 2040 Community Vision Community Engagement Report* which included a collation and analysis of the wider engagement data from 3,890 participants written by independent consultants Activate Consulting and Cochrane Research Solutions.



A wide range of relevant strategic plans, data sets and reports were provided to the Panel both in hardcopy during face-to-face sessions and through the online Panel portal. Examples include the *Glen Eira Council and Community Plan 2017-2021*; *Environmental Sustainability Strategy 2016-2021*; the *Glen Eira Community Safety Plan 2018-2022* to name a few.



The Panel was also provided with a background report from Council that outlined some of the key challenges facing Glen Eira now and forecast into the future. A snapshot of the challenges is identified below:

The needs of our growing community

Understanding the impact of predicted population growth on:

- maintaining strong community connections, belonging and safety;
- responding to our community's diverse health and wellbeing needs;
- providing services to people at all stages of life;
- catering for an ageing population; and
- ensuring inclusion of people of all abilities, social identities, cultures and faith backgrounds as well as caring for those most vulnerable.

The protection of our environment and open space

Understanding the impact of critical environmental issues such as:

- tackling climate change, reducing our carbon emissions and moving to renewable energy;
- protecting the environment by increasing recycling and reducing water use and waste;
- enhancing biodiversity and maintaining a green and treed City; and
- expanding our municipal open space and balancing the community's need for sport, recreation and leisure.

The needs of our urban development, economy and movement

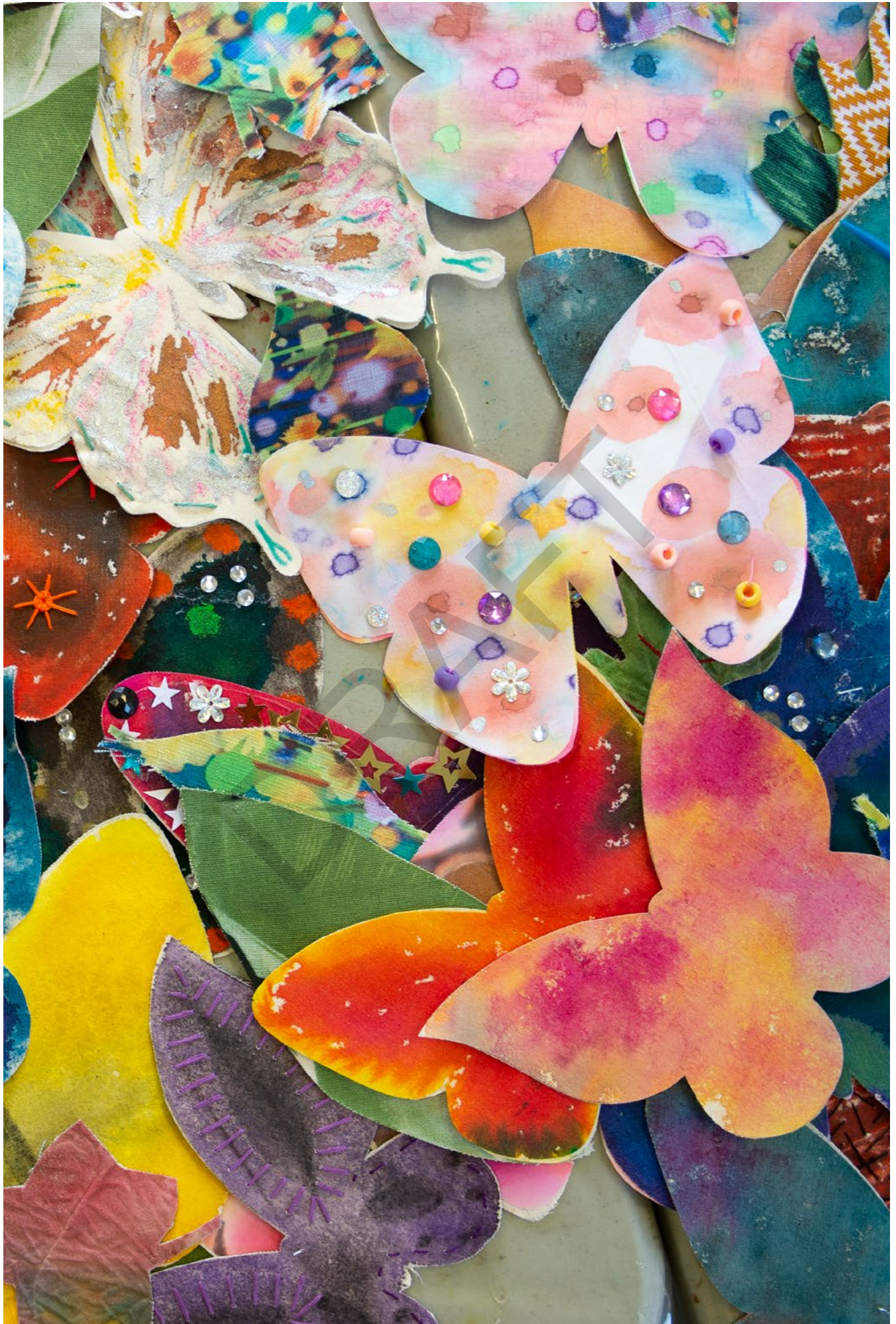
Understanding the impact of increased population growth, changing density, movement and economy on:

- managing new growth in housing while retaining neighbourhood character and amenity of the area;
- managing the quality, design and environmental sustainability features of new developments and disruptions they may cause to the local area;
- planning for accessible and diverse housing options to meet different community needs and stages of household life cycles whilst also providing social and affordable housing;
- planning and developing vibrant activity centres to live, work, play and shop;
- building local job growth and expanding more localised opportunities for employment; and
- improving traffic management and congestion to make it easier to move around the City by expanding sustainable travel choices like: walking; cycling; and public transport.

The needs of our infrastructure and community assets

Understanding the impact of maintaining and sustainably improving our infrastructure and assets to meet growth, community need, budget limitations and required standards such as:

- renewing our ageing infrastructure to ensure they are safe and can service our community now and into the future;
- making buildings, energy efficient, sustainable and accessible for all ages and abilities;
- maintaining and improving essential services such as local roads and footpaths; and
- changing approaches to building new infrastructure and facilities to meet community demand; alternative funding models and partnerships with other levels of government, developers, businesses and regional partners.



Profile of Glen Eira

People and place now and in the future

The Panel was provided with a demographic and community profile of Glen Eira and some projections and forecasts of changes expected in the future. A snapshot of this profile is outlined below.



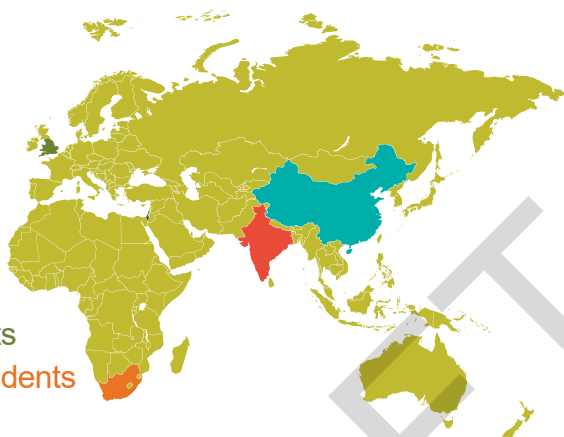
Who we are

The residents of Glen Eira are diverse and span a wide range of cultures, household types and ages. There are 52,296 occupied households in the City, the most common type being couples with children.

We are a diverse city

The most common country of birth outside Australia

China — 7,151 residents
India — 6,258 residents
England — 3,886 residents
South Africa — 3,214 residents
Israel — 2,161 residents



250

residents identify as Indigenous



16.8%

of the Glen Eira population identify as Jewish, which is the largest Jewish population in Australia.



4.4 per cent of residents require assistance with their day-to-day lives due to disability.

31.5%

Speak a language other than English.
5.5% speak Mandarin

37

is the median age in Glen Eira

We are a growing city

Population Forecast

2016— 148,583 ^[1]



2036 — 180,626 ^[2]



[1] Australian Bureau of Statistics

[2] <http://profile.id.com.au/glen-eira>



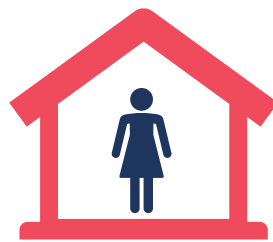
34.7%

Couple with children



8.4%

Single parent families



26.2%

Single person households



5.6%

Group households



House **50.6%**



Townhouse **24.2%**



Apartment **24.5%**

Glen Eira is a prosperous city

Employment status — persons over 15



Full-time

58%

42,863 persons

Part-time

32.2%

23,767 persons

Unemployed

5.8%

4,278 persons



Higher levels of tertiary qualification attainment

40.6%

46,724 persons over the age of 15

Most common industry



Professional, scientific and technical services

13.5%

Health care and social assistance

12.5%

Education and training

10.8%

The most common occupations are professionals (34.6%), managers (16.5%) and clerical and administration workers (13.5%).







GLEN EIRA
CITY COUNCIL

Glen Eira City Council

Corner Glen Eira and Hawthorn Roads, Caulfield

Mail address: PO Box 42

Caulfield South, 3162

Phone: (03) 9524 3333

Fax: (03) 9523 0339

mail@gleneira.vic.gov.au

www.gleneira.vic.gov.au

National Relay Service

If you are deaf, hearing-impaired, or speech-impaired, we ask that you call us via the National Relay Service and then ask for (03) 9524 3333.

Online: <https://internet-relay.nrscaill.gov.au>

Teletypewriter (TTY): 13 36 77

Speak and Listen: 1300 555 727

Social media

Glen Eira City Council:

www.facebook.com/GlenEiraCityCouncil

@cityofgleneira:

www.instagram.com/cityofgleneira

Glen Eira arts, gallery and events:

www.facebook.com/gleneiraarts

Glen Eira Leisure:

www.facebook.com/GESACOnline

<https://www.instagram.com/gleneiraleisure>

www.twitter.com/GESACOnline

Glen Eira Libraries and Learning Centres:

www.facebook.com/GlenEiraLibraries

<https://www.instagram.com/gleneiralibraries>

Glen Eira Maternal and Child Health:

www.facebook.com/GlenEiraMaternalandChildHealth

Glen Eira Youth Services:

www.facebook.com/GlenEiraYouthServices

www.instagram.com/gleneirayouthservices

Glen Eira sustainable living:

www.facebook.com/sustainablelivinggleneira