



# SPURWAY

COMMUNITY

*City of*  
**GLEN  
EIRA**

**GLEN EIRA  
CITY COUNCIL**

BENTLEIGH | BENTLEIGH EAST | BRIGHTON EAST | CARNEGIE | CAULFIELD | ELSTERNWICK | GARDENVALE | GLEN HUNTLY | MCKINNON | MURRUMBEENA | ORMOND | ST KILDA EAST



## WELCOME HOME

Spurway Community is made up of three modern cottages, each with a lounge, dining room and kitchenette, making this 30 bed aged care facility feel more like a home.

The cottages accommodate 12, 10 or eight residents, all with an intimate feeling of a shared community. Two of the cottages have private rooms with ensuites, while one cottage has private rooms with shared bathrooms.

Located on Murrumbeena Road with a bus service right outside the front door, Spurway is only a three-minute walk to the Murrumbeena train station. There's also off-street parking just 40 metres down the road, making it easy for family and friends to visit.

Spurway offers a smaller and cosy alternative to aged care living where residents can still have their privacy but can also enjoy the benefits of communal living.

# THE SPURWAY DIFFERENCE

*A home-style community*

Spurway is a real modern-day community, setting it apart from more traditional aged care facilities.

The cottages are nestled around two charming garden courtyards inviting residents to spend time outside enjoying the fresh air.

Whether spending time in the comfortable and relaxed lounges, in the garden courtyards, or their own private room, residents will feel as if they're in their own home.

Spurway offers a range of activities including an inter-generational program with the local child care centre for storytime.



“

**IT PUTS ME AT EASE KNOWING  
THAT MY MUM IS WELL-LOOKED  
AFTER AND HAPPY.**

**Julie Rose** Resident's daughter

# CARING



“

**SPURWAY'S ACTIVITIES PROGRAM  
KEEPS ME ACTIVE OR I CAN ALWAYS  
TAKE MYSELF OFF TO BOWLS —  
IT'S A GREAT PLACE TO LIVE.**

**Bert Dixon** Resident

# SERVICES

## SERVICES AVAILABLE AT NO ADDITIONAL COST

### CARE



- Basic physiotherapy
- Pain consultant and management
- Dietician
- Incontinence adviser
- Palliative care team
- Pastoral care
- Wound consultant and management

### FOOD



- Chef-prepared meals cooked onsite and fresh daily
- Rotating menu with a variety of meal choices
- Catering for special dietary requirements

### ACTIVITY



- Individual activity programs
- Group entertainment
- Community events and celebrations
- IT for seniors program
- Monthly ecumenical services

### TRANSPORT



- Wheelchair accessible transport available
- An eight-seater van available for scheduled outings
- Taxis can be arranged at reception

## OPTIONAL SERVICES OFFERED AT ADDITIONAL COST

### EXTRAS



- Podiatry
- Physiotherapy (advanced care program)
- Mobile x-ray
- Individual activity programs
- Hairdresser
- Massage therapy
- Beauty therapy
- Cable/pay television
- Telephone services

# ACCOMMODATION OPTIONS

## HOUSE ONE

Surrounded by lovely paved walkways and cottage gardens, House One has a spacious lounge with a gas log fire and mantel, and an adjacent dining room with access to the front garden and shaded outdoor seating area.

There's also a separate lounge/library for all residents and their families to enjoy as well as a kitchenette and seating for 12 people.

The expansive rooms are more like a retreat with carpeting and private ensuites. Furniture includes a freestanding wardrobe and bedside unit with a lockable valuables drawer.

For year-round comfort, all rooms are centrally heated and air-conditioned and include a hi/lo bed and comfortable lounge chair with electric lift capabilities.



### DETAILS

#### Accommodation

Single

#### Occupancy

One

#### Bathroom

Private ensuite

#### Suite size

13.1 sqm

### PAYMENT OPTIONS

#### Maximum Refundable Accommodation Deposit (RAD)

\$475,000

#### Daily Accommodation Payment (DAP)

\$52.32

### COMBINATION PAYMENT

#### 50 per cent RAD

\$237,500

#### 50 per cent DAP

\$26.16

### PAYMENT

Residents can choose to pay for their accommodation by a refundable accommodation deposit; a daily accommodation payment; or a combination of both.

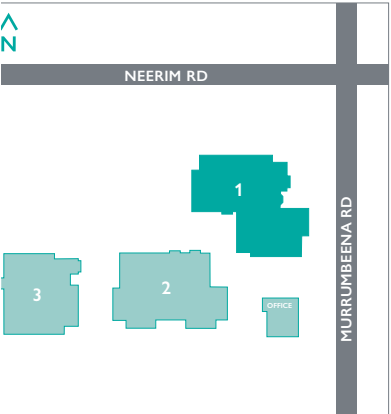
A refundable accommodation deposit is paid as a lump sum amount. A daily accommodation payment accrues daily and is paid periodically, for example, monthly. A combination payment includes both a partial lump sum and a daily accommodation payment.

A daily care fee of \$52.25 is charged to all residents in aged care facilities in Victoria.



# FLOOR PLAN

## HOUSE ONE



# ACCOMMODATION OPTIONS

## HOUSE TWO

House Two accommodates 10 residents in a warm and friendly setting. Adjacent to a peaceful courtyard, cottage gardens and paved walkways, residents can enjoy all the features of home.

The large lounge has a gas log fire and mantel, perfect for relaxing alone or with the other residents, and where residents are able to entertain family members. There is also a dining room and kitchenette.

The spacious rooms are all carpeted and include a freestanding wardrobe and bedside unit with a lockable valuables drawer. There's also a hi/lo bed and comfortable lounge chair with electric lift capabilities.

The house has three bathrooms, with a maximum of four residents sharing each one. Central heating and air-conditioning complete the comfort package.



### DETAILS

#### Accommodation

Single

#### Occupancy

One

#### Bathroom

Communal

#### Suite size

13.5 sqm

### PAYMENT OPTIONS

#### Maximum Refundable Accommodation Deposit (RAD)

\$425,000

#### Daily Accommodation Payment (DAP)

\$46.81

### COMBINATION PAYMENT

#### 50 per cent RAD

\$212,500

#### 50 per cent DAP

\$23.40

### PAYMENT

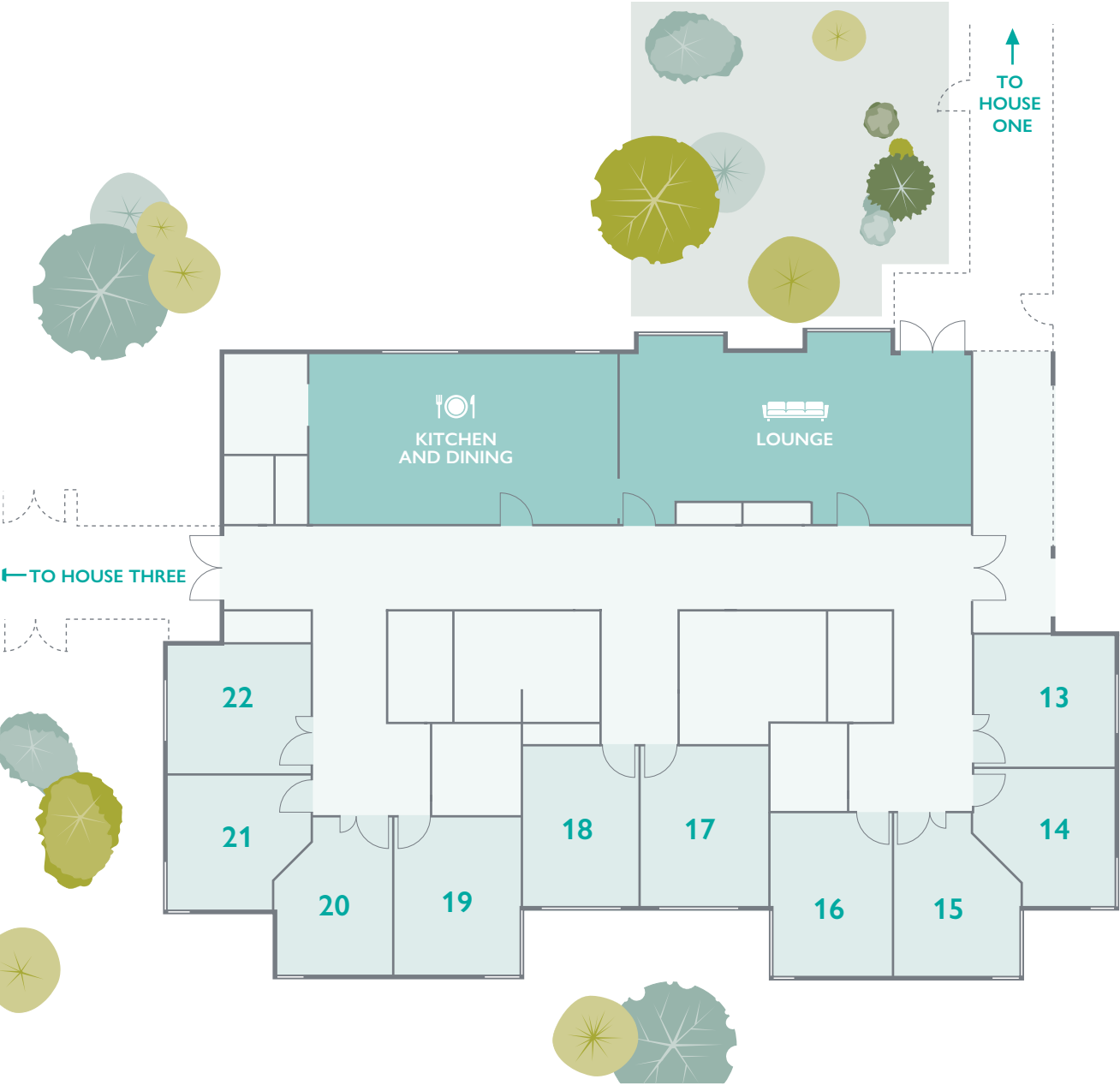
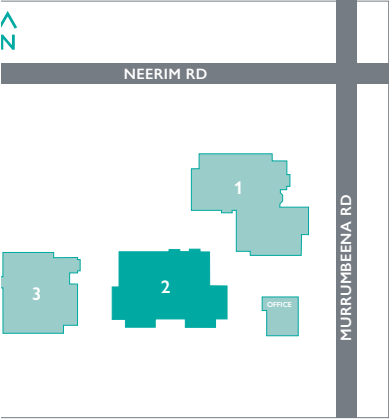
Residents can choose to pay for their accommodation by a refundable accommodation deposit; a daily accommodation payment; or a combination of both.

A refundable accommodation deposit is paid as a lump sum amount. A daily accommodation payment accrues daily and is paid periodically, for example, monthly. A combination payment includes both a partial lump sum and a daily accommodation payment.

A daily care fee of \$52.25 is charged to all residents in aged care facilities in Victoria.



FLOOR PLAN  
HOUSE TWO



# ACCOMMODATION OPTIONS

## HOUSE THREE

The most intimate of the three houses, this option caters for eight residents in a very family-oriented environment, just like you'd find in your own home.

The large lounge has a gas log fire and mantel, perfect for relaxing alone or with friends, and where residents are able to entertain family members. There is also a dining room and kitchenette.

In a lovely garden setting of paved walkways and attractive courtyard, House Three's spacious, carpeted rooms all have their own private ensuite.

Furniture includes a freestanding wardrobe and bedside unit with a lockable valuables drawer. The hi/lo bed and comfortable lounge chair with electric lift capabilities complete the picture, while central heating and air-conditioning provide year-round comfort.



### DETAILS

#### Accommodation

Single

#### Occupancy

One

#### Bathroom

Private ensuite

#### Suite size

13.5 sqm

### PAYMENT OPTIONS

#### Maximum Refundable Accommodation Deposit (RAD)

\$475,000

#### Daily Accommodation Payment (DAP)

\$52.32

### COMBINATION PAYMENT

#### 50 per cent RAD

\$237,500

#### 50 per cent DAP

\$26.16

### PAYMENT

Residents can choose to pay for their accommodation by a refundable accommodation deposit; a daily accommodation payment; or a combination of both.

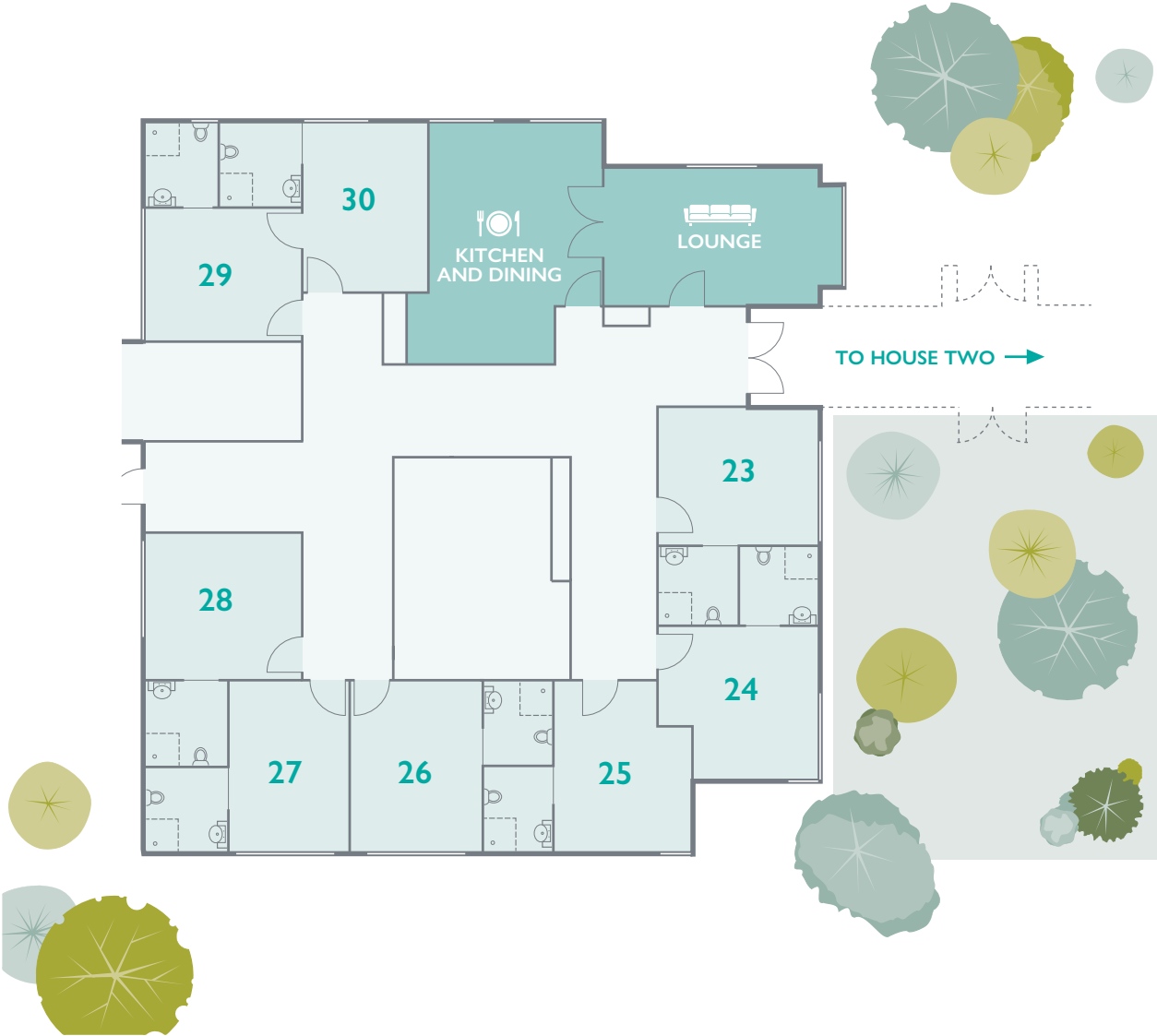
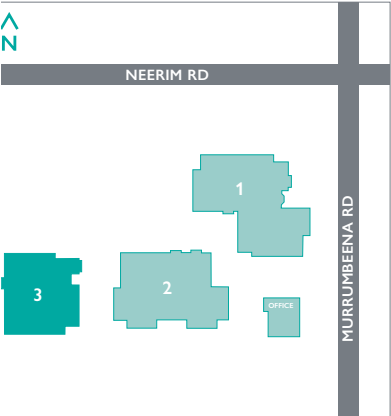
A refundable accommodation deposit is paid as a lump sum amount. A daily accommodation payment accrues daily and is paid periodically, for example, monthly. A combination payment includes both a partial lump sum and a daily accommodation payment.

A daily care fee of \$52.25 is charged to all residents in aged care facilities in Victoria.



# FLOOR PLAN

## HOUSE THREE





ENGAGING

“

**I LOVE THE ACTIVITIES AT  
SPURWAY. THERE'S ALWAYS  
SOMETHING FUN ON.**

**Marjorie Keating** Resident



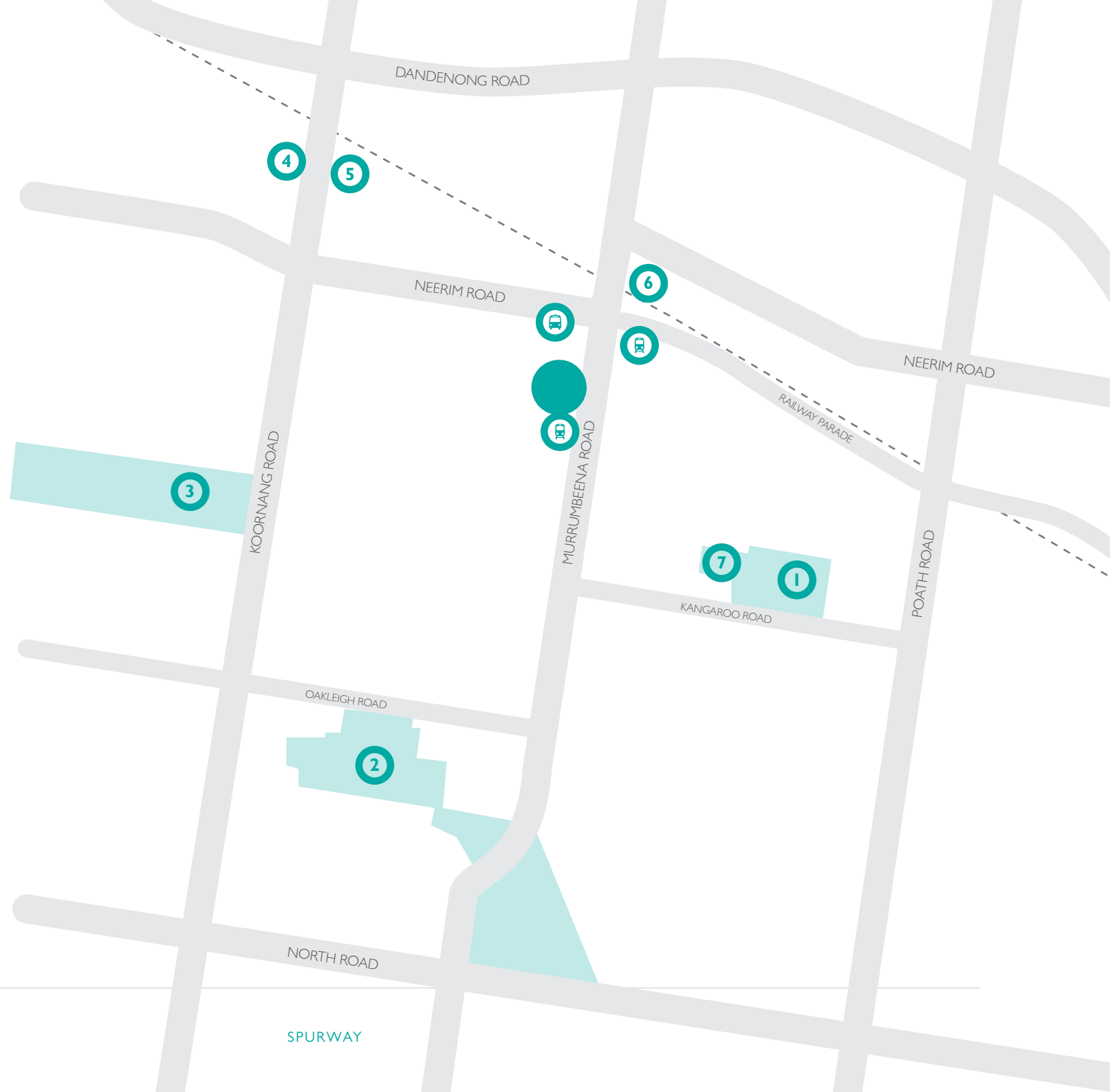
# LOCATION

## SPURWAY COMMUNITY

89–91 Murrumbeena Road  
Murrumbeena, 3163  
(Melway ref: 69 A5)

## PLACES OF INTEREST

- Spurway Community
- ① Murrumbeena Park
- ② Packer Park
- ③ Koornang Park
- ④ Woolworths Carnegie
- ⑤ Carnegie Library and Community Centre
- ⑥ Foodworks Murrumbeena
- ⑦ Murrumbeena Park Bowls Club





COSY

“

**MY GRANDKIDS LOVE COMING  
TO VISIT — THEY GET SO  
MUCH LOVE AND ATTENTION  
FROM EVERYONE.**

**John Collier** Resident



## SPURWAY COMMUNITY

89–91 Murrumbeena Road **P** 9563 1911

Murrumbeena, 3163 **F** 9563 1981

(Melway ref: 69 A5) **E** [spurway@gleneira.vic.gov.au](mailto:spurway@gleneira.vic.gov.au)

[gleneira.vic.gov.au/Community-services/Aged-and-seniors/Aged-care-facilities](https://gleneira.vic.gov.au/Community-services/Aged-and-seniors/Aged-care-facilities)

# SPURWAY

COMMUNITY