



# Flood

Floods can have a big impact on your property. They can also impact more than just your home. Roads, workplaces and essential services can all be affected by flooding and should be considered in your emergency plan.

Remember, never wait for a warning to act. It is not always possible to predict where and when flooding will occur, especially flash flooding.

## Before a flood

### Prepare your property

- Unplug appliances to prevent electrical shock when power returns.
- Raise belongings by placing them on tables, beds and benches, or move them to higher ground.
- Tie down or bring outdoor items inside.
- Monitor conditions.
- Talk to your neighbours, family and friends to see what their plans are and talk about how you can help each other.
- Ensure everyone knows where, how and when to turn off mains power, water and gas in case of emergency and evacuation.

## During a flood

- Never drive, ride, walk, play or swim in floodwaters. It can be deadly.**
- If a flood does occur, be prepared to leave. Follow the advice contained in the warning and advice messages.
- Continue to monitor conditions.
- Bring pets inside.
- Block toilets, household drains and sinks with plugs to stop sewage backflow.
- Tie down objects likely to float and cause damage. Raise poisons, oils and chemicals well above floor level.
- Turn electricity and gas off at the mains.
- Wear protective clothing such as strong boots and gloves as flood water is likely to be contaminated.

For emergency assistance due to a flood call the **SES** for help on **132 500**

## After a flood

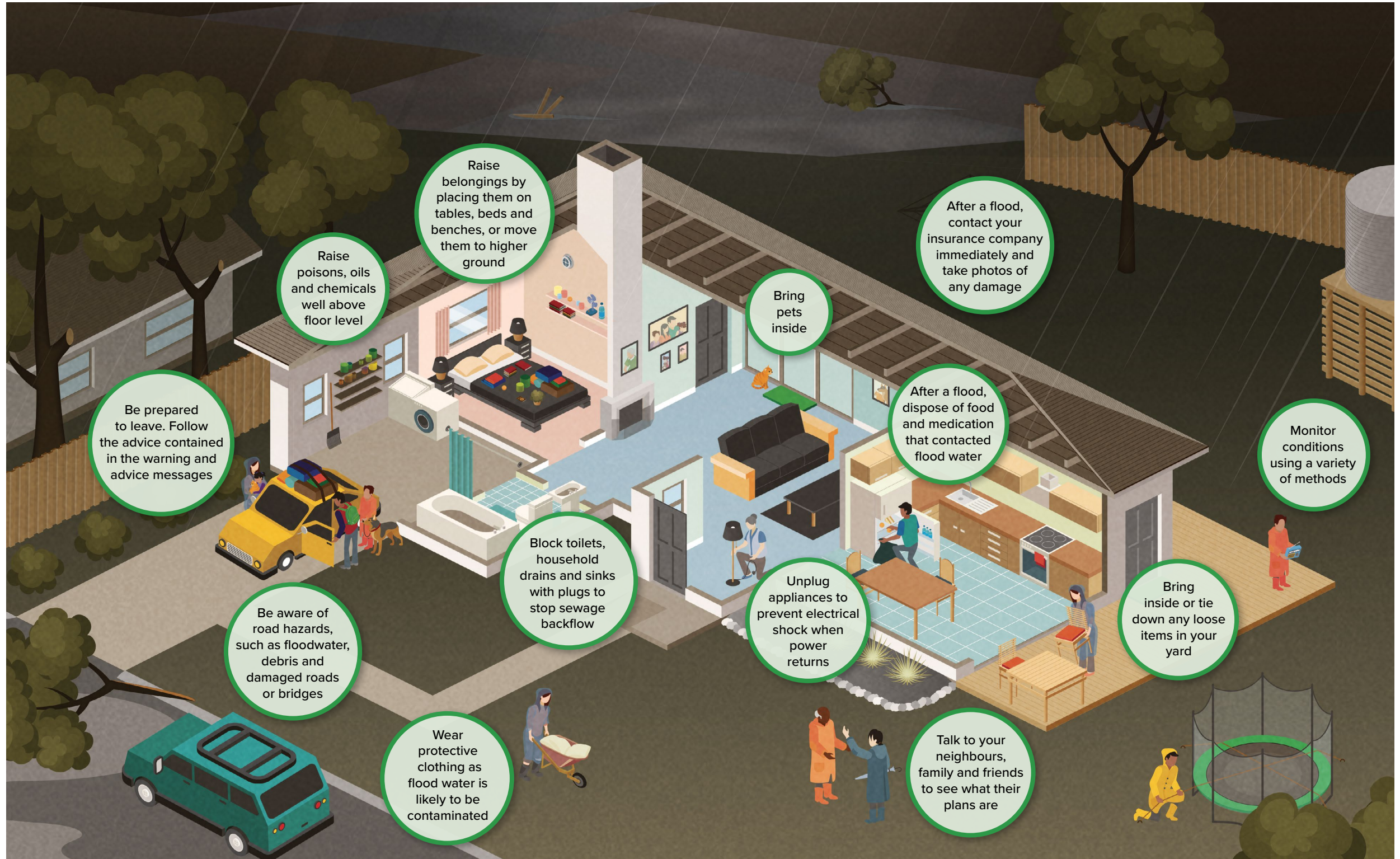
- Contact your insurance company immediately and take photos of damage.
- Be aware of road hazards, such as floodwater, debris and damaged roads or bridges.
- Dispose of food and medication that was in contact with flood water.
- Dry out and clean buildings straight away. See [betterhealth.vic.gov.au](http://betterhealth.vic.gov.au) for advice on protecting your health and cleaning your home following a flood.
- Flooding may cause sewage to backflow into your home. Contaminated areas should be professionally disinfected. Keep children and pets away until clean-up is completed.

For more information about floods visit:  
[ses.vic.gov.au/get-ready/floodsafe](http://ses.vic.gov.au/get-ready/floodsafe)





# Prepare your home for a flood



Be prepared to leave. Follow the advice contained in the warning and advice messages

Raise poisons, oils and chemicals well above floor level

Raise belongings by placing them on tables, beds and benches, or move them to higher ground

Bring pets inside

After a flood, contact your insurance company immediately and take photos of any damage

After a flood, dispose of food and medication that contacted flood water

Monitor conditions using a variety of methods

Be aware of road hazards, such as floodwater, debris and damaged roads or bridges

Block toilets, household drains and sinks with plugs to stop sewage backflow

Unplug appliances to prevent electrical shock when power returns

Bring inside or tie down any loose items in your yard

Wear protective clothing as flood water is likely to be contaminated

Talk to your neighbours, family and friends to see what their plans are