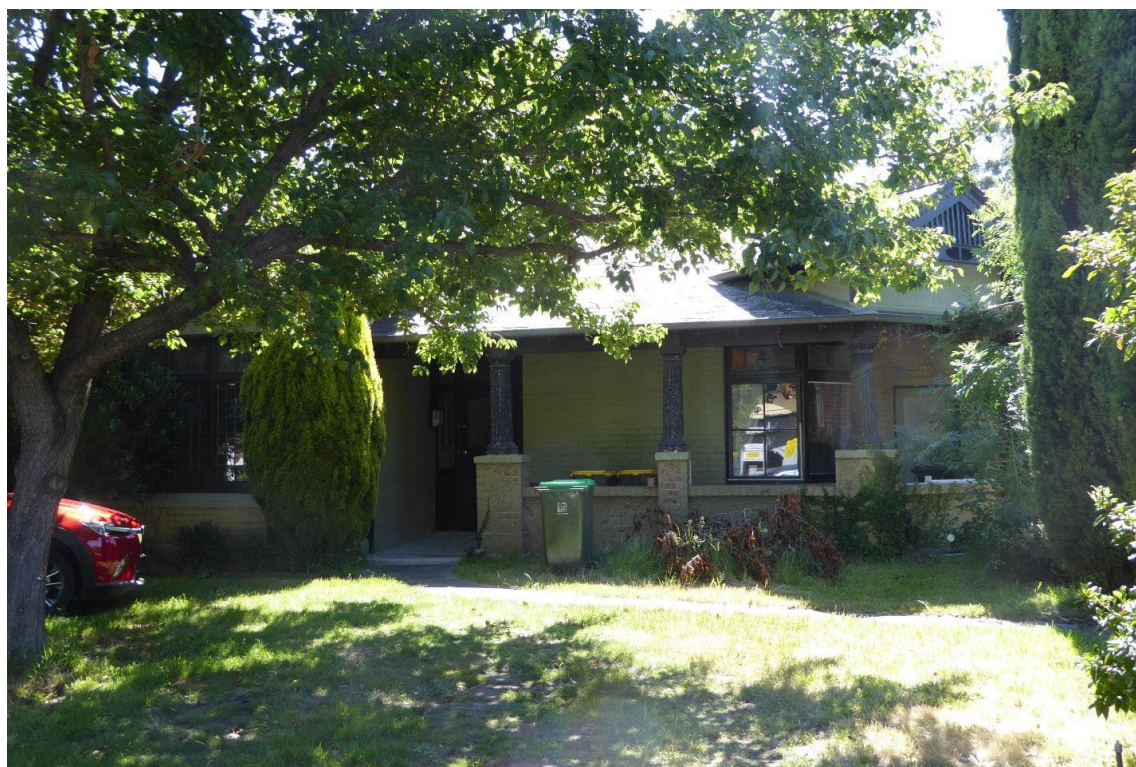


Statement of Significance: Truro (2019)

Address: 185 Koornang Road, Carnegie	Name: Truro
Place Type: Late Federation	Grading: Significant
PS ref no: HO174	Constructed: Circa 1914-15



What is significant?

The late Federation period house, initially named *Truro*, at 185 Koornang Road, Carnegie, is significant, especially its form and scale, picturesque roofscape including chimneys and clad in slate with terracotta ridge capping, distinctive detailing to the gable ends, and original openings (some with stained glass).

The single storey weatherboard additions to the rear and side of the house are not significant.

How is it significant?

Truro is of local historical and aesthetic significance to the City of Glen Eira.

Why is it significant?

Truro has historical significance as a large-scale villa constructed of brick and slate as this combination of materials was rare during the key early 20th century development phase in the area, which was predominantly characterised by more modest weatherboard houses with less elaborate detailing. Built circa 1914-15 for the Allen family, the relative grander of

Truro is illustrative of the growing affluence of the area with high grade villas to main roads. (Criterion A)

Truro has aesthetic significance as a fine, mostly intact, example of a late Federation period villa in the Queen Anne style. Its principal elements, including its asymmetrical massing, complex roofscape clad in slate with terracotta ridge capping, distinctive gable ends, lead lighting detail, and combination of finishes, are indicative of the Arts and Crafts influence and the picturesqueness associated with the idiom. (Criterion E)

Primary source

Glen Eira Heritage Review of Bentleigh and Carnegie Structure Plan Areas (Residential)
2019 (RBA Architects and Conservation Consultants)