

The background of the slide is a photograph of a park. On the left, there is a red sign on a green post that reads "LORD RESERVE" and "GLEN EIRA". In the center, there is a wooden bench on a paved path. The background is slightly blurred, showing trees and a building in the distance.

# LORD RESERVE PAVILION

## Concept Design

SK00 - PROPOSED AREIAL VIEW

SK04 - South VIEW

SK01 - PROPOSED FLORO PLAN

SK05 - South East VIEW

SK02 - PROPOSED SITE PLAN

SK06 - North East VIEW

SK03 - North West VIEW

SK07 - South West VIEW

SK08 - Entrance VIEW

5.12. 2019

PROPOSED PAVILION

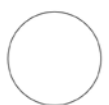
CARNEGIE SWIM CENTRE



# PROPOSED 3D PERSPECTIVES · AERIAL VIEW

Lord Reserve, Carnegie

JOB NO: 19024 SK00



DATE: 31.10.2019  
DRAWN BY: DB  
SCALE @ A1: N/A  
SCALE @ A3: N/A  
REVISION: C



**AREA SCHEDULE**

ROOM NO.	NAME	AREA	TOTAL
<b>EXTERNAL AREAS</b>			
30	DECK	207 sqm	
31	DECK	45 sqm	
32	DECK	18 sqm	
-	STAIRS & RAMPS	27 sqm	297sqm
137	FOOTPATH	154sqm	
-	LANDSCAPE	N/A	154sqm
35	BIN STORE	15 sqm	
29	SERVICES	15sqm	40sqm
22b	SERVICES	10sqm	
-	EXTERNAL CORR.	N/A	
<b>PAVILION AREA</b>			<b>681sqm (GFA)</b>
<b>SOCIAL</b>			<b>110sqm</b>
09	SOCIAL ROOM	110 sqm	
<b>AMENITIES</b>			<b>150sqm</b>
17	KITCHEN	20 sqm	
05	AMENITY 01	15 sqm	
06	AMENITY 02	15 sqm	
07	AMENITY 03	15 sqm	
08	AMENITY 04	15 sqm	
24	AMENITY 05	15 sqm	
25	AMENITY 06	15 sqm	
11	SOCIAL RM AMEN.	14 sqm	
16	CLEANER	06 sqm	
23	PUB. TOILETS	20 sqm	
<b>STORAGE</b>			<b>120sqm</b>
15	FURNITURE STORE	15 sqm	
18	KITCHEN STORE	10 sqm	
19	PARK STORE	17 sqm	
28	TENANT STORE 01	20 sqm	
22	TENANT STORE 02	21 sqm	
20	TENANT STORE 03	37 sqm	
<b>FIRST AID</b>			<b>10sqm</b>
13	FIRST AID	10 sqm	
<b>CHANGE ROOMS</b>			<b>150sqm</b>
01	CHANGE ROOM 01	25 sqm	
02	CHANGE ROOM 02	25 sqm	
03	CHANGE ROOM 03	25 sqm	
04	CHANGE ROOM 04	25 sqm	
26	CHANGE ROOM 05	25 sqm	
27	CHANGE ROOM 06	25 sqm	
<b>UMPIRES</b>			<b>33sqm</b>
21A	UMPIRE	18 sqm	
21B	UMPIRE	15 sqm	
<b>CORRIDOR</b>			<b>12sqm</b>
14	CORRIDOR	12 sqm	
<b>WALLS</b>			<b>96sqm</b>
-	WALLS	96 sqm	

PLAN CONTINUES BELOW

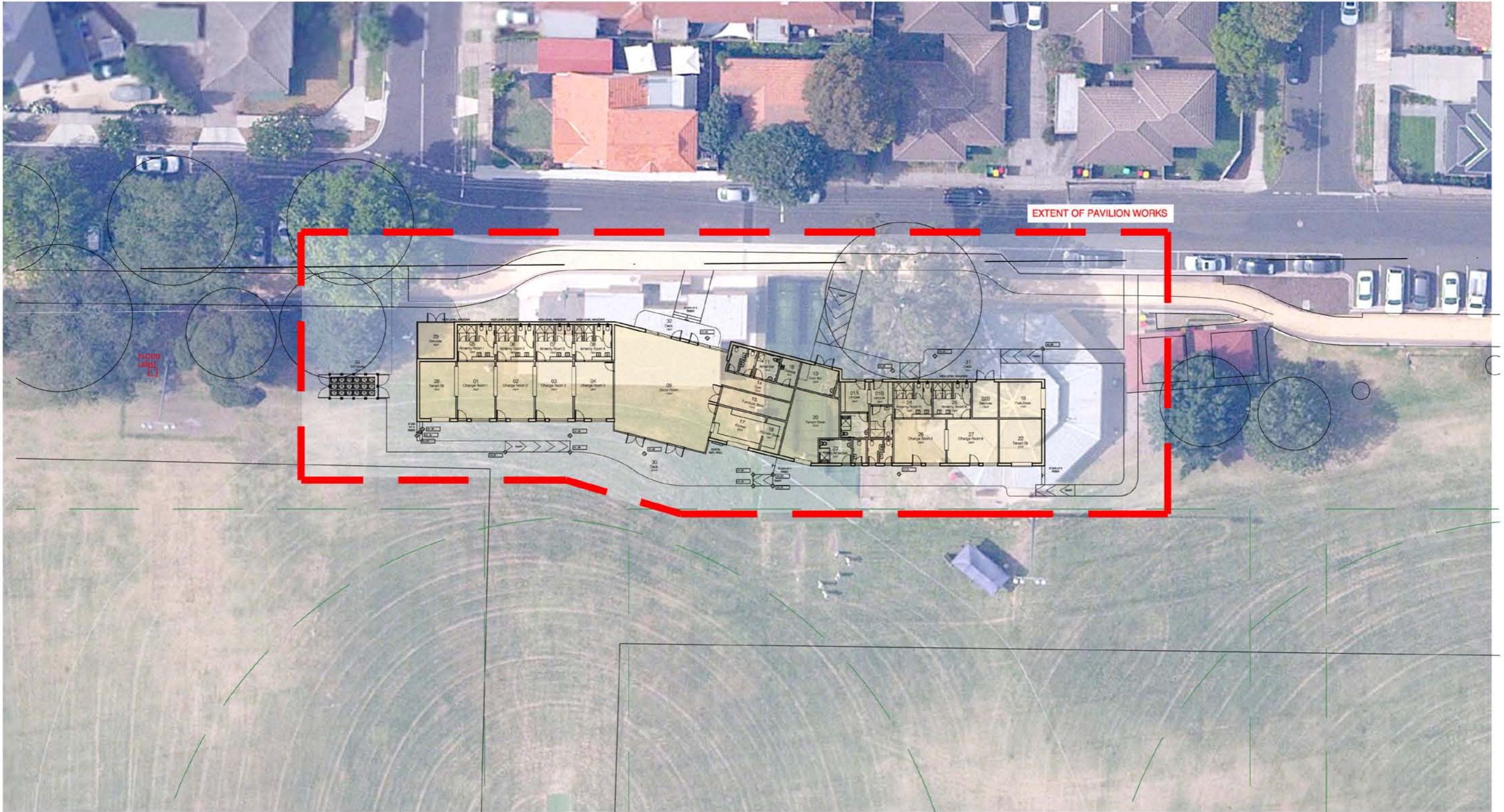
**PROPOSED FLOOR PLAN - OPTION 02**

Lord Reserve, Carnegie

JOB NO: 19024

**SK01**

DATE: 31.10.2019  
 DRAWN BY: DB  
 SCALE @ A1: N/A  
 SCALE @ A3: N/A  
 REVISION: C



# PROPOSED SITE PLAN - OPTION 02

Lord Reserve, Carnegie

JOB NO: 19024

SK02



DATE: 07.06.19  
 DRAWN BY: NF / KJ  
 SCALE @ A1: 1:200  
 SCALE @ A3: 1:400  
 REVISION: C

NOT FOR CONSTRUCTION  
 THIS DRAWING IS ONLY CONCEPTUAL IN NATURE AND DETAIL.

SAN SELMO CORSO  
'BRENTA' AUSTRAL

EXPOSED STEEL  
FASCIA FEATURE

TIMBER-LOOK SOFFIT LIN-  
ING CSP 'BUSHWOOD' OR  
SIMILAR

FEATURE METAL CLADDING  
INSTALLED HORIZONTALLY

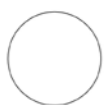


## PROPOSED 3D PERSPECTIVES · NW VIEW

Lord Reserve, Carnegie

JOB NO: 19024

SK03



DATE: 31.10.2019  
DRAWN BY: DB  
SCALE @ A1: N/A  
SCALE @ A3: N/A  
REVISION: C

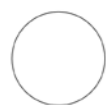
BIN STORE WITH MESH CLAD-  
DING IN 'MONUMENT' POW-  
DERCOAT FINISH



# PROPOSED 3D PERSPECTIVES · South VIEW

Lord Reserve, Carnegie

JOB NO: 19024 **SK04**



DATE: 31.10.2019  
DRAWN BY: DB  
SCALE @ A1: N/A  
SCALE @ A3: N/A  
REVISION: C

GLAZED BOX TO PROTRUDE  
OUTWARDS FOR INCREASED  
VISIBILITY FROM SOCIAL  
ROOM

DOORS TO ALTERNATE IN  
FEATURE COLOURS: GREEN,  
YELLOW & TEAL

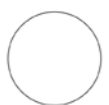


## PROPOSED 3D PERSPECTIVES · SE VIEW

Lord Reserve, Carnegie

JOB NO: 19024

SK05



DATE: 31.10.2019  
DRAWN BY: DB  
SCALE @ A1: N/A  
SCALE @ A3: N/A  
REVISION: C

TIMBER-LOOK SOFFIT  
LINING CSP 'BUSH-  
WOOD' OR SIMILAR

OPTION FOR FEATURE COL-  
OURED MESH TO SERVICES  
GATE

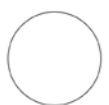


## PROPOSED 3D PERSPECTIVES · NE VIEW

Lord Reserve, Carnegie

JOB NO: 19024

SK06



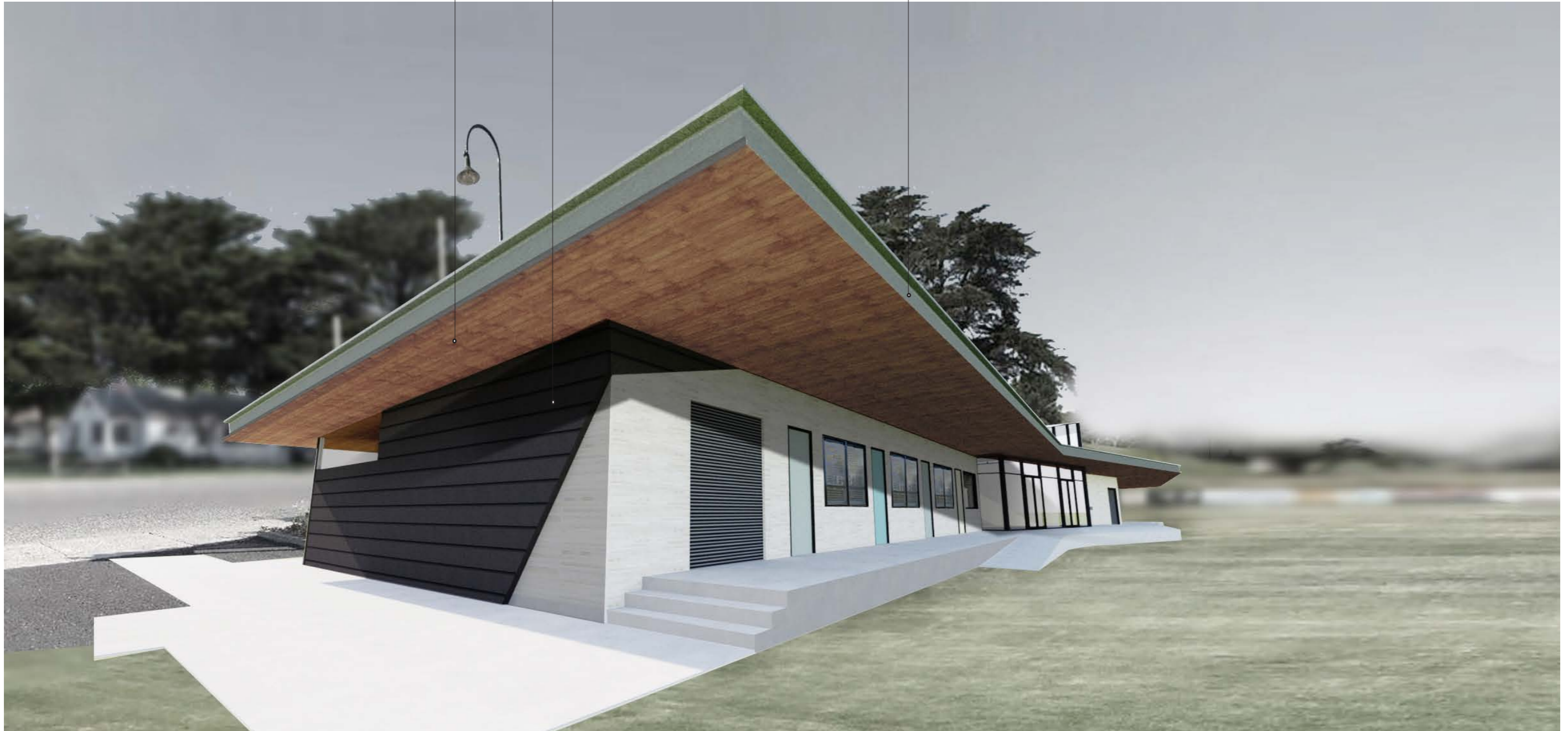
DATE: 31.10.2019  
DRAWN BY: DB  
SCALE @ A1: N/A  
SCALE @ A3: N/A  
REVISION: C



TIMBER-LOOK SOFFIT  
LINING CSP 'BUSH-  
WOOD' OR SIMILAR

FEATURE METAL CLADDING  
INSTALLED HORIZONTALLY

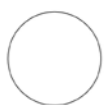
EXPOSED STEEL FASCIA  
FEATURE



## PROPOSED 3D PERSPECTIVES · SW VIEW

Lord Reserve, Carnegie

JOB NO: 19024 SK07



DATE: 31.10.2019  
DRAWN BY: DB  
SCALE @ A1: N/A  
SCALE @ A3: N/A  
REVISION: C

TIMBER-LOOK SOFFIT  
LINING CSP 'BUSH-  
WOOD' OR SIMILAR

EXPOSED STEEL FASCIA  
FEATURE



## PROPOSED 3D PERSPECTIVES · ENTRANCE VIEW

Lord Reserve, Carnegie

JOB NO: 19024

SK08



DATE: 31.10.2019  
DRAWN BY: DB  
SCALE @ A1: N/A  
SCALE @ A3: N/A  
REVISION: C