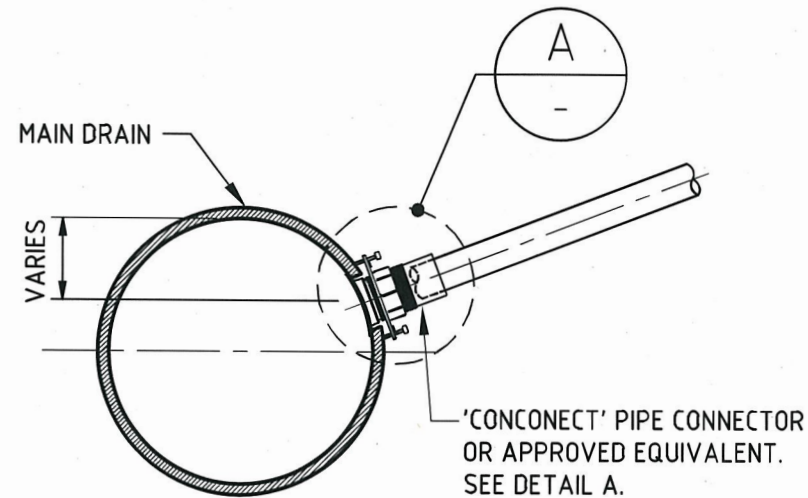
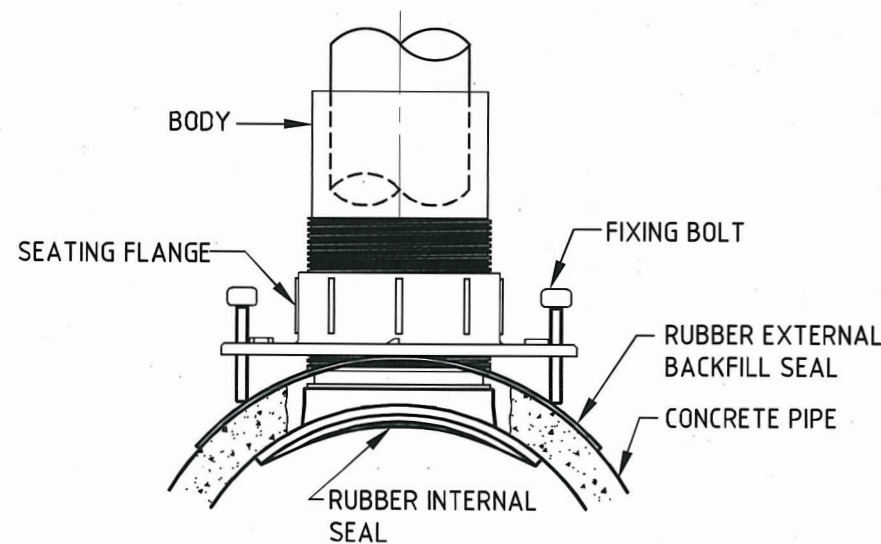


## NOTES:

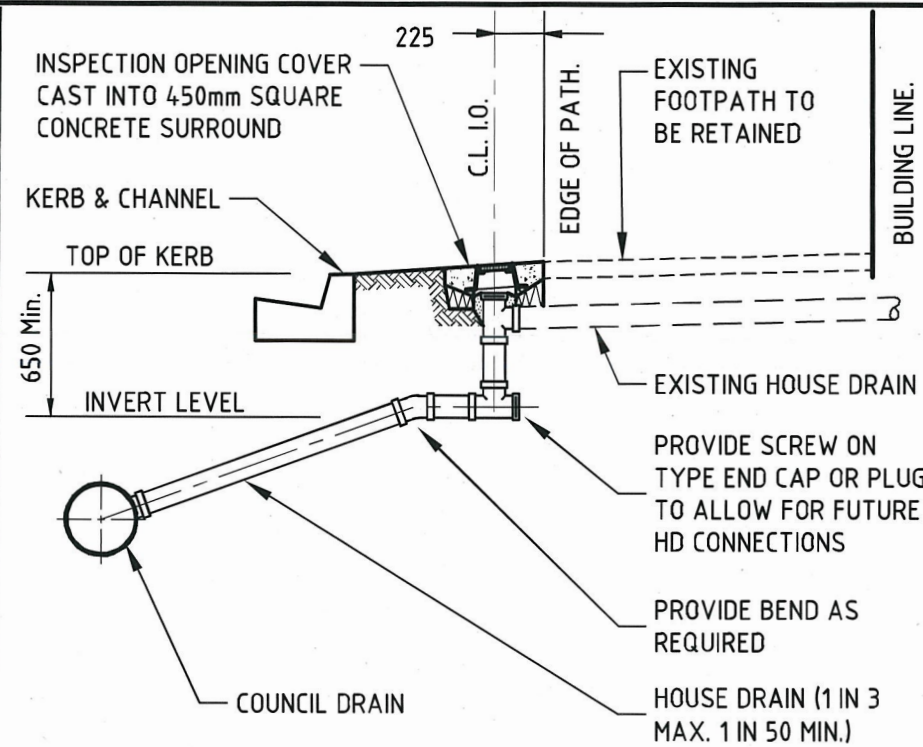
1. ALL PIPE JOINERS AND FITTINGS USED SHALL BE 100mm OR 150mm SEWER CLASS UPVC AS INDICATED ON THE DETAIL PLANS AND APPROVED BY COUNCIL SUPERINTENDENT
2. CARE IS TO BE TAKEN TO AVOID DAMAGE TO ANY UNDERGROUND SERVICES DURING EXCAVATION AND CONSTRUCTION OF HOUSE DRAINS
3. HOUSE DRAINS ARE TO BE BEDDED ON 50mm COMPACTED DEPTH OF CLASS 3 CR
4. CLASS CC3 GRADED RECYCLED CONCRETE MAY BE USED FOR DRAIN TRENCH BACKFILL
5. CAST IRON INSPECTION OPENING COVERS TO BE R&S GRATING PRODUCT FPC150 OR APPROVED EQUIVALENT FOR 100mm  $\phi$  RISERS AND R&S GRATING PRODUCT FPC229 OR APPROVED EQUIVALENT FOR 150mm  $\phi$  RISERS



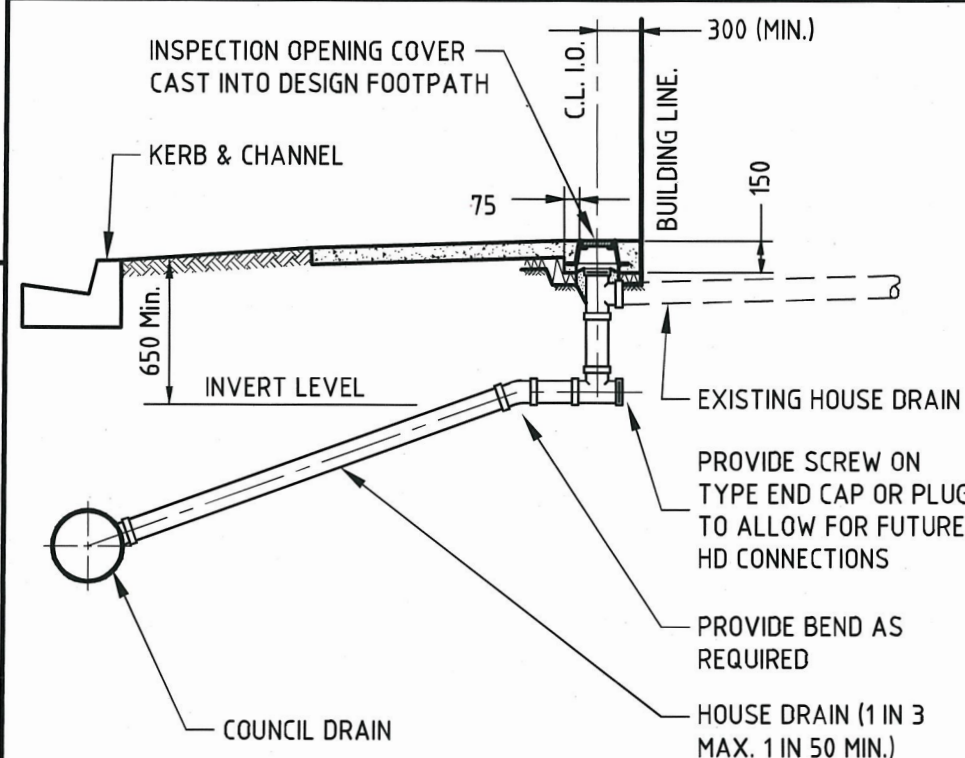
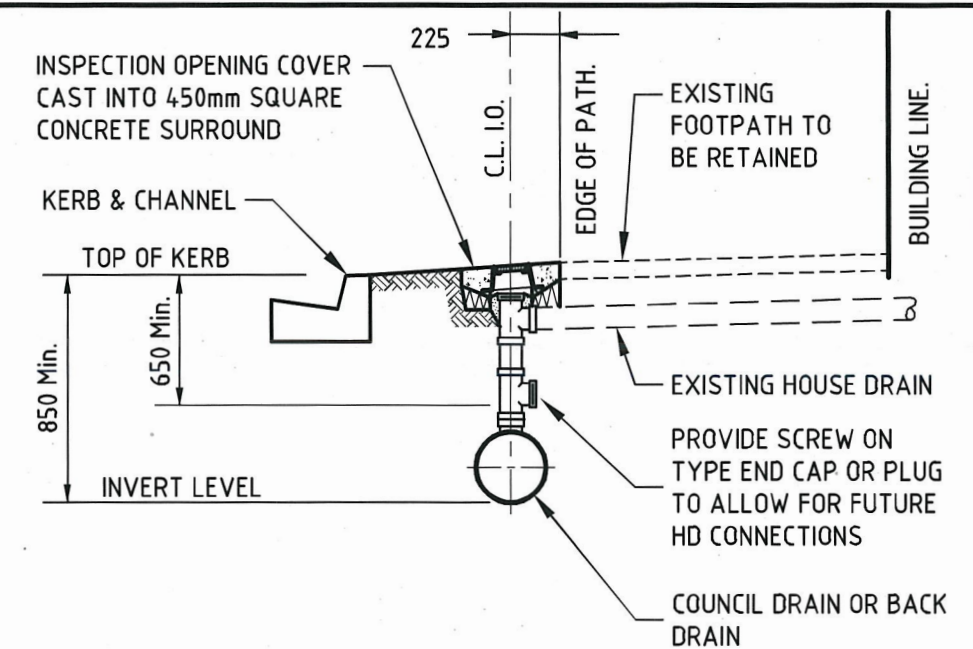
TYPE 3 (CONNECTION)



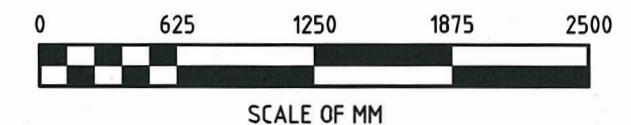
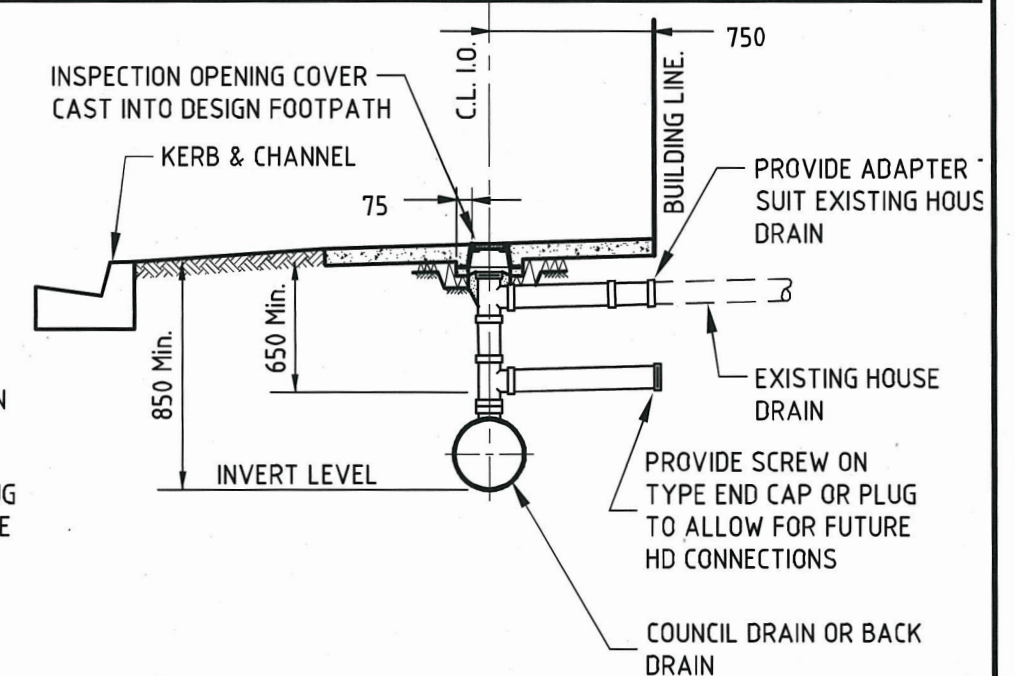
DETAIL A



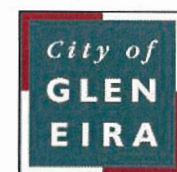
TYPE 1  
I.O. LOCATED IN NATURESTRIP



TYPE 2  
I.O. LOCATED IN FOOTPATH



**CITY OF GLEN EIRA**



Corner Glen Eira and Hawthorn Roads  
PO Box 42  
Caulfield South Vic 3162  
Phone 9524 3333  
Fax 9524 3424  
E-Mail [mail@gleneira.vic.gov.au](mailto:mail@gleneira.vic.gov.au)  
Web [www.gleneira.vic.gov.au](http://www.gleneira.vic.gov.au)

	Initials	Date	CAD Reference
Designed	CAP WORKS	AUG 2009	STD-202_10
Drawn	CAP WORKS	AUG 2009	Reference
Checked			-
Approved	<i>[Signature]</i>		Version
Dir. Assets & Facilities	Date	16.01.12	-

## HOUSE DRAIN INSPECTION OPENING AND CONNECTION

SCALE: AS SHOWN	DRG. NO. STD-202	SHEET 1 OF 2
-----------------	------------------	--------------



