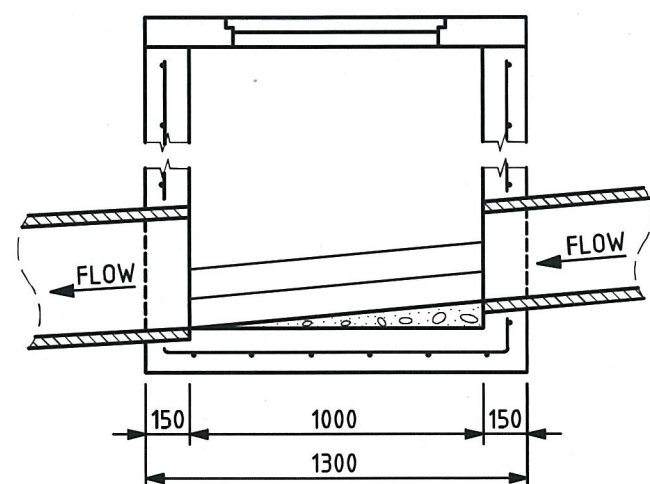
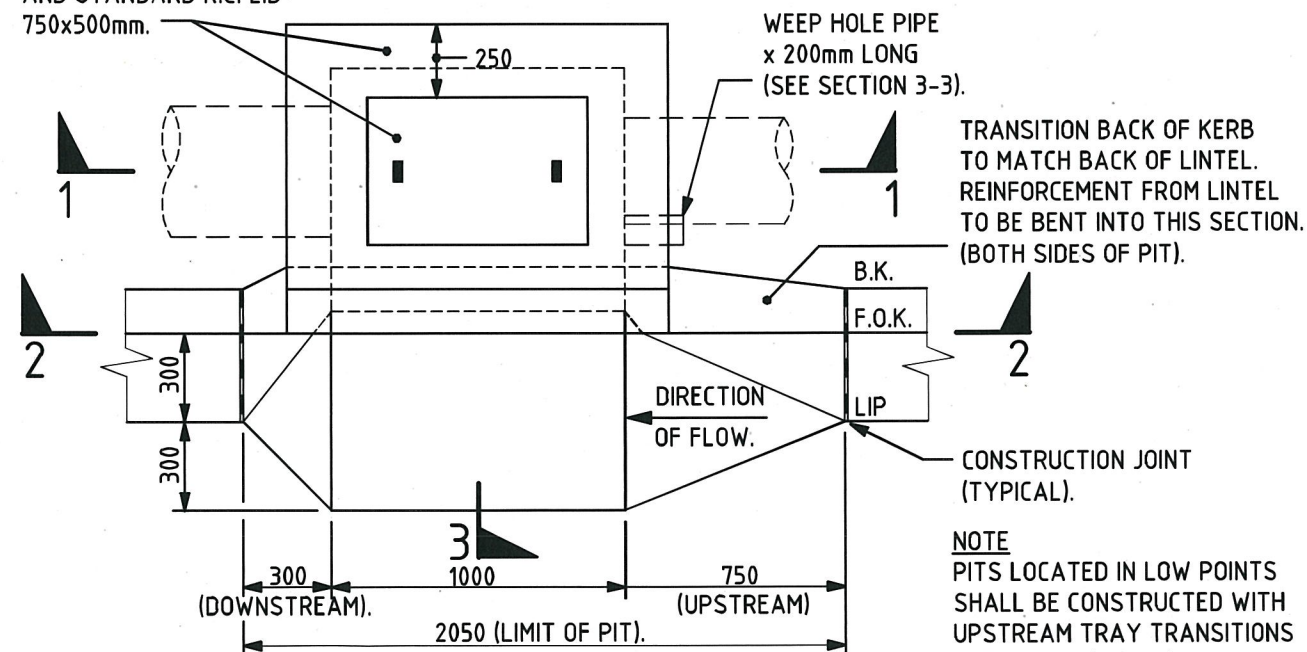


SECTION 2-2

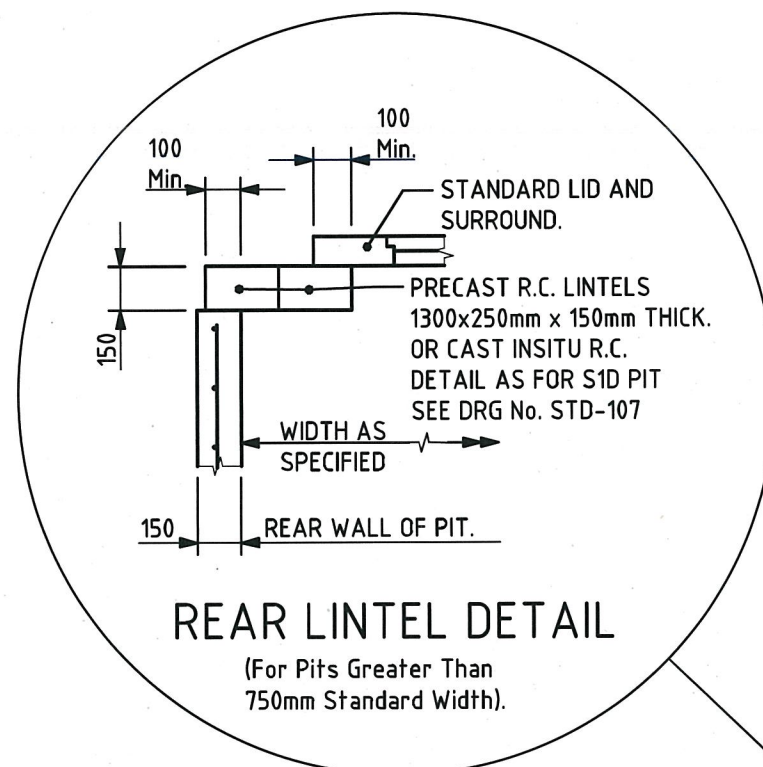


SECTION 1-1

PRECAST R.C. LID SURROUND
1300x900mm x 125mm THICK
AND STANDARD R.C. LID
750x500mm.



PLAN

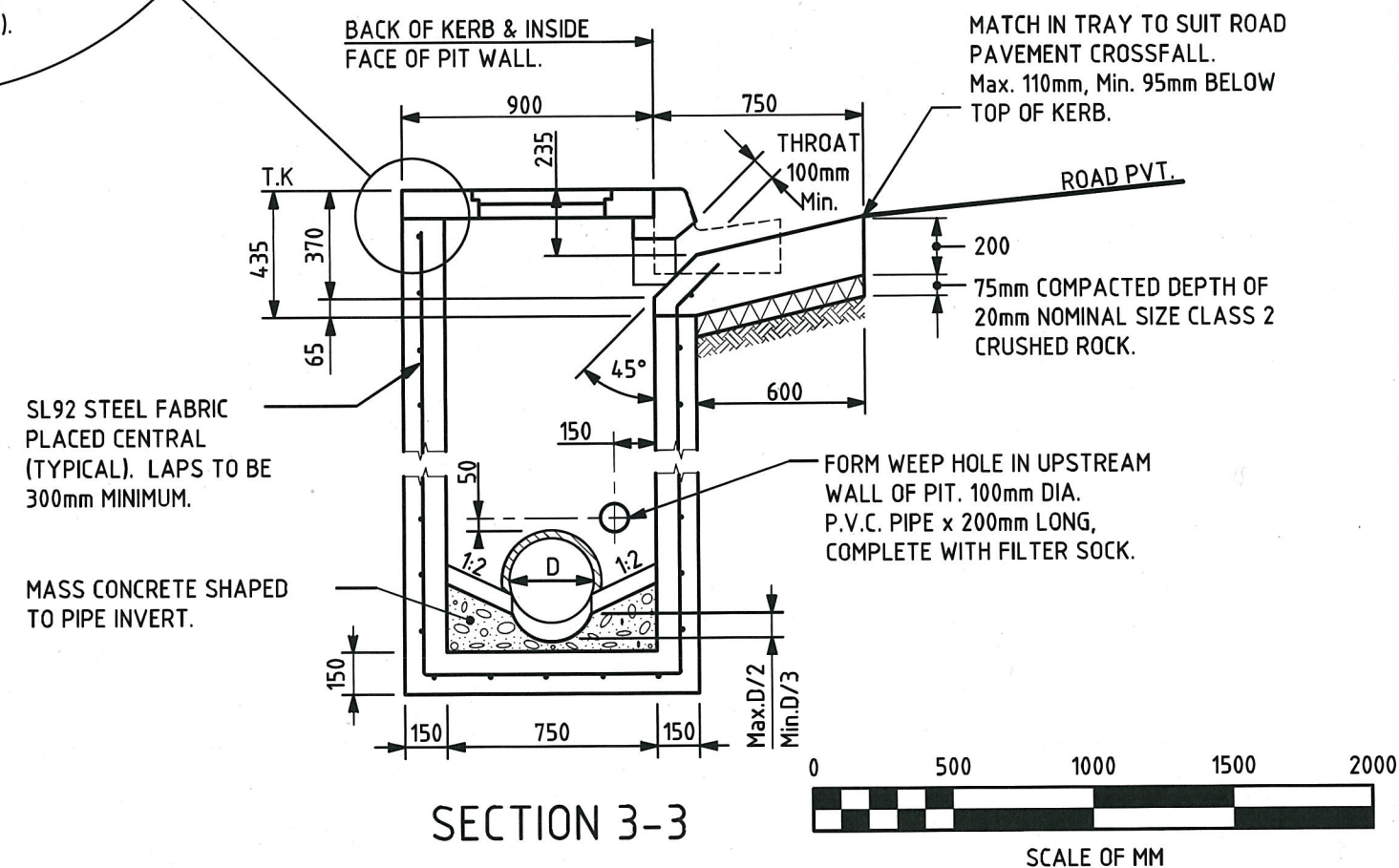


REAR LINTEL DETAIL

(For Pits Greater Than
750mm Standard Width).

NOTES:

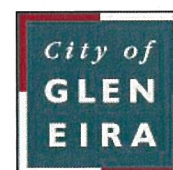
1. WALL THICKNESS AND REINFORCEMENT SHALL APPLY TO ALL PITS UP TO 3000mm DEEP. FOR DEEPER PITS SEE STD-113 AND STD-114.
2. ALL REINFORCEMENT LAPS SHALL BE 300mm LONG.
3. MINIMUM COVER TO REINFORCEMENT SHALL BE 50mm UNLESS OTHERWISE SPECIFIED.
4. ALL REINFORCEMENT SHALL BE SL92 STEEL FABRIC, UNLESS OTHERWISE SPECIFIED.
5. PITS UP TO 2000mm DEEP SHALL BE CAST WITH WALLS AND FLOOR SLABS UNREINFORCED, UNLESS OTHERWISE SPECIFIED.
6. PITS DEEPER THAN 1000mm AND UP TO 3000mm SHALL BE FITTED WITH STEP IRONS. SEE STD-102. PITS DEEPER THAN 3000mm SHALL BE FITTED WITH LADDERS.
7. PIT DIMENSIONS AND REFERENCES TO BACK OF KERB ARE BASED ON STANDARD CONCRETE BARRIER TYPE B1 KERB PROFILE, 150mm KERB HEIGHT. SEE STD-301.
8. FOR PITS OF LENGTH GREATER THAN 1000mm CORBEL ROOF AT REAR AND SIDES USING CAST INSITU DETAIL AS PER REAR LINTEL FOR DOUBLE SIDE ENTRY PIT TYPE S1D. SEE STD-107.




SECTION 3-3

SCALE OF MM

CITY OF GLEN EIRA



Corner Glen Eira and Hawthorn Roads
PO Box 42
Caulfield South Vic 3162
Phone 9524 3333
Fax 9524 3424
E-Mail mail@gleneira.vic.gov.au
Web www.gleneira.vic.gov.au

| | | | |
|----------|---|----------|----------------|
| | Initials | Date | CAD Reference |
| Designed | CAP WORKS | AUG 2009 | STD-106_S1 SEP |
| Drawn | CAP WORKS | AUG 2009 | Reference |
| Checked | | | - |
| Approved |  Dir. Assets & Facilities | | Version |
| | | | Date |
| | | | 16.01.12 |

S1 TYPE SIDE ENTRY PIT
SINGLE

| | | | | | |
|--------|----------|----------|---------|-------|--------|
| SCALE: | AS SHOWN | DRG. NO. | STD-106 | SHEET | 1 OF 1 |
|--------|----------|----------|---------|-------|--------|