

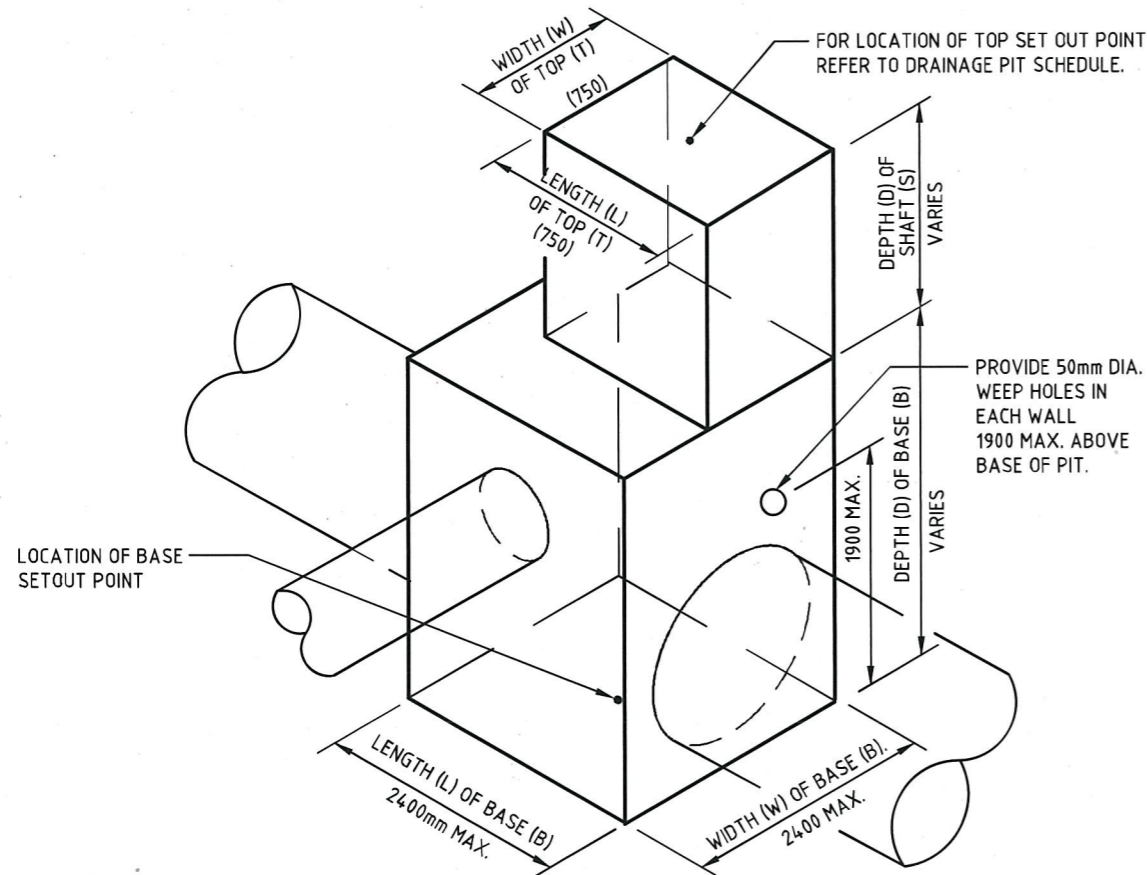
NOTES:

CONCRETE

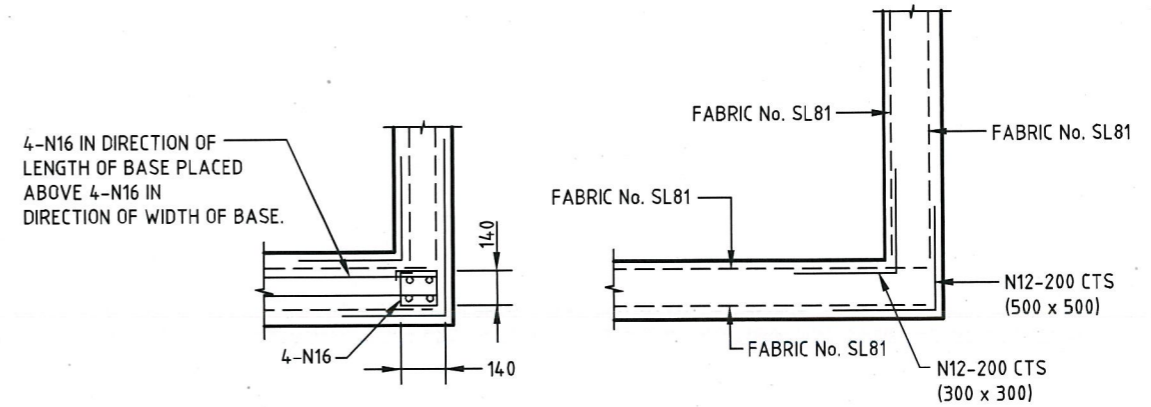
1. CONCRETE STRENGTH GRADE SHALL BE N32 STANDARD STRENGTH CONCRETE OR HIGHER COMPLYING WITH THE REQUIREMENTS OF AS 1379
2. ALL CORNERS SHALL HAVE 20x20mm FILLETS OF CHAMFERS UNLESS NOTED OTHERWISE.

REINFORCEMENT

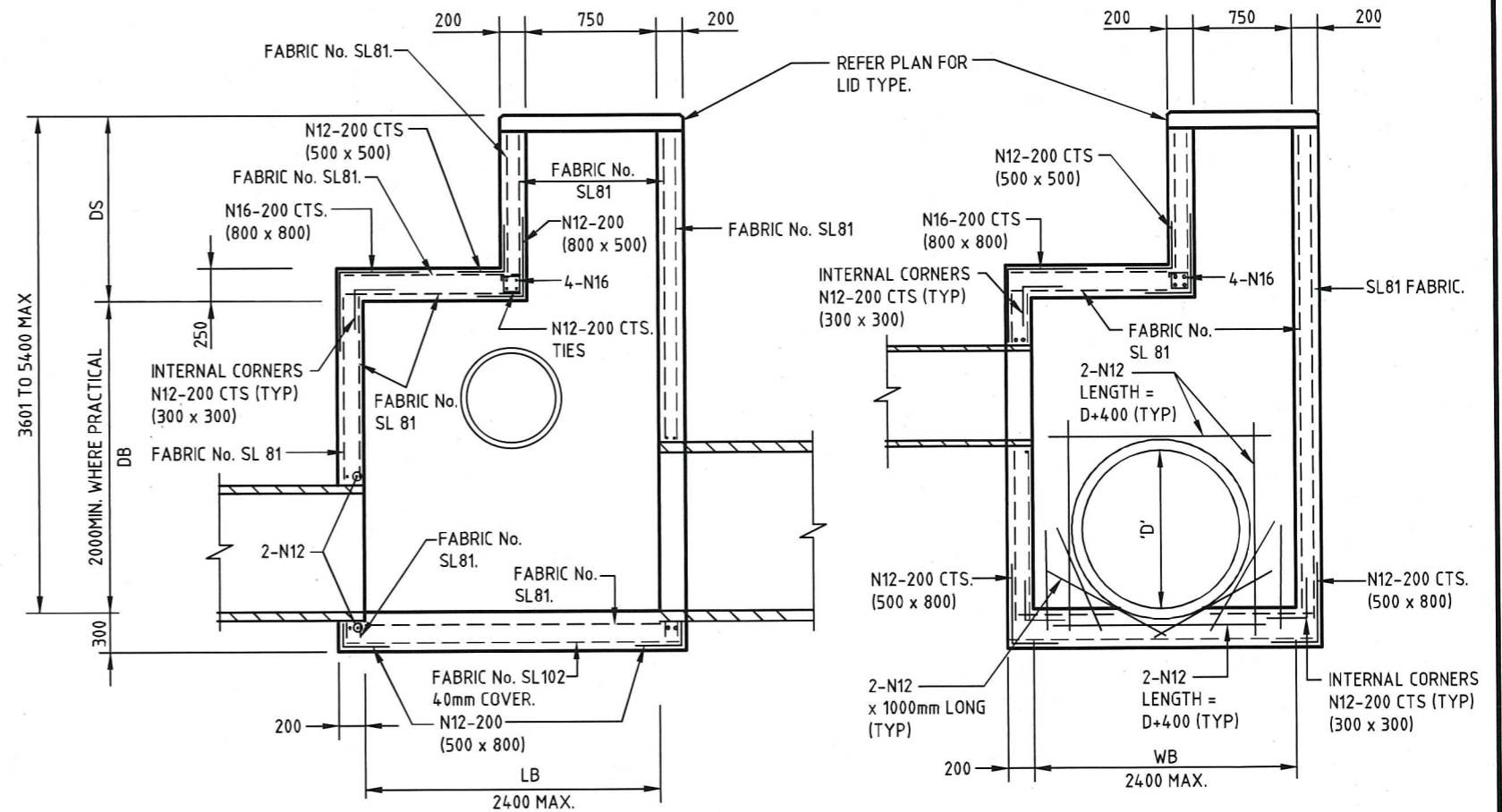
3. COVER - 35mm UNLESS NOTED OTHERWISE
4. SPACING - TAKEN AS EQUAL UNLESS NOTED OTHERWISE
5. GRADE - 500(VN) TO AS/NZS 4671
6. WELDED WIRE REINFORCING FABRIC SHALL COMPLY TO AS/NZS 4671
7. WELDING - SHALL NOT BE PERMITTED UNLESS NOTED OTHERWISE
8. STEP IRONS - FOR STEP IRON DETAIL REFER TO STD-102
9. STEELWORK SHALL BE HOT DIPPED GALVANIZED AFTER FABRICATION IN ACCORDANCE WITH AS/NZS 4680
10. STEP IRONS NOT SHOWN FOR CLARITY



TYPICAL INTERNAL PIT DIMENSIONS

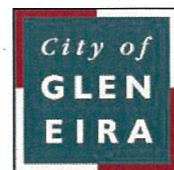


CORNER DETAILS - PLAN VIEW



TYPICAL SECTIONS THROUGH PIT LENGTH & WIDTH

CITY OF GLEN EIRA



Corner Glen Eira and Hawthorn Roads
 PO Box 42
 Caulfield South Vic 3162
 Phone 9524 3333
 Fax 9524 3424
 E-Mail mail@gleneira.vic.gov.au
 Web www.gleneira.vic.gov.au

	Initials	Date	CAD Reference
Designed	HM	NOV 2010	STD-105B_JP(LARGE)
Drawn	HM	NOV 2010	Reference
Checked			-
Approved			Version
			-
			Date
			16.01.12
			Dir. Assets & Facilities

LARGE JUNCTION PIT TYPE B
 2400 x 2400 x 5400mm MAX. DEPTH

SCALE:	AS SHOWN	DRG. NO.	STD-105B	SHEET	1 OF 1
--------	----------	----------	----------	-------	--------