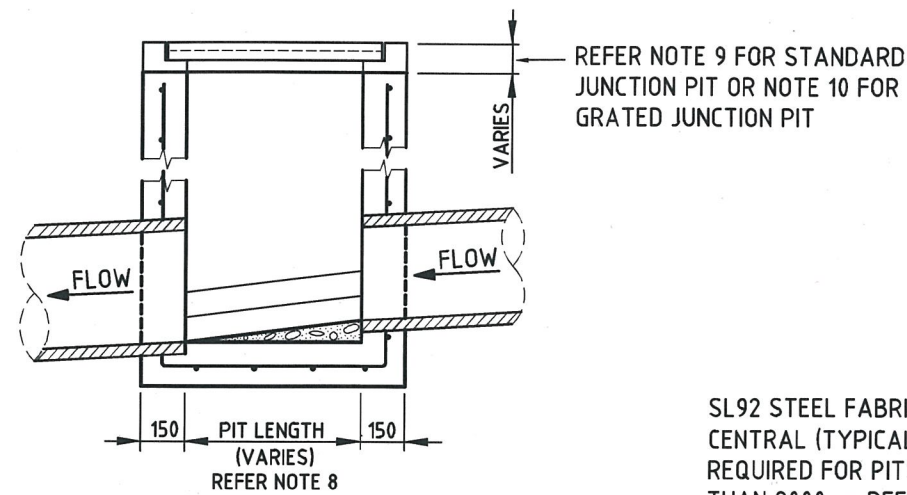
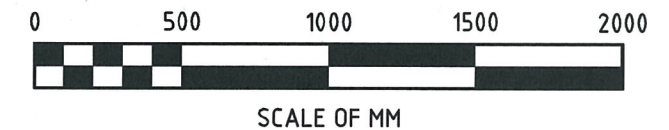


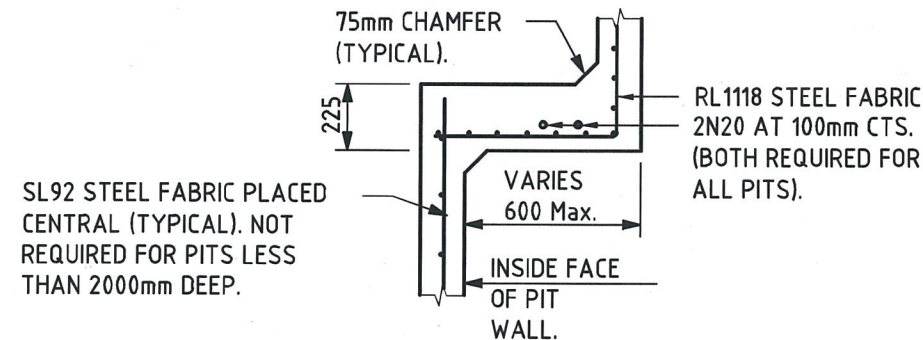
## NOTES:

1. WALL THICKNESS SHALL APPLY TO ALL PITS UP TO 3000mm IN DEPTH. FOR PITS DEEPER THAN 3000mm SEE STD-113 AND STD-114.
2. REINFORCING TO PIT WALLS AND BASE IS NOT REQUIRED FOR PITS LESS THAN 2000mm IN DEPTH UNLESS NOTED OTHERWISE
3. REINFORCING IS REQUIRED TO ALL CORBELS ON PITS AS NOTED ON DETAIL 'B'
4. ALL REINFORCEMENT LAPS SHALL BE 300mm MINIMUM.
5. MINIMUM COVER TO REINFORCEMENT SHALL BE 50mm UNLESS OTHERWISE SPECIFIED.
6. ALL REINFORCEMENT SHALL BE SL92 STEEL FABRIC, UNLESS OTHERWISE SPECIFIED.
7. PITS DEEPER THAN 1000mm AND UP TO 3000mm SHALL BE FITTED WITH STEP IRONS. SEE STD-102. PITS DEEPER THAN 3000mm SHALL BE FITTED WITH LADDERS.
8. PIT DIMENSIONS SHALL BE AS FOLLOWS:
 

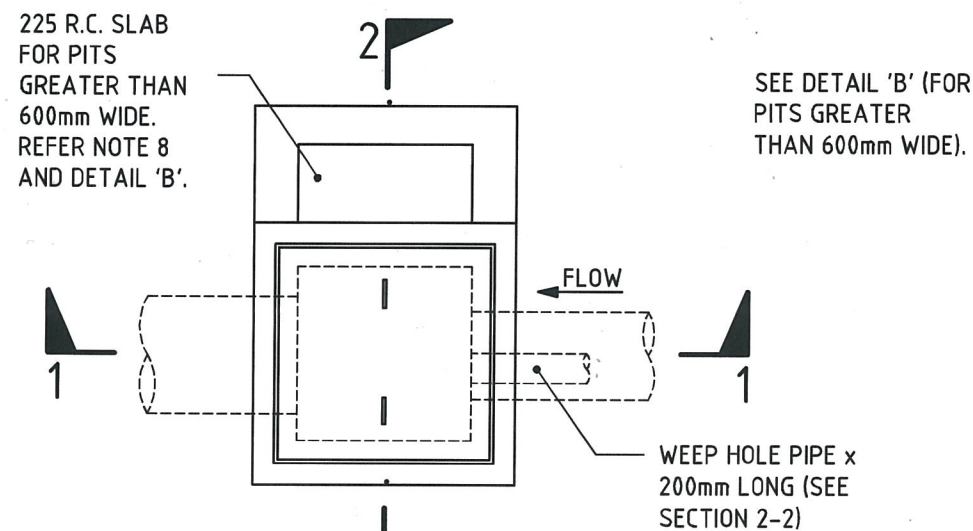
a. LENGTH	FOR PITS UP TO 1000mm DEEP,	L = 600mm
	FOR PITS DEEPER THAN 1000mm,	L = 750mm
b. WIDTH	FOR PIPE DIAMETER UP TO 450mm,	W = 600mm
	FOR PIPE DIAMETER GREATER THAN 450mm,	W = D + 150mm
9. COVERS SHALL BE IN ACCORDANCE WITH AS3996 AND AS FOLLOWS:
  - a. NATURESTRIP AND FOOTPATH AREAS: CLASS A, FACTORY PRODUCED PRECAST CONCRETE COVERS SHALL BE USED.
  - b. OTHER PAVEMENT AREAS: GATIC OR APPROVED EQUIVALENT STRENGTH COVERS SHALL BE USED AS SPECIFIED BELOW:
    - CLASS D: ROAD PAVEMENT IN MAJOR ROAD DRIVE CROSSINGS FOR SERVICE AND FIRE STATIONS.
    - CLASS C: ROAD PAVEMENT IN LOCAL STREET AND LANEWAY. DRIVE CROSSINGS FOR COMMERCIAL AND INDUSTRIAL USE.
    - CLASS B: DRIVE CROSSINGS FOR RESIDENTIAL USE.
 COVERS AND FRAMES ARE TO BE MANUFACTURED FROM NOT LESS THAN GRADE 12 GREY CAST IRON IN ACCORDANCE WITH AS1830.
10. GRATES SHALL BE IN ACCORDANCE WITH AS3996 AND GATIC OR APPROVED EQUIVALENT STRENGTH. GRATES AND FRAMES ARE TO BE MANUFACTURED FROM NOT LESS THAN GRADE 12 GREY CAST IRON IN ACCORDANCE WITH AS1830. REFER TO PROJECT DRAWINGS FOR LOAD CLASS.



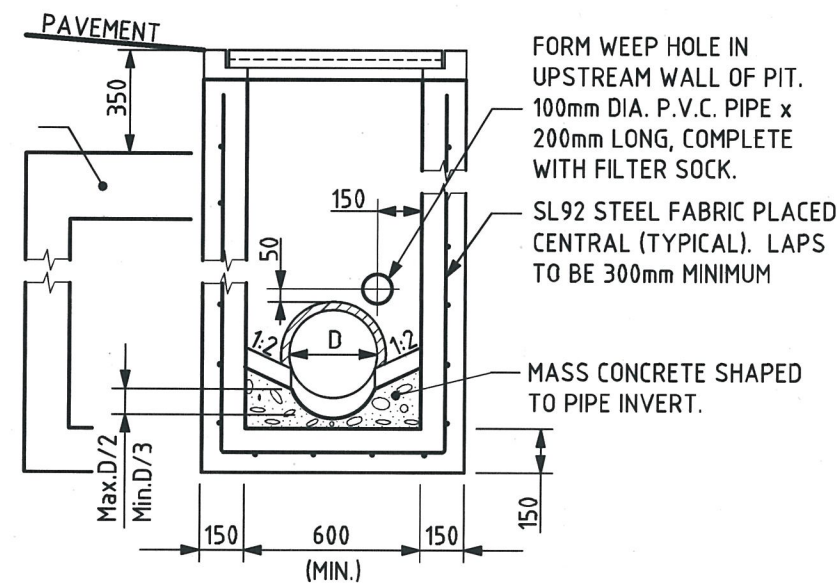
SECTION 1-1



DETAIL 'B'  
(FOR PITS GREATER THAN 600mm WIDE)

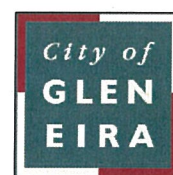


PLAN



SECTION 2-2

## GLEN EIRA CITY COUNCIL



Corner Glen Eira and Hawthorn Roads  
PO Box 42  
Caulfield South Vic 3162  
Phone 9524 3333  
Fax 9524 3424  
E-Mail [mail@gleneira.vic.gov.au](mailto:mail@gleneira.vic.gov.au)  
Web [www.gleneira.vic.gov.au](http://www.gleneira.vic.gov.au)

	Initials	Date	CAD Reference
Designed	CAP WORKS	AUG 2009	STD-105_JP
Drawn	CAP WORKS	AUG 2009	Reference
Checked			-
Approved	<i>Paul Wilk</i> 23-6-14		Version
Dir. Assets & Facilities	Date		Date

## JUNCTION PITS (COVER, GRATE, V-GRATE & DEPRESSED GRATE)

SCALE:	AS SHOWN	DRG. NO.	STD-105	SHEET	1 OF 1
--------	----------	----------	---------	-------	--------