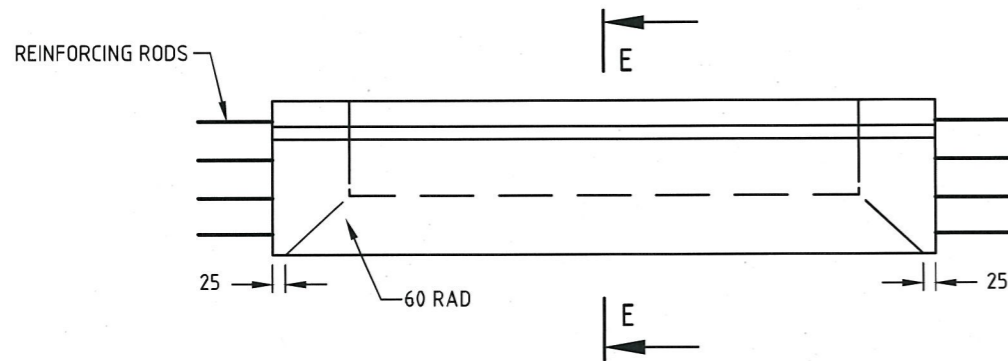
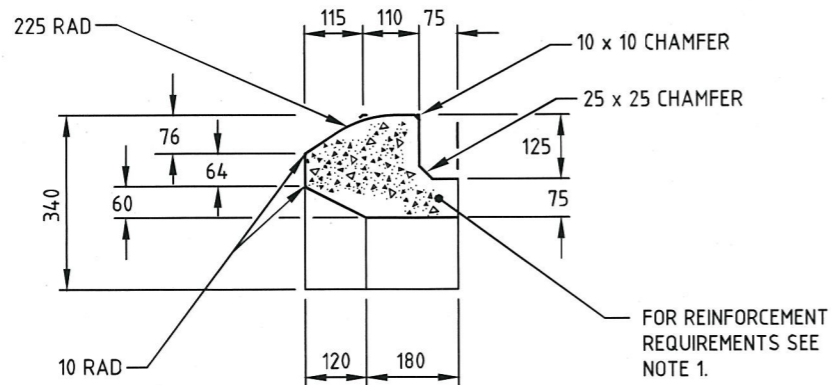


ELEVATION

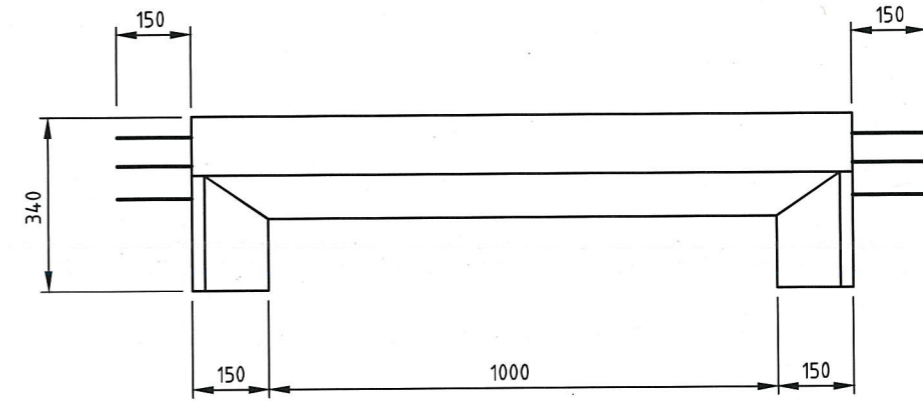


PLAN

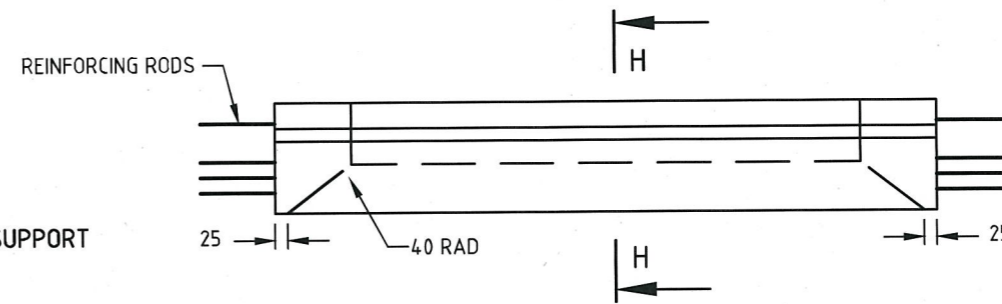


SECTION E-E

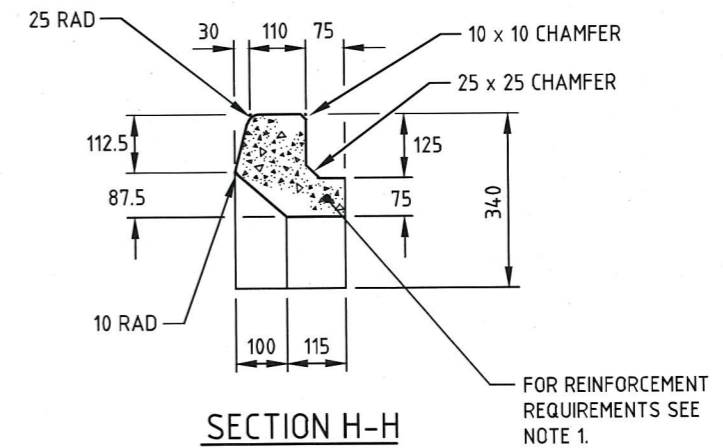
SM TYPE LINTELS



ELEVATION



PLAN



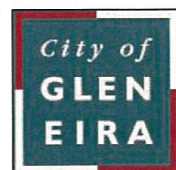
SECTION H-H

B TYPE LINTELS

NOTES

1. STANDARD LINTELS ARE REQUIRED TO SUPPORT A TEST LOAD OF 100 kN.
2. STEEL REINFORCEMENT SHALL COMPLY WITH SECTION 611 OF VICROADS SPECIFICATION.
3. CONCRETE SHALL BE CONCRETE GRADE N40 OR HIGHER COMPLYING WITH AS 1379. EXPOSURE CLASSIFICATIONS UP TO AND INCLUDING B1.
4. MINIMUM CLEAR COVER TO REINFORCEMENT 25 mm FOR PRECAST CONCRETE UNITS.

CITY OF GLEN EIRA



Corner Glen Eira and Hawthorn Roads
 PO Box 42
 Caulfield South Vic 3162
 Phone 9524 3333
 Fax 9524 3424
 E-Mail mail@gleneira.vic.gov.au
 Web www.gleneira.vic.gov.au

	Initials	Date	CAD Reference
Designed	CAP WORKS	AUG 2009	STD-104_LINTELS
Drawn	CAP WORKS	AUG 2009	Reference
Checked			VicRoads SD 1061
Approved	<i>[Signature]</i>		Version
Dir. Assets & Facilities	Date	16-01-12	-

PRECAST CONCRETE LINTELS

SCALE:	AS SHOWN	DRG. NO.	STD-104	SHEET	1 OF 1
--------	----------	----------	---------	-------	--------