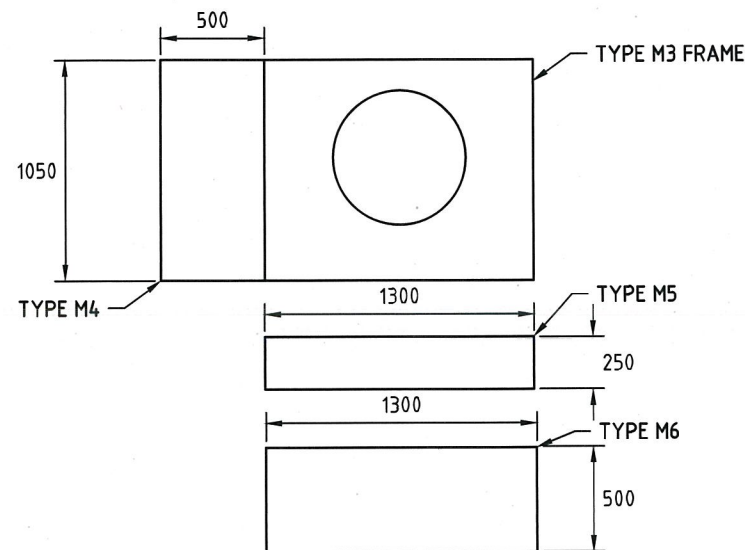
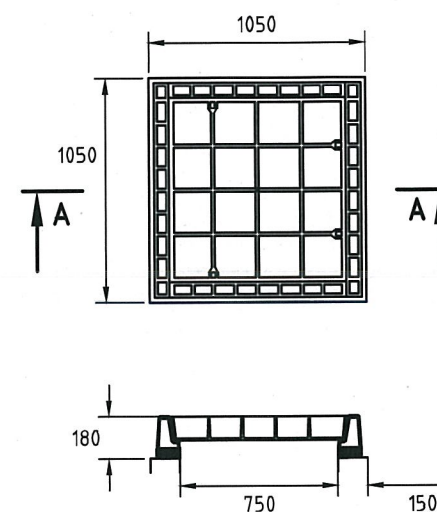


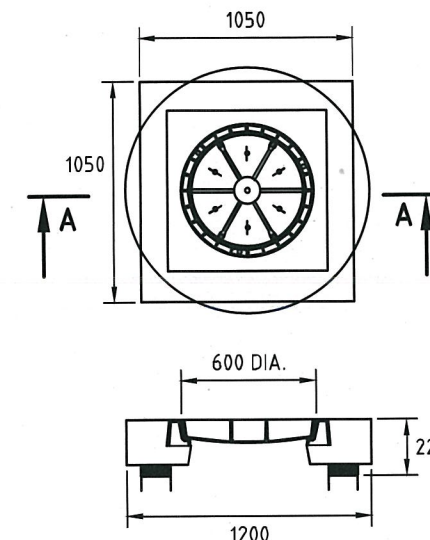
SECTION A-A
(LID NOT SHOWN)
TYPE M3
MEDIUM DUTY



COVER EXTENSIONS TYPES M4, M5 & M6
MEDIUM DUTY



SECTION A-A
TYPE H1
HEAVY DUTY
(GATIC H212 OR EQUIVALENT)



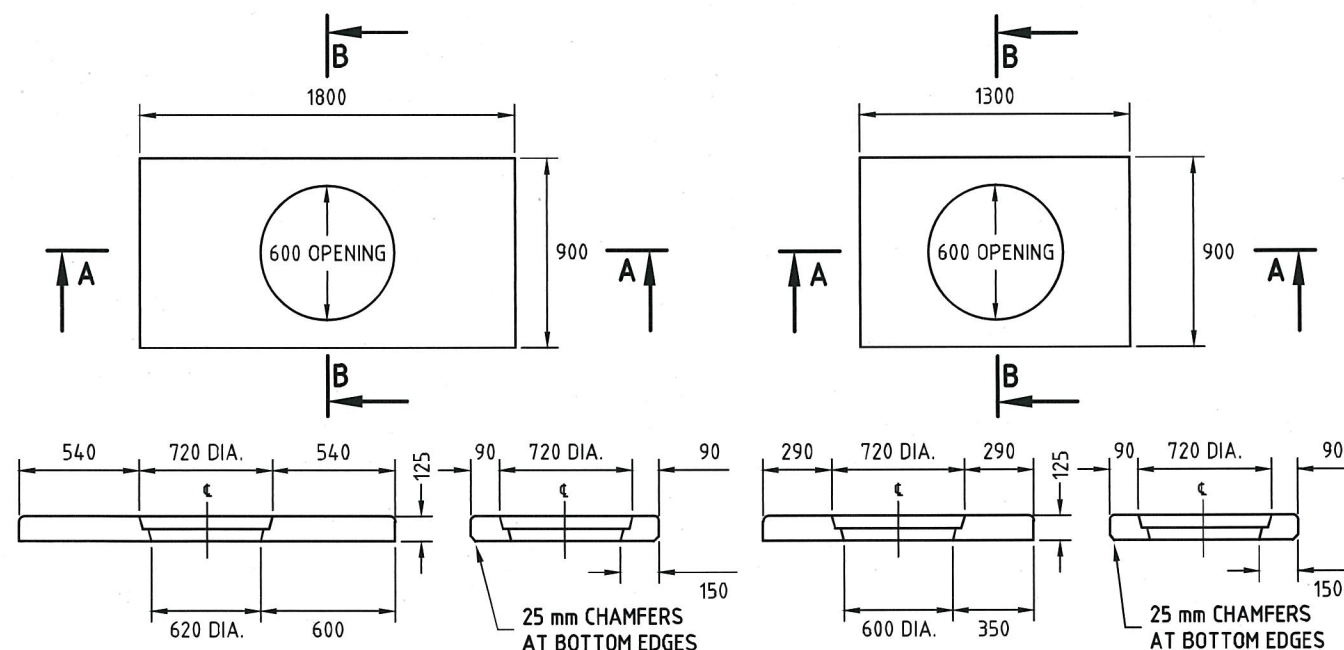
SECTION A-A
TYPE H2
HEAVY DUTY
(GATIC H212 OR EQUIVALENT)

"CLASS C"

JUNCTION PIT COVERS

"CLASS D"

(GATIC H212 OR EQUIVALENT)



SECTION A-A
TYPE M1
MEDIUM DUTY

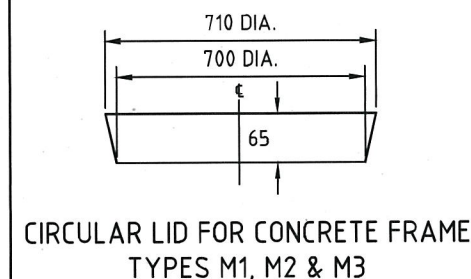
SECTION B-B

SECTION A-A

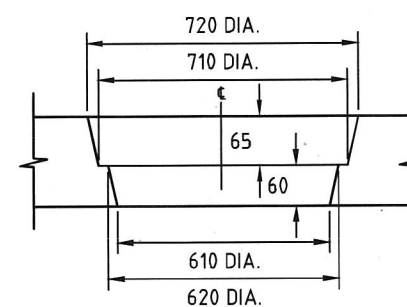
SECTION B-B
TYPE M2
MEDIUM DUTY

(LID NOT SHOWN)

SIDE ENTRY PIT ACCESS COVERS



CIRCULAR LID FOR CONCRETE FRAME
TYPES M1, M2 & M3



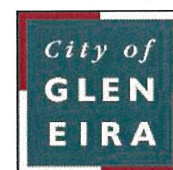
OPENING FOR CONCRETE FRAME
TYPES M1, M2 & M3

NOTES:

- HEAVY DUTY COVERS SHALL BE USED IN TRAFFIC LANES. MEDIUM DENSITY COVERS ARE FOR SHOULDERS AND OFF ROAD USE.
- COVERS ARE REQUIRED TO SUPPORT THE FOLLOWING TEST LOADS IN ACCORDANCE WITH VICROADS' "INTERIM TEST METHOD FOR TESTING PIT COVERS, LINTELS AND LIDS".
HEAVY DUTY : - LID AND FRAME, INCLUDING CONCRETE SURROUND - 210kN
MEDIUM DUTY : - CONCRETE FRAME - 100kN
- CONCRETE COVER EXTENSION - 100kN
- CONCRETE LID - 60 kN
- STEEL REINFORCEMENT SHALL COMPLY WITH SECTION 611 OF VICROADS SPECIFICATION.
- CONCRETE SHALL BE CONCRETE GRADE N40 COMPLYING WITH SECTION 610 OF VICROADS SPECIFICATION. EXPOSURE CLASSIFICATIONS UP TO AND INCLUDING B1.
- MINIMUM CLEAR COVER TO REINFORCEMENT 25 mm FOR PRECAST CONCRETE UNITS.
- ALL LIDS SHALL HAVE WEIGHT AND CAPACITY IMPRINTS. FOR CONCRETE LIDS, THE LETTERING SIZE SHALL BE 25 mm WITH THE WORD 'DRAIN' IMPRINTED ABOVE WEIGHT AND CAPACITY.
- ALL LIDS SHALL FIT FLUSH AND HAVE PROVISION FOR LIFTING. CONCRETE LIDS SHALL HAVE TWO LIFTING HOLES OF 25 x 50 MIN.
- ANCHORAGE MUST BE PROVIDED TO ENSURE THAT FRAMES AND LIDS DO NOT COME LOOSE UNDER TRAFFIC.
- SPECIAL COVERS ARE REQUIRED FOR SOME PITS (eg. GRATED SIDE ENTRY PITS).
- ALL EXPOSED EDGES OF CONCRETE FRAMES AND LIDS SHALL BE ROUNDED OR CHAMFERED. (NO FINS OR CHIPS.)
- CONCRETE FRAMES ARE TO BE SET ON 5 mm MORTAR.
- JUNCTION PIT COVERS LARGER THAN TYPE M3 MAY BE CONSTRUCTED AS AN INTEGRAL UNIT OR EXTENDED USING UNITS M4, M5 AND M6 AS SHOWN BELOW. THE EXTENSION UNITS SHALL FIT FLUSH WITH THE TYPE M3 COVER.

JUNCTION PIT SIZE (INTERNAL DIMENSIONS)	COMBINATION OF COVER TYPES
750 x 750	M3, H1 OR H2
750 x 1000	M3
750 x 1500	M3 + M4
750 x 2000	M3 + 2 x M4
1000 x 1000	M3 + M5
1000 x 1500	M3 + M5 + M6
1000 x 2000	M3 + M5 + 2 x M6

CITY OF GLEN EIRA



Corner Glen Eira and Hawthorn Roads
PO Box 42
Caulfield South Vic 3162
Phone 9524 3333
Fax 9524 3424
E-Mail mail@gleneira.vic.gov.au
Web www.gleneira.vic.gov.au

	Initials	Date
Designed	CAP WORKS	AUG 2009
Drawn	CAP WORKS	AUG 2009
Checked		
Approved	<i>[Signature]</i>	
Dir. Assets & Facilities		Date

CAD Reference	STD-103_PIT COVERS
Reference	VicRoads SD 1051
Version	-
Date	16.01.12

PIT COVERS

SCALE:	AS SHOWN	DRG. NO.	STD-103	SHEET	1 OF 1
--------	----------	----------	---------	-------	--------