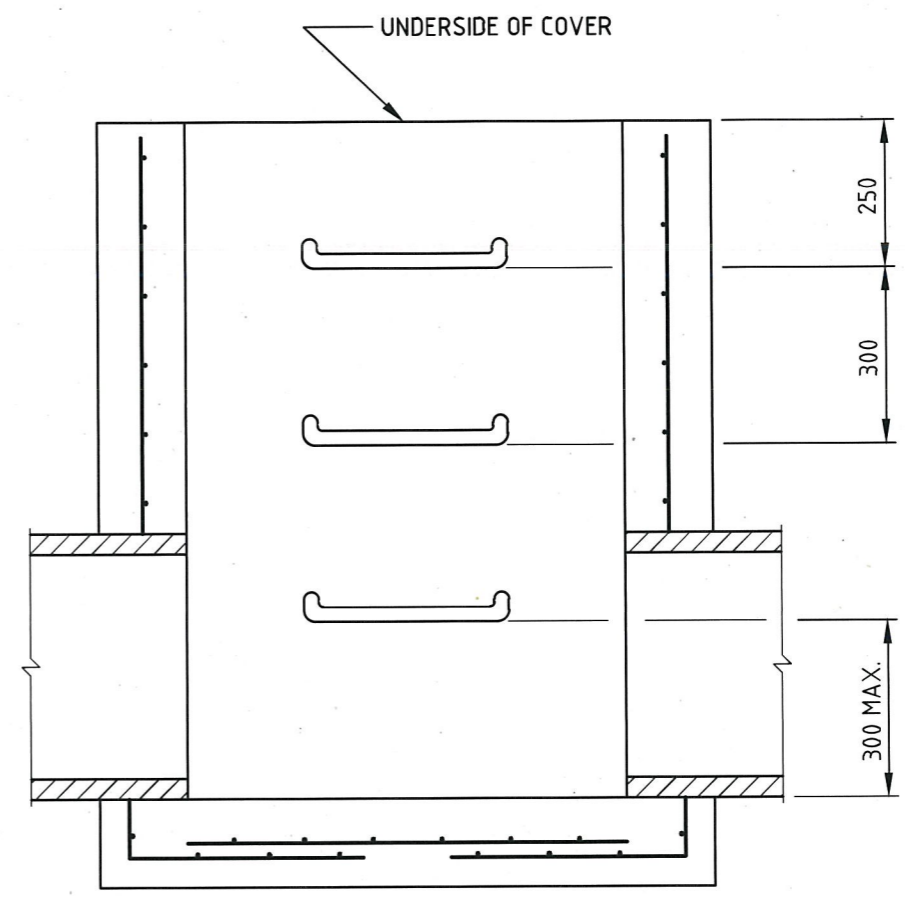
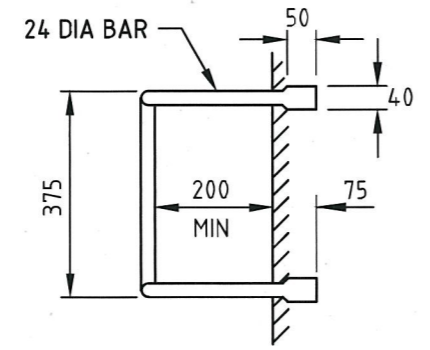
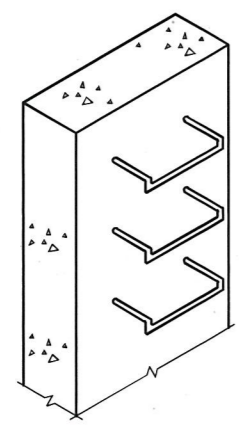
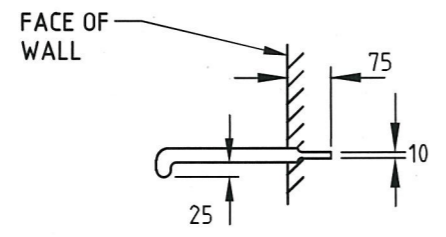


PLAN



SECTION A-A



STEP IRON DETAILS

NOTES:

1. PITS DEEPER THAN 1000 SHALL BE FITTED WITH STEP IRONS.
2. STEP IRONS SHALL BE LOCATED:
 - DIRECTLY BELOW THE OPENING IN THE COVER.
 - DESIRABLY ON A WALL WITHOUT PIPE OPENINGS.
 - DESIRABLY ON ONE OF THE LONG SIDES OF THE PIT.
3. STEEL FOR STEP-IRONS SHALL BE STRUCTURAL GRADE 250 TO AS3679 PART 1.
4. STEP IRONS SHALL HAVE SHARP EDGES ROUNDED AND HOT DIP GALVANIZED AFTER FABRICATION TO AS/NZS 4680.
5. PROPRIETARY STEPS SUCH AS THE GATIC 373 PM POLYPROPYLENE STEPS (OR APPROVED ALTERNATIVE) MAY BE USED. THESE SHALL BE INSTALLED ACCORDING TO THE MANUFACTURERS INSTRUCTIONS.
6. FOR PRECAST PITS, STEP IRONS SHALL BE LOAD TESTED TO AS4198/1994.

CITY OF GLEN EIRA



Corner Glen Eira and Hawthorn Roads
 PO Box 42
 Caulfield South Vic 3162
 Phone 9524 3333
 Fax 9524 3424
 E-Mail mail@gleneira.vic.gov.au
 Web www.gleneira.vic.gov.au

	Initials	Date	CAD Reference
Designed	CAP WORKS	AUG 2009	STD-102_STEP IRONS
Drawn	CAP WORKS	AUG 2009	Reference
Checked			VicRoads SD 1041 C
Approved	<i>[Signature]</i>		Version
Dir. Assets & Facilities		Date	16.01.12

STEP IRONS			
SCALE:	AS SHOWN	DRG. NO.	STD-102
SHEET	1 OF 1		