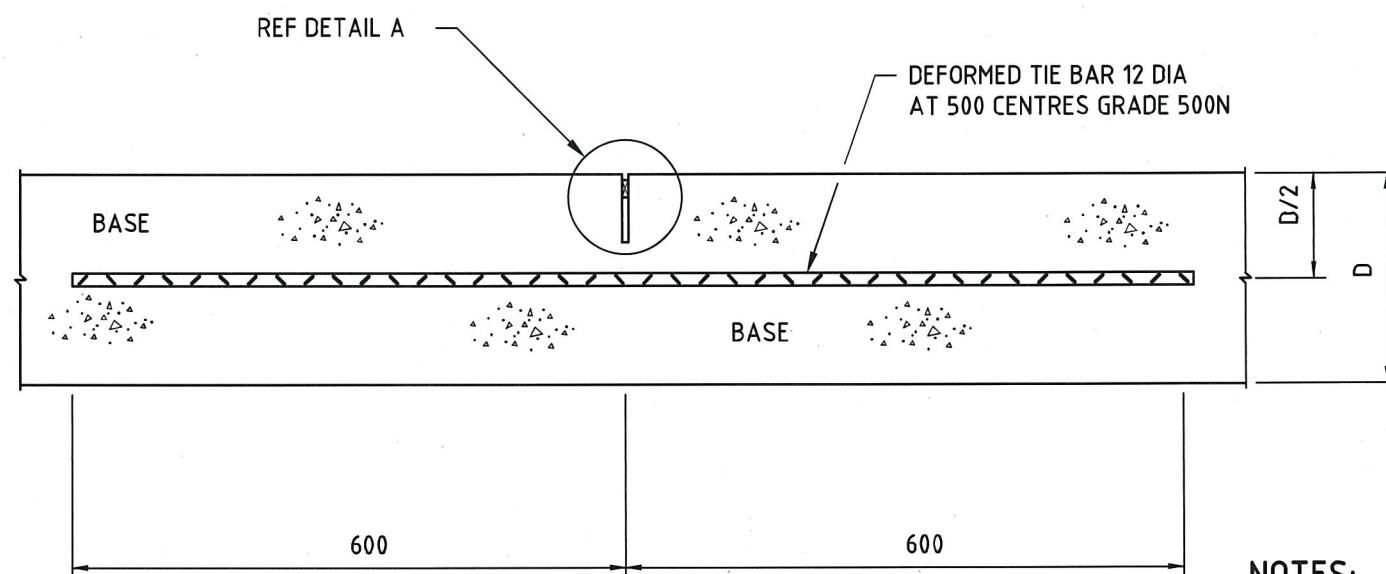
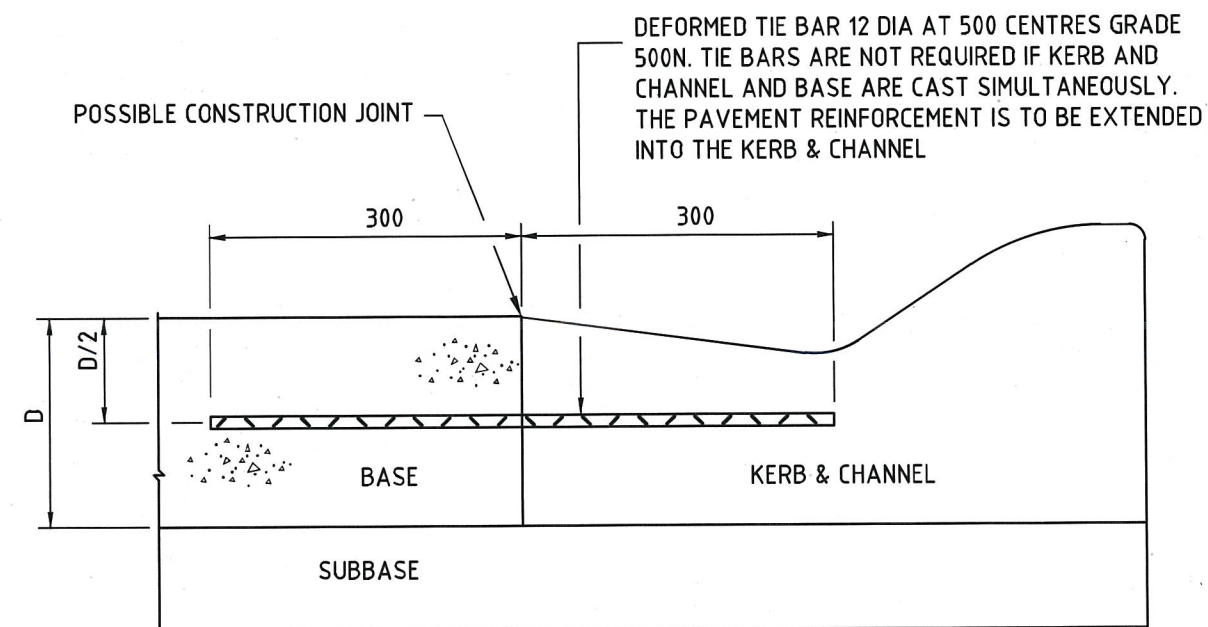


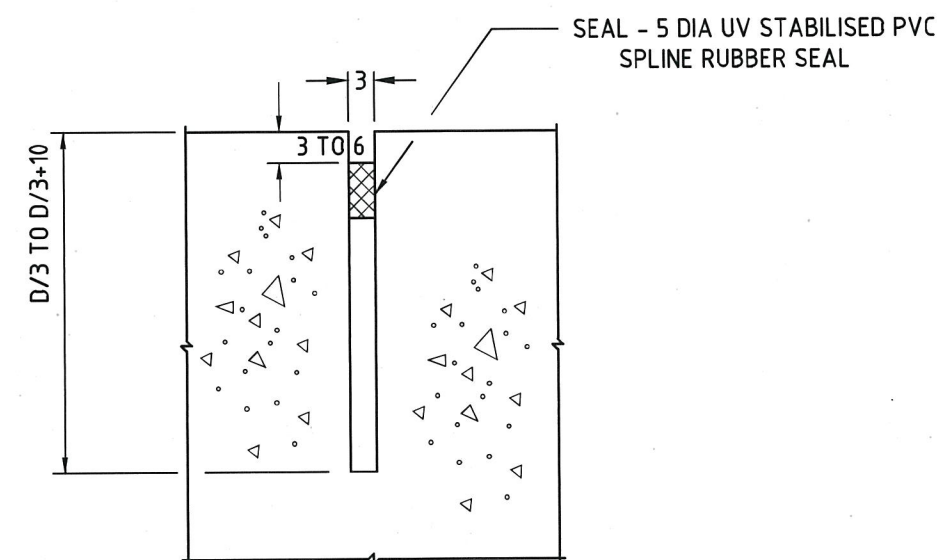
CONSTRUCTION JOINT



SAWN LONGITUDINAL JOINT



KERB AND CHANNEL TIED JOINT

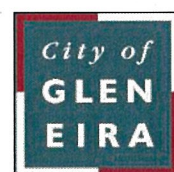


DETAIL A

NOTES:

1. TIE BAR SHALL NOT BE PLACED WITHIN 500mm OF A TRANSVERSE CONTRACTION JOINT.
2. REINFORCEMENT FOR JOINTED AND CONTINUOUSLY REINFORCED PAVEMENTS IS NOT SHOWN. REFER TO SCHEDULE OF DETAILS.
3. SUBBASE AND BASE LONGITUDINAL JOINTS SHALL BE OFFSET BY NOT LESS THAN 250mm BUT NOT MORE THAN 300mm.
4. DIMENSIONS SHOWN ARE APPLICABLE FOR STEEL FIBRE REINFORCED CONCRETE.
5. KERB & CHANNEL TIED JOINT; IF KERB & CHANNEL AND BASE ARE CAST SIMULTANEOUSLY, TIE BARS ARE NOT REQUIRED BETWEEN THEM. THE PAVEMENT REINFORCEMENT SHALL BE EXTENDED INTO THE KERB & CHANNEL AND THE BACK OF KERB IS THE EDGE PAVEMENT

**CITY OF GLEN EIRA**



Corner Glen Eira and Hawthorn Roads  
PO Box 42  
Caulfield South Vic 3162  
Phone 9524 3333  
Fax 9524 3424  
E-Mail [mail@gleneira.vic.gov.au](mailto:mail@gleneira.vic.gov.au)  
Web [www.gleneira.vic.gov.au](http://www.gleneira.vic.gov.au)

	Initials	Date	CAD Reference
Designed	CAP WORKS	AUG 2009	STD-411_CP-LONG
Drawn	CAP WORKS	AUG 2009	Reference
Checked			VicRoads SD-541B
Approved	<i>Paul W. W.</i>		Version
Dir. Assets & Facilities	Date	16.01.12.	

**CONCRETE PAVEMENT (ALL TYPES)  
LONGITUDINAL TIED JOINTS**

SCALE:	AS SHOWN	DRG. NO.	STD-411	SHEET	1 OF 1
--------	----------	----------	---------	-------	--------