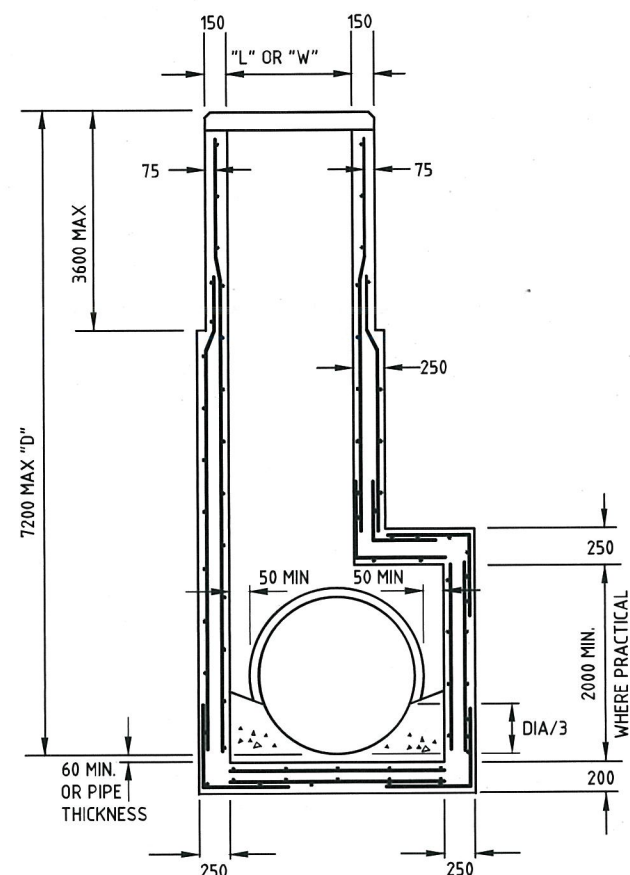


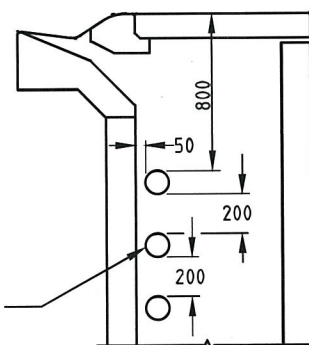
PITS 7201 TO 10800 DEPTH

REINFORCEMENT DETAILS

PIT LENGTH "L"	REINFORCEMENT
UP TO 1200	SL92
1201 TO 1800	RL918
1801 TO 2400	RL1218

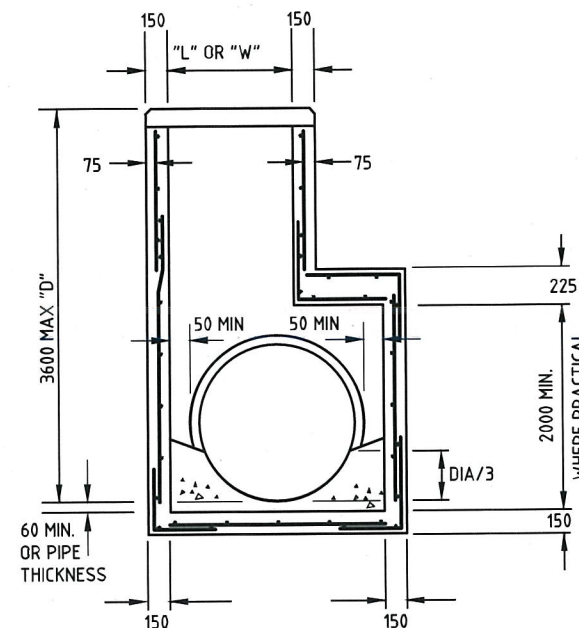


PITS 3601 TO 7200 DEPTH

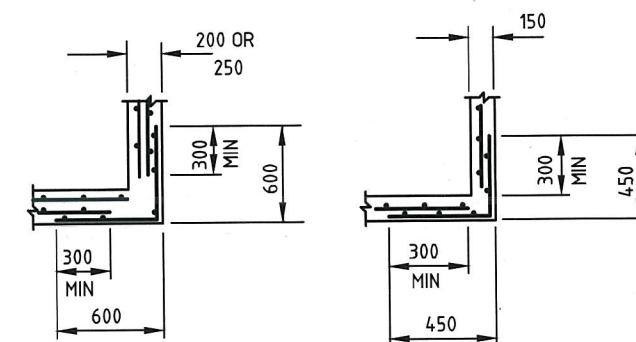


FORM THREE 120 DIA HOLES IN SIDE WALLS TO ACCOMMODATE SUBSURFACE DRAINS IN BOTH SIDES.

PRECAST PIT



PITS UP TO 3600 DEPTH



CORNER DETAILS
PLAN VIEW

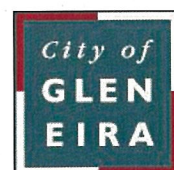
NOTES:

1. MINIMUM PIT SIZES

DEPTH	INTERNAL DIMENSIONS	
	PITS IN TRAFFIC LANES	PITS IN OTHER LOCATIONS
0 - 1200	750 x 750	750 x 750
1201 UPWARDS	750 x 750	750 x 1000

- PITS WITH HAUNCHING IN TWO DIRECTIONS REQUIRE SPECIAL STRUCTURAL DESIGN. THE STANDARD DETAILS DO NOT APPLY.
- FOR DETAILS OF SPECIFIC PITS REFER TO PIT SCHEDULE.
- PIT REINFORCEMENT DETAILS ARE SHOWN IN TABLE. FABRIC IN SHAFT SHALL HAVE THE MAIN BARS POSITIONED HORIZONTALLY. LAPS TO BE 300 MIN. CLEAR COVER TO BE 50 MIN. CORNER RETURN REINFORCEMENT MAY BE FABRIC OR EQUIVALENT BARS. BARS GRADE 500N & FABRICS TO COMPLY WITH AS/NZS 4671. CONCRETE SHALL BE NORMAL CLASS N32 STANDARD STRENGTH GRADE OR HIGHER COMPLYING WITH THE REQUIREMENTS OF AS 1379. EXPOSURE CLASSIFICATIONS UP TO AND INCLUDING B1.
- PITS DEEPER THAN 1000 SHALL BE FITTED WITH STEP IRONS, REFER STD-102.
- FOR TOP OF PIT DETAILS, REFER TO PIT SCHEDULE AND RELEVANT STANDARD DRAWINGS.
- PRECAST UNITS MAY BE CONSTRUCTED TO THE MANUFACTURER'S DETAILS. DESIGN SHALL COMPLY WITH THE AS 5100 BRIDGE DESIGN AND THE FOLLOWING ADDITIONAL REQUIREMENTS:
 - COMBINED FACTORED LATERAL PRESSURE AT ANY POINT AT THE ULTIMATE LIMIT STATE SHALL BE NOT LESS THAN 25 kPa.
 - ADEQUATE DRAINAGE SHALL BE PROVIDED TO PIT WALLS TO AVOID HYDROSTATIC PRESSURE.
 - VERTICAL LOAD 210 kN APPLIED ANYWHERE ON PIT.
 - MINIMUM REINFORCEMENT AREA SHALL BE 150mm²/m.
 - CONCRETE SHALL BE NORMAL CLASS N32 STANDARD STRENGTH GRADE OR HIGHER COMPLYING WITH THE REQUIREMENTS OF AS 1379. EXPOSURE CLASSIFICATIONS UP TO AND INCLUDING B1.
- SUBSURFACE DRAIN HOLES TO BE SEALED IF NOT USED.

CITY OF GLEN EIRA



Corner Glen Eira and Hawthorn Roads
PO Box 42
Caulfield South Vic 3162
Phone 9524 3333
Fax 9524 3424
E-Mail mail@gleneira.vic.gov.au
Web www.gleneira.vic.gov.au

	Initials	Date	CAD Reference
Designed	CAP WORKS	AUG 2009	STD-114_HAUNCHED PITS
Drawn	CAP WORKS	AUG 2009	Reference
Checked			VicRoads SD 1021 D
Approved	<i>Paul Wilks</i>		Version
Dir. Assets & Facilities	Date	16-01-12	

HAUNCHED PITS

SCALE:	AS SHOWN	DRG. NO.	STD-114	SHEET	1 OF 1
--------	----------	----------	---------	-------	--------