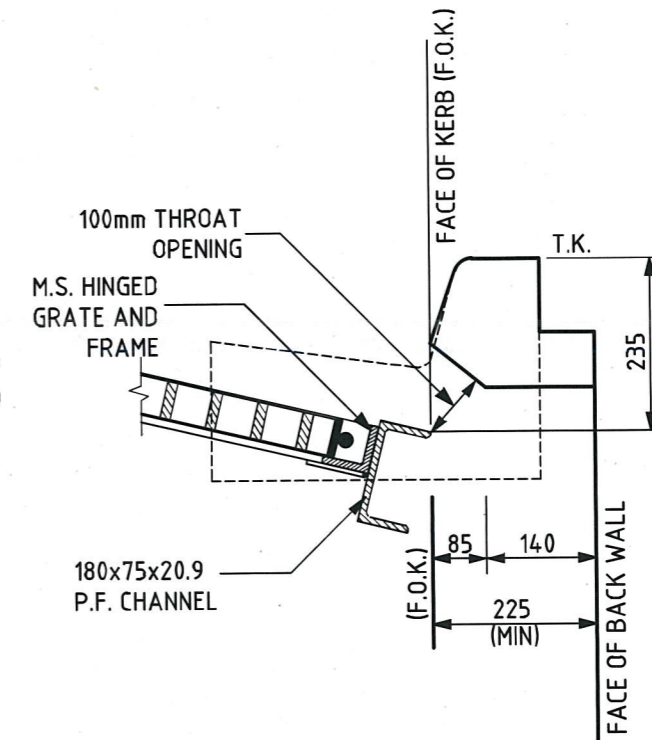


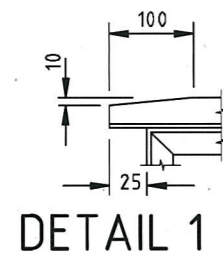
PLAN

NOTES:

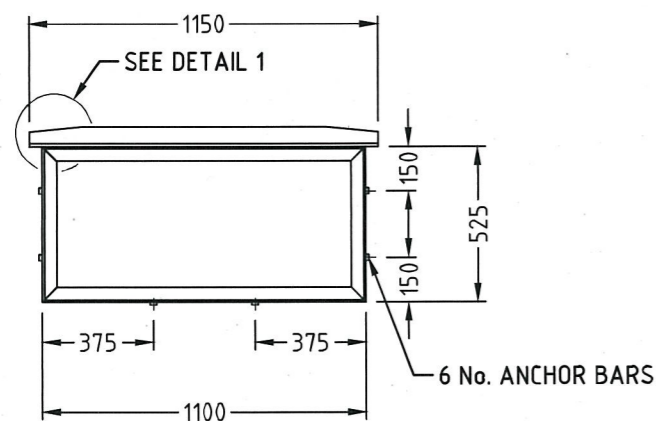
1. HAUNCHING MAY BE REQUIRED FOR PIPES OVER 450 DIAMETER. REFER TO PIT SCHEDULE FOR SIZES OF SPECIFIC PITS. PITS WITH HAUNCHING IN TWO DIRECTIONS REQUIRE SPECIAL STRUCTURAL DESIGN.
2. PIT REINFORCEMENT - SL92. LAPS TO BE 300 MINIMUM. CLEAR COVER TO BE 50 MINIMUM. CORNER RETURN REINFORCEMENT MAY BE FABRIC OR EQUIVALENT BARS. BARS GRADE D500N & FABRICS TO COMPLY WITH AS/NZS 4671. CONCRETE SHALL BE NORMAL-CLASS N32 STANDARD STRENGTH GRADE OR HIGHER COMPLYING WITH THE REQUIREMENTS OF AS 1379. EXPOSURE CLASSIFICATIONS UP TO AND INCLUDING B1.
3. PITS DEEPER THAN 1000 SHALL BE FITTED WITH STEP IRONS. REFER TO STD-102.
4. CONCRETE LINTEL IS REQUIRED TO SUPPORT A TEST LOAD OF 100 kN IN ACCORDANCE WITH VICROADS' "INTERIM TEST METHOD FOR TEST LOADING PIT COVERS, LINTELS AND LIDS."
5. PRECAST UNITS MAY BE CONSTRUCTED TO THE MANUFACTURER'S DETAILS. THE DESIGN SHALL COMPLY WITH THE AS 5100 BRIDGE DESIGN AND THE FOLLOWING ADDITIONAL REQUIREMENTS:
  - a. COMBINED FACTORED LATERAL PRESSURE AT ANY POINT AT THE ULTIMATE LIMIT STATE SHALL BE NOT LESS THAN 25 kPa.
  - b. ADEQUATE DRAINAGE SHALL BE PROVIDED TO PIT WALLS TO AVOID HYDROSTATIC PRESSURE.
  - c. VERTICAL LOAD 210 kN APPLIED ANYWHERE ON PIT.
  - d. MINIMUM REINFORCEMENT AREA SHALL BE 150 mm<sup>2</sup> /m.
  - e. CONCRETE SHALL BE NORMAL-CLASS N32 STANDARD STRENGTH GRADE OR HIGHER COMPLYING WITH THE REQUIREMENTS OF AS 1379. EXPOSURE CLASSIFICATIONS UP TO AND INCLUDING B1.
6. GRATE FRAME SHALL BE CONSTRUCTED FROM 75x50x8 MS ANGLE. EACH CORNER SHALL BE CHAMFERED ON UNDERSIDE OF HORIZONTAL LEG AND ON INSIDE OF VERTICAL LEG BEFORE WELDING WITH SINGLE V BUTT WELD. FRAME TO BE WELDED TO 125 X 65 13.4kg/m TF CHANNEL.
7. BOTH GRATE AND GRATE FRAME SHALL BE HOT DIP GALVANIZED TO AS 1650 UNLESS SPECIFIED OTHERWISE.
8. PRECAST CONCRETE LINTELS IN ACCORDANCE WITH GECC STANDARD DRAWING STD-104.



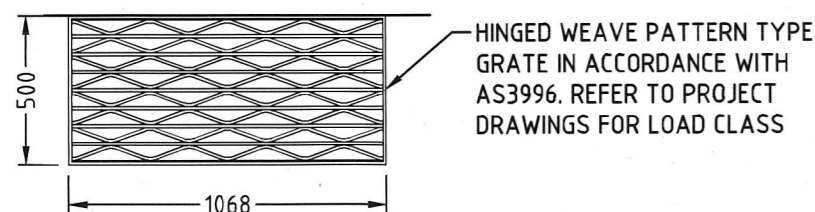
SECTION THROUGH GRATE



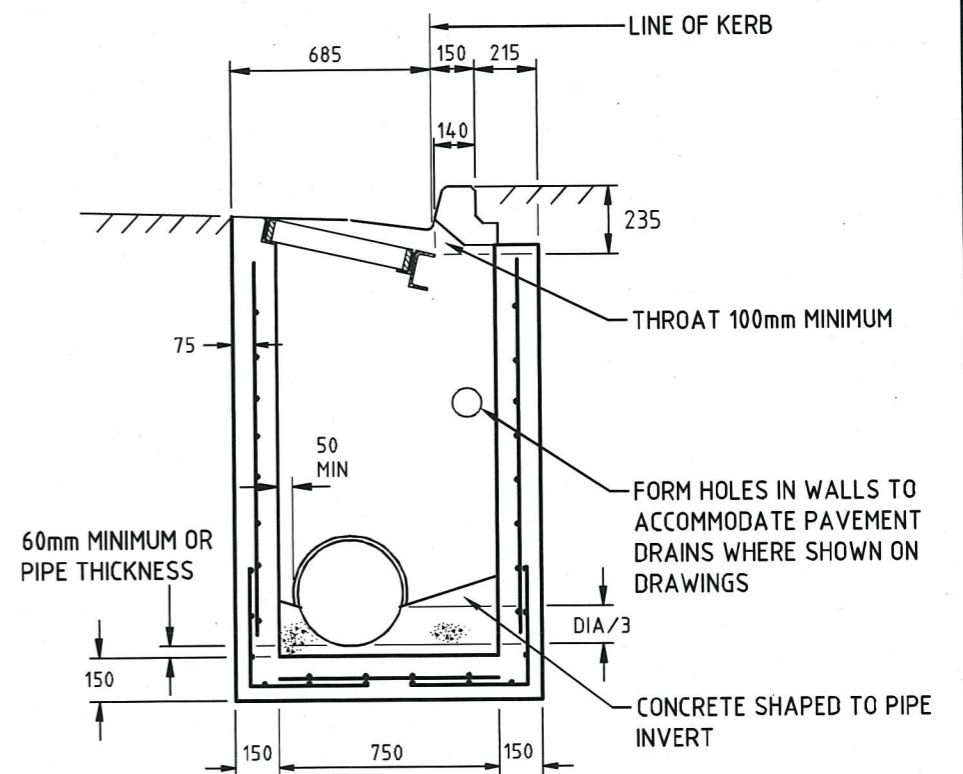
DETAIL 1



GRATE FRAME

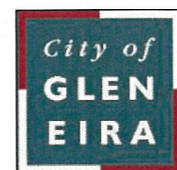


GRATE



SECTION A-A

**CITY OF GLEN EIRA**



Corner Glen Eira and Hawthorn Roads  
PO Box 42  
Caulfield South Vic 3162  
Phone 9524 3333  
Fax 9524 3424  
E-Mail [mail@gleneira.vic.gov.au](mailto:mail@gleneira.vic.gov.au)  
Web [www.gleneira.vic.gov.au](http://www.gleneira.vic.gov.au)

	Initials	Date	CAD Reference
Designed	CAP WORKS	AUG 2009	STD-110 _S3 SEP
Drawn	CAP WORKS	AUG 2009	Reference
Checked			VicRoads SD 1322
Approved	<i>[Signature]</i>		Version
Dir. Assets & Facilities	Date	16-01-12	

**S3 TYPE (GRATED) SIDE ENTRY PIT  
SINGLE**

SCALE: AS SHOWN	DRG. NO. STD-110	SHEET 1 OF 1
-----------------	------------------	--------------