

CAULFIELD PARK



MASTERPLAN REFRESH

MAY 2019

PREPARED BY

**JOHN PATRICK LANDSCAPE ARCHITECTS
PTY LTD**

324 VICTORIA STREET, RICHMOND, VICTORIA, 3121

Telephone (03) 9429 4855 Facsimile (03) 9429 8211

E-mail admin@johnpatrick.com.au

INTRODUCTION.....	3
DRAFT MASTER PLAN REVIEW	4
Landscape Vision [6.2.1].....	4
War Memorials [6.2.2]	6
The Aviary [6.2.3]	8
Roads & Parking [6.2.4].....	9
Sporting Ovals & Pavilions [6.2.5]	10
Play Facilities (Adolescents) [6.2.6]	12
Play Facilities (Children) [6.2.7]	13
The Walking Trail [6.2.8]	14
Public Toilets [6.2.9]	15
General Amenities [6.2.10]	16
BBQ & Picnic Facilities [6.2.11].....	17
Maintenance Standards & Practices (Horticulture) [6.2.12]	18
Maintenance Standards & Practices (General) [6.2.13]	19
Ornamental Lake [6.2.14].....	20
The Conservatory [6.2.15].....	21
The Band Rotunda [6.2.16]	22
Park Entries, Paths & Signage [6.2.17]	23
Interpretation [6.2.18]	25
Additional Issues raised in Community Feedback process that were not covered in original Masterplan	26
CAULFIELD PARK MASTERPLAN ‘REFRESHED’	28

INTRODUCTION

In June 2017 the Glen Eira City Council asked John Patrick Landscape Architects to undertake a 'Review and Refresh' of its Masterplan for Caulfield Park issued to Council in March 2001. Council considered that it was time to re-examine the document that had guided much of the work undertaken in the park in the last 17 years to see:

- what recommendations had been implemented and judge their success;
- which recommendations had not yet been implemented and judge whether they were still appropriate;
- if new ideas and approaches were needed given the passage of time and changed circumstances for the local community and the broader environment.

JPLA conducted a physical audit of the park to see what new works had been undertaken, assess their general condition as well as the general overall condition of the park and its facilities nearly 18 years on.

Feedback on the success of the new facilities or works was sourced by Council through the conducting of an extensive community consultation process. As part of this consultation review process, Council sought feedback from stakeholders, park user groups and the broader City of Glen Eira community on the implemented masterplan recommendations and their views on what new or additional initiatives should be considered for inclusion in the 'Refreshed' Masterplan. This valuable feedback has been incorporated in the recommendations outlined in both this 'Refresh' report and on the new updated Masterplan attached to this report.

The draft Masterplan was presented at the Ordinary Council Meeting of 5th February 2019, where Council noted the feedback received during consultation. Council endorsed the recommended changes and for the draft Masterplan to be updated and presented to a future Ordinary Council Meeting for adoption.

DRAFT MASTER PLAN REVIEW

Landscape Vision [6.2.1]

2000 Masterplan - Issues/ Opportunities

Caulfield Park is both physically and functionally divided into two by the combination of road, Council Depot and sporting clubs. A distinct change in landscape styles also occurs at this point. The western half contains numerous mature specimens of exotic and native trees, while the east contains a more limited collection of mixed specimens sparsely planted in turfed playing fields. An opportunity exists to strengthen the park's landscape character by reinforcing this difference.

2000 Masterplan – Recommendation

To acknowledge and reinforce the different nature of the two halves of Caulfield Park through a tree planting and replacement policy. A possible vision for Caulfield Park is one that sees the mostly exotic 19thC. Gardens of the west conserved and enhanced by a tree replacement policy that is tailored to preserve that historic nature. (See 5.2 MANAGEMENT GUIDELINES: TREES). In the east, a low maintenance – water sensitive 21stC. Native landscape of trees, low shrubs and groundcovers in mulched beds begins at the site of the old Aviary from where it spills out to fill the spaces between sports ovals. A second strong landscape type is therefore created to balance that of the West and meet the demands of a broad cross section of the community.

Projects Implemented

- + Contrasting planting scheme between the two ends of the park have been adhered to, with native vegetation up the eastern end of the park and a mix of exotic and native specimens throughout the western end.
- + A tree survey was completed 18 months ago with a new one to be completed every three years.

Current Condition

- + Caulfield Park is well presented with many trees planted as part of the masterplan, which are healthy and create many benefits for park users.
- + Although, a trial and error approach was required for native planting in the eastern end of the park, new trees are providing good canopy coverage, enhancing the park amenity and providing shade opportunities.

Issues

- + Many tree species find it difficult to grow within the soil profile of Caulfield Park and with limited irrigation in certain areas.
- + The existing irrigation system cannot adequately service all the playing field surfaces, trees and garden bed areas.
- + Consider increasing biodiversity in planting choices throughout the park.

'Refresh' opportunities and recommendations

- + Continue to protect and enhance the existing landscape planting strategy across the park, specifically the exotic and native planting to the western historic precinct and the native and indigenous planting to the eastern precinct by undertaking the following:
 - Appropriate tree planting and replacement policy for the park.
 - Planting native landscape of low shrubs and groundcovers in mulched beds in the eastern half.

- Explore introducing feature/display garden beds in the western section to highlight key nodes/attractors within the park.
 - Select species and cultivars that are low maintenance, drought tolerant and long-lived to increase the likelihood of plant survival and reduce replacement costs.
 - Explore opportunities for mulching around trees to assist with water retention and reduce reliance on use of potable water.
 - Develop a list of tree species and cultivars which are well suited to the local climate, soil and drainage characteristics of the eastern end of the site.
 - If planting between the sporting ovals is not possible or has limited opportunities, additional tree planting around the perimeter of the park should be explored.
 - Tree planting to maintain site lines into the park, through selection of species and cultivars with usually a single straight main trunk supporting a domed crown, or columnar form, allowing for visual permeability into the park (i.e. *Corymbia maculata* - Spotted Gum)
 - Continue to regularly audit /inspect trees by Council Arborists for risk/hazard assessment and to identify if any trees require pruning, detailing or removal.
- + Safeguard and enhance the 19th Century heritage and character of the western end of Caulfield Park.
 - + Create engaging landscapes and infrastructure that promotes social cohesion, equality and accessibility to all members of the community.
 - + Create spaces where a variety of diverse, engaging and accessible activities can occur to encourage people of all ages, genders, abilities and cultural backgrounds.
 - + Continue to explore opportunities to improve sustainability, biodiversity, resilience and adaption to a changing climate.

War Memorials [6.2.2]

2000 Masterplan - Issues/ Opportunities

Two major War Memorials are located within the park. The 'Cenotaph' is popular and the site of present-day Remembrance ceremonies while the 'Cross' is under-utilised and generally thought to be unattractive and intrusive

2000 Masterplan – Recommendation

The two memorials are to be consolidated into one by the relocating of the Remembrance Plaque from the 'Cross' to a position adjacent to the 'Cenotaph' on a newly constructed granite podium. The size of the podium plus the reshaping of existing levels to be determined to better facilitate Remembrance ceremonies. The Cenotaph's perimeter path system, which was removed in the 1970's remodelling, should be reinstated. New accent lighting of the Cenotaph should be installed. Liaison with the local branch of the R.S.L. will be needed to determine the necessary size and layout of this new area.

The concrete viewing platform of the 'Cross' is to be demolished, while the poorly performing rosemary hedges and rose beds are to be removed and replaced with a simple gravel surface, leaving only the eight *Cupressus torulosa* – Bhutan Cypress specimens situated in a gravelled cross. The Lone Pine Memorial of *Pinus brutia* - Turkish Pine specimen plus an adjacent commemorative plaque, should also be set in a new gravel field to enhance and better define this important memorial.

Projects Implemented

- + Remembrance Plaque from the 'Cross' has been relocated to a position near to the 'Cenotaph'.
- + Concrete viewing platform of the 'Cross' has been demolished.

Current Condition

- + Rosemary hedges and roses within garden beds are underperforming due to soil quality and microclimate under the existing Pines.
- + The Lone Pine Memorial of *Pinus brutia* - Turkish Pine specimen has little connection to other memorials.

Issues

- + Accessibility for the elderly and disabled on ANZAC day.
- + Roses require high level of maintenance and are impacted by vandalism and theft.

'Refresh' opportunities and recommendations

Cenotaph Memorial (3) and Cross Memorial (4)

**reference numbers align with refreshed landscape master plan 2019*

- + Consolidate memorials through the upgrading of the Cenotaph to become the main memorial in the park. Upgrade to include limited feature paved surfaces suitable for events and ceremonies, honour walls, feature lighting, new planting and interpretative signage.
- + Revisit the 2000 master plan recommendation to upgrade the cross/pine tree memorials with new edging, surface treatments, planting and signage to better define memorials and reduce maintenance issues.
- + Formalise the Cross Memorial under the eight cypress pines with interpretative signage.

-
- + More interpretive signage at both memorials to celebrate and provide information on the memorials. Linked to 'Heritage and Significant Tree Walk'.

The Aviary [6.2.3]

2000 Masterplan - Issues/ Opportunities

The question of whether bird aviaries are an appropriate public park feature is a contentious issue that needs to be addressed. Comments recorded at community consultations suggested that the creation of natural habitat was a better way to bring more bird life into the park.

2000 Masterplan – Recommendation

An effort has been made previously to make the Aviary an attractive feature of the park. This work should be the basis of an alternative bird life feature within Caulfield Park. Cages are to be replaced with native bird attracting plants that are to extend beyond the confines of the present aviary and out into the eastern half of the park. (See 6.2 Action Plan: Landscape Vision). The landscaping of this area would create an attractive and natural area for picnickers using the adjacent BBQ facilities.

Projects Implemented

- + Project implemented.

Current Condition

- + Very popular area amongst the community.
- + Expansion of the facility into the current depot area is universally supported.
- + In good condition with some plant losses due to trampling of plants.

Issues

- + Some maintenance issues with public entering landscaped areas and damaging plants.
- + Stone bird baths too shallow (do not retain water).

'Refresh' opportunities and recommendations

The Aviary (7)

**reference numbers align with refreshed landscape master plan 2019*

- + Install protective garden 'hoops' to protect planting.
- + Make bird baths deeper to retain more water.
- + Review planting palette and replace plants to establish appropriate density and coverage.

Council Parks Depot (8)

**reference numbers align with refreshed landscape master plan 2019*

- + If depot can be relocated in the future, then the Aviary Garden should be extended to include additional picnic and barbecue facilities and accommodate further opportunities for informal play beyond the adjoining playground. All existing buildings should be removed to maximise planting area.
- + Include art or sculptures features that references local history and the previous use as an Aviary to provide interactive, educational and sensory opportunities.

Roads & Parking [6.2.4]

2000 Masterplan - Issues/ Opportunities

The existing North–South internal road is a divisive and inappropriate element within the park, while the current single entry/exit on Balaclava Road is inadequate to meet traffic demands. The present practice of cars parking on lawn areas is seen as highly undesirable by many in the local community.

2000 Masterplan – Recommendation

Remove the central section of roadway and create a ‘one way’ loop road with separate entry and exit crossovers in Balaclava Road. The new section of roadway will create additional parking spaces adjacent to sporting clubs, allowing disabled bays to be provided, while allowing a green corridor to be formed where once a roadway existed. The present Inkerman Road entry/exit will need to be upgraded for the exclusive use of Council depot vehicles.

The use of fences and lockable gates, plus stricter policing of illegal parking is needed to discourage car parking on grassed areas. Adequate signage to clearly identify that parking on grass is illegal is recommended

Projects Implemented

- + Central section of roadway has been removed and ‘one way’ loop road with separate entry and exit crossovers in Balaclava Road constructed.
- + Additional parking including disabled bays have been provided.
- + Inkerman Road entry/exit upgraded for the exclusive use of Council depot vehicles.
- + Plinth kerbing has been installed as a replacement for the old timber post & rail vehicle exclusion fencing along much of the Balaclava & Inkerman Road in the eastern half of the Park as well as along the length of the Park Crescent frontage.

Current Condition

- + ‘One way’ loop road works well.
- + Problem of unwanted vehicle parking on grass areas appears to be resolved through additional fencing, lockable gates and a stricter policing of illegal parking.

Issues

- + Council depot gravel entrance road has ongoing maintenance issues with pot holes and puddling.
- + Council depot vehicle entry and internal gravel road is unattractive and creates safety conflict with park users.
- + There is little consistency in fence, gate and bollard styles throughout the park.

‘Refresh’ opportunities and recommendations

Circulation Path (12)

**reference numbers align with refreshed landscape master plan 2019*

- + Explore opportunities to install plinth kerbing where needed to prevent unauthorized vehicle access into the park to protect assets and reduce risk to public.
- + There is a preference for plinth kerbing not to be installed at the western end of park.
- + Create a standard suite of fence, gate and bollard to be used to facilitate the integrated management, maintenance and repairs of Council assets.

Sporting Ovals & Pavilions [6.2.5]

2000 Masterplan - Issues/ Opportunities

The sporting field to the east is an area of high activity on weekends. Presently, the potential for accidents is high with many games being played concurrently on overlapping ovals. Sparse groups of trees border these irregular ovals but offer little in the way of shade or visual screening. Most ovals are not serviced by any path network while the existing pavilions are felt to be inadequate and poorly sited in relation to the ovals.

2000 Masterplan – Recommendation

Reduce the number of ovals from seven to six and site them to eliminate overlapping of boundaries. Plant belts of native trees, low shrubs and groundcovers in the new enlarged areas between ovals in a way that will provide greatest shade, wind protection and visual screening. Replace the two existing pavilions with two purpose-built buildings and site them to best serve all playing fields and other recreational resources.

Projects Implemented

- + Ovals have been reduced from seven to six with overlapping of boundaries eliminated.
- + Additional parking including disabled bays has been provided.
- + Planting of some trees, low shrubs and groundcovers between ovals for shade, wind protection and visual screening.

Current Condition

- + The older pavilions do not meet current standards.
- + In some locations, planting between the sporting ovals is not possible due to safety offsets of playing areas.

Issues

- + The existing irrigation system cannot adequately service all the playing field surfaces.
- + The older pavilions do not adequately meet the current needs of the sporting clubs.
- + Oval 1 has limited drainage and is prone to flooding.
- + There were requests to see a greater level (lux) of lighting provided for the soccer pitches to enable night games. Additionally, there was support for the proposal to explore lighting opportunities on Oval 2 adjacent to the pavilion.

'Refresh' opportunities and recommendations

Water Sensitive Open Space (9)

New Pavilion (15)

Sportsground Lighting (18)

**reference numbers align with refreshed landscape master plan 2019*

- + Continue to allow for sporting facilities to evolve within the existing areas to accommodate growth and community needs.
- + The two older pavilions to be consolidated into a centrally located pavilion.
- + Pavilion along Park Crescent to be removed in accordance with adopted Pavilion Redevelopment Strategy.
- + Oval 1 is scheduled to be upgraded including drainage, irrigation, reshaping, a new turf wicket table and warm season grass.
- + Where applicable, continue the 2000 master plan recommendation to plant belts of native trees, low shrubs and groundcovers in-between ovals to create shade, wind protection and visual screening opportunities.

- + Undertake a feasibility study to address the flooding of sporting ovals, and other areas, through water sensitive design and water capture opportunities. Consider cost-effective opportunities to reduce potable water use.
- + Explore installation of sportsground lighting on Oval 2 to extend the range of use of this area.
- + Continue to monitor the use levels of all structured sporting facilities at Caulfield Park to identify if they are at capacity or if there is potential to combine and restructure.

Play Facilities (Adolescents) [6.2.6]

2000 Masterplan - Issues/ Opportunities

Caulfield Park has a shortage of play equipment and facilities for adolescents. The two existing cricket practice nets will need to be relocated due to the construction of the new loop road.

2000 Masterplan – Recommendation

Provide an additional basketball court and tennis hit-up wall plus basketball-shooting circle. Three new cricket practice nets to be situated south of Council Depot.

Projects Implemented

- + Three (3) new cricket practice nets provided.

Current Condition

- + Half courts surfaces have cracks and football goal posts are in poor condition.
- + Currently, tennis court demand appears to be met.

Issues

- + There have been several requests for lighting to be installed at cricket nets for the months outside daylight savings time to allow use later in the evening.
- + Demand for additional cricket nets - 3 nets area not meeting the needs of clubs.
- + Football posts are not located in the most appropriate location.
- + Basketball half courts are located at various locations across the reserve, not allowing for most efficient use.
- + Community suggestions to provide facilities that could support older children and active adults in informal sporting activities.

'Refresh' opportunities and recommendations

Existing Cricket Nets (10)

Existing Multi Sport Facilities (11)

Leased Sports Area (16)

**reference numbers align with refreshed landscape master plan 2019*

- + Expand basketball half court opportunities through the creation of multi-sport spaces (e.g. Packer Park and King George VI Reserve).
- + Potential to consolidate and relocate all basketball courts next to Park Crescent playground to create regional Youth Precinct.
- + Investigate opportunities to extend the cricket nets to cater for the large numbers that use them during cricket season.
- + Investigate opportunities for lighting at cricket nets (including integrating with sports oval lighting)
- + Relocate football posts or consolidate into multi-sport spaces.
- + Consider opportunities for alternative uses if any area becomes surplus to the needs of the leased sports club.
- + Design or upgrade work to all new or existing play facilities to be subject to a community consultation design process.

Play Facilities (Children) [6.2.7]

2000 Masterplan - Issues/ Opportunities

The three existing playgrounds are dated in their design and only adequate in their level of amenity for supervising adults. Security fencing now standard in many new playgrounds is absent.

2000 Masterplan – Recommendation

Major upgrades i.e. new equipment, additional seats in shade and security fencing, are proposed for the larger Park Crescent and smaller Inkerman Road playgrounds. A minor upgrade i.e. security fencing plus additional shaded seating is appropriate for the small playground east of the lake.

Projects Implemented

- + Park Crescent playground has had minor upgrades as part of the Council's playground strategy.

Current Condition

- + Meets the relevant Aust Standards See Playground Audits.
- + Aging older style equipment (10-15yrs old).
- + Good accessibility to majority of play equipment.

Issues

- + Limited shade structures (except for northern playground).
- + Mostly structured playground equipment with limited natural play value.
- + Is older style equipment compliant with current Australian Standards?
- + Western playground is currently due for a minor upgrade within 3 years.
- + Eastern playground is currently due for a major upgrade within 3 years.
- + Northern playground is currently due for a minor upgrade within 6 years.

'Refresh' opportunities and recommendations

Park Crescent Playground (13)

Park Crescent Urban Play and Recreation Facilities (14)

**reference numbers align with refreshed landscape master plan 2019_*

- + Opportunity to expand and enhance eastern playground (Park Crescent) as an intergenerational multi play precinct which incorporates elements of fitness training, casual sports and dynamic movement and play.
- + The upgrade should provide junior and senior play elements, integrate the mound and incorporate more opportunities for unstructured natural play to better connect the space to the wider park.
- + Western playground should be retained as a junior playground but with the addition of natural and sensory play elements and toddler swings.
- + Explore the opportunity to provide a small scooter loop / bike loop as part of a Park Crescent playground upgrade or Multi-play area development;
- + Design or upgrade work to all new or existing play spaces to be subject to a community consultation design process.

The Walking Trail [6.2.8]

2000 Masterplan - Issues/ Opportunities

The walking trail is a popular and much used facility, its upkeep is therefore an important part of the park's maintenance program. The complementary fitness equipment is basic and by modern standards dated.

2000 Masterplan – Recommendation

Ensure the entire path is of a standard minimum width of 2.0m and in good repair. Upgrade fitness equipment to current acceptable standards.

Projects Implemented

- + Path network and fitness equipment completed.

Current Condition

- + There are several trouble spots with washouts on the granitic gravel path surface.
- + Fitness equipment is aging.

Issues

- + Fitness equipment provides limited value due to its disbursement around the park.
- + Existing drainage system along granitic path network is completely blocked with granitic gravel.

'Refresh' opportunities and recommendations

Circulation Path (12)

**reference numbers align with refreshed landscape master plan 2019*

-
- + Maintain the perimeter walking/jogging track as a compacted gravel surface like 'The Tan' around the Melbourne Botanic Gardens. This surface contributes to both the existing heritage and natural character of the park.
 - + Investigate options to mitigate maintenance issues.
 - + Continue to reinforce granitic gravel path network along Balaclava Road to create a continuous loop.
 - + Integrate interpretive/ wayfinding signage along trail as appropriate.
 - + Increase shade opportunities through canopy tree planting.

Public Toilets [6.2.9]

2000 Masterplan - Issues/ Opportunities

A shortage of public toilets has been identified in both community consultations and survey work. The shortage is particularly critical in playground areas.

2000 Masterplan – Recommendation

Construct two new toilets adjacent to the playgrounds on Inkerman Road and south of the main oval. Replace existing aged toilet block at the Park Crescent playground/BBQ facilities. Add additional automated toilet to existing at Hawthorn and Balaclava roads intersection.

Projects Implemented

- + New toilet incorporated within new Multi-purpose Pavilion.

Current Condition

- + Park appears to be well serviced by public toilets with four (4) toilets located at the main pavilion, Park Crescent playground, Inkerman Road playground and corner of Hawthorn and Balaclava Roads.

Issues

- + Unique community requirements dictate the need for a toilet facility that is a 'non-automated' facility.

'Refresh' opportunities and recommendations

Park Crescent Playground (13)

**reference numbers align with refreshed landscape master plan 2019*

- + Investigate whether existing public toilets require upgrades and undertake as part of larger park implementation projects.
- + Retain Park Crescent toilets as 'non-automated' facility.
- + Investigate opportunities for additional public toilets as part of future pavilion upgrades.
- + Incorporate better signage to direct park users to public toilet locations including delineation of automated/non-automated type.

General Amenities [6.2.10]

2000 Masterplan - Issues/ Opportunities

Community consultation identified a lack of toilets, drinking fountains, taps and rubbish bins within the park. Lighting was judged as being inadequate for today's security needs.

2000 Masterplan – Recommendation

Additional facilities to be supplied and sited as indicated on Final Master Plan.

Projects Implemented

- + Additional taps, drinking fountains, bins and lighting have been added.

Current Condition

- + Two styles of bench seats have been installed - a heritage style and a more modern style.
- + The existing arbour on south side of lake is in poor condition.

Issues

- + There is little consistency in fence, gate and bollard styles throughout the park.
- + The arbour is a popular feature for wedding photos within the park, its current deteriorating condition needs to be addressed.

'Refresh' opportunities and recommendations

- + Investigate opportunities for additional facilities at key nodal points and as part of future upgrades.

Barbecue and Picnic Facilities

2000 Masterplan - Issues/ Opportunities

Existing cooking facilities are used intensively by both large and small groups. Presently, the great majority of electric BBQ's are located adjacent to a playground at the eastern end of the park. This congregation of one type of facility in one location limits the range of choices for park patrons.

2000 Masterplan – Recommendation

Existing eastern facilities to be upgraded in conjunction with playground. Create a second picnic/playground west of Council depot that will offer an alternative facility for smaller groups and meet the needs of people watching events on the main oval.

Projects Implemented

- + Second picnic/playground west of Council depot implemented.

Current Condition

- + Aging facilities due to high usage.

Issues

- + High demand requires monitoring of condition and adequacy of current facilities.

'Refresh' opportunities and recommendations

- + Existing eastern facilities to be upgraded in conjunction with playground ensuring the facilities meet the demand from the community.
- + Continue to review, maintain BBQ and Picnic Facilities in line with maintenance reports.

Maintenance Standards & Practices (Horticulture) [6.2.12]

2000 Masterplan - Issues/ Opportunities

Several poor or dangerous tree specimens were identified in an adjunct Tree Survey of Caulfield Park. Garden beds and shrubberies are poorly maintained and limited in number.

2000 Masterplan – Recommendation

To review all existing tree management guidelines and horticultural standards and practices to formalise new ones that will better manage the resource. New shrub beds to be designed for key high visibility locations such as Entry gateways.

Projects Implemented

- + Several poor or dangerous tree specimens were removed as per Tree Survey of Caulfield Park.

Current Condition

- + The park is well presented with trees, shrubs and groundcovers in generally good condition.
- + There are some gaps in garden beds where dead plants have not been replaced.

Issues

- + Garden beds in high activity areas are being trampled.

'Refresh' opportunities and recommendations

Living Feature Garden (17)

**reference numbers align with refreshed landscape master plan 2019*

-
- + Review planting in garden beds and replace plants to establish appropriate density and coverage.
 - + Incorporate garden bed guards to protect garden beds. Guard style(s) to be consistent with both 'Heritage' and 'Natural' themes within the park.
 - + Continue to regularly audit trees by a suitably qualified arborist to undertake risk/ hazard assessment and to identify if any trees require pruning, detailing or removal.
 - + Incorporate some mulched areas around trees to remove competition from surrounding turf.
 - + Explore introducing garden beds to highlight key nodes/ attractors within the park.
 - + Incorporate, species and cultivars to be low maintenance, drought tolerant and long-lived to increase the likelihood of plant survival and reduce replacement costs.
 - + Review irrigation system to ensure all clusters of oval perimeter planting are watered satisfactorily.
 - + Introduce signage within garden beds educating the community on the impacts on vegetation by trampling and associated ongoing cost to Council and the community.
 - + Transform the existing rose garden area in the North Western entrance into a contemporary display garden that can demonstrate and educate a variety of horticultural principles and best practice in areas such as climate adaption, natural conservation or ornamental display.

Maintenance Standards & Practices (General) [6.2.13]

2000 Masterplan - Issues/ Opportunities

Community consultation identified strong disapproval with the current maintenance standard for the park. In particular, the general cleanliness of such areas as the lake and BBQ / picnic areas.

2000 Masterplan – Recommendation

Undertake a review of current park maintenance standards and practices, particularly in the identified problem areas.

Projects Implemented

- + Undertaken and ongoing.
-

Current Condition

- + Park is generally well kept and free of rubbish but there are rubbish collection issues at both picnic/BBQ facilities and on the western side of the lake where people picnic and feed the birds.
-

Issues

- + The general tidiness around the lake and picnic/BBQ facilities is an ongoing issue especially during busy times such as on weekends.
-

‘Refresh’ opportunities and recommendations

- + Continue to undertake a review of current park maintenance standards and practices, particularly in high use areas and in areas where new public facilities have been installed.
- + Create a standard suite of fence, gate and bollard to be used to facilitate the integrated management, maintenance and repairs of Council assets.

Ornamental Lake [6.2.14]

2000 Masterplan - Issues/ Opportunities

In terms of landscape beauty, the lake in its present condition is a lost opportunity. The health and cleanliness of the lake is not of an acceptable standard.

2000 Masterplan – Recommendation

Empty and clean the lake, repair/replace the existing fountain and lighting equipment within the lake. Plant aquatic plant material to provide added beauty and amenity for local bird communities. Implement a new maintenance schedule that will ensure the lake's health and cleanliness including a regular process of dredging.

Projects Implemented

- + Lake emptied and cleaned.
- + The existing fountain and lighting equipment within the lake has been repaired and replaced however there are on-going maintenance issues.

Current Condition

- + The lake is in considerably better condition since the study was completed in 2017.
- + Retaining wall of lake requires renewal.

Issues

- + Aquatic birds causing issues with vegetation establishment and growth.
- + Suckering elms continue to be an issue.
- + Maintaining adequate water levels of the lake.
- + The feeding of birds by people causing health issues for the birds.

'Refresh' opportunities and recommendations

Ornamental Lake and Arbor (5)

**reference numbers align with refreshed landscape master plan 2019*

-
- + Review previous report into island revegetation to see if new planting can be incorporated.
 - + Remove suckering elms to allow for a new planting scheme.
 - + Review current seating arrangements around lake to improve amenity and accessibility.
 - + Create a memorable visitor destination by repairing / extending the Arbor with viewing platform decking on lake edge.
 - + Integrate the outcomes of the 'Oval 1 Redevelopment and Associated Opportunities' project.
 - + Refresh signage asking people not to feed the birds and why.

The Conservatory [6.2.15]

2000 Masterplan - Issues/ Opportunities

The Conservatory is rudimentary, often closed and offers little in real value to the regular park user.

2000 Masterplan – Recommendation

Investigate the possible leasing of the building for conversion to a Café or Tearooms. This under used resource could then become a popular facility for the regular park visitor.

Projects Implemented

- + Removed and replaced with lawn area and new tree planting.

Current Condition

N/A

Issues

Community feedback provided suggestions to both include a café, and to not include a café. The suggestion to include a café raises issues and opportunities around commercial use in Council open space. This issue will be presented to a future Council meeting for further direction. This would seek to establish a consistent, transparent and manageable approach across all parks in Glen Eira.

‘Refresh’ opportunities and recommendations

- + Potential inclusion of historic photos as part of historical walking trail.
- + Potential introduction of a café or similar commercial operation into the park subject to Council policy.

The Band Rotunda [6.2.16]

2000 Masterplan - Issues/ Opportunities

The Rotunda or Bandstand currently appears a little lost in a sea of lawn. Graffiti diminishes the dignity and look of this significant building.

2000 Masterplan – Recommendation

Investigate the possibility of restoring some of the original architectural features. Restore the shrubbery to the base of the building.

Projects Implemented

- + Public lighting installed.

Current Condition

- + The bandstand is in better condition since lighting was installed, deterring vandalism

Issues

- + Potential for vandalism and anti-social behaviour at the Bandstand.

‘Refresh’ opportunities and recommendations

- + Revisit 2000 master plan recommendations of restoring some of the original architectural features.

Park Entries, Paths & Signage [6.2.17]

2000 Masterplan - Issues/ Opportunities

Caulfield Park is a large (25.8 ha) open edge style park with a multitude of pedestrian entry points. Many are both poor in design and condition. Presently the only formal gateway is a 70's designed mini plaza at the intersection of Hawthorn and Balaclava roads.

Signage within the park is poor or non-existent making navigation difficult for occasional visitors.

2000 Masterplan – Recommendation

A review and redesign of entry gateways with special attention paid to the provision of disabled access plus the provision of a Site Plan at each entry. The idea of restoring the diagonal path from the northwest corner to Balaclava Road (which was lost in the 1970's works that saw the creation of the lake) should be given serious consideration. The major path with its accompanying new avenue trees would both restore a lost defining axis and powerful avenue as well as facilitating the planting of an important new generation of large avenue trees for the future.

Projects Implemented

- + None.

Current Condition

- + North-west & south-west entries untouched.
- + Pedestrian entry at eastern end of Balaclava Road poorly identified.
- + Old signage still in place.

Issues

- + Inkerman/Hawthorn Road pedestrian entry has no personality or discernible design and does not directly connect to major paths in this part of the park apart from the walking trail.
- + The current 'plaza' style entrance at corner of Balaclava/Hawthorn Road is out of place, uninviting and does not work effectively with the heritage style plantings and layout of the western half of the park.
- + There are plans for a Public Transport Victoria (PTV) substation to be put underground at the Balaclava/Hawthorn Road intersection that could possibly help fund the project. The Substation would be a 20mx10m with the need for an exhaust vent above ground. This will need to be considered in any redesign of this area.
- + The possible restoration of a diagonal path running south-east from Balaclava/Hawthorn Road corner to Balaclava Road on an historical alignment to create new major treed avenue within the Heritage area.
- + The lack of safe pedestrian crossings across Hawthorn Road into the Park from residential areas to the west.
- + The call for paved pathways for bicycles and scooters (for children in particular) and as a safer all-weather surface.
- + Request to see acknowledgement of the indigenous history in the park.

‘Refresh’ opportunities and recommendations

North-South Diagonal Avenue (1)

North-West and South-West Main Entries (2)

Circulation Path (12)

**reference numbers align with refreshed landscape master plan 2019*

- + Revisit 2000 master plan recommendations to restore the diagonal avenue from the northwest corner to Balaclava Road. The avenue would provide the park with a second major tree avenue. It would also provide a strong connection to potentially a new harbour, the ornamental lake, the upgraded Cenotaph, and strengthen the character and appearance of a new upgraded entry at the Inkerman/Hawthorn Road corner.
- + Upgrade the south-west entry.
- + The south-west entry should integrate the new tram stop to help activate the space.
- + Review access points into Caulfield Park from Hawthorn Road in line with potential signalled or pedestrian crossings at Salisbury Street.
- + Ensure all new entries and paths in the western half reflect the heritage characteristics of park.
- + Entries should bookmark the prominent corners, creating the beginning of ‘grand avenues’ (Refer to Fitzroy Gardens as a good example of treed avenues).
- + Upgrade pedestrian entry at eastern end of Balaclava Road to cater for increased patronage to upgraded Park Crescent picnic/play facilities.
- + Continue to reinforce granitic gravel path network along Balaclava Road to create a continuous loop.
- + Opportunities for a children’s scooter / bike loop will be explored as part of a Park Crescent Play Space / Multi-play area. Key pathways, such as those that connect facilities and the central shared path are paved to aid accessibility and support cycling routes.
- + Maintain the perimeter walking/jogging track as a compacted gravel surface like ‘The Tan’ around the Melbourne Botanic Gardens. This surface contributes to both the existing heritage and natural character of the park.
- + Continue the installation of the plinth kerbing as vehicle exclusion fencing along Balaclava and Inkerman Road frontages as funding becomes available.
- + New signage should cover: Local History/ Naming/ Navigation/ Points of difference. Signage in the western heritage half to be in a style befitting the heritage park. Signs in the eastern half to be in a modern contemporary style with high design values. New signage provides opportunity to reference both indigenous and local history.

Interpretation [6.2.18]

2000 Masterplan - Issues/ Opportunities

Caulfield Park contains much in the way of historical and botanical interest. Presently this interest is not highlighted in any formal or organised way.

2000 Masterplan – Recommendation

The production of a 'Heritage and Significant Tree Walk' would assist visitors to better interpret and appreciate the history and significance of Caulfield Park.

Projects Implemented

- + Simple short 'Heritage and Significant Tree Walk' has been implemented.

Current Condition

- + Unknown

Issues

- + Signage is dated and does not incorporate all historical information within Caulfield Park.

'Refresh' opportunities and recommendations

- + More detailed tree walk / landmarks guide to be produced. Consider incorporating smart phone app.
- + Include Cross and Conservatory along with other historic photos as part of potential walking trail/park signage.
- + Explore opportunities to reference both indigenous and local history into park signage and/or storyboards.

Additional Issues raised in Community Feedback process that were not covered in original Masterplan

Issues/ Opportunities – Dog Off Leash

Community comments were received surrounding the provision of off-leash areas and the limitations when organised sport takes precedence. Suggestions include providing a permanent space, allowing Oval 1 to become off-leash and positioning of seating and water to better service dog walking.

Additionally, there were also suggestions around providing dog free areas - for both those concerned about dogs, impact of dogs on wildlife and the non-compliance of on-leash areas.

Recommendation - Dog Off Leash

The provision of dog off leash areas has been carefully considered over several years, with the approach at Caulfield Park providing off-leash areas to the eastern side and on-leash in the western side to protect the amenity and vegetation. This provides a reasonable balance for all types of users and park features.

This winter (2019), Officers will trial the use of sports ground lighting to extend the opportunity for dog off leash areas outside of organised sport times. The main oval is fully fenced and includes a turf wicket. This provides an area for casual sports or other activities without being impacted by off-leash dogs.

Fenced off-leash areas consistently have higher level of non-compliance – e.g. dog litter, digging and reduced supervision. Removing sections of fencing on off-leash ovals has been progressively implemented in Glen Eira over several years and has seen significant improvement in both compliance and condition of surfaces

Other issues raised; such as the location/number of dog bags and position of seating, will be investigated as part of on-going park management/maintenance.

Issues/ Opportunities – Operational Issues

- + Operational issues raised during consultation included:
 - Reduce service vehicles accessing lawn areas
 - Prohibit bicycles on gravel paths
 - Safety concerns around the depot vehicle movements

Recommendation – Operational Issues

- + Continue to manage and monitor operational issues as appropriate.

Issues/ Opportunities – Sustainability (Water Sensitive Urban Design)

- + The suggestion to explore water capture and water sensitive design elements was supported.

Recommendation - WSUD

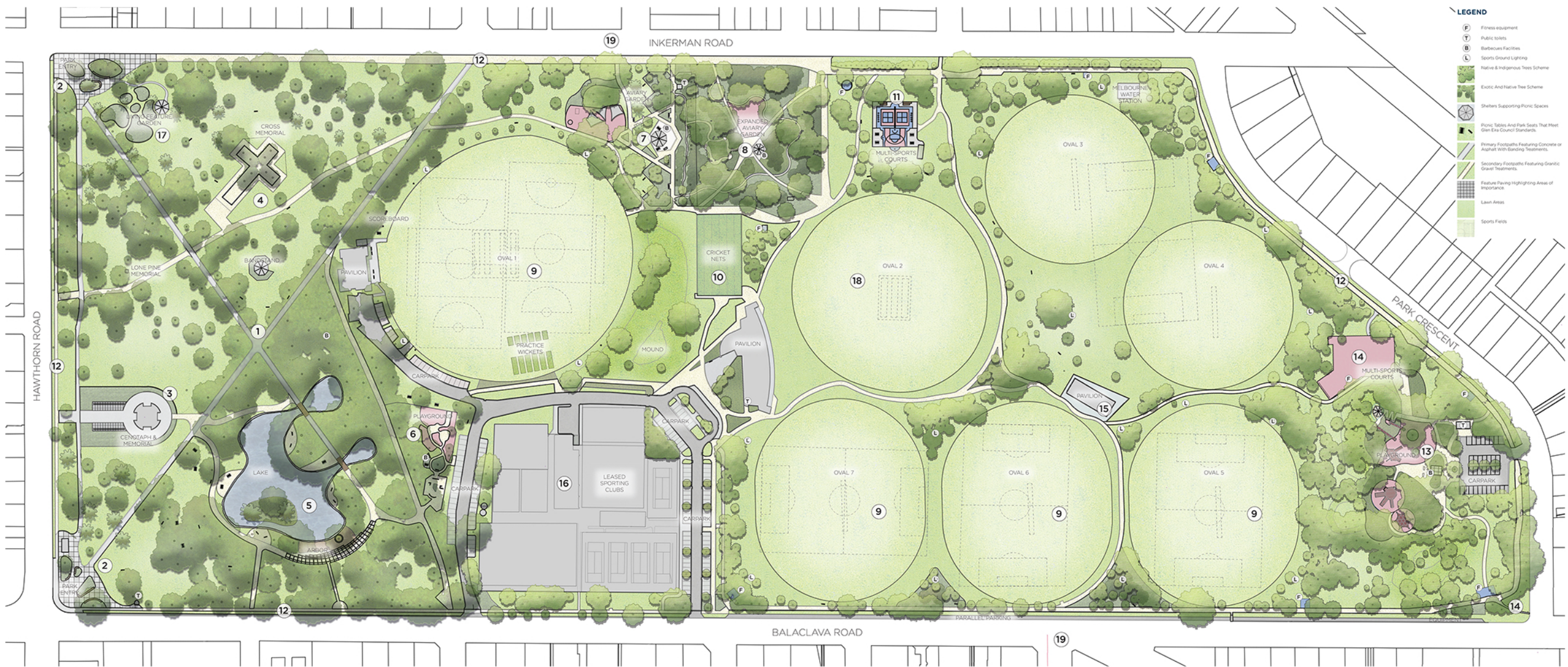
- + WSUD should be included wherever feasible in new construction projects within the park.

Issues/ Opportunities – Road Crossings

- + There were suggestions to improve the crossing of Inkerman Road particularly given the proximity to the Aviary Garden Playspace, popular locations in adjacent streets and connection between Normanby Road and Bambra/Redan Roads.

Recommendation – Road Crossings

- + It is recommended to include an improved crossing at the Bambra and Redan Road intersection and provision of an Inkerman Road crossing. Any impacts on car parking, layout and on road bicycle paths will be considered and be subject to community consultation as a separate process during future detailed design.



LANDSCAPE MASTERPLAN

Overall Park Vision

- Continue to protect and enhance the existing landscape planting strategy across the park, specifically the exotic and native planting to the western historic precinct and the native and indigenous planting to the eastern precinct.
- Safeguard and enhance the 19th Century heritage and character of the western end of Caulfield Park
- Continue to allow for sporting facilities to evolve within the existing areas to accommodate growth and community needs
- Create engaging landscapes and infrastructure that promotes social cohesion, equality and accessibility to all members of the community.
- Create spaces where a variety of activities can occur, a range of goals are addressed and different objectives can be pursued.
- Continue to explore opportunities to improve sustainability, resilience and adaption to a changing climate.

1. North-South Diagonal Avenues

Reinforce historical nature of the park by creating formal tree lined avenues by restoring the diagonal avenue from north-west corner to Balaclava road. The avenue provides all weather accessible connections to the arbour, ornamental lake, Cenotaph and new entries.

2. North-West and South-West Main Entries

Formalise a memorable gateway entry experience into the park by upgrading the prominent western park corners.

3. Cenotaph Memorial

Consolidate memorials through the upgrading of the Cenotaph to become the main memorial in the park through new feature. Limited feature paved surfaces suitable for events and ceremonies, honour walls honouring those who served, feature lighting, new planting and interpretive signage.

4. Cross Memorial

Formalise the Cross Memorial under the eight cypress pines with interpretative signage.

5. Ornamental Lake & Arbor

Address vegetation establishment and growth issues by removing suckering elms to allow for new planting scheme within the island. Review current seating arrangements to improve amenity and accessibility.

Create a memorable visitor destination by repairing/ extending the Arbor with viewing platform decking on lake edge.

6. Lakeside Playground

Promote nature based play by retaining the playground east of the lake as a junior playground with natural play elements, toddler swings and improved sensory play zone. Explore opportunities to replace pipe and rail fence within western carpark to create better interface with park.

7. The Aviary

Continue the immersive Aviary experience by reviewing planting palettes and introducing 'hoop guards' to protect and help establish appropriate plant density of native bird attracting plants.

8. Council Parks Depot

If Council Parks Depot can be relocated, extend the Aviary Garden to foster a strong botanical space through creative planting display and interpretation.

Include family, picnic and barbecue spaces that accommodate further opportunities for informal play beyond the adjoining playground. Consider the inclusion of art or sculptures as a feature that references the history of the Aviary to provide interactive and sensory opportunities.

9. Water Sensitive Open Space

Undertake feasibility study to address the flooding of sporting ovals, and other areas, through water sensitive design and water capture opportunities. Consider cost-effective opportunities to reduce potable water use.

10. Existing Cricket Practice Nets

Cricket practice nets have the potential to be increased to accommodate future demand.

11. Existing Multi Sport Facilities

Enhance existing multi sport courts with new line-marking, additional basketball/ netball hoops and seating for expanded social opportunities.

12. Circulation Path

Continue to reinforce granitic gravel path network along Balaclava Road by replacing existing concrete surfaces with granitic gravel to create continuous loop. Increase shade opportunities through canopy tree planting.

Explore opportunities to install plinth kerbing where needed to prevent unauthorised vehicle access into the park to protect assets and reduce risk to public. There is a preference for plinth kerbing to not be used at the western end of the park.

13. Park Crescent Playground

Foster an exciting play space suitable for children of all ages and abilities through the upgrading of the Park Crescent Playground. The upgrade should integrate the existing mound with an accessible path and incorporate more opportunities for unstructured natural play, enhance the unique topography of the landscape, and better connect the space to the wider park. Upgrade picnic facilities, car park, public toilets and shelters to complement this playground.

14. Park Crescent Urban Play and Recreation Facilities

Develop a new intergenerational multi-play precinct which incorporates elements of fitness training, casual sports and dynamic movement and play. This would enhance the canopied tree cover that defines the Park Crescent precinct. Incorporate a minor upgrade to the eastern entrance on Balaclava Road.

15. New Pavilion

Consolidate two older pavilions into new pavilion to be built in this location in accordance with Glen Eira's adopted Pavilion Strategy.

16. Leased Sports Area

Consider opportunities for alternative uses of land if surplus to the needs of leased sports clubs.

17. Living Feature Garden

Transform the existing rose garden area into a contemporary display garden that can demonstrate and educate a variety of horticultural principles and best practice in areas such as climate adaption, natural conservation or ornamental display.

18. Sportsground Lighting

Explore installation of sportsground lighting on Oval 2 to extend the range of use of this area.

19. Potential Pedestrian Crossings

Provision for potential Inkerman Road pedestrian crossing points and Bamba/Redan Road intersection pedestrian and bicycle improvements - consistent with Council's Integrated Transport Strategy. Site locations to be confirmed subject to community consultation and considered impacts of car parking, layout and on road bicycle paths. This will be reviewed as a separate process during future detailed design.



DATE 2019
SCALE N.T.S

LANDSCAPE MASTER PLAN

CAULFIELD PARK MASTER PLAN 'REFRESHED'