

GlenEira  
City Council  
gallery

Exhibitions  
and public programs  
January–June 2023



GLEN EIRA  
CITY COUNCIL





---

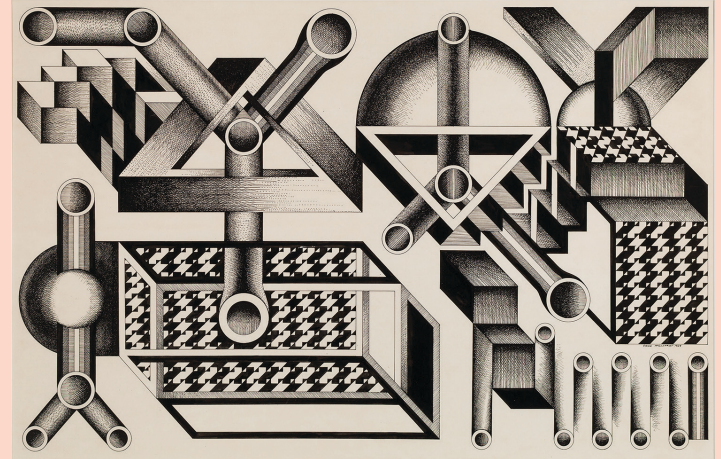
L. Mansfield  
Thursday Island/Waiben  
(TSI) people  
*Blue Roots 2022*  
Acrylic on canvas  
60 x 58cm  
Courtesy of The Torch

"This is a story about my lovely mother. I painted it in her honour. This is about me coming back home and enjoying my home again. It's called *Blue Roots* as a platypus lives in the roots of trees along the water's edge."

**L. Mansfield**

## Acknowledgement of Country

Glen Eira City Council acknowledges the Boonwurrung/Bunurong and Wurundjeri Woi Wurrung peoples of the Eastern Kulin Nation as Traditional Owners and Custodians, and pays respect to their Elders past, present and emerging. We acknowledge and uphold Traditional Owners' continuing relationship to the land and waterways. Council extends its respect to all Aboriginal and Torres Strait Islander peoples.



---

Front cover image:  
Louise Paramor  
*Space Monk 2009*  
Oil enamel on glass. 100 x 100cm  
Glen Eira City Council Art Collection  
Courtesy of the artist

---

Above image:  
Erica McGilchrist  
*Ambiguous Objects No. V 1969*  
Pen and ink on card. 48.3 x 73cm  
Glen Eira City Council Art Collection  
Erica McGilchrist Donation  
Courtesy of the Estate of Erica McGilchrist

## Exhibition dates

### 18 January–5 February

*Stories from Council's  
Art Collection*

Jenny Zhe Chang  
*Light with hope — Sharing*  
Gallery Two

### 24–29 January

*Paper Planet*  
By Polyglot Theatre

### 9 February–12 March

*International Baccalaureate  
Visual Arts Exhibition*

Marley James Wright  
*Rocks and Trees*  
Gallery Two

### 17 March–30 April

Glen Eira Artists Society  
*Colour*

Glen Eira Cheltenham Art Group  
*Diamond Anniversary  
Exhibition: 1963 to 2023*

Nina Waterval  
*Waterverf*  
Gallery Two

### 5 May–4 June

The Torch  
*Confined 14*

### 8 June–2 July

*28th B'nai B'rith Jewish  
Youth Art Exhibition*

Susie Raz  
*For the one whose voice  
was silenced*  
Gallery Two

## Live Sunday Sessions

### Sunday 12 February

Monica Casaceli

### Sunday 12 March

Shoehorn



### Sunday 14 May

Madi Coville Walker

### Sunday 11 June

Rita Satch

## Workshops

### Sunday 12 February

*Let's Be Alexander: Children's  
Sculpture Workshop*  
Yaz Gaté

### Sunday 12 March

*Introductory Ikebana  
Workshop*  
Shoso Shimbo

### Sunday 14 May

*First Nations Weaving Workshop*  
With a Torch artist

### Sunday 11 June

*Contemporary Portraiture  
on Paper Workshop*  
Esther Erlich

Note: the Gallery program is subject to change.

18 January–5 February

## Stories from Council's Art Collection

Glen Eira City Council curated exhibition



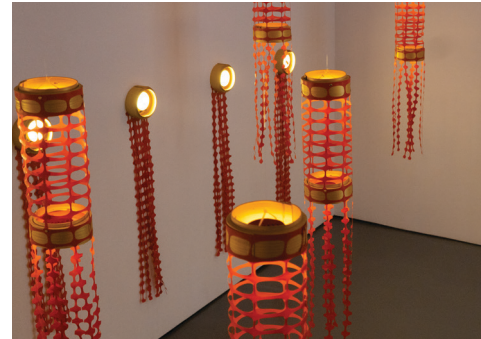
---

Linda Wachtel  
*Stories from the Interior (vii)* 2017  
(Yvette, East Caulfield)  
Pigment ink on archival  
cotton rag, 50 x 70cm  
Glen Eira City Council  
Art Collection

The diverse collecting themes that have shaped Glen Eira City Council's Art Collection since 1975 are explored in this exhibition, including suburban themes that reflect residents' lifestyles, the work of significant Australian artists, works by members of the Boyd family who lived and worked in Murrumbena and works of quality by local artists. Over the decades, the collection has grown through donations, purchases, commissions and bequests. Featured in this exhibition are paintings, drawings, prints, ceramics and textiles by selected 20th and 21st-century Australian artists.

18 January–5 February  
Gallery Two

## Jenny Zhe Chang **Light with hope — Sharing**



---

Jenny Zhe Chang  
*Light with hope — Peace* 2022  
Bamboo steamers, safety  
mesh, motion sensor lights,  
fishing line and gold paint  
Courtesy of the artist

*Light with hope — Sharing* is a site-specific installation created by local artist Jenny Zhe Chang to explore Chinese-Australian identity and cultural traditions. The installation features Chinese lanterns with sensor motions and lights.

Traditional bamboo steamer sculptures are displayed on a table to symbolise the act of sharing 'dim sum' dishes during Yum Cha and encourage ideas of resilience, hope, and wellbeing.



---

*Paper Planet*  
Courtesy of Polyglot Theatre  
Photo: Ai Ueda

Polyglot Theatre is supported by the Victorian Government through Creative Victoria.

24–29 January

## Paper Planet

By Polyglot Theatre

*Paper Planet* is a universally accessible experience that will delight the whole family these school holidays.

Children and families are invited to create a beautiful world inside a forest of tall cardboard trees, using only paper, tape and their imaginations. Theatre and play merge in this magical place, as creatures, plants, costumes, characters, stories and adventures spring to life. *Paper Planet* grows as more families visit, and every session is truly unique as imaginations go wild.

*Paper Planet* is designed for children aged two to 12 and their families.

**Dates:**

Tuesday 24 January  
Wednesday 25 January  
Friday 27 January  
Saturday 28 January  
Sunday 29 January

**Session times:**

One-hour sessions run each day (except Australia Day) from 10.30am, 11.30am, 2pm and 3pm.

**Free, bookings recommended with limited walk-ups**  
[www.gleneira.vic.gov.au/gallery-programs](http://www.gleneira.vic.gov.au/gallery-programs)

**Please note:** the Gallery will be closed for the installation of the *Lunar New Year* event on Sunday 22 January, for the installation of *Paper Planet* on Monday 23 January and for the Australia Day public holiday on Thursday 26 January.

9 February–12 March

## International Baccalaureate Visual Arts Exhibition

A range of innovative artworks from the *International Baccalaureate Diploma Programme (IBDP)* visual arts course are featured in this exhibition. Selected students' work from 2022 will be displayed. The works address a range of themes from personal and cultural identity, urban environment, and climate change to social issues, and a connection with the natural world.

Visitors will be provided with an insight into the emerging talents from the *IBDP*, and an understanding of the different approaches and the varied work produced in this unique two-year study program.

### Free floor talks by IBDP students

**Saturday 11 February,**

**1pm–1.30pm, 10-minute Q&A**

Sammi Wu, Lauriston Girls' School

**Sunday 26 February**

**1pm–1.30pm, 10-minute Q&A**

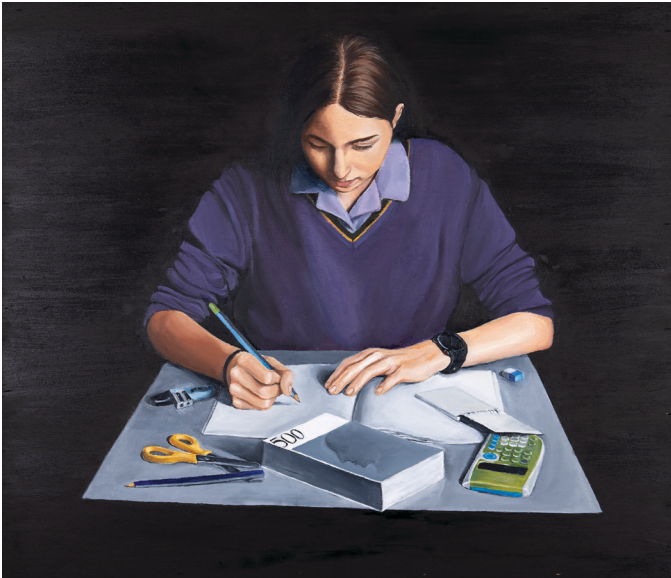
Elsa Li, Geelong Grammar School

**2pm–2.30pm, 10-minute Q&A**

Carla Narum, Wesley College

**2pm–2.30pm, 10-minute Q&A**

Carla Narum, Wesley College



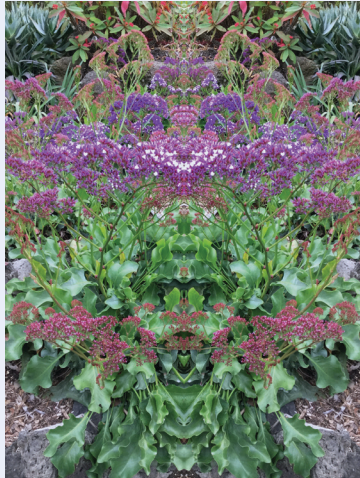
---

Amber Louw  
Focus 2022  
Oil on plywood  
50 x 60cm  
Wesley College, St Kilda Road

9 February–12 March  
Gallery Two

## Marley James Wright **Rocks and Trees**

Emerging artist Marley James Wright captures aspects of the natural environment in a powerful series of digital colour photographs. The artist's passion for the magic of the natural world is explored in his 'photographic morphs' of the Royal Botanic Gardens, Hanging Rock, the Grampians, Mornington and other locations in Victoria.



---

Marley James Wright  
*Green World 2016*

iPad photo taken and transformed on the spot  
at Royal Botanic Gardens Melbourne.  
56 x 42cm

Sunday 12 February

## **Let's Be Alexander: Children's Sculpture Workshop**

With Yaz Gaté of Tiny Cupboard Creatives

Have fun and learn new creative skills in this sculpture workshop with Yaz Gaté. Children will be inspired by the work of artist Alexander Calder and learn how to make free-standing sculptures using 'magiclay', plasticine, wire, paper and pipe cleaners.



**10am–12pm**

**Suitable for ages five to 12 years**

**All materials included**

**\$5, book online from Friday 27 January**

**[www.gleneira.vic.gov.au/gallery-programs](http://www.gleneira.vic.gov.au/gallery-programs)**

**Live Sunday Sessions**  
Sunday 12 February



**Performance by Monica Casaceli**  
2pm and 3pm (two 45-minute sessions)

Melbourne-based singer-songwriter Monica Casaceli will engage audiences with her indie pop style combined with folk music, powerful lyrics and acoustic sets. Immersed in music and art from a young age, Monica brings emotional maturity, honesty, simplicity and storytelling to her performance.



**Free, book online from Monday 23 January with limited walk-ups available on the day**  
[www.gleneira.vic.gov.au/gallery-programs](http://www.gleneira.vic.gov.au/gallery-programs)

Sunday 12 March

**Introductory Ikebana Workshop**  
With Shoso Shimbo

Join well-known Ikebana artist and sculptor Shoso Shimbo for an introduction to Ikebana. Learn about Ikebana as Shoso guides you through the basic skills around the meditative art of flower arranging. Take your Ikebana creation home with you.



**10am–12pm**  
**Suitable for adults**  
**All materials supplied**  
**\$5, book online from Monday 27 February**  
[www.gleneira.vic.gov.au/gallery-programs](http://www.gleneira.vic.gov.au/gallery-programs)



Live Sunday Sessions  
Sunday 12 March



**Performance by Shoehorn**  
2pm and 3pm (two 45-minute sessions)

*Shoehorn* is an acoustic jazz duo featuring Alice Bisschops on saxophone and James Lockwoods on double bass. Both artists trained at the Victorian College of the Arts and are highly experienced performers. Their performance will feature a range of musical genres including the *Great American Songbook*, bebop and bossa nova classics from some of the greatest jazz composers will entertain the audience.



**Free, book online from Monday 20 February**  
**with limited walk-ups available on the day**  
[www.gleneira.vic.gov.au/gallery-programs](http://www.gleneira.vic.gov.au/gallery-programs)

---

*Shoehorn*

17 March–30 April

Glen Eira Artists Society  
**Colour**

This annual exhibition explores imaginative interpretations of the theme of colour. Ranging from traditional landscapes and still life, to portraiture and urban scenes — the exhibition celebrates the wonderful talent in our community. Come and experience this showcase of paintings, drawings, photography, and sculpture by the artist members of the Glen Eira Artists Society and their shared passion for colour.



---

Lara Moisi  
*Old V Flower Vase 2022*  
Acrylic on canvas  
100 x 70cm  
Courtesy of the artist

17 March–30 April

Glen Eira Cheltenham Art Group  
**Diamond Anniversary Exhibition: 1963 to 2023**

This exhibition celebrates the 60th anniversary of the formation of the Glen Eira Cheltenham Art Group. It reflects their community spirit and ongoing aim to help foster the development of creative art in the City of Glen Eira and its surroundings. Immerse yourself in this display of fine art and vote for the *People's Choice Award*. The artists range in age from eight to 80+, and their works feature both traditional and contemporary styles in a range of media and subject matter.



---

Margaret Holloway  
*For the table 2022*  
Oil on canvas  
61 x 45.5cm  
Courtesy of the artist

17 March–30 April  
Gallery Two

Nina Waterval  
**Waterverf**



---

Nina Waterval  
*People's Boardwalk St Kilda Pier 2022*  
Watercolour on paper  
36 x 51cm  
Courtesy of the artist

Nature, colour and contemporary life are explored in this series of semi-abstract watercolours by local artist Nina Waterval. Prominent Melbourne landmarks and landscapes are referenced in her exhibition, along with a passion for watercolour.



Triston (Kurnai/Buandig)  
*Cockatoo Dreaming 2022*  
Acrylic on canvas. 58 x 48cm  
Courtesy of The Torch

5 May–4 June  
Gallery and Gallery Two

The Torch  
**Confined 14**

Presented by The Torch, *Confined 14* includes artworks by First Nations artists currently in or recently released from prisons in Victoria. Featuring around 400 artworks, *Confined 14* presents a strong visual metaphor for the over-representation of Indigenous peoples in the criminal justice system.

“Red-tailed black cockatoos are very rare birds. They don’t like the rain and have a mysterious way about them showing up here and there, it’s hard to see one up close. This painting is about my first time seeing a red-tailed black cockatoo when I was a kid.”

**Triston (Kurnai/Buandig)**

Sunday 14 May

## First Nations Weaving Workshop

With an artist from The Torch

Come and learn Indigenous weaving techniques with an artist from The Torch surrounded by the amazing works on display in the *Confined 14* exhibition.

Listen to the artist's family's stories about the cultural tradition of weaving and learn how to make a woven basket or a piece of jewellery.

**10am–12pm**

**Suitable for adults**

**All materials supplied**

**\$5, book online from Friday 28 April**

**[www.gleneira.vic.gov.au/gallery-programs](http://www.gleneira.vic.gov.au/gallery-programs)**



---

Sonia (Torres Strait Islands)  
*Connection to Country 2021*  
Raffia with feather & gumnuts  
10 x 29 cm

**Live Sunday Sessions**

Sunday 14 May



## Performance by Madi Coville Walker

**2pm and 3pm (two 45-minute sessions)**

Madi performs her beautiful easy listening original works with sincerity and a captivating voice. A proud Yorta Yorta Winyarr (woman) born and raised in her home country of Echuca/Moama, Madi writes songs that reflect not only her deep connection to land and culture, but also her journey as a young woman navigating the world. Recently nominated for the *Uncle Archie Roach Emerging Artist Award*, Madi can be discovered through her pop-up concerts and feature appearances at some of the biggest festivals in Australia.



**Free, book online from Monday 24 April**  
**with limited walk-ups available on the day**  
**[www.gleneira.vic.gov.au/gallery-programs](http://www.gleneira.vic.gov.au/gallery-programs)**

---

Madi Coville Walker

8 June–2 July

## 28th B'nai B'rith Jewish Youth Art Exhibition

The *28th Annual B'nai B'rith Jewish Youth Art Competition and Exhibition* aims to develop and enhance the artistic abilities of youth aged 11 to 18. This important annual exhibition showcases the innovative artworks created by talented Jewish youth, including drawings, paintings, multimedia, sculpture, digital media and photography.



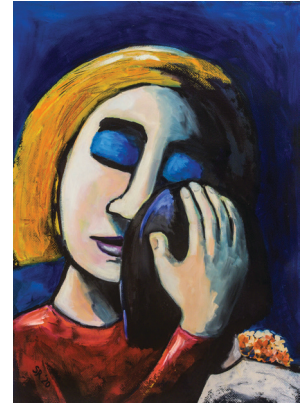
---

Chana Pesha Faigenbaum  
*Regality (portrait of the artist's mother) 2022*  
Oil on canvas. 60 x 45cm  
Award: Morrie Gold Memorial Prize

8 June–2 July  
Gallery Two

## Susie Raz **For the one whose voice was silenced**

Inspired by a 77-year-old letter uncovered during lockdown, Susie Raz created a series of paintings that tell the story of her family's persecution during World War II. The story centres around her great-grandmother Elsa, who tragically never received the landing permit that should have enabled her to join her son who had fled to Melbourne.



---

Susie Raz  
*Elsa and Anneliese 2020*  
Oil on paper  
80 x 60cm  
Courtesy of the artist

Live Sunday Sessions  
Sunday 11 June



## Performance by Rita Satch 2pm and 3pm (two 45-minute sessions)

Local musician Rita Satch will captivate the audience with her powerful vocals, and vibrant jazz and soul numbers.

Rita is a *2020 National Jazz Awards* finalist who has performed at world-renowned jazz festivals including *Glastonbury* and *Cheltenham* in the United Kingdom and has received prestigious accolades for her songwriting.



Enjoy an afternoon featuring new material from Rita's upcoming album alongside jazz classics. Rita will be joined by Daniel Mougerman on keys for this intimate performance.

**Free, book online from Monday 22 May  
with limited walk-ups available on the day  
[www.gleneira.vic.gov.au/gallery-programs](http://www.gleneira.vic.gov.au/gallery-programs)**

---

Rita Satch  
Photo: Ian Laidlaw

Sunday 11 June

## Contemporary Portraiture on Paper Workshop With Esther Erlich

Learn the principles of portraiture drawing with contemporary artist Esther Erlich. Working from photographs, the aim of the workshop is to enable greater creativity when it comes to drawing the face and discovering new techniques in which to develop your own personal drawing style.

**10am–12pm**

**Suitable for ages 15–20**

**Bring a photograph, all materials supplied**

**\$5, book online from Friday 26 May**

**[www.gleneira.vic.gov.au/gallery-programs](http://www.gleneira.vic.gov.au/gallery-programs)**



---

Esther Erlich  
*Audacious* 2019  
Charcoal, ink, soft pastel, paint  
and gold leaf on 300gsm Arches  
cold pressed watercolour paper  
150 x 120cm  
Courtesy of the artist

## Gallery Two

Gallery Two is a 20-square metre exhibition space located alongside the main Gallery with LED lighting and a flexible hanging system. The space is free for local emerging artists, schools and community groups to use and includes curatorial advice and installation assistance.

Visit [www.gleneira.vic.gov.au/gallery-hire](http://www.gleneira.vic.gov.au/gallery-hire)

For further information, contact the Gallery Co-ordinator/Curator on 9524 3214 or email Diane Soumilas at [arts@gleneira.vic.gov.au](mailto:arts@gleneira.vic.gov.au)

---

Gallery Two  
Tamar Dolev  
*Israel transcended through a lens*  
Installation view  
25 November – 18 December 2022





## About the Gallery

Established in 1975, Glen Eira City Council's Gallery presents a vibrant year-round program of exhibitions, workshops, talks and programs including free *Live Sunday Sessions* events. Showcasing work by established and emerging artists, collectives, schools and community groups — the Gallery aims to support a rich cultural life for Glen Eira residents and the wider community.

---

Glen Eira City Council Gallery  
*Celebrating Culture: Contemporary  
Indigenous Art*  
Installation view  
2 May–28 July 2019  
Photo: Mark Ashkanasy



# Glen Eira City Council gallery

Corner Glen Eira and Hawthorn Roads,  
Caulfield 3162  
Enter via Glen Eira Road

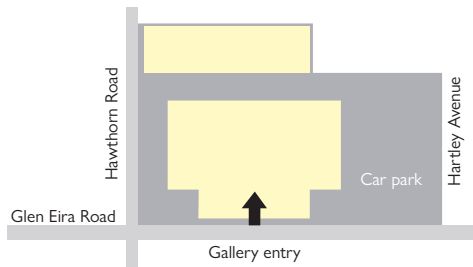
## Gallery hours:

Monday–Friday, 10am–5pm  
Saturday and Sunday, 1pm–5pm  
Closed public holidays  
Free admission



GLEN EIRA  
CITY COUNCIL

Bentleigh  
Bentleigh East  
Brighton East  
Carnegie  
Caulfield  
Elsternwick  
Gardenvale  
Glen Huntly  
McKinnon  
Murrumbeena  
Ormond  
St Kilda East



## More information:

[www.gleneira.vic.gov.au/gallery](http://www.gleneira.vic.gov.au/gallery)  
[arts@gleneira.vic.gov.au](mailto:arts@gleneira.vic.gov.au)


 /gleneiraarts

 @gleneiraarts

Scan the QR code to  
visit our website and sign  
up to our e-newsletter.



Public transport: tram route 64,  
bus route 623.

 The Gallery is wheelchair  
accessible. Accessible parking is  
available in the car park.

## Check before you come

Check the current opening  
times on our website or contact  
9524 3333