



GLEN EIRA
CITY COUNCIL

BENTLEIGH
BENTLEIGH EAST
BRIGHTON EAST
CARNEGIE
CAULFIELD
ELSTERNWICK
GARDENVALE
GLEN HUNTLY
MCKINNON
MURRUMBEENA
ORMOND
ST KILDA EAST

OUR COMMUNITY PRIORITIES FOR THE BENTLEIGH ELECTORATE



FROM THE MAYOR

I am pleased to present Glen Eira City Council's advocacy priorities for the seat of Bentleigh.

As we continue to rebuild our economy from the COVID-19 pandemic, Glen Eira has identified key projects and initiatives that will:

- > Support our community to rebuild, reconnect and restart the economy.
- > Ensure we are taking urgent and practical actions to mitigate our community against the impacts of climate change.
- > Build better transport connections to make it easier to move in and around Glen Eira.
- > Build a safer, healthier and more resilient community.

Through strong partnerships, we can make these critical projects a reality and deliver social, environmental, and economic benefits for our local community.

We urge you to contact us for a discussion and a tour so we can demonstrate the importance of these projects and initiatives to the Bentleigh electorate.

Cr Jim Magee
Mayor

jmagee@gleneira.vic.gov.au

Redeveloping the iconic and much-loved Carnegie Memorial Swimming Pool

A \$10 million contribution, adding to the commitment of \$15 million from the Federal Government, to support the \$52 million redevelopment of Carnegie Memorial Swimming Pool.

The [redemption of Carnegie Memorial Swimming Pool](#) is the highest priority advocacy initiative for Glen Eira and much loved and used by Bentleigh electorate residents.



Creating new open space in Mackie Road, Bentleigh East to address urgent community needs

\$3 million to fast-track new open space development at 64–66 Mackie Road, Bentleigh East.



Keeping our community safe

\$4 million to support the delivery of 31 road safety, walking and cycling improvements as part of the Pedestrian Safe Neighbourhood Project at Coatesville Primary School in Bentleigh East.



IMPROVING COMMUNITY ASSETS AND INFRASTRUCTURE



The opportunity:

A \$10 million contribution, adding to the commitment of \$15 million from the Federal Government, to support the \$52 million redevelopment of Carnegie Memorial Swimming Pool.



What we need:

The [redevelopment of Carnegie Memorial Swimming Pool](#) is the highest priority advocacy initiative for Glen Eira and is much loved and used by residents in the Bentleigh electorate. The new Federal Government has already committed \$15M towards this iconic project. Council is now seeking a commitment from the State Government of \$10M to support the completion of the redevelopment and ensure that it is a true partnership project between all three tiers of Government. The project is ready to commence in late 2022 once clearance to proceed is received from Heritage Victoria.

Community benefits:

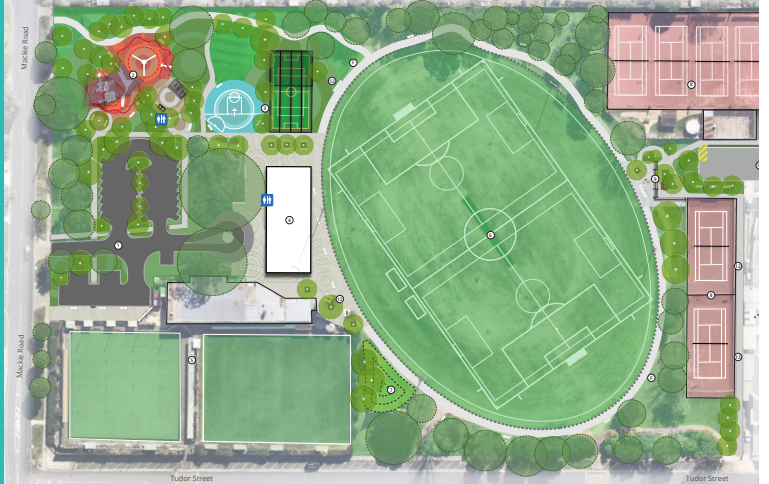
- > The pool will be a multi-functional community amenity providing opportunities to improve physical and mental wellbeing.
- > The pool will see more than 300,000 community visits annually, providing access for 2,800 learn-to-swim enrolments, 100,000 visits to the therapeutic warm water pool and hosting 30 annual school swimming carnivals and events.
- > The new facility will include increased open spaces, a café, barbecue, and shaded seating areas including places for recreational and social gatherings.
- > The project will generate around 100 jobs during the construction phase and 30 permanent new jobs once the facility is open.
- > The pool will be one of the most environmentally friendly and sustainable pools in the world. Funding will assist in achieving a 6-star Green Star rating with the pool designed for climate resilience, low energy operations and maximum water efficiency.
- > The revised design of the precinct will make the most of existing open/green space within the footprint.

DEVELOPING OUR OPEN SPACE



The opportunity:

Funding to help us fast-track the expansion, development and improvement of open space for the Bentleigh electorate.



What we need:

Open space is highly valued by the Bentleigh electorate and the seat of Bentleigh has been identified in the [Glen Eira Open Space Strategy Refresh \(2020\)](#) as having a number of key open space gaps.

Additional open space will provide greater accessibility for residents to pursue recreational activities that contribute to positive health and wellbeing outcomes. Glen Eira has the least amount of open space per person of any municipality in Melbourne and Council is focused on proactively acquiring, developing and unlocking public open spaces and places for Bentleigh residents.

Council has committed to spending \$26.9 million in acquiring new property for open space by 2025. This is a significant commitment to support a critical under-supply of publicly available open spaces.

We are calling on the State Government to contribute towards developing this new land into open spaces for our community including two signature developments:

- > \$3 million to fast track the development of actions from the [Mackie Road Reserve Masterplan](#) including the development of the new open space at 64–66 Mackie Road, Bentleigh East.
- > \$2 million to fast track the development of new open space at 15–19 Porter Road, Bentleigh.

Community benefits:

The electorate of Bentleigh has increasing open space needs. Restrictions associated with the COVID-19 pandemic highlighted the need for equitable provision of high quality active and passive open space to support our residents' mental and physical wellbeing. It will also enhance our effective response to climate change in supporting transport corridors, growing our urban forest and cooling the City.

One of our major challenges is providing the quantity of open space necessary to meet the needs of our community. The State seats within Glen Eira currently have the lowest amount of open space per capita in metropolitan Melbourne with 1.3 hectares for every 1,000 residents or 4.4 per cent of the total municipal area. With over 86 sporting groups using Council-owned open space, we are currently unable to accommodate the growth of existing clubs or the inclusion of any new clubs.

This funding will enable Council to improve the quantity and quality of public open space for our residents; develop, improve and maintain the amenity of our public places; and provide improved access to a mix of passive and active spaces that are inclusive, fit-for-purpose, and flexible to meet the needs of our diverse community.

RESPONDING TO THE CLIMATE EMERGENCY

The opportunity:

Funding commitments to support urgent and tangible climate action in Bentleigh, progressing towards our target of zero net Council emissions by 2025, and for our community by 2030.

What we need:

Support for our community across a range of practical climate change mitigation projects that progress our ambition to become net zero emitters.

Specifically we are seeking:

- > \$350,000 to expand the solar tubes system at GESAC.
- > \$200,000 to expand smart technology in our local street lighting by upgrading a further 1,000 lights to LED.
- > A commitment to co-invest (60%) in the upgrade of all 1,720 lights on major road to energy efficient smart technology to reduce emissions and save on energy costs (lights that are cost shared between councils and the State Government).
- > \$60,000 to install an additional charging station at the Bentleigh Library. This will provide convenient access to electric vehicle charging for residents from all parts of Glen Eira.
- > \$350,000 to implement key initiatives within [Glen Eira's Urban Forest Strategy](#), including the expansion of biodiversity footprints through in-fill tree and understorey planting in a number of Council parks. The funding will provide a vital first step to restore our tree canopy and acknowledge the vital contribution that urban forests make to the social, ecological and economic health and well-being of the local community.

MOORLEIGH RESERVE



ALNUTT PARK



BAILEY RESERVE



CENTENARY PARK



VICTORY PARK



Locations include:

Moorleigh Reserve, Bentleigh East
Alnutt Park, McKinnon
Centenary Park, Bentleigh East
Bailey Reserve, Bentleigh East
Victory Park, Bentleigh

Community benefits:

Like many councils, Glen Eira faces the ongoing challenges of moving to renewable energy, future proofing infrastructure and protecting the environment at the same time as meeting the needs of a growing population.

Increasing trees and vegetation across the Bentleigh electorate will provide a myriad of environmental, economic, social and health benefits which will contribute directly to the health and wellbeing of the community.

The implementation of priority actions under our [Climate Emergency Response Strategy Action Plan](#) will have significant positive community impacts such as:

- > reaching zero emissions for our Council and community, and doing our bit to address the root cause of climate change; and
- > ensuring our local community is safe, resilient and protected from the worst impacts of climate change.

IMPROVING INTEGRATED TRANSPORT AND CONNECTIVITY



The opportunity:

Funding commitments to improve the transport network to ensure safe, accessible and sustainable transport options for the Bentleigh community.



We are advocating for:

- > \$4 million in funding to support the delivery of 31 road safety, walking and cycling improvements as part of the Pedestrian Safe Neighbourhood Project at Coatesville Primary School in Bentleigh East.

This is an initiative of *Glen Eira's Integrated Transport Strategy* adopted by Council in 2018 and aims to create a safer, walkable environment that encourages active and independent travel as well as protecting and enhancing the amenity of the local area.

Works include:

- Raised threshold crossings;
 - Raised school (wombat) crossings;
 - Raised intersection crossings;
 - New separated bike lanes; and
 - Tree planting and landscaping.
- > Funding to develop the business case for a new light-rail route in Glen Eira, from Elsternwick to Clayton, along North Road, connecting East Village with Ormond station and the Monash National Employment Cluster
 - > Preparation of a business case to investigate the potential for a Trackless Rapid Transit (TRT) connection from Elsternwick to Clayton to service East Village along North Road.

Public transport is a critical part of ensuring communities remain liveable places as our population continues to grow. [Amendment C155 to the Glen Eira](#)

[Planning Scheme](#) for the new [East Village precinct](#), to run between North Road and Virginia Park in Bentleigh East, was approved by the Minister for Planning and gazetted on 31 March 2021.

East Village aims to deliver 3,000 new dwellings for 6,000 new residents, 4,500 new jobs, a new secondary school and new public open spaces. While these changes serve the future social and economic needs of our community, they will also bring additional transport demands in an area of our municipality which has minimal public transport available — both in terms of services and service frequencies.

The cluster is likely to grow in importance and play a role in future economic recovery. There are strong opportunities to support this strategic role by an improved connection for our community to this employment hub.

Community benefits:

Like many inner-city areas, Glen Eira is now reaching a critical tipping point, where the existing road network can no longer provide an easy, smooth run for vehicles that have historically made driving the more attractive option.

Glen Eira is one of the highest commuting councils in the state, with approximately 80 per cent of working residents working outside Glen Eira and 66 per cent of these residents commuting to work by car.

IMPROVING INTEGRATED TRANSPORT AND CONNECTIVITY

Community benefits: continued

In addition, the neighbourhood of Bentleigh East has the lowest amount of easily accessible public transport options compared to all other neighbourhoods in the municipality, creating greater car dependency, congestion and traffic on local streets that were not designed for it.

Seventy six per cent (52,964) of Glen Eira residents of working age travel outside of the municipality for work every day with 23.9 per cent (16,646) travelling to the Melbourne CBD.

Over recent years (to 2016), the total number of public transport users has increased by only 1,886 people (2 per cent of total users) or 376 people each year. The population of Glen Eira has grown by 7.5 per cent or 9,862 people over the same period.

Cycling as a form of commuting can relieve some of these pressures on our roads and public transport systems. However, only 1,023 Glen Eira residents indicated that they cycled to work (2016 figures).

There are significant benefits arising from reducing congestion and encouraging higher rates of usage of active transport (ie. walking, cycling and public transport). These include more time for family and socialising, better public health outcomes with people being more physically active and better outcomes for the environment with less pollution and carbon emissions.

Ultimately the Council aims to see a 50:50 share of car and non-car trips through the provision of convenient, effective, sustainable public transport options.





GLEN EIRA
CITY COUNCIL

Glen Eira City Council

Corner Glen Eira and Hawthorn Roads, Caulfield

Mail address: PO Box 42

Caulfield South, 3162

Phone: (03) 9524 3333

Fax: (03) 9523 0339

mail@gleneira.vic.gov.au

www.gleneira.vic.gov.au

National Relay Service

If you are deaf, hearing-impaired, or speech-impaired, we ask that you call us via the National Relay Service and then ask for (03) 9524 3333.

Online: <https://internet-relay.nrscall.gov.au>

Teletypewriter (TTY): 13 36 77

Speak and Listen: 1300 555 727

Social media

Glen Eira City Council:

www.facebook.com/GlenEiraCityCouncil

@cityofgleneira:

www.instagram.com/cityofgleneira

Glen Eira arts, gallery and events:

www.facebook.com/gleneiraarts

www.instagram.com/gleneiraarts

Glen Eira Leisure:

www.facebook.com/GESAConline

<https://www.instagram.com/gleneiraleisure>

www.twitter.com/GESAConline

Glen Eira Libraries and Learning Centres:

www.facebook.com/GlenEiraLibraries

<https://www.instagram.com/gleneiralibraries>

Glen Eira Sustainable Living:

www.facebook.com/sustainablelivinggleneira

Glen Eira Youth Services:

www.facebook.com/GlenEiraYouthServices

www.instagram.com/gleneirayouthservices