



GLEN EIRA
CITY COUNCIL

BENTLEIGH
BENTLEIGH EAST
BRIGHTON EAST
CARNEGIE
CAULFIELD
ELSTERNWICK
GARDENVALE
GLEN HUNTLY
MCKINNON
MURRUMBEENA
ORMOND
ST KILDA EAST

GLEN EIRA COMMUNITY SAFETY SNAPSHOT 2021



GLEN EIRA



A CARING CONNECTED
SAFER COMMUNITY

CONTENTS

INTRODUCTION	2
SOCIAL COHESION	3–4
CRIME	5
FAMILY VIOLENCE	6
ALCOHOL AND DRUG USE	7
GAMBLING HARMS	8
ROAD SAFETY	9
PUBLIC REALM SAFETY	10
YOUTH RESILIENCE	10
ONLINE SAFETY	11
HOUSING SECURITY	11
COVID-19 IMPACTS ON COMMUNITY	12

INTRODUCTION

Glen Eira City Council's *Community Safety Snapshot 2021* provides a point-in-time summary of community safety in the municipality. Community safety is vital, and Council works to establish a place that allows people to go about their daily lives without fear for themselves and enjoy a strong community that has high levels of participation.

The *Snapshot* contains information of community safety in Glen Eira in 2020–2021 where available. However, some results have been included from 2020 collated data.

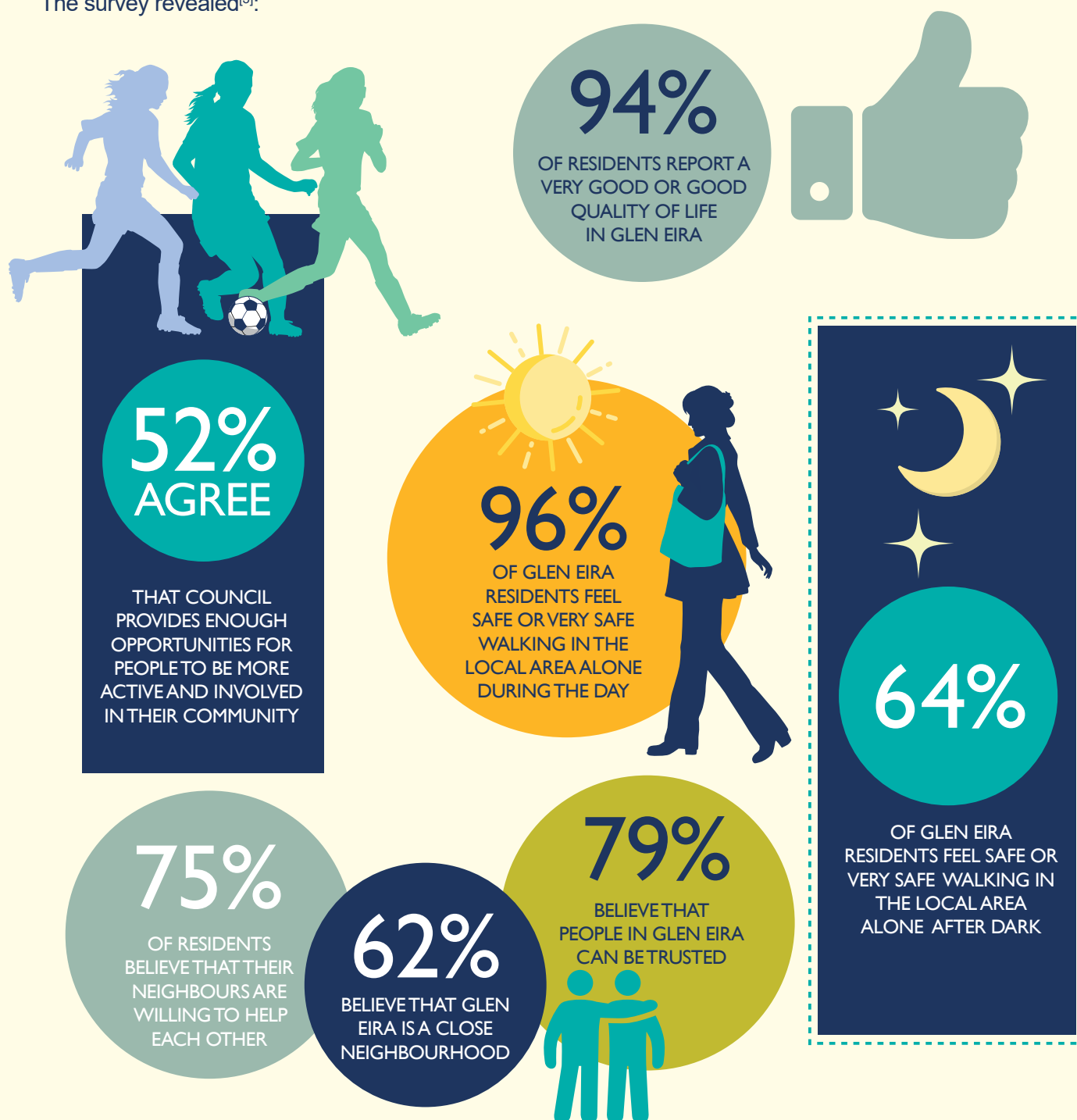
SOCIAL COHESION

Social cohesion is the resilience, connection and wellbeing of a community — it is the ‘glue’ that holds us together^[1].

A sense of belonging and participation contributes to a resilient community that is prepared to look after each other in times of crisis^[2], and promotes better health behaviours, lower crime rates and safety.

The *Local Government Community Satisfaction Survey*, conducted state-wide, has historically measured the community’s feelings of social cohesion. As the *Community Satisfaction Survey 2021* did not include such questions, results from the *2020 Survey* have been included.

The survey revealed^[3]:



[1] Australian Human Rights Commission (2015), *Building Social Cohesion in our Communities*

[2] Victoria, Department of the Premier and Cabinet, issuing body (2015), *Strategic Framework to Strengthen Victoria's Social Cohesion and the Resilience of its Communities*

[3] Glen Eira City Council (2021), *Community Satisfaction Survey Report*

SOCIAL COHESION

70% of residents believe providing education and information from experts on current issues impacting mental wellbeing in the community is extremely important, and 80% of residents believe providing and promoting information about services and activities available to people with disabilities is extremely important to ensure a healthy community.

While the *Local Government Satisfaction Survey* measures social cohesion, the *Community Confidence and Feelings of Safety Survey*, conducted by Glen Eira City Council, asks residents about their feelings of confidence around safety in Glen Eira. Through the *Community Confidence and Feelings of Safety Survey*, we found^[4]:

74%

OF RESIDENTS SUPPORT THE WAY THEIR LOCAL POLICE OFFICERS ACT



70%

OF RESIDENTS BELIEVE THEIR NEIGHBOURS ARE WILLING TO HELP THEM IF THERE IS DANGER

60%

OF RESIDENTS TRUST THEIR NEIGHBOURS WOULD CALL THE POLICE IF THERE WAS SUSPICIOUS BEHAVIOUR



CRIME

In 2021, Glen Eira had the third lowest crime rate in the Bayside Peninsula area, and the sixteenth lowest rate in all 79 Local Government areas^[5].

2021 CRIMINAL INCIDENTS

PER 100,000 PERSONS

3,858
GLEN EIRA

5,792
VICTORIA



THE MOST COMMON CRIMES IN GLEN EIRA IN 2021 WERE:

Steal from a motor vehicle **991**

Other theft **499**

Public health and safety offences **449**

Residential non-aggravated burglary **448**

Criminal damage **403**

Obtain benefit by deception **340**

Breach of family violence order **314**

Theft of a bicycle **220**

Steal from a retail store **192**

Family violence common assault **158**

GLEN EIRA 2021 — MOST COMMON CRIMES



THERE WERE
329 CRIMINAL INCIDENTS
RECORDED AT RAILWAY STATIONS IN GLEN EIRA IN 2020–2021, A RISE OF 17% FROM 2019–2020

INCIDENTS RECORDED

6,105

2019–2020

6,036

2020–2021

THE NUMBER OF INCIDENTS RECORDED IN GLEN EIRA DROPPED BY 1.13 PER CENT, FROM 6,105 IN 2019–2020 TO 6,036 IN 2020–2021.

INTERACTIVE DATA COLLATION MAP
YOURGROUND^[6] REPORTED

72 STREETS

MARKED AS UNSAFE IN GLEN EIRA

18

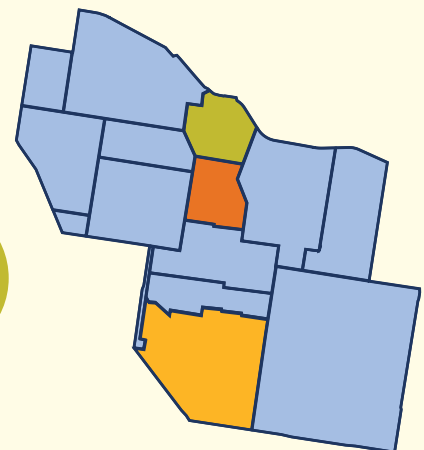
IN GLEN HUNTLY

13

IN CAULFIELD EAST

10

IN BENTLEIGH



[5] Crime Statistics Agency Victoria (2021), [Data Tables — Latest Crime Data By Area Data Visualisations — year ending June 2021](#)

[6] YourGround (2021), [YourGround Victoria Report](#)

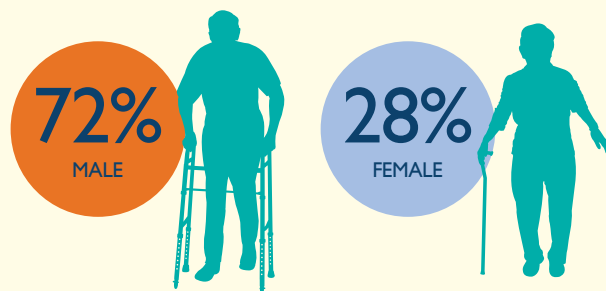
FAMILY VIOLENCE

Family violence has rippling impacts on both individuals and the community, and Council acknowledges the importance of reducing and preventing family violence and gender inequality in our community as a priority^[7].

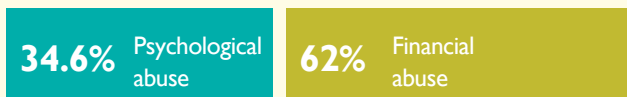
1,100 FAMILY VIOLENCE INCIDENTS IN 2020–2021



ELDER ABUSE VICTIMS



91% OF ELDER ABUSE IS COMMITTED BY A FAMILY MEMBER

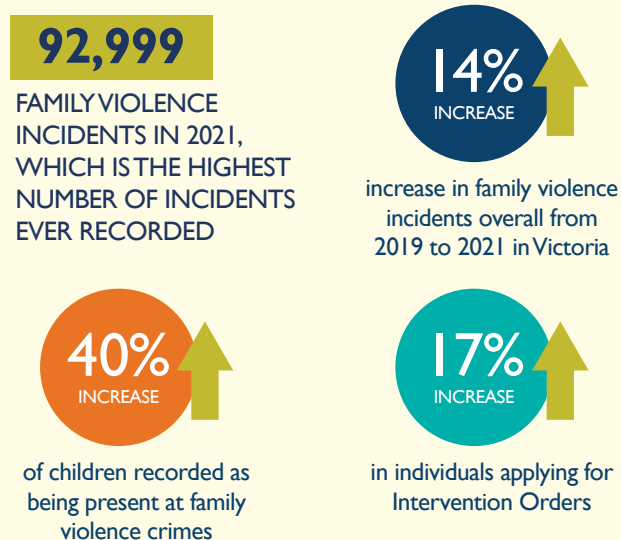


[8] [9]

“Research and evidence suggest that family violence can become more frequent and severe during periods of emergency. For many people, public health and community containment measures introduced to reduce the spread of COVID-19 such as social distancing and self-isolation, as well as increased financial insecurity and reduced ability to leave relationships, may increase their risk of family violence.” Domestic Violence Resource Centre Victoria^[9].

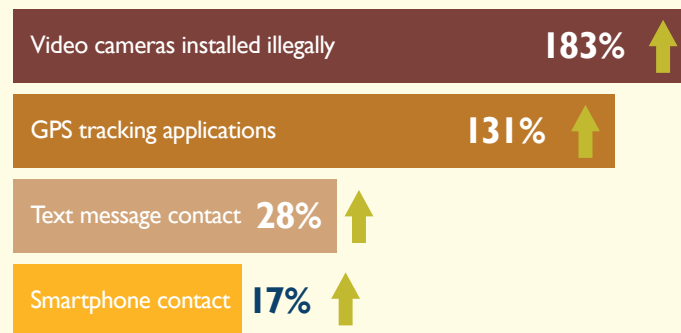
COVID-19 AND FAMILY VIOLENCE IN VICTORIA

The COVID-19 pandemic affected family violence in Victoria^[10] in the following ways:



TECHNOLOGY-BASED ABUSE

The Woman’s Services Network (WESNET) found that through the COVID-19 pandemic 2020–2021, 99.3% of service providers had clients that experienced technology-based abuse, higher than the previous findings in 2015^[11]. The following types of technology saw increased use through COVID-19:



[7] Royal Commission in to Family Violence (2016), *Royal Commission in to Family Violence: Final Report and Recommendations*

[8] Crime Statistics Agency Victoria (2021), *Data Tables — Latest Crime Data By Area Data Visualisations — year ending June 2021*

[9] *Domestic Violence Resource Centre Victoria*

[10] Crime Statistics Agency Victoria (2020), *Data Tables — Family Incidents Visualisation — year ending June 2021*

[11] The Women’s Services Network (2020), *The Second National Survey on Technology Abuse and Domestic Violence*

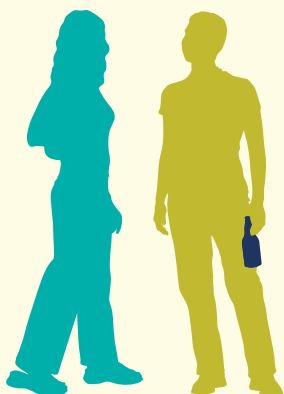
ALCOHOL AND DRUG USE

The impacts of drug and alcohol on an individual and a community are major, and can include criminal activity, deprivation of mental health, medical complications and violence^[12].

In 2021, Glen Eira had lower rates of alcohol and drug offences compared to Victoria^[13].

RECORDED INCIDENTS OF DRUNK AND DISORDERLY IN PUBLIC

52
2021



RECORDED DRUG-RELATED OFFENCES

EG. CULTIVATION, POSSESSION, USE AND DEALING OF ILLEGAL DRUGS

186
2021



RATE PER 100,000 PERSONS

33.2
GLEN EIRA

57
VICTORIA

RATE PER 100,000 PERSONS

118
GLEN EIRA

596
VICTORIA

THERE WERE
2,319 AMBULANCE ATTENDANCES

FOR ALCOHOL SUBSTANCE ABUSE
IN GLEN EIRA



THERE WERE
1,281 AMBULANCE ATTENDANCES

FOR ILLICIT DRUG SUBSTANCE ABUSE
IN GLEN EIRA

[14]



10%

OF RESIDENTS DRANK
MORE ALCOHOL
THROUGHOUT THE
PANDEMIC^[15]

The *National Wastewater Drug Monitoring Program* reported that in 2020 there were record high numbers of drug traces found in the Victorian water system (specifically cannabis, heroin and cocaine)^[16].

1,312

CALLS TO ALCOHOL COUNSELLING AND
REFERRAL SERVICES IN GLEN EIRA

1,364

CALLS TO DRUG COUNSELLING AND
REFERRAL SERVICES IN GLEN EIRA

[17]



[12] Australian Institute of Health and Welfare (2021), *Alcohol, tobacco & other drugs in Australia — Social Impacts*

[13] Crime Statistics Agency Victoria (2021), *Data Tables — Latest Crime Data By Area Data Visualisations — year ending June 2021*

[14] Turning Point (2021), *Alcohol and drug-related ambulance attendances in Victoria*

[15] Australian Institute of Health and Welfare (2021), *Alcohol, tobacco & other drugs in Australia — Impacts of COVID-19 on alcohol and other drug use*

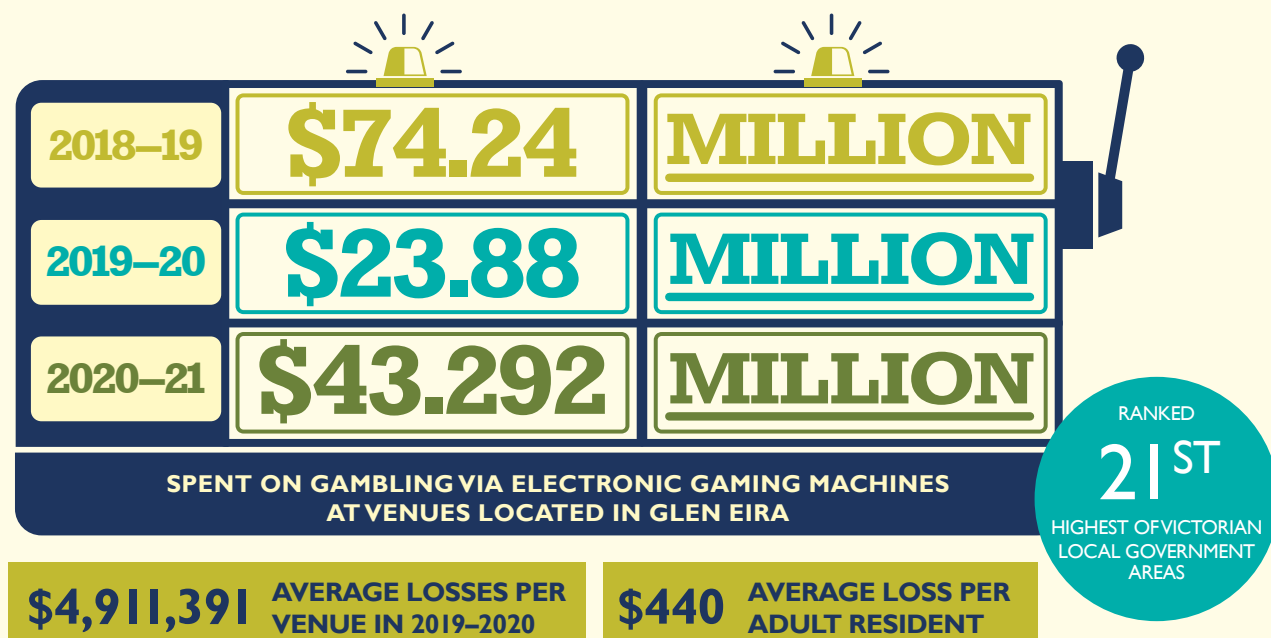
[16] Australian Criminal Intelligence Commission (2020), *National Wastewater Drug Monitoring Program Report 10, 2020*

[17] Turning Point (2021), *Alcohol and drug-related ambulance attendances in Victoria*

GAMBLING HARMS

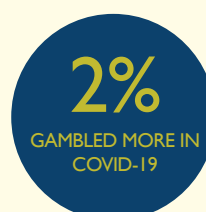
Gambling has rippling negative effects, and can lead to relationship difficulties, health problems and cultural problems, while also leading to significant community problems^[18].

Glen Eira has 11 gaming venues and 797 Electronic Gaming Machines (EGM). In 2021, Glen Eira's total net expenditure on EGM's was \$43,292,824^[19].



Although Glen Eira saw a much lower net expenditure on EGM machines in Glen Eira (\$23,888,482), 1 in 3 people identified that they took up online gambling for the first time in 2020. The proportion of those who gambled more than 4 times a week went from 23% to 32%, and young men aged 18–34 were the sub-population most likely to sign up for new online accounts^[20].

1 in 3 people took up gambling for the first time



[22]



GAMBLING ADVERTISING AGENCIES SPENT THE SAME AMOUNT OF MONEY ON ADVERTISEMENTS, BUT FOCUSED MAINLY ON ONLINE RACE BETTING, MARKETING AROUND SPORTING EVENTS AND NOVELTY BETTING^[21]

The prevalence of gambling practices in youth aged 12–17 was measured in 2017 by the Victorian Responsible Gambling Foundation and will again be measured in 2022. The results from 2017 found that^[23]:



have had their parents play or purchase for them



have gambled on horse or dog races



gamble at home or at the home of a friend



had visited a venue that month where gambling was available

[18] Victorian Commission for Gambling and Liquor Regulation

[19] Victorian Commission for Gambling and Liquor Regulation (2020), *Gaming expenditure by local area*

[20] Australian Institute of Family Studies (2020), *Gambling in Australia during COVID-19*

[21] Australian Institute of Family Studies (2020), *Gambling in Australia during COVID-19*

[22] Glen Eira City Council (2021), *Glen Eira Community Voice*

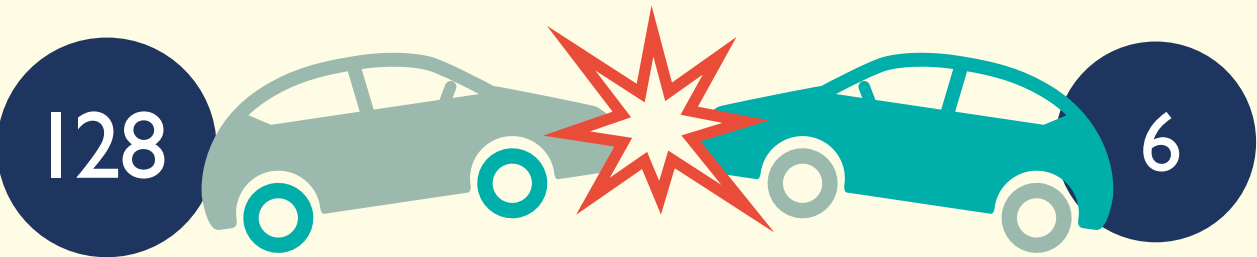
[23] Victorian Responsible Gambling Foundation (2017), *The prevalence and correlates of gambling in secondary school students in Victoria, Australia, 2017*

ROAD SAFETY

The number of road crashes involving injury in 2021 has decreased since 2020^[24].

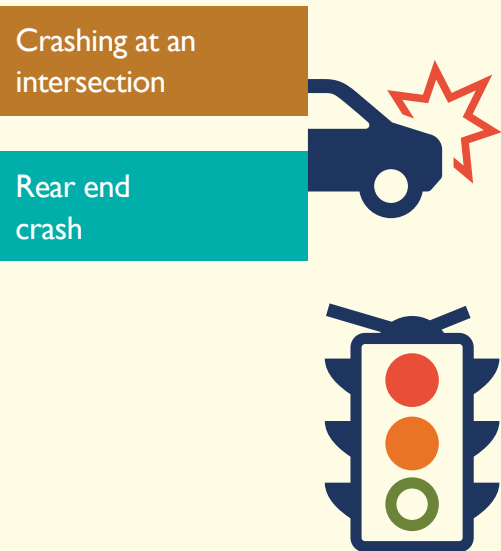
ROAD CRASHES INVOLVING INJURY IN GLEN EIRA

ROAD CRASHES INVOLVING FATALITY IN GLEN EIRA



61% of road crashes occurred in 60km/hr zones and the six fatalities occurred in 60km/hr and 70 km/hr zones. There were 19 serious injury bicycle accidents in 2020–2021, up from 4 in 2019–2020^[25]. There were 18 accidents involving pedestrians.

IN 2021, THE MOST COMMON FORM OF CAR ACCIDENT WAS:



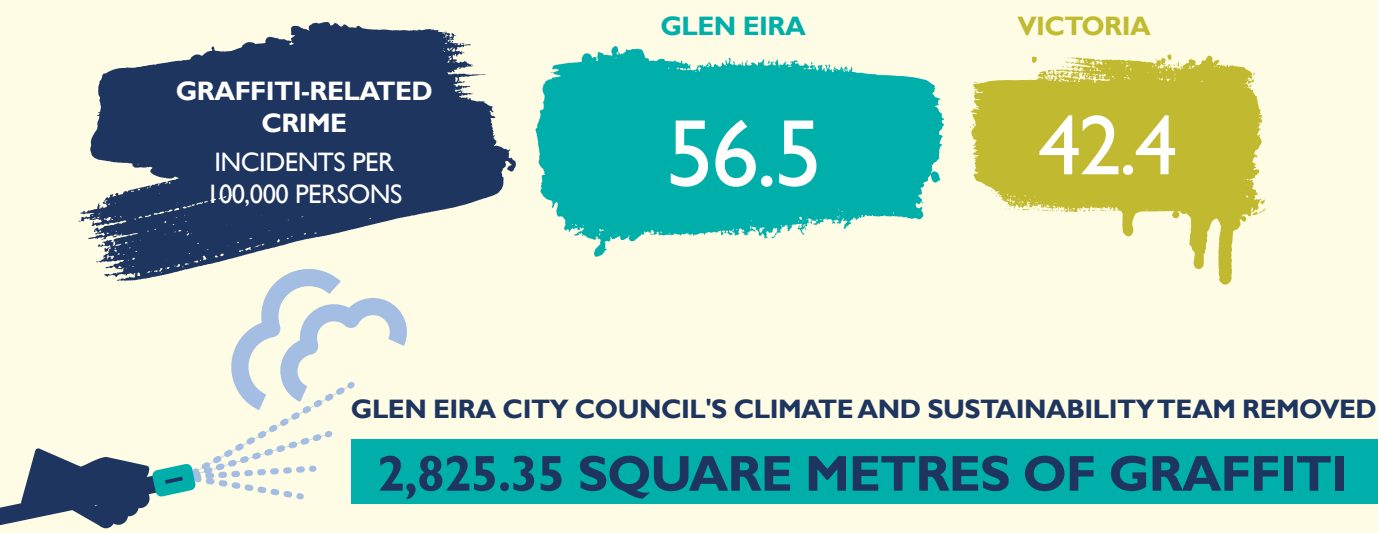
[24] Department of Transport (2020), data extracted from the Road Crash Information System (RCIS). Date accessed: November 2021

[25] WhistleOut (2019), [Australia's cycling safety statistics](#)

[42] VicRoads, data extracted from Crash Statistics. Date accessed: November 2021

PUBLIC REALM AMENITY

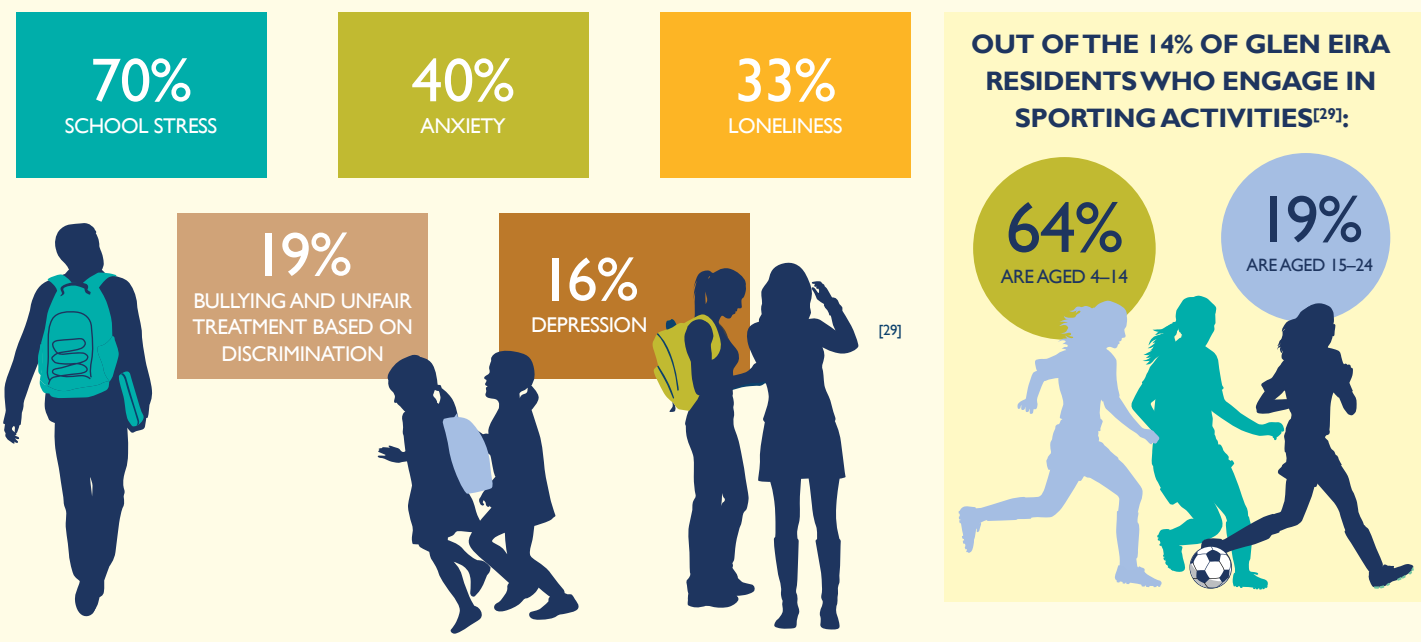
There were 89 graffiti-related crimes in Glen Eira in 2020 (data from 2021 currently unavailable), up from 80 from the previous year. This type of crime continues to be higher in Glen Eira (approximately 56.5 per 100,000 persons), compared to Victoria (42.4 incidents per 100,000 persons)^[26].



YOUTH RESILIENCE

Young people have the right to a full and productive life that ensures they grow in environments that build confidence, friendships and security^[27].

According to the 2020 Glen Eira Youth Survey^[28], when asked to identify the biggest issues faced personally as a young person:



[26] Crime Statistics Agency Victoria (2021), [Data Tables — Latest Crime Data By Area Data Visualisations — year ending June 2021](#)

[27] Department of Education and Early Childhood Development and Department of Human Services, Victoria (2010), [Protecting the safety and wellbeing of children and young people](#)

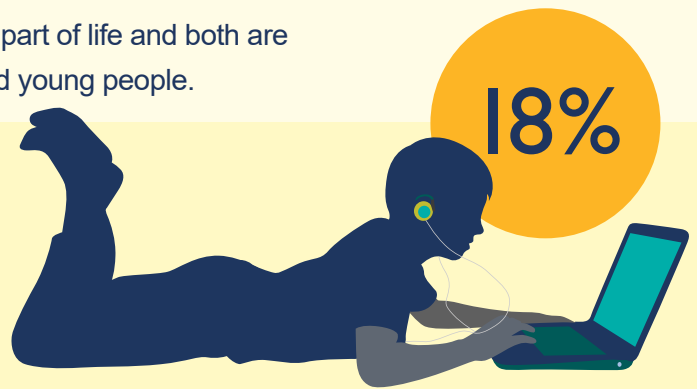
[28] Glen Eira City Council (2020), [Glen Eira Youth Online Survey 2020](#)

[29] [Greater Dandenong City Council](#)

ONLINE SAFETY

The internet and social media are increasingly a growing part of life and both are associated with risks to safety, particularly for children and young people.

GIVEN COVID-19 RESTRICTIONS, THE MOST UP TO DATE DATA AROUND YOUTH'S RELATIONSHIP WITH ONLINE SAFETY CAME OUT OF THE 2017 GLEN EIRA STUDENT RESILIENCE SURVEY. IT FOUND THAT ALMOST **ONE IN FIVE (18 PER CENT) OF YOUNG PEOPLE** HAD EXPERIENCED ONLINE BULLYING IN THE LAST 12 MONTHS^[30].



In 2020, Scamwatch reported 6,415 calls received detailing online scams mentioning COVID-19. There was more than \$9,800,000 in losses, and scams included phishing for personal information, online shopping and superannuation scams^[31].

In the 2021 *Community Feelings of Safety and Confidence Survey*, it was found that 51% of residents were worried about falling victim to an online scam or fraud. 15% of residents said they have fallen victim to a scam, online fraud or online harassment in the last year, and 29% said they know someone who has fallen victim to a scam, online fraud or online harassment in the last year.

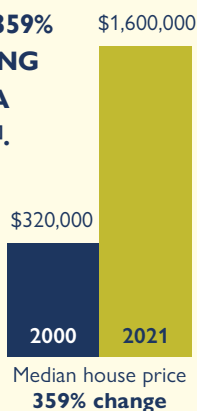
HOUSING SECURITY

Without housing security in Glen Eira, households may endure housing stress and homelessness, financial pressures and the loss of economic and social life in the municipality^[32]. There are 732 social housing dwellings located in Glen Eira in 2021, lower than neighbouring municipalities and lower than 2020^[33].



38% OF GLEN EIRA RESIDENTS ARE ON A VERY LOW INCOME, AND 4,145 HOUSEHOLDS ARE EXPERIENCING SEVERE HOUSING STRESS — PAYING OVER 50% OF THEIR INCOME ON RENT. 6,600 LOWER INCOME HOUSEHOLDS IN GLEN EIRA REQUIRE SUPPORT TO ACHIEVE HOUSING AFFORDABILITY.

THERE HAS BEEN A 359% INCREASE IN HOUSING PRICES IN GLEN EIRA FROM 2000 TO 2021^[34].



There are 6,600 lower income houses required to support achieving housing affordability. The *Glen Eira Social and Affordable Housing Strategy* has set a target to meet a rate of 3.3% by 2036^[34].



THE NUMBER OF HOUSEHOLDS IN VICTORIA IS PROJECTED TO ALMOST DOUBLE FROM 2.4 TO 4.6 MILLION FROM 2016 TO 2056. IT IS EXPECTED THAT GLEN EIRA'S POPULATION WILL GROW FROM 153,860 (2020) TO 188,210 (2036), AND THAT 71,000 NEW JOBS WILL BE CREATED IN THE INNER SOUTH EAST BY 2031^[35].

[30] Glen Eira City Council (2017), *Glen Eira Student Resilience Survey 2017 Report*

[31] Australian Competition and Consumer Commission, *Current COVID-19 (coronavirus) scams*

[32] Glen Eira City Council (2019), *Glen Eira Social and Affordable Housing Strategy 2019–2023*

[33] Department of Health and Human Services, Victoria (2020), *Department of Health and Human Services Annual Report*

[34] *Housing for the Future Symposium*

[35] Department of Environment, Land, Water and Planning, Victoria (2020), *Melbourne Industrial and Commercial Land Use Plan*

COVID-19 IMPACTS ON COMMUNITY

Australians faced many challenges to their health and wellbeing due to the COVID-19 Pandemic, which saw their health, safety, resilience and lifestyles threatened.

Glen Eira was impacted by the pandemic and the effects of communal lockdown in the following ways^{[36][37]}:

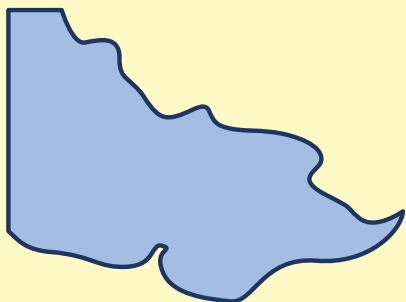


COMMUNITY ECONOMIC AND POPULATION IMPACT

In Glen Eira, the total monthly economic output of all industry sectors was \$888,163,000. As of March 2021, economic industry output is estimated at \$885,656 million — a 0.28% decrease. The greatest decrease in output is in Administrative & Support Services^[38].

According to Forecast.id, the COVID-19 pandemic may impact Glen Eira in the following ways^[39]:

Borders being closed, both internationally and domestically, will have impacts on the size of population growth. As **36%** of Glen Eira residents are born overseas, this is expected to have a negative impact.



THE NUMBER OF LOW-INCOME HOUSEHOLDS IS EXPECTED TO RAISE **16%**, AND THE SHARE OF HOUSEHOLDS UNDER HOUSING STRESS IS EXPECTED TO RAISE **10.5%**.



Deaths caused by COVID-19 are currently at very low levels. This is due to low overall case numbers; however, the number of deaths could increase in suburban areas if outbreaks were seen in areas with relatively large numbers of vulnerable elderly residents.

[36] Crime Statistics Agency Victoria (2021), [Data Tables — Latest Crime Data By Area Data Visualisations — year ending June 2021](#)

[37] Covid Live (2021), [Vic Cases LGA Glen Eira](#)

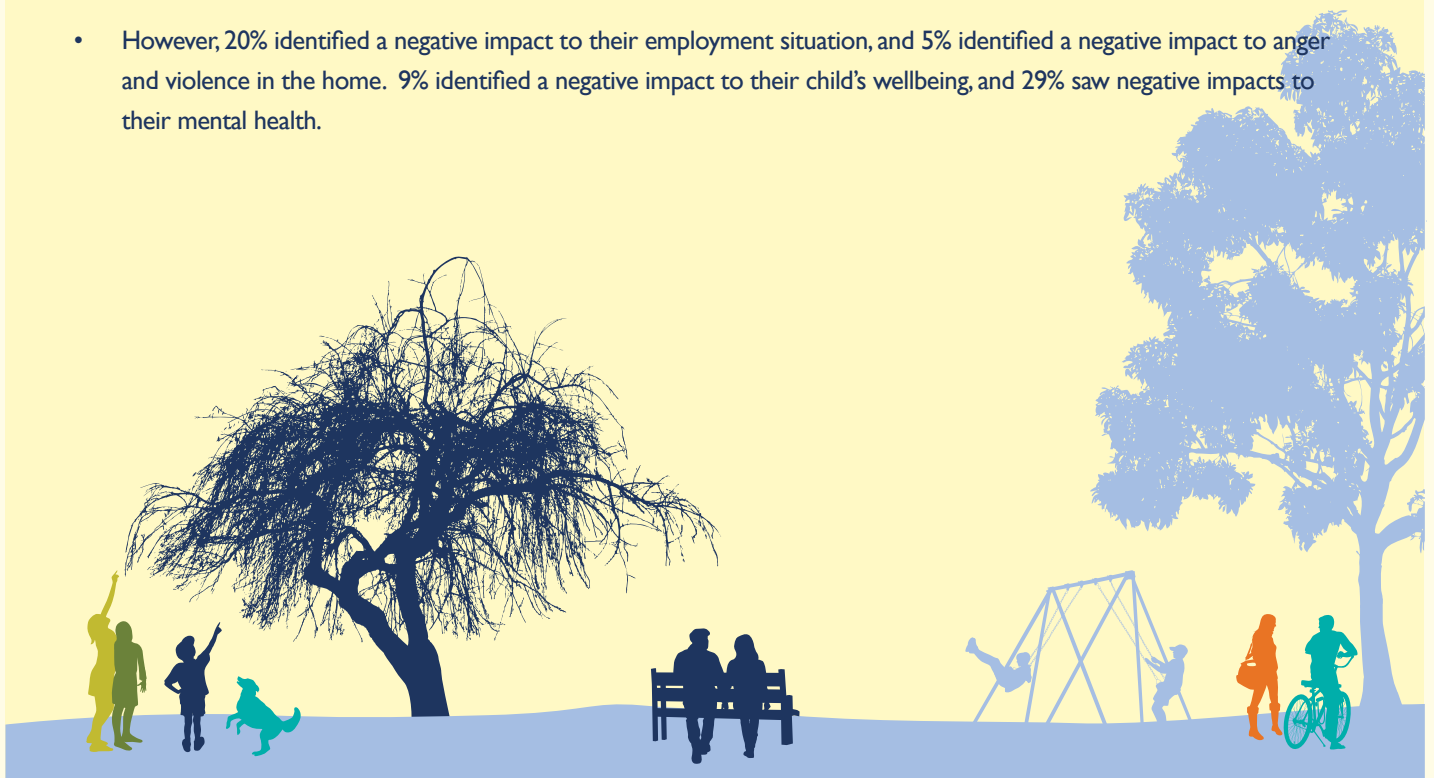
[38] Department of Jobs, Precincts and Regions, Victoria (2021), [Economy, Jobs and Business Insights — Glen Eira](#)

[39] Forecast.id (2020), [City of Glen Eira — Impact of COVID-19 on population growth](#)

COMMUNITY FEELINGS IMPACT

In November 2020, Glen Eira City Council conducted a COVID-19 impact survey^[40] through *Community Voice*. Social impact compared from before and after the COVID-19 restrictions identified by residents as follows:

- 32% are more satisfied with their life as a whole post COVID-19, and 30% feel about the same. 37% feel less satisfied.
- 31% feel more satisfied with feeling apart of their community post COVID-19, and 35% feel about the same. 33% feel less satisfied.
- 27% are talking to their neighbours more frequently, while 57% talk to their neighbours about the same amount. 15% identified talking to their neighbours less.
- When asked about sentiments toward community strength post-Covid, 89% agree their neighbourhood is a good place to live, and 80% feel they trust their neighbours. 60% believe people worked together to get things done for their community.
- When asked about change due to COVID-19 in the community, 41% of participants identified a positive uptake in time for hobbies and family.
- 79% identified no change to access to food, 81% identified no change in access to housing, 70% identified no change in access to medical services.
- However, 20% identified a negative impact to their employment situation, and 5% identified a negative impact to anger and violence in the home. 9% identified a negative impact to their child's wellbeing, and 29% saw negative impacts to their mental health.



[40] Glen Eira City Council (2021), [Glen Eira Community Voice](#)



GLEN EIRA
CITY COUNCIL

Glen Eira City Council

Corner Glen Eira and Hawthorn Roads, Caulfield

Mail address: PO Box 42

Caulfield South, 3162

Phone: (03) 9524 3333

Fax: (03) 9523 0339

mail@gleneira.vic.gov.au

www.gleneira.vic.gov.au

National Relay Service

If you are deaf, hearing-impaired, or speech-impaired, we ask that you call us via the National Relay Service and then ask for (03) 9524 3333.

Online: <https://internet-relay.nrscall.gov.au>

Teletypewriter (TTY): 13 36 77

Speak and Listen: 1300 555 727

Social media

Glen Eira City Council:

www.facebook.com/GlenEiraCityCouncil

@cityofgleneira:

www.instagram.com/cityofgleneira

www.instagram.com/gleneiraarts

Glen Eira arts, gallery and events:

www.facebook.com/gleneiraarts

Glen Eira Leisure:

www.facebook.com/GESACOnline

<https://www.instagram.com/gleneiraleisure>

www.twitter.com/GESACOnline

Glen Eira Libraries and Learning Centres:

www.facebook.com/GlenEiraLibraries

<https://www.instagram.com/gleneiralibraries>

Glen Eira sustainable living:

Glen Eira Youth Services:

www.facebook.com/GlenEiraYouthServices

www.instagram.com/gleneirayouthservices

