



GLEN EIRA  
CITY COUNCIL

- BENTLEIGH
- BENTLEIGH EAST
- BRIGHTON EAST
- CARNEGIE
- CAULFIELD
- ELSTERNWICK
- GARDENVALE
- GLEN HUNTLY
- MCKINNON
- MURRUMBEENA
- ORMOND
- ST KILDA EAST

# GLEN EIRA 2040 COMMUNITY VISION



# Acknowledgements

## **Our Traditional Owners**

Glen Eira City Council acknowledges the Boon Wurrung people of the Kulin Nation as the Traditional Owners of the City of Glen Eira. We respect and recognise Aboriginal and Torres Strait Islander peoples' history and heritage and their continuing spiritual connection to the land and seas. We value their living culture and practices and their right to self-determination. We pay respect to their Elders, past, present and emerging.

## **Our Deliberative Citizens' Panel**

Glen Eira City Council acknowledges the commitment, creativity and hard work of the 32 residents who volunteered to be on the Deliberative Citizens' Panel. They were randomly selected to work together to develop the *Glen Eira 2040 Community Vision*. They undertook this task with enthusiasm, respect, passion and integrity. We are proud of the future vision they have created.

## **Our community**

We acknowledge the contributions of more than 3,000 community members who participated in a variety of engagement activities to share their views and aspirations on their vision of the future of Glen Eira. We thank you for helping make our City what it is and what we aspire it to be in the future.



# Contents

|  |           |
|--|-----------|
| <b>Foreword</b>  | <b>5</b>  |
| <b>Part one: As prepared by the Glen Eira<br/>Deliberative Citizens' Panel 2020/2021</b> | <b>7</b>  |
| <i>Community Vision</i>  | 8         |
| Principles   | 11        |
| Minority reports   | 23        |
| <b>Part two: Glen Eira City Council Report</b>   | <b>25</b> |
| Process and Project Background   | 25        |
| Community engagement process   | 29        |
| Glen Eira 2040 Panel Roadmap   | 42        |
| Background information   | 44        |
| Profile of Glen Eira   | 47        |



### Message from the Mayor

**I am proud to present you with the first long-term community vision for the City of Glen Eira. A *Community Vision* developed by the community for the community.**

The *Glen Eira 2040 Community Vision* was informed by a wide community engagement program that captured the aspirations and priorities of thousands of our citizens and stakeholders; local people representing diverse backgrounds, ages and suburbs.

The work of the Deliberative Citizens' Panel was central in developing the *Vision* before you. Thirty two local community representatives worked closely together to create our Vision Statement and principles. Their task was a challenging one; they had to understand what members of the broader community had told us; analyse information and data; and collectively develop a long-term vision that could meet the current and future needs of our City.

I congratulate them for developing this *Community Vision* that will serve as the roadmap for our City in the future.

Cr Margaret Esakoff



### Message from the CEO

**The *Glen Eira 2040 Community Vision* provides Council with a solid foundation for Council's future planning and resource allocation. It will guide Council to deliver on what our community most values for the future.**

We are grateful for the time and effort many of you gave to voice your aspirations for the future of Glen Eira. I thank the Deliberative Citizens' Panel members for their commitment to produce an impressive *Community Vision* that is representative of a diverse and growing Glen Eira community.

For Council, delivering this *Vision* is not something we can achieve in isolation. Shared decision-making and effective working partnerships with government, non-government organisations, businesses and of course, our community will be critical to our success.

Through the development of our *Council Plan* every four years we will work towards achieving our *Community Vision*.

I look forward to working with our community to bring our *Community Vision* to life.

Rebecca McKenzie



## What is a community vision?

An aspirational description of what a community values and wants for the future of the place and community they live in.

# Foreword

In June 2019, Glen Eira City Council took the first steps to facilitate the development of a *Community Vision*; a vision that would shape the future of Glen Eira based on the values, priorities and aspirations of the Glen Eira community.

From this earliest point, Council was determined that the *Community Vision* would be written by the community for the community.

This *Community Vision* has been produced by 32 randomly selected Deliberative Citizens' Panel members, broadly representing the Glen Eira community. It has been a meaningful and rewarding community engagement journey. These diligent panel members worked together for 40 hours, over multiple days, face-to-face and online, to produce a vision that gives voice and meaning to the breadth of aspirations, values and priorities shared by the people of Glen Eira.

### **This *Community Vision* belongs to you, the community of Glen Eira.**

As the enablers of this plan, we are delighted to present to you the *Glen Eira 2040 Community Vision* which will serve as an important guiding document for Council in all its future strategic planning. It will also influence the work of our community organisations, businesses and anyone wanting to contribute to the future of Glen Eira.

The next section outlines the Deliberative Citizens' Panel's *Community Vision Report* in its entirety.

The *Community Vision Report* contains:

- One vision statement.
- Six principles that received 'super majority' support from the panel (ie. 80 per cent or more of panellists' support).
- Two minority reports that outlined some further commentary that the panel felt should be noted.





Or the 'Q' action that the community has told us is their priority today?

What you have told us so far ...

SO FAR YOU'VE TOLD US THAT IN 2040 YOU WANT GLEN EIRA TO BE:

2040

Which two things are the most important to you in the future?

OUR COMMUNITY HIGH-LEVEL ROADMAP

2040

ChatterVOTEbox



Part one: As prepared and written  
by the Glen Eira Deliberative  
Citizens' Panel 2020/2021

# THE GLEN EIRA 2040 COMMUNITY VISION

In March 2020 we were charged with the job of coming up with a vision for Glen Eira that will shape what the community will look like by 2040. We were interrupted by COVID-19 but that didn't stop us. We resumed via Zoom and we have come up with the following recommendations.

This report was put together by a Deliberative Citizens' Panel, made up of 32 randomly and independently selected residents of various backgrounds, who are hoping to build on the success of what Glen Eira has been to date and for a better future.

We hope this *Vision* and its principles are kept front of mind when making decisions and evaluating projects and initiatives, and that this is used as a blueprint for the *Council Plan*.

We are thankful for this process and hope that Council does this more often with future projects.

## Community Vision

‘Our Glen Eira:  
A thriving and  
empowered  
community working  
together for an  
inclusive and  
sustainable future.’





Groove and Graze in Hopetoun Gardens, November 2019





Party Under the Stars, January 2020



## Principle one:

# WE WORK TOGETHER

Council and Glen Eira residents will always work together in collaboration to ensure fair and equitable decision-making.

We make and communicate transparent decisions for the future of the City that genuinely represent the views of citizens.

Council to implement robust consultative processes and foster opportunities for all residents to be involved in working for the betterment of the community.

The community is engaged in the planning submission and approval process and community needs/priorities are taken into account.

### **Rationale**

Partnerships must be forged and maintained between citizens<sup>1</sup> and Council to achieve the best possible decisions for the community. Honest transparent communications to ensure Council actions are in the communities' best interests.

Ensure participation by a diverse group of people of all ages, races, abilities and genders, who don't have a history of involvement in Council activities and public participation are given a chance to get involved. This ensures that not only the loudest voices are heard but a breadth of community voices are heard.

---

1. Citizen, in this context, includes all those that reside, own, work in Glen Eira and other users of Glen Eira facilities.



## Principle two:

# PLANNING FOR COMMUNITY RESILIENCE

Our Glen Eira must be adaptable to address social, natural, economic and environmental futures, in particular climate change.

Council and Councillors must operate at all times under the core concepts of accountability and responsiveness, reliability and transparency for the whole community.

### **Rationale**

The community, Council and Councillors require regulations that are adaptable to changing demands and emerging issues.

Planning must enhance the overall wellbeing of our community by addressing future social dynamics. For example, planning for infrastructure needed by different groups such as children, aged care users and families.

Policy decisions should reflect community needs more thoroughly and be tested regularly.

For example, public transport will be dramatically changed in the future. Council should be actively engaged in lobbying to better connect Glen Eira to the network.

As we are dealing with uncertainty, the current situation has shown that we need to be able to deal with the challenges of new events ie. climate change.

Encouraging the support of local businesses and services by promoting the local economy.





Volunteers at Tony's Café, Carnegie, May 2020





Cycling Without Age, Caulfield Park, November 2019





## Principle three:

# INCLUSIVE AND HEALTHY COMMUNITY

All members of our Glen Eira community feel a strong sense of belonging and feel safe with equitable access to all public resources.

As a diverse community we draw attention to: First Nations peoples, elderly, people with disability, cultural groups, refugees, disadvantaged groups, LGBTIQ+, youth and other diverse populations and minorities.

Our community health is supported by every effort for every person to achieve optimal physical and mental wellbeing.

### **Rationale**

Ensuring that First Nation peoples and aspirations are recognised as central to our community life.

Post COVID-19 lessons learnt, especially that mental and physical health are key pillars to a thriving community.

The awareness of the importance of community — through compassion and humanity for example; remembering key historic events that affect our community.

## Principle four:

# MAXIMISE AND DIVERSIFY OUR GREEN AND NATURAL SPACES

Preserve, regenerate and maximise green and natural spaces and develop connected green areas across Council boundaries (in both private and public spaces), in consultation with First Nations peoples.

### **Rationale**

Ensure the wellbeing of our community, which depends on a life-promoting, flourishing environment. Co-operate beyond Council boundaries to connect green space and habitats together ie. borrow space from other councils.

Promote sustainability by creating and encouraging innovative green space/habitats eg. roof gardens, vertical gardens, community gardens in planning applications and public spaces.

Encourage a diverse ecosystem by planting and maintaining a greater variety of native trees and shrubs, and promoting the opportunity to plant your nature strip, for a diverse ecosystem.







Glen Eira Emergency Climate Action Network, June 2020





Community voices activity during Community Vision engagement, February 2020



## Principle five:

# WE ARE PROACTIVE IN MEETING CHALLENGES AND INNOVATE USING EVIDENCE-BASED METHODS

**Proactive action:** Continually and proactively working towards the betterment of the community and the Glen Eira environment.

**Evidence-based:** Trialling innovative programs using evidence-based methods.

**Overall:** Finding innovative, effective and creative solutions pre-emptively for the long-term monitored sustainability and wellbeing of the community.

### **Rationale**

Proactive action from Council is needed to work towards the sustainability of the Glen Eira community continuously, not waiting for alarming indications of a need for action.

Trials are designed in co-ordination with academics to collect evidence-based data before expanding to the wider community. Fast-track tested and proven best practices from around the world.



## Principle six:

# PROMOTE AND DEVELOP OUR CREATIVE POTENTIAL, CELEBRATING OUR DIVERSE IDENTITIES THROUGH ART AND OTHER CULTURAL EXPRESSION

Commitment to facilities and spaces being available and accessible to all ages and abilities to express themselves creatively and freely.

Celebrating the artistic and cultural diversity in our community including the evolving cultural values and established traditions of our First Nations peoples.

For example, introduce an annual *Glen Eira Creative Excellence Art Prize* to celebrate residents' cultural expression, (art, sculpture, crafts, robotics, photography, music, dance, food, language, woodworking, literature, poetry, etc) as well as developing a 'Community Hub' where individuals and groups can explore and enhance their skills.

### **Rationale**

Greater Council resourcing will enable an empowered community that reflects on who we are, and what we are experiencing.

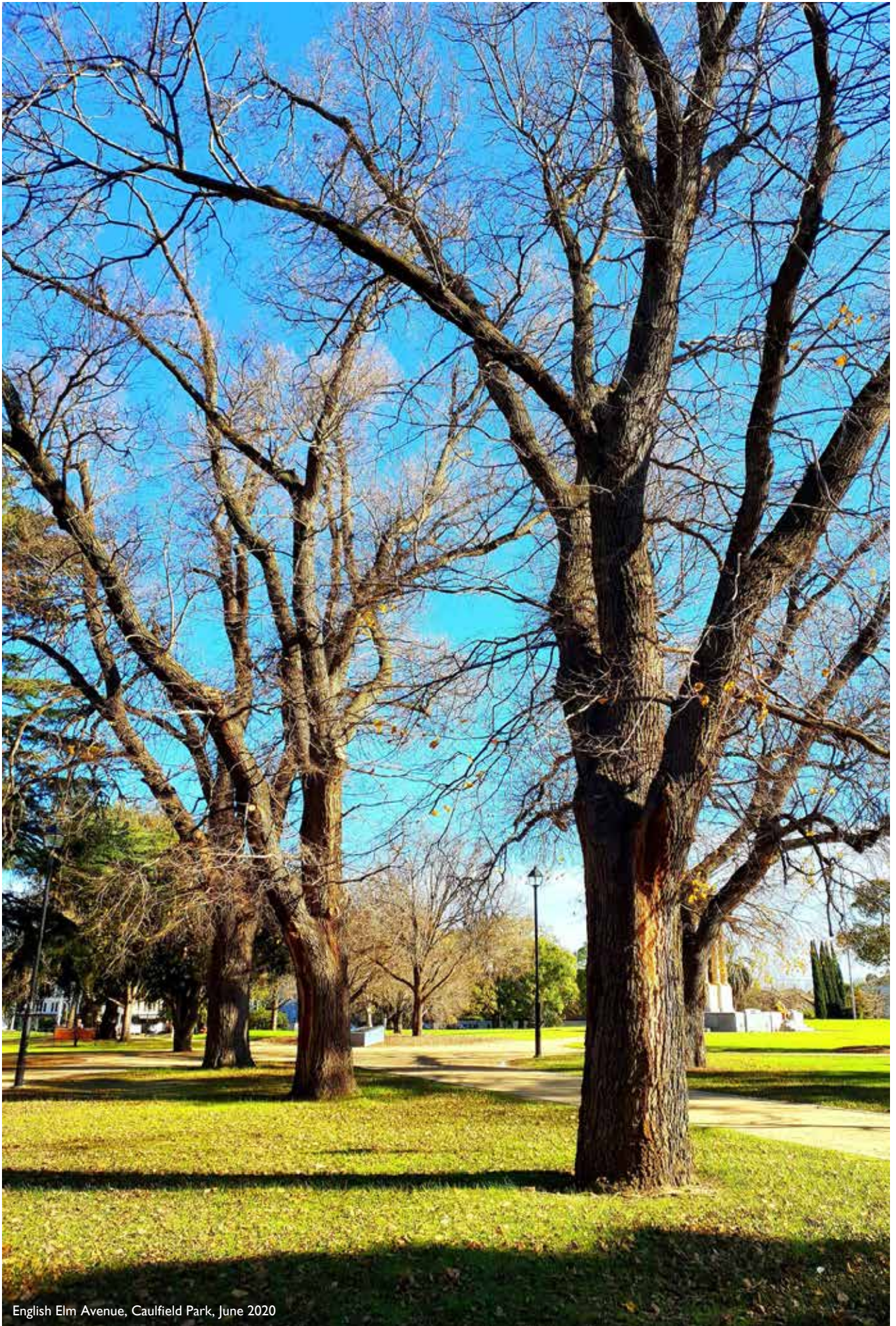
Our personal wellbeing is enhanced by having access to stimulating art forms and activities.





Youth Art Expo, October 2019





English Elm Avenue, Caulfield Park, June 2020



# Minority reports

## Minority Report One — Limitations of action-oriented principles

Some principles seem more action-oriented than aspirational and value-based, ie. principle four: Green Space.

### Comments we would like noted:

The intention of the principle becomes too narrow and may not hold up in 20 years as a stand-alone

### Principle four: Green Space

- Recommend: broader ideas of ecological integrity and experiences.
- Connection with nature. We care for country eg. we can actively connect with our natural environment.
- Connecting different groups in the community across boundaries of age, ethnicity etc.
- Uplifting people through a shared experience.

## Minority Report Two — Defining the intent of Sustainability

The definition of sustainability used in the vision might be unclear as it wasn't defined further in any of the principles.

### Comments we would like noted:

The classic definition of sustainability can be defined as development of the present without compromising the ability of future generations to meet their own needs. We are going beyond the classic definition and looking at 'doing more good' than only aspiring to do less harm.

Sustainability underpins every principle that we nominated and should be applied in every decision and action that is made.

Sustainability is more than a box to tick — it needs to be thought about and proactively applied for the future of our community.





# What will Glen Eira look like in the future?

Share your thoughts here or online at  
[www.haveyoursaygleneira.com.au](http://www.haveyoursaygleneira.com.au)

# Part two: Glen Eira City Council Report

## PROCESS AND PROJECT BACKGROUND

This section provides a snapshot of the community engagement and panel process and some of the background information used to support the development of the *Community Vision* by the Deliberative Citizens' Panel.

### **Independent consultant support**

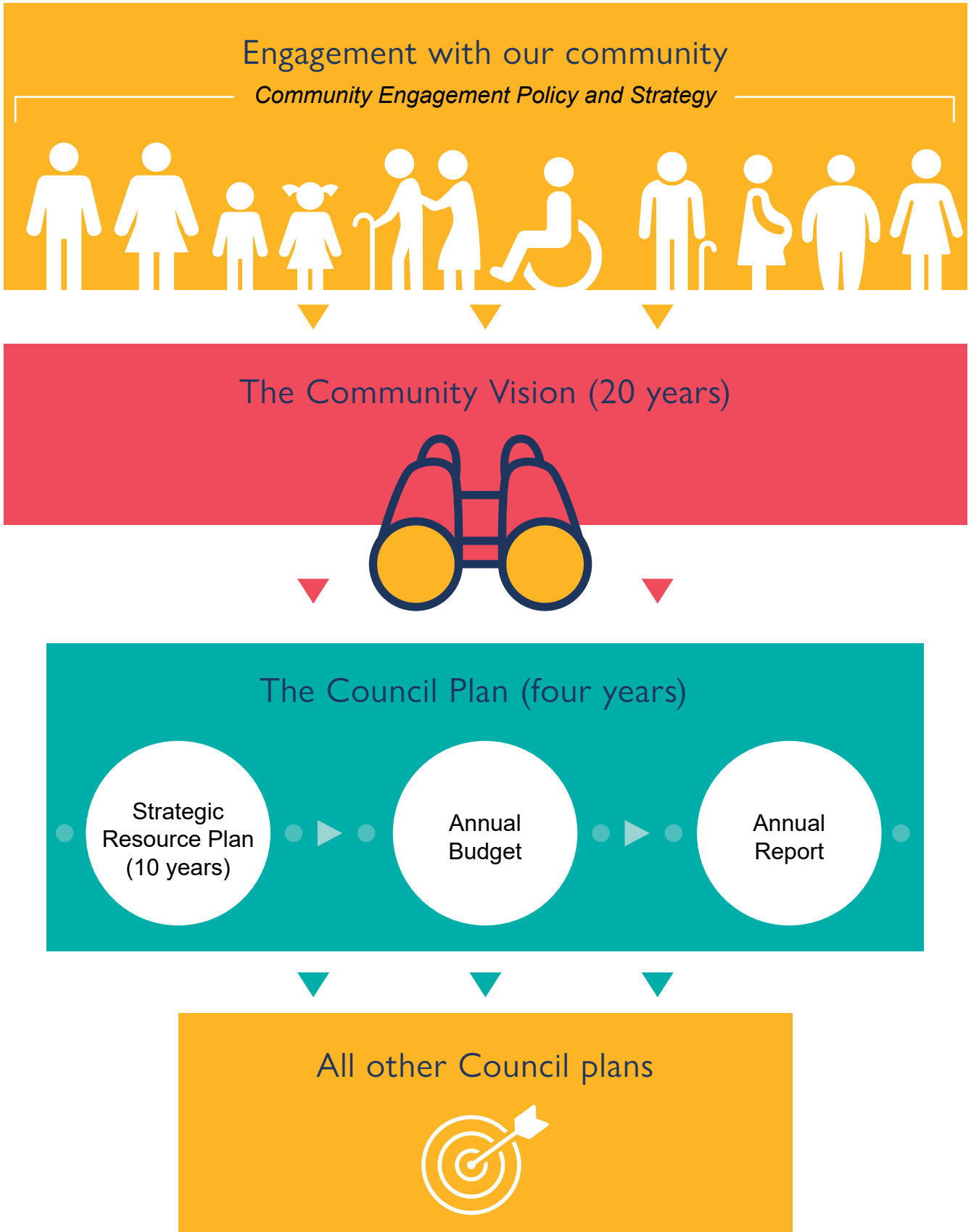
Glen Eira City Council worked with several independent consultants including MosaicLab, Activate Consulting Group (incorporating Chatterbox and Cochrane Research Solutions) and Deliberately Engaging to ensure a robust, impartial and wide-reaching community engagement program was delivered to inform the development of the *Community Vision*.



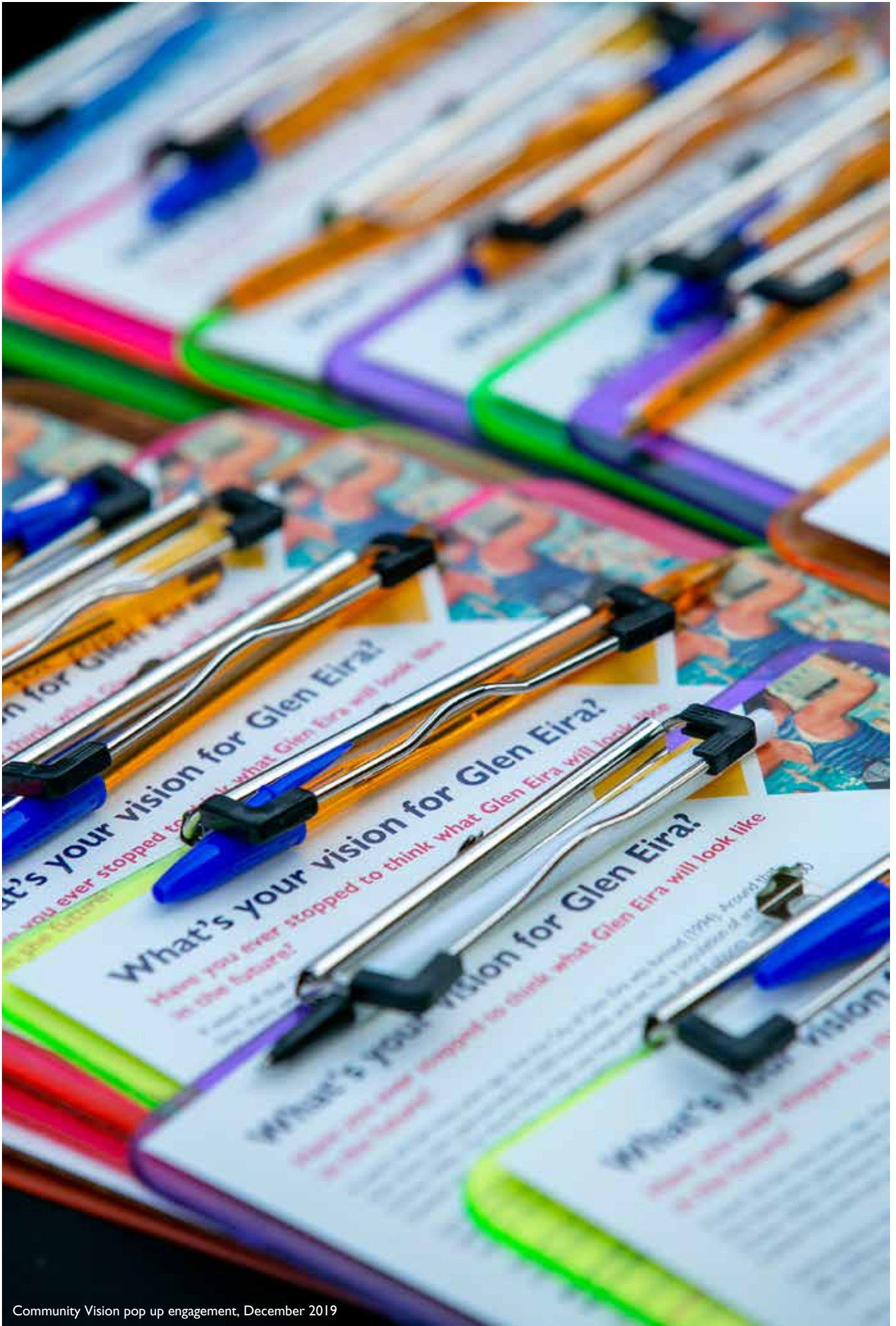


What we love about Glen Eira activity during Community Vision engagement, February 2020

Outline of *Community Vision* influence on Council planning and engagement







Community Vision pop up engagement, December 2019

# Community engagement process



## Co-design workshop

June 2019

The community engagement process began in June 2019, starting with a co-design workshop facilitated by MosaicLab. Over two sessions, a group of 25 Council representatives and key community leaders came together to develop the broader engagement plan to inform the development of a *Community Vision*. Key stakeholders included Council's Community Engagement Advisory Committee (a group of Council staff, Councillors and community representatives); youth representatives; *Community Voice* members; representatives from local arts organisations; disability service providers; community houses; Victoria Police; and local sporting clubs.

The co-design process identified: the scope of engagement; the different engagement stages; themes to guide discussion; types of engagement activities (to reach those groups that rarely take part in engagement processes); data required to inform the process; and what success might look like from different stakeholder and community perspectives.

The co-design process also produced the remit for the project, (ie. the key question being asked): "What is our vision for the future of Glen Eira and how can we reflect the aspirations of our diverse and growing community?"



## Wider community engagement

September 2019–March 2020

The wider engagement process was conducted in two stages:

Stage one: Ideas generation phase: September–December 2019

Stage two: Testing findings and digging deeper: January–March 2020



## Stage one: Ideas generation phase: September–December 2019

From September to December 2019 several engagement activities were conducted at many locations throughout Glen Eira and online, including:

- A launch of the *Community Vision*.
- A survey with our *Community Voice* members.
- Eight pop-up engagement activities at various community events and places in Glen Eira.
- Online engagement on *Have Your Say*.
- A hard copy feedback form sent to every household.
- A youth survey.
- Hundreds of sheets for children to draw their future vision.

During this stage of engagement, three guiding questions were posed to stimulate thinking from the community.

In the future I hope Glen Eira will?

One thing I love about Glen Eira is?

What change is needed to make this happen?

More than 3,000 people contributed their ideas and aspirations for the future of Glen Eira. The results of the engagement data were collated and analysed by independent consultants Activate Consulting and Cochrane Research Solutions into a preliminary report identifying 12 key action areas for consideration in developing the *Glen Eira 2040 Community Vision*.

These 12 action areas were:



Green, sustainable and environmentally conscious



Well-designed, with a mix of quality housing and local neighbourhood character



A place for active, leisure and sporting activities



Connected and easy to move around using any mode of transport



Diverse, inclusive and healthy



Thriving, with vibrant shopping strips and businesses



Safe, clean and tidy



A place to connect, create and learn



Supportive of residents in need



Informed and involved



Effectively and efficiently supported by Council's organisation



Home to arts and culture that celebrate our identity and heritage



## Stage two: Testing findings and digging deeper: January–March 2020

The second stage of the wider engagement process sought to gain a deeper understanding of how the community felt about these 12 action areas, to gain more specific information and to see if anything was missing. This stage of engagement was conducted through:

- a series of four pop ups;
- five community workshops;
- several kitchen table conversations and face-to-face meetings and;
- an online and hard copy survey.

Participants were presented with the 12 action areas and asked the following questions:

Please tell us your top three to five most important action areas for the Glen Eira community (in no order) and why.

Are there any action areas missing from the list?

If you had two minutes with the Panel members, what important advice would you give them to consider when developing the *Glen Eira 2040 Community Vision*?

This stage of engagement received feedback from more than 850 people. This information provided more detailed engagement data and insights for the Deliberative Citizens' Panel in creating the *Community Vision*.

The detailed results of both stage one and stage two community engagement were analysed in the *Glen Eira 2040 Community Vision Community Engagement Report* completed by consultant group Activate Consulting and Cochrane Research Solutions; and provided in an information pack to the Deliberative Citizens' Panel.



Community Vision pop up engagement, December 2019





## **Recruitment of Deliberative Citizens' Panel** **January–March 2020**

The recruitment for the panel was conducted by an independent consultant 'Deliberately Engaging' to ensure the selection of panelists was made independently of Council. In the week beginning 20 January 2020, an Expression of Interest invitation for the panel was randomly distributed to 21,000 households across Glen Eira through a letterbox drop where every third household received an invitation. Everyone aged 18 years or over living in the Glen Eira municipality was invited to register interest, except for:

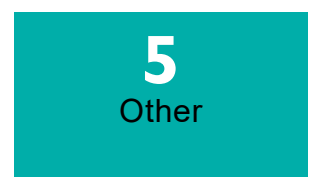
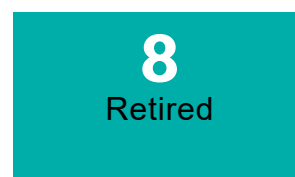
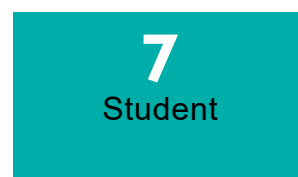
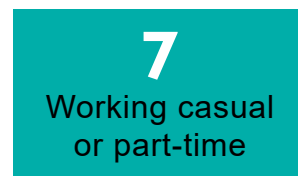
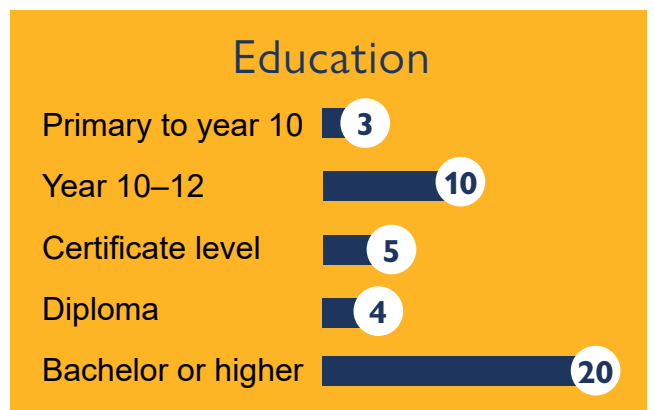
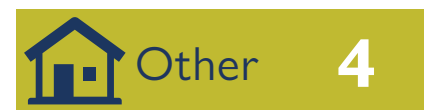
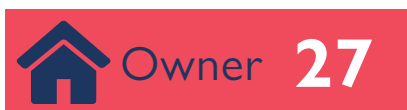
- past and present elected representatives;
- people in paid political employment; and
- current Council staff.

The invitation provided the background to the project, the panel dates, the remuneration for attendance and how to register. More than 350 expressions of interest were registered.

For those that registered to be on the Panel, a range of demographic data (eg. age, gender, suburb, education, employment, house tenure) were applied to stratify the sample and other diversity characteristics such as LGBTIQ+, people with a disability and culturally and linguistically diverse people were also applied to support further community representation. This resulted in the recruitment of a 42 member panel broadly representative of the demographic profile of the Glen Eira community..

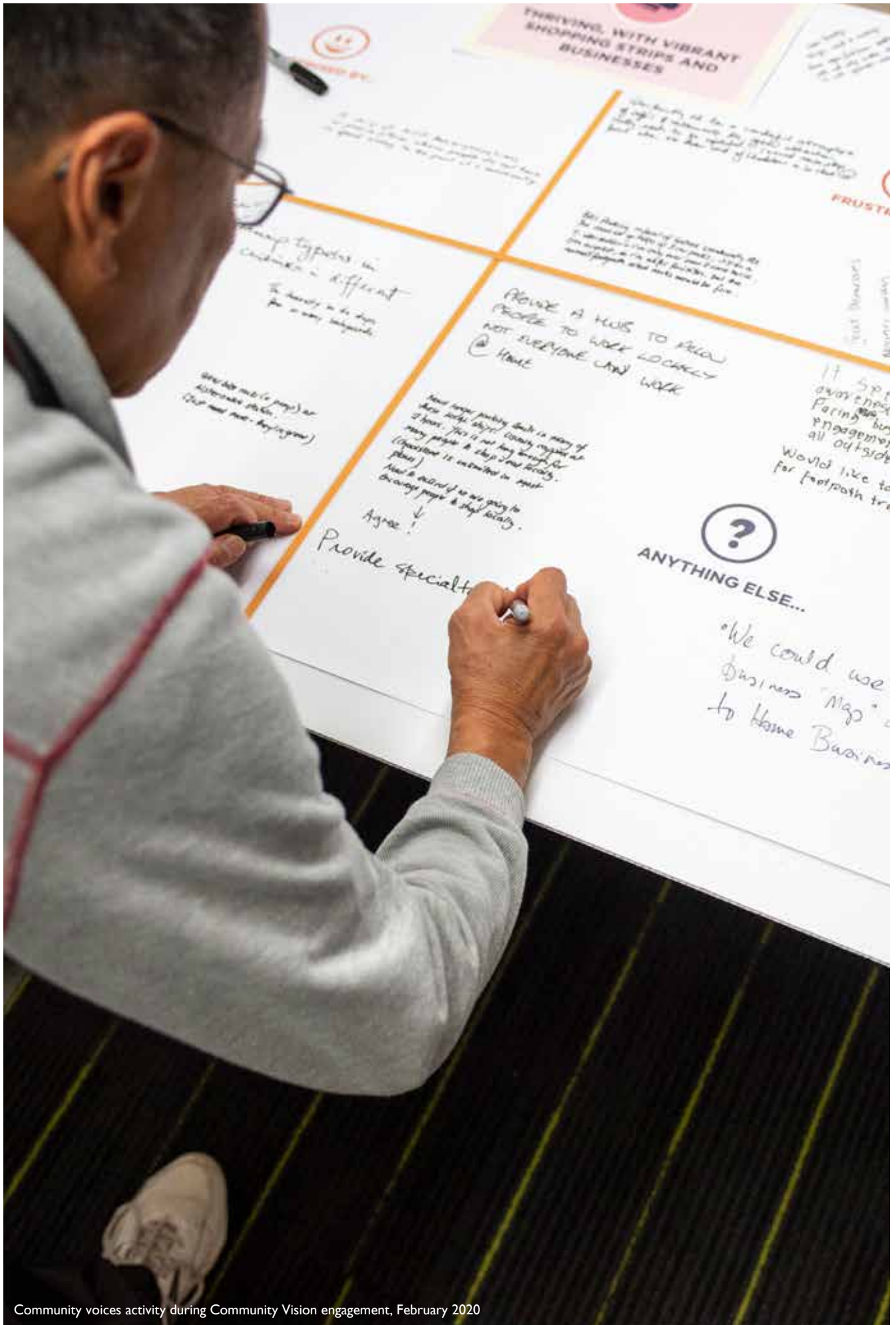
Details of the panel members were provided to Glen Eira City Council on Wednesday 11 March 2020; the day of the first Panel meeting. This ensured that Council could not influence the final group selected beyond the requested demographic representation.

## Profile of Deliberative Citizens Panel (42 participants)



\*Infographic provided by Deliberately Engaging, March 2020.





Community voices activity during Community Vision engagement, February 2020



## **Face-to-face Deliberative Citizens' Panel sessions 11 and 15 March 2020**

### **Face-to-face Panel session one — meet and greet, 11 March 2020**

On Wednesday 11 March 2020 the first Panel session took place as a meet and greet. Of the 42 panel members recruited 37 attended this session. (The five people unable to attend were automatically excluded from the Panel as full attendance was a key requirement).

The session included a formal welcome from Glen Eira Mayor Cr Margaret Esakoff and CEO Rebecca McKenzie. It also explained how the Panel would operate and make decisions, established agreements on working together; explained the importance of critical thinking, clarified the scope and opened the panel's online communication portal. Panel members were provided with relevant background information to support them in their role. This information was provided in the form of an information pack that included that included: a *Panel Handbook* and the *Glen Eira 2040 Community Engagement Report*.

### **Face-to-face Panel session two — full day deliberation, 15 March 2020**

On Sunday 15 March the Panel met for their second face-to-face session for a full day's deliberation. This session provided the Panel with an opportunity to hear from a range of presenters and subject matter experts to capture insights on key action areas. Some of the speakers included: Anna Kaplan, Producer — *Documentary 2040*; Dr Robyn Cochrane, who spoke about her analyses of the *Community Engagement Data Report*; Helen Millicer, Consultant, Sustainability and environment; Knowles Tivendale, Consultant, Transport and movement; and Julia Bell Consultant, Planning and housing development; as well as a range of Council officers with knowledge expertise. The panel also commenced the process of drafting a Vision statement and seeking further information from council to support their deliberations.

This was the last face-to-face session held with the Panel. The work of the Panel was temporarily paused as we entered statewide restrictions as a result of the COVID-19 pandemic.





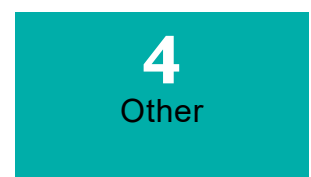
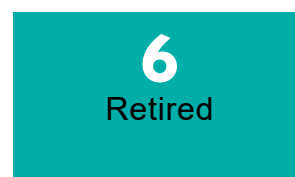
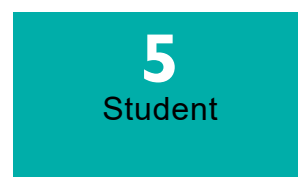
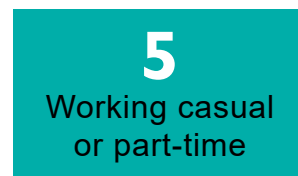
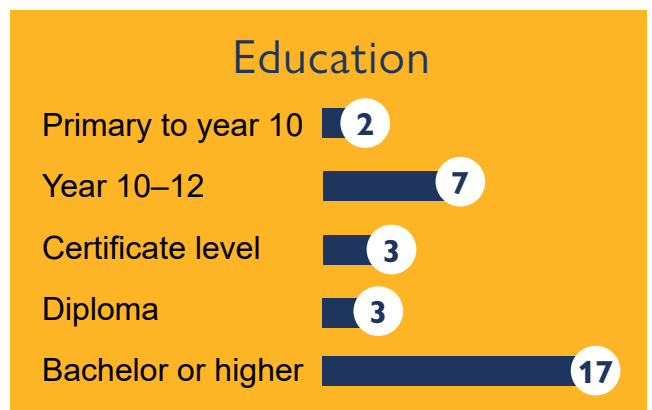
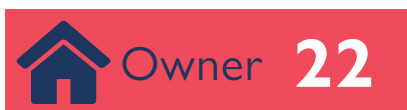
### **Restarting the Deliberative Citizens' Panel Online August 2020**

It took five months before the Panel could resume their work on developing the *Glen Eira 2040 Community Vision*. As it became more apparent that the ongoing impact of the COVID-19 pandemic would prevent face-to-face sessions indefinitely, Council made the decision to resume the work to develop the *Glen Eira 2040 Community Vision* online.

In making this decision, Council considered options and spoke with the 37 eligible Panel members to understand their availability and interest in continuing their participation to finish the *Community Vision* online. Out of 37 panel members, 32 agreed to continue on. Of the Panel members who withdrew; three identified not having the capacity and two had since moved out of the City of Glen Eira.

The final online panel of 32 (infographic opposite) still provided a good representative sample of the demographics of Glen Eira, except for an over-representation of females compared to males. Due to the unique factors influencing this process and the usual rates of panel member attrition, it was deemed to be a sufficiently robust panel size to continue.

## Profile of Deliberative Citizens' Panel (32 participants)



\*Infographic provided by Deliberately Engaging, August 2020.



## Online Panel sessions

The online Panel sessions were structured and facilitated by MosaicLab and were planned to allow appropriate time for deliberations and enough instruction to support the Panel in their task to develop a *Community Vision* by responding to the remit:

“What is our vision for the future of Glen Eira and how can we reflect the aspirations of our diverse and growing community?”

There were four online deliberations sessions held during August 2020 using the Zoom platform.

- Online session one, Tuesday 11 August 2020, 6pm to 8pm: in this session Panel members reconnected, revisited their role and task, reconfirmed working norms and got tech-ready to work online.
- Online session two, Sunday 16 August 2020, 9am to 1pm: in this session Panel members reviewed and fine-tuned the draft *Community Vision* statement they had originally developed in March 2020.
- Online session three, Sunday 23 August 2020, 9am to 1pm: in this session Panel members confirmed the draft *Community Vision* statement and began to develop the draft principles underpinning the draft vision statement.
- Online session four, Sunday 30 August 2020, 9 to 4pm: in this session Panel members reviewed and finalised the draft *Community Vision* and principles and handed over the Panel's report to Council.

## Panel participation numbers

The panel resumed online with 32 members for the first session; 29 on the second; 30 for the third; and 31 for the final session which is where the voting process determined the draft *Vision* statement and principles. Panel members who missed one session were able to be briefed to continue their role, except for the last session.

## The draft *Glen Eira 2040 Community Vision*

The Deliberative Citizens' Panel formally handed the draft *Glen Eira 2040 Community Vision* to the Mayor, Cr. Margaret Esakoff and to Councilors Jamie Hyams and Tony Athanasopoulos at the end of their panel session on Sunday 30 August 2020.

The draft *Glen Eira 2040 Community Vision* was then presented by four nominated panel representatives to the newly elected Council at an Assembly of Councilors Meeting in December 2020.

Following this presentation, Council endorsed the draft *Glen Eira 2040 Community Vision* to be exhibited to the Glen Eira community in early 2021 for a final period of community engagement.

## **Community engagement on the draft *Glen Eira 2040 Community Vision***

The draft *Glen Eira Community Vision* was open for community feedback for six weeks from Monday 18 January to Sunday 28 February 2021.

The engagement was promoted through a variety of media channels including the *Glen Eira News*, a video, a media release, social media, Council's website, Council newsletters, Council's *Have Your Say* engagement portal and correspondence was sent widely to key stakeholders and community distribution lists.

The engagement methods and activities to seek community feedback were: an online survey; a hardcopy survey available at Town hall, Libraries and other community settings; a community groups' and organisations' feedback session held on Thursday 4 February 2021 and two online workshops held on Wednesday 10 February and Wednesday 17 February 2021.

In total there were 90 contributors who provided feedback on the draft *Glen Eira 2040 Community Vision*. The feedback was collated and provided to the *Community Vision* Deliberative Panel who met once more for a final panel session on Sunday 21 March 2021.



### **Final step for Panel — finalising the *Glen Eira 2040 Community Vision* 21 March 2021**

The Deliberative Citizens' Panel met for one final day of deliberation to review and respond to the community's comments and feedback; and to finalise the *Community Vision* report.

This final *Glen Eira 2040 Community Vision* was formally handed to the Mayor, Cr. Margaret Esakoff at the end of the panel session on 21 March 2021.

## **Endorsement of the *Glen Eira 2040 Community Vision***

The *Glen Eira 2040 Community Vision* was submitted to Council for endorsement on Wednesday 19 May 2021.

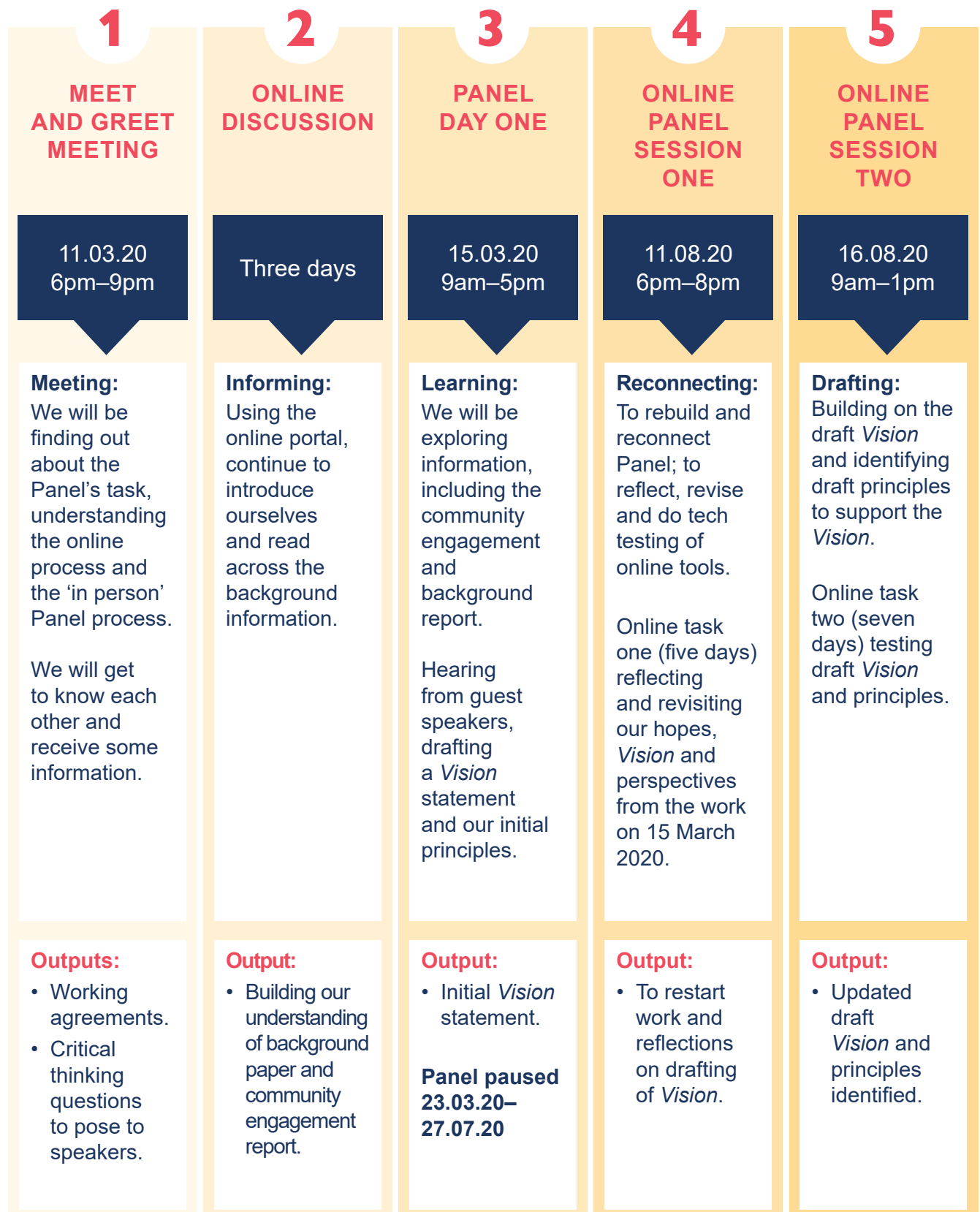
The *Glen Eira 2040 Community Vision* will be used to inform all of Council's future strategic planning. This includes Council's next *Council Plan 2021–25* (and subsequent plans), the 10 year *Strategic Resource Plan* and Council's annual budgets.

All new Council plans will be guided by our *Community Vision* and will be required to show how they align with the aspirations and values of the community. It is through this hierarchy of plans that the work completed in this *Community Vision* will be turned into measurable actions shaping the future of Our Glen Eira.

This *Community Vision* has been written by the community, for the community and will enable Council to commit to delivering services and programs for our future Glen Eira.



# Glen Eira 2040 Panel Roadmap



6

**ONLINE PANEL SESSION THREE**

23.08.20  
9am–1pm

**Review:**

Review draft *Vision* content and materials.

Online task three (seven days)  
Review and reflect on all work to date and prepare for final session.

**Output:**

- Draft *Vision* report for initial Council feedback.

7

**ONLINE PANEL SESSION FOUR**

30.08.20  
9am–4pm

**Refine:**

Undertake final review and refine *Vision* and principles.

Panel to handover draft *Vision* report to Council.

**Output:**

- Draft *Vision* report.

8

**PUBLIC EXHIBITION**

February 2021

**Checking:**

Panel representatives to present the draft *Vision* report at an Assembly of Council.

A period of public exhibition to occur — for input and feedback from the community.

**Output:**

- Broad community feedback on draft *Vision*.

9

**FINALISING AND ENDORSEMENT OF COMMUNITY VISION**

May 2021

**Finalising:**

Final Panel session: 21 March 2021

The Panel to finalise the *Vision* and principles to present final report to Council.

Panel representatives attend Council Meeting to participate in the process of the *Glen Eira 2040 Community Vision* being endorsed by Council.

**Output:**

- *Glen Eira 2040 Community Vision* endorsed.



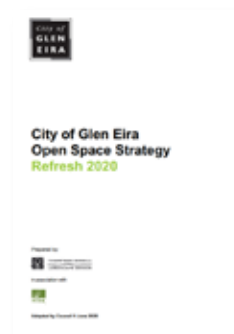
# Background information

The Panel considered a wide variety of information inputs from a variety of different sources during their deliberations. In summary this included:

The *Glen Eira 2040 Community Vision Community Engagement Report* which included a collation and analysis of the wider engagement data from 3,890 participants written by independent consultants Activate Consulting and Cochrane Research Solutions.



A wide range of relevant strategic plans, data sets and reports were provided to the Panel both in hardcopy during face-to-face sessions and through the online Panel portal. Examples include the *Glen Eira Council and Community Plan 2017–2021*; *Environmental Sustainability Strategy 2016–2021*; the *Glen Eira Community Safety Plan 2018–2022* to name a few.



The Panel was also provided with a background report from Council that outlined some of the key challenges facing Glen Eira now and forecast into the future. A snapshot of the challenges is identified below:

### **The needs of our growing community**

Understanding the impact of predicted population growth on:

- maintaining strong community connections, belonging and safety;
- responding to our community's diverse health and wellbeing needs;
- providing services to people at all stages of life;
- catering for an ageing population; and
- ensuring inclusion of people of all abilities, social identities, cultures and faith backgrounds as well as caring for those most vulnerable.

### **The protection of our environment and open space**

Understanding the impact of critical environmental issues such as:

- tackling climate change, reducing our carbon emissions and moving to renewable energy;
- protecting the environment by increasing recycling and reducing water use and waste;
- enhancing biodiversity and maintaining a green and treed City; and
- expanding our municipal open space and balancing the community's need for sport, recreation and leisure.

### **The needs of our urban development, economy and movement**

Understanding the impact of increased population growth, changing density, movement and economy on:

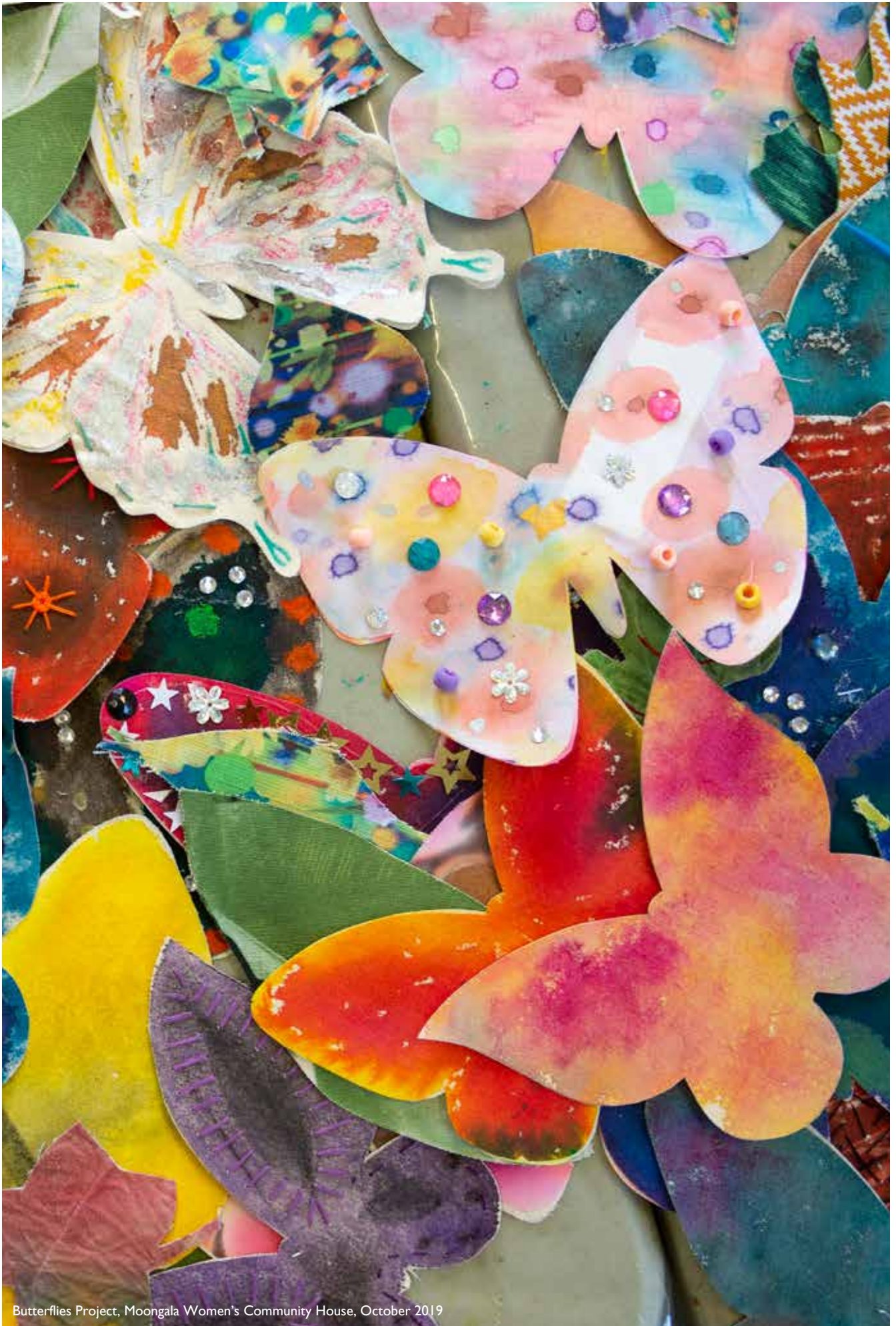
- managing new growth in housing while retaining neighbourhood character and amenity of the area;
- managing the quality, design and environmental sustainability features of new developments and disruptions they may cause to the local area;
- planning for accessible and diverse housing options to meet different community needs and stages of household life cycles whilst also providing social and affordable housing;
- planning and developing vibrant activity centres to live, work, play and shop;
- building local job growth and expanding more localised opportunities for employment; and
- improving traffic management and congestion to make it easier to move around the City by expanding sustainable travel choices like: walking; cycling; and public transport.

### **The needs of our infrastructure and community assets**

Understanding the impact of maintaining and sustainably improving our infrastructure and assets to meet growth, community need, budget limitations and required standards such as:

- renewing our ageing infrastructure to ensure they are safe and can service our community now and into the future;
- making buildings, energy efficient, sustainable and accessible for all ages and abilities;
- maintaining and improving essential services such as local roads and footpaths; and
- changing approaches to building new infrastructure and facilities to meet community demand; alternative funding models and partnerships with other levels of government, developers, businesses and regional partners.





Butterflies Project, Moongala Women's Community House, October 2019



# Profile of Glen Eira

## People and place now and in the future

The Panel was provided with a demographic and community profile of Glen Eira and some projections and forecasts of changes expected in the future. A snapshot of this profile is outlined below.



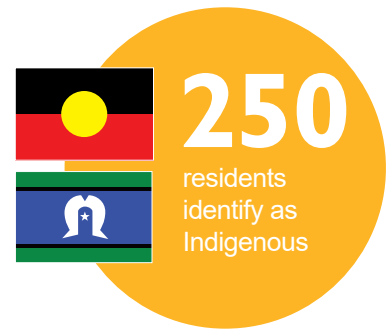
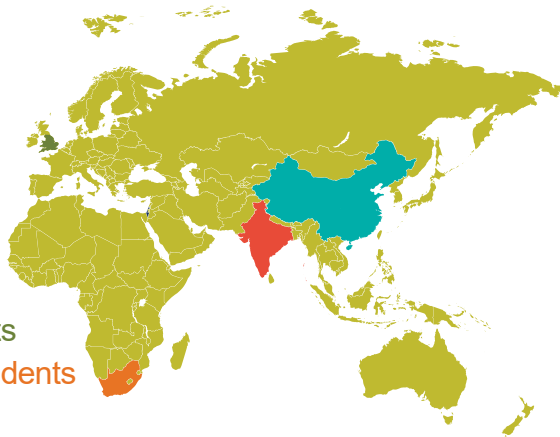
## Who we are

The residents of Glen Eira are diverse and span a wide range of cultures, household types and ages. There are 52,296 occupied households in the City, the most common type being couples with children.

## We are a diverse city

The most common country of birth outside Australia

- China — 7,151 residents
- India — 6,258 residents
- England — 3,886 residents
- South Africa — 3,214 residents
- Israel — 2,161 residents



# 16.8%

of the Glen Eira population identify as Jewish, which is the largest Jewish population in Australia.



4.4 per cent of residents require assistance with their day-to-day lives due to disability.

# 31.5%

speak a language other than English.  
5.5% speak Mandarin

# 37

 is the median age in Glen Eira

## We are a growing city

Population Forecast



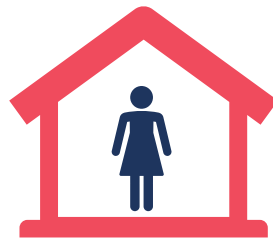
[1] Australian Bureau of Statistics  
[2] <http://profile.id.com.au/glen-eira>



**34.7%**  
Couple with children



**8.4%**  
Single parent families



**26.2%**  
Single person households



**5.6%**  
Group households



House **50.6%**



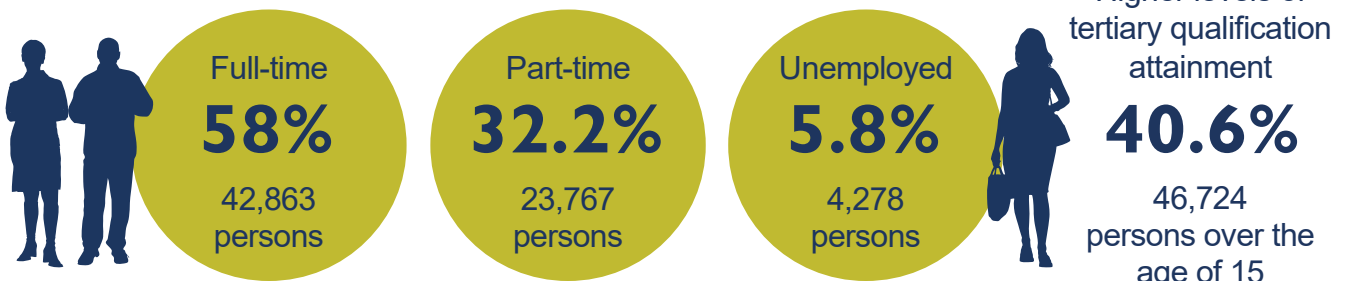
Townhouse **24.2%**



Apartment **24.5%**

### Glen Eira is a prosperous city

Employment status — persons over 15



Professional, scientific and technical services  
**13.5%**



Health care and social assistance  
**12.5%**



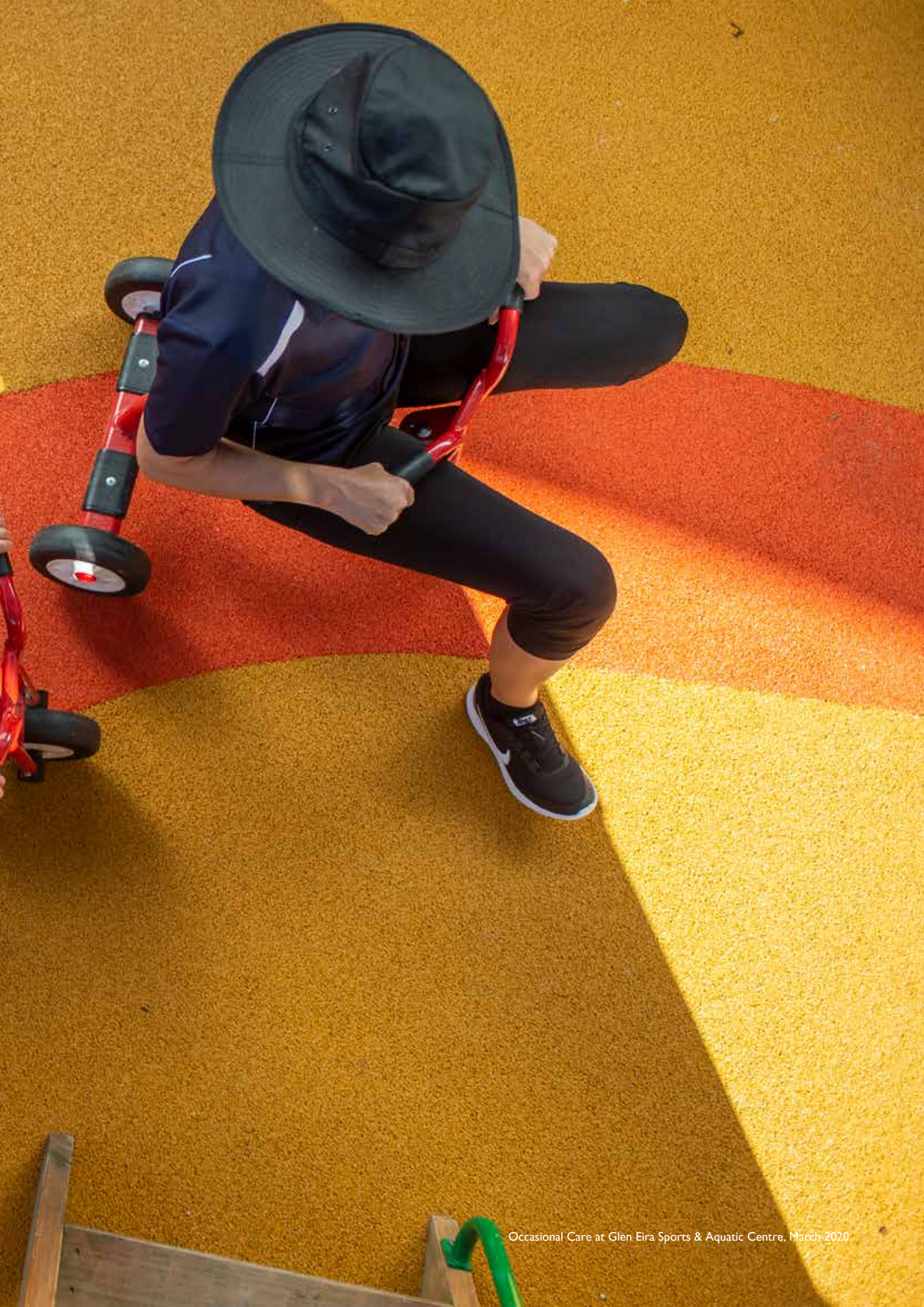
Education and training  
**10.8%**

The most common occupations are professionals (34.6%), managers (16.5%) and clerical and administration workers (13.5%).













GLEN EIRA  
CITY COUNCIL

## Glen Eira City Council

Corner Glen Eira and Hawthorn Roads, Caulfield

Mail address: PO Box 42

Caulfield South, 3162

Phone: (03) 9524 3333

Fax: (03) 9523 0339

mail@gleneira.vic.gov.au

www.gleneira.vic.gov.au

### National Relay Service

If you are deaf, hearing-impaired, or speech-impaired, we ask that you call us via the National Relay Service and then ask for (03) 9524 3333.

Online: <https://internet-relay.nrscall.gov.au>

Teletypewriter (TTY): 13 36 77

Speak and Listen: 1300 555 727

### Social media

#### Glen Eira City Council:

[www.facebook.com/GlenEiraCityCouncil](http://www.facebook.com/GlenEiraCityCouncil)

#### @cityofgleneira:

[www.instagram.com/cityofgleneira](http://www.instagram.com/cityofgleneira)

#### Glen Eira arts, gallery and events:

[www.facebook.com/gleneiraarts](http://www.facebook.com/gleneiraarts)

#### Glen Eira Leisure:

[www.facebook.com/GESAConline](http://www.facebook.com/GESAConline)

<https://www.instagram.com/gleneiraleisure>

[www.twitter.com/GESAConline](http://www.twitter.com/GESAConline)

#### Glen Eira Libraries and Learning Centres:

[www.facebook.com/GlenEiraLibraries](http://www.facebook.com/GlenEiraLibraries)

<https://www.instagram.com/gleneiralibraries>

#### Glen Eira Youth Services:

[www.facebook.com/GlenEiraYouthServices](http://www.facebook.com/GlenEiraYouthServices)

[www.instagram.com/gleneirayouthservices](http://www.instagram.com/gleneirayouthservices)

#### Glen Eira sustainable living:

[www.facebook.com/sustainablelivinggleneira](http://www.facebook.com/sustainablelivinggleneira)